

Prices Dashboard

Data up to April 2025

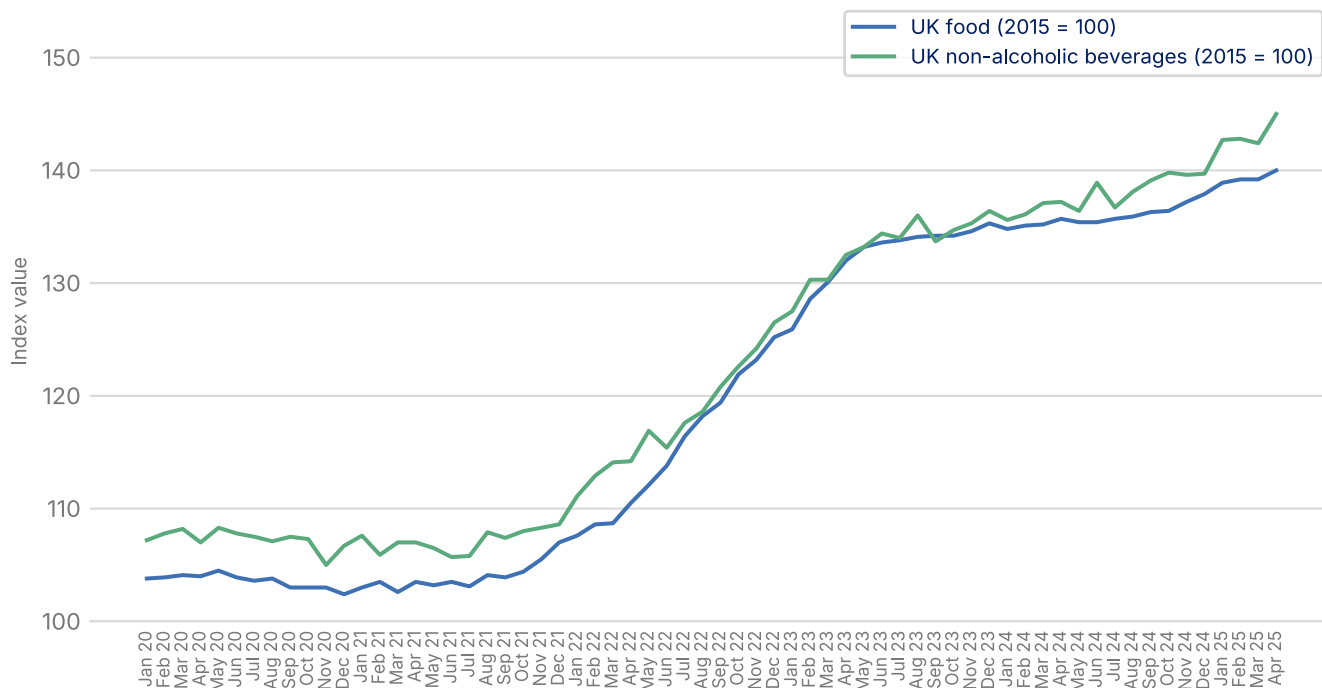


Category		Value	Monthly change, %	Yearly change, %
UK food and non-alcoholic drink inflation (CPIH)				
UK food	Index	140.0	▲ 0.6%	▲ 3.2%
UK non-alcoholic drink	Index	145.0	▲ 1.8%	▲ 5.7%
UK producer prices (PPI) – Dataset has been paused by the ONS				
Input prices: domestic food	Index	n/a	n/a	n/a
Input prices: imported food	Index	n/a	n/a	n/a
Output prices: food for domestic market	Index	n/a	n/a	n/a
Energy prices and transportation				
Crude oil, brent (\$/bbl)	Price	67.75	▼ - 6.7%	▼ - 24.8%
Natural gas (\$/mmbtu)	Price	11.59	▼ - 12.4%	▲ 27.6%
UK natural gas (£/thm)	Price	77.28	▼ - 20.7%	▲ 7.5%
Shipping container rates	Index	2,045.9	▼ - 6.9%	▼ - 15.6%
UK haulage	Index	123.8	▲ 3.3%	▲ 4.2%
Fertiliser	Index	162.2	▲ 4.0%	▲ 3.5%
Packaging				
Paper and paperboard	Index	n/a	n/a	n/a
Wooden containers	Index	n/a	n/a	n/a
Aluminium (\$/mt)	Price	2,371.60	▼ - 10.8%	▼ - 5.4%
Agricultural raw materials				
Sunflower oil (\$/mt)	Price	1,223.33	▼ - 0.7%	▲ 26.0%
Rapeseed oil (\$/mt)	Price	1,256.48	▲ 5.3%	▲ 18.7%
Palm oil (\$/mt)	Price	994.37	▼ - 6.9%	▲ 6.3%
Wheat, US HRW (\$/mt)	Price	249.58	▼ - 2.3%	▼ - 8.3%
Maize (\$/mt)	Price	215.00	▲ 3.7%	▲ 12.2%
Rice (\$/mt)	Price	415.00	▼ - 2.4%	▼ - 29.9%
Soybeans (\$/mt)	Price	406.66	▲ 1.4%	▼ - 14.8%
Feed wheat (UK)	Index	112.6	▼ - 0.3%	▲ 11.3%
Sugar (\$/kg)	Price	0.40	▼ - 3.7%	▼ - 11.1%
Cheese (£/tonne)	Price	4,020	— 0.0%	▲ 15.9%
Butter (£/tonne)	Price	6,050	▼ - 0.3%	▲ 23.2%
Skimmed milk powder (£/tonne)	Price	1,980	▼ - 1.5%	▼ - 1.0%
Cocoa (\$/tonne)	Price	8,169.16	▲ 1.1%	▼ - 17.3%
Beef (UK)	Index	184.3	▲ 8.3%	▲ 29.6%
Chicken (UK)	Index	102.6	▲ 2.2%	▼ - 15.9%
Pork (UK)	Index	126.4	▼ - 0.5%	▼ - 3.8%
Potatoes (UK)	Index	172.1	— 0.0%	▼ - 29.8%
Fish (UK)	Index	n/a	n/a	n/a

UK food and non-alcoholic drink inflation (CPIH)

[Back to Title Page](#)

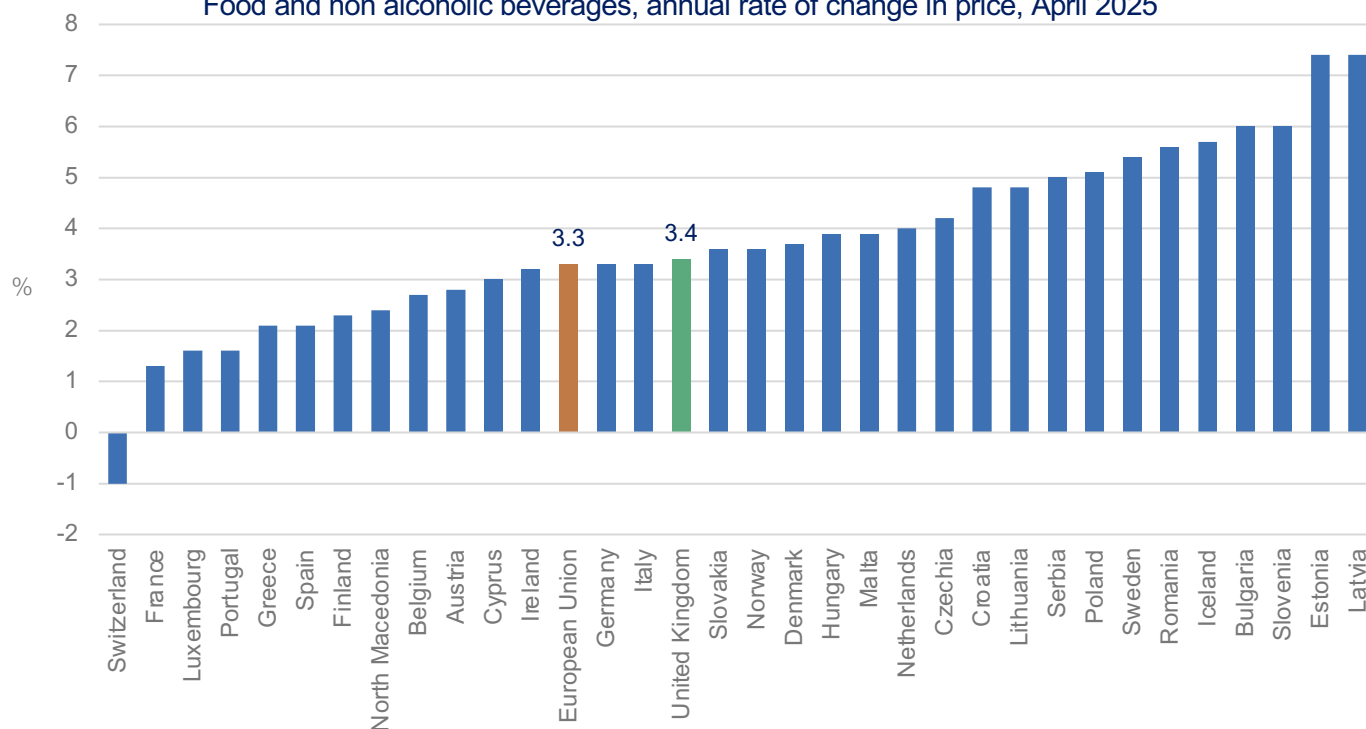
UK food and UK non-alcoholic beverages



Source: Office for National Statistics

Food and drink inflation comparison with Europe

Food and non alcoholic beverages, annual rate of change in price, April 2025

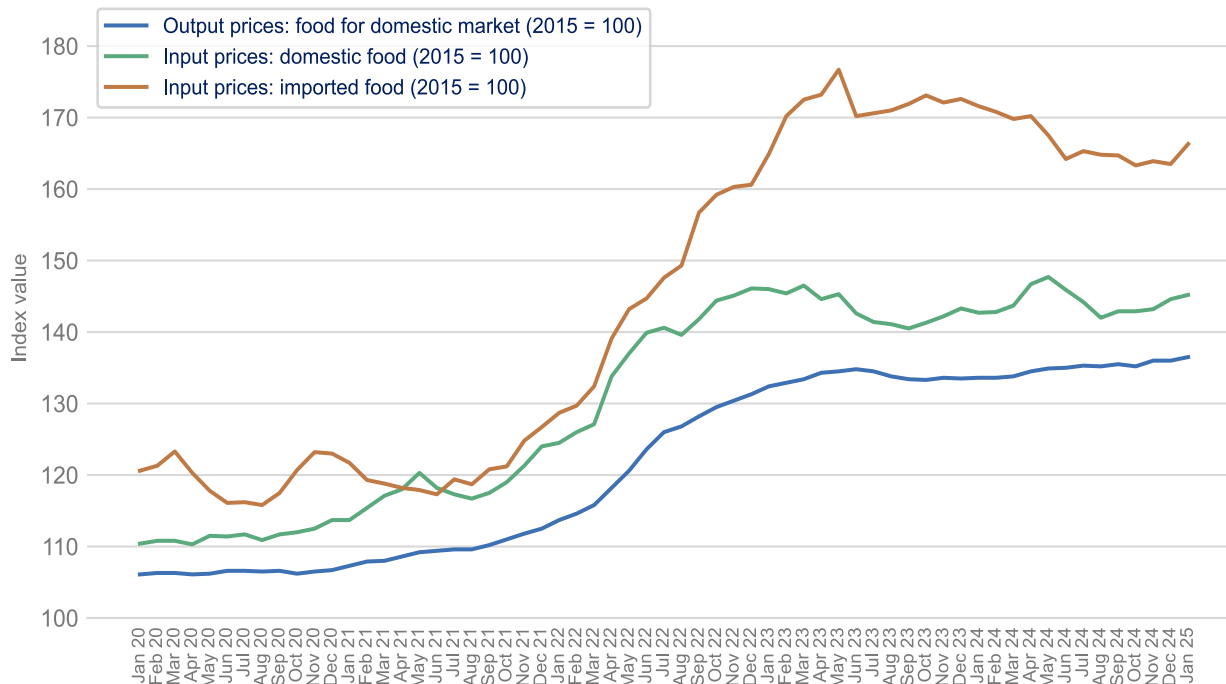


Source: Eurostat

UK producer prices (PPI)

[Back to Title Page](#)

Input prices (domestic food), input prices (imported food), output prices (food for domestic market)

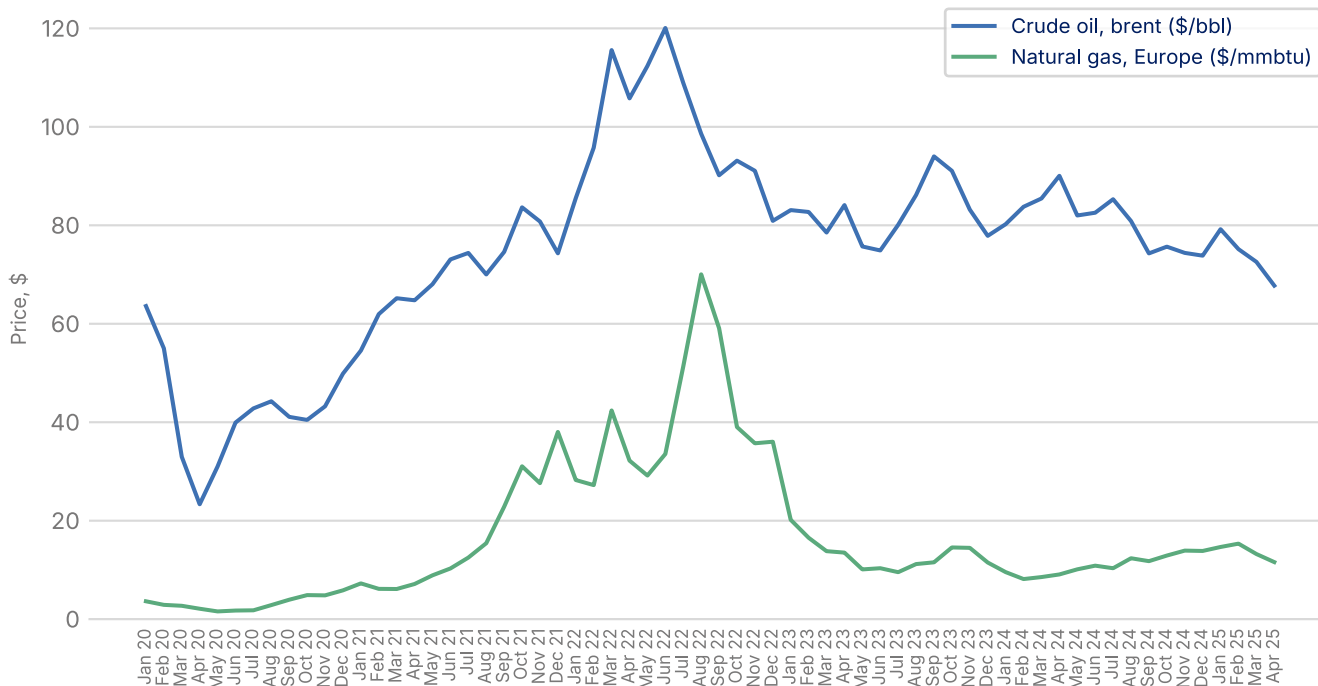


Note: The release of PPI data is currently being paused by the Office for National Statistics

Source: Office for National Statistics

Energy prices and transportation

Crude oil and natural gas



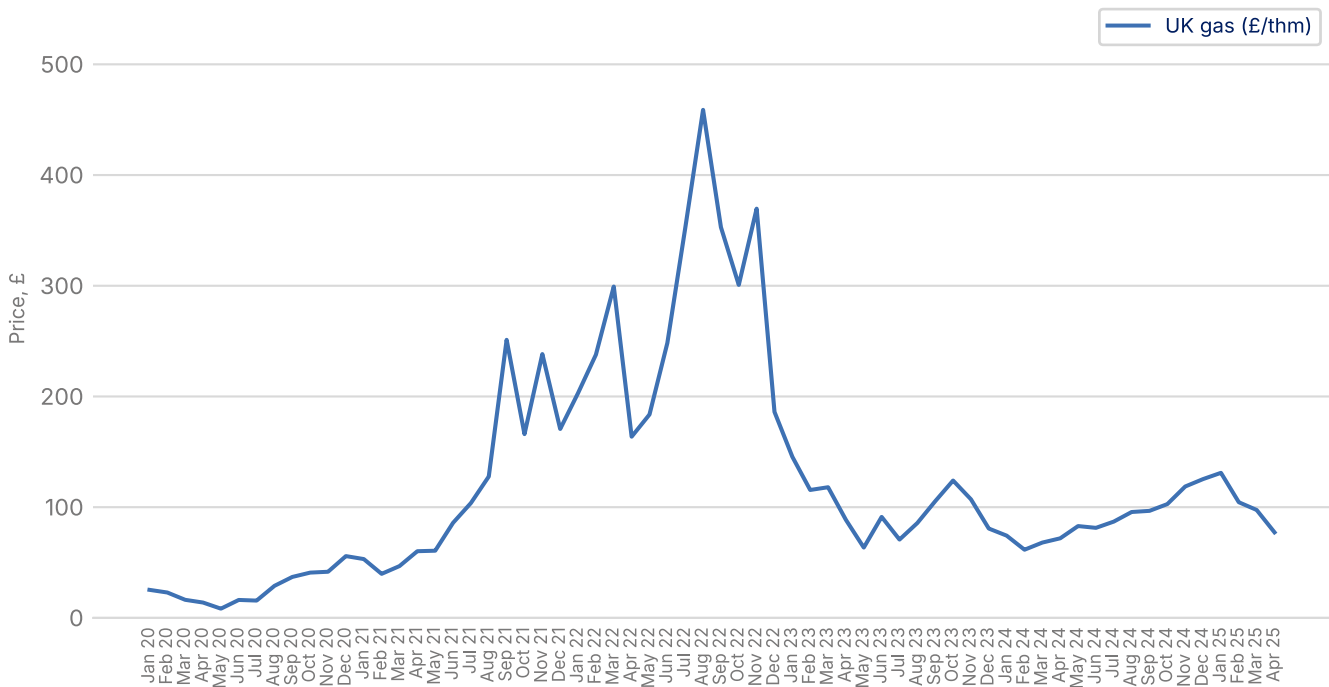
Source: World Bank Commodity Price Data

Prices Dashboard

Data up to April 2025

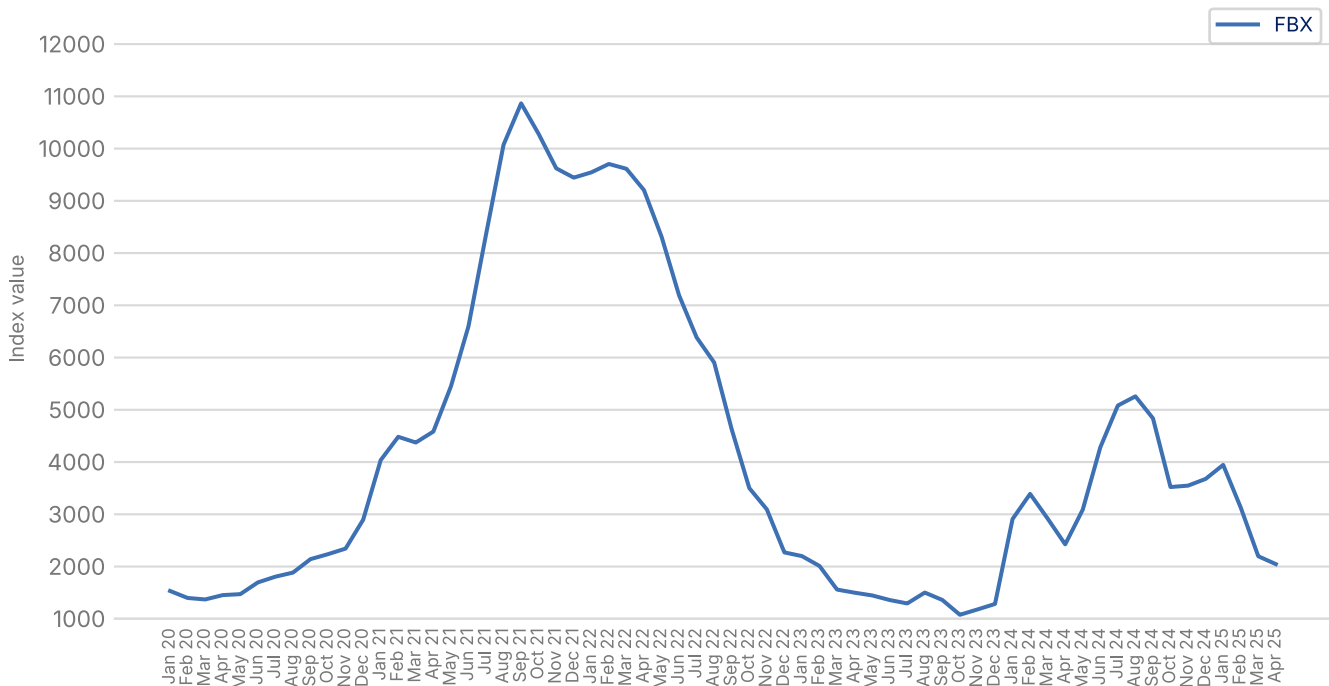
[Back to Title Page](#)

UK natural gas



Source: Trading Economics

Freightos Baltic Index (FBX): Global Container Freight Index



Source: Freightos, Global Container Index

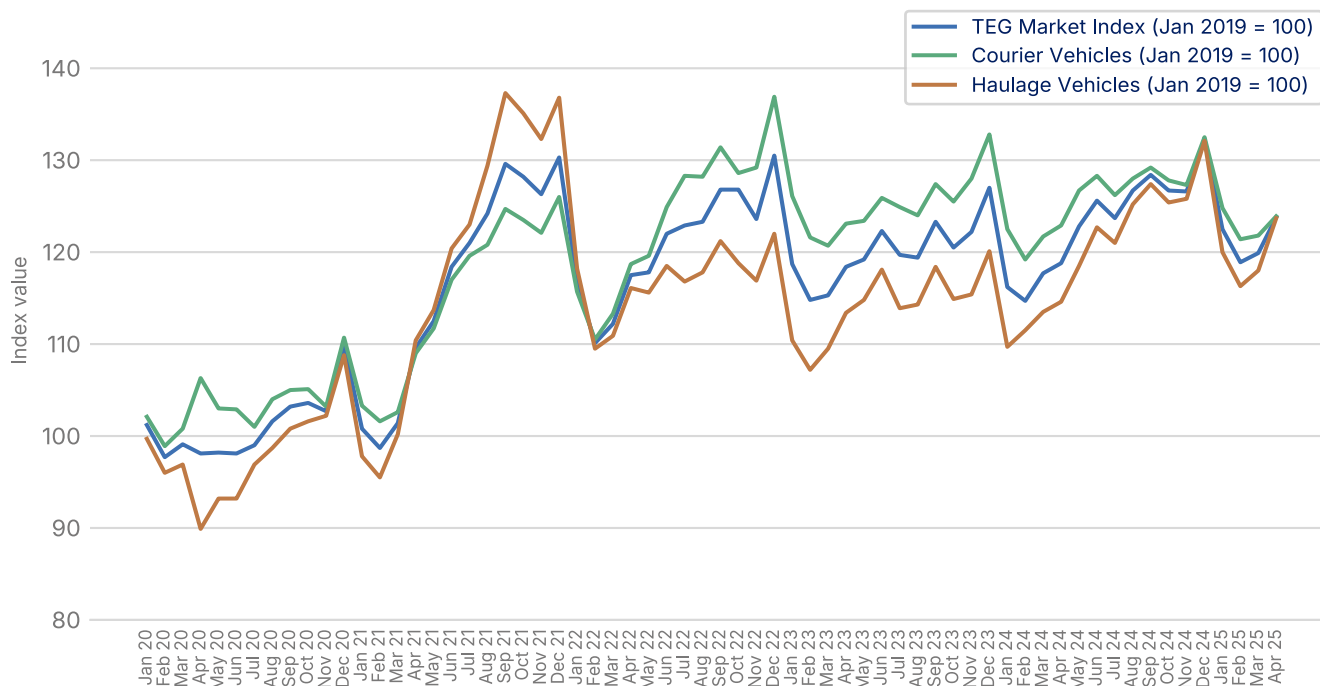
Note: Each monthly index value is an average of the weekly index values of that month

Prices Dashboard

Data up to April 2025

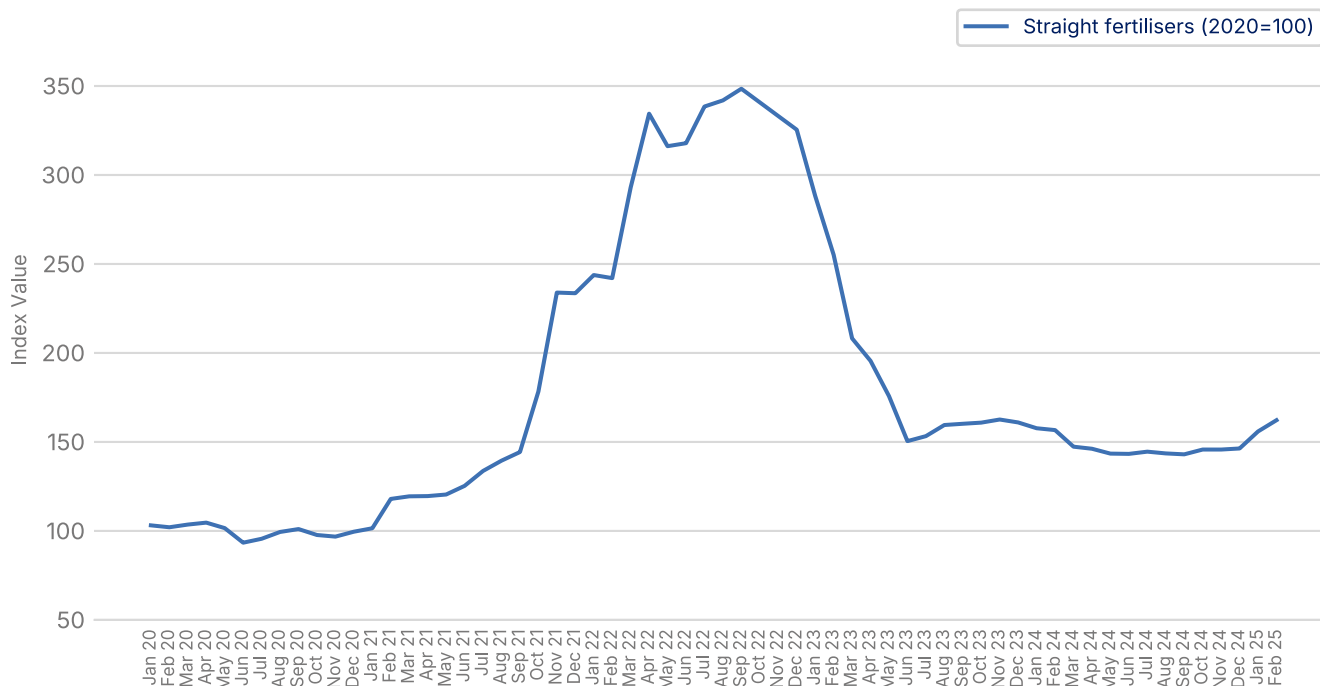
[Back to Title Page](#)

UK Haulage



Source: Transport Exchange Group

Straight fertilisers



Source: Department for Environment, Food & Rural Affairs

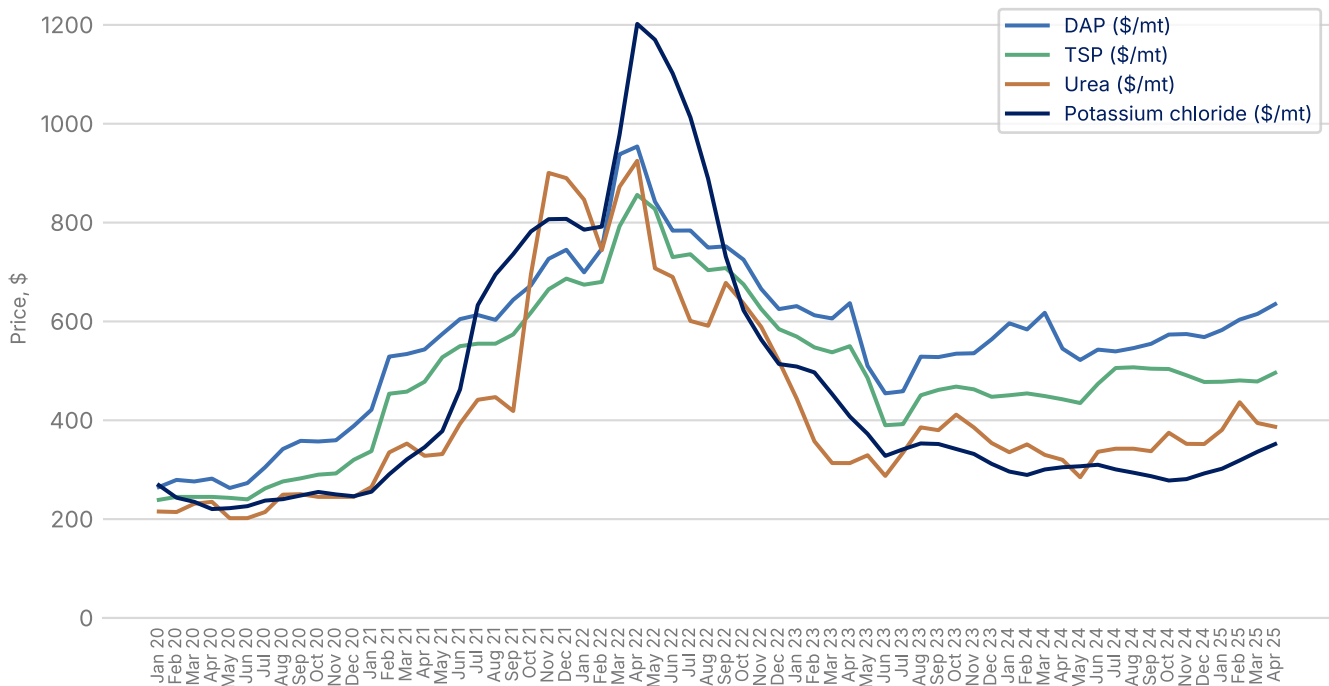
Note: This data is only available to February 2025.

Prices Dashboard

Data up to April 2025

[Back to Title Page](#)

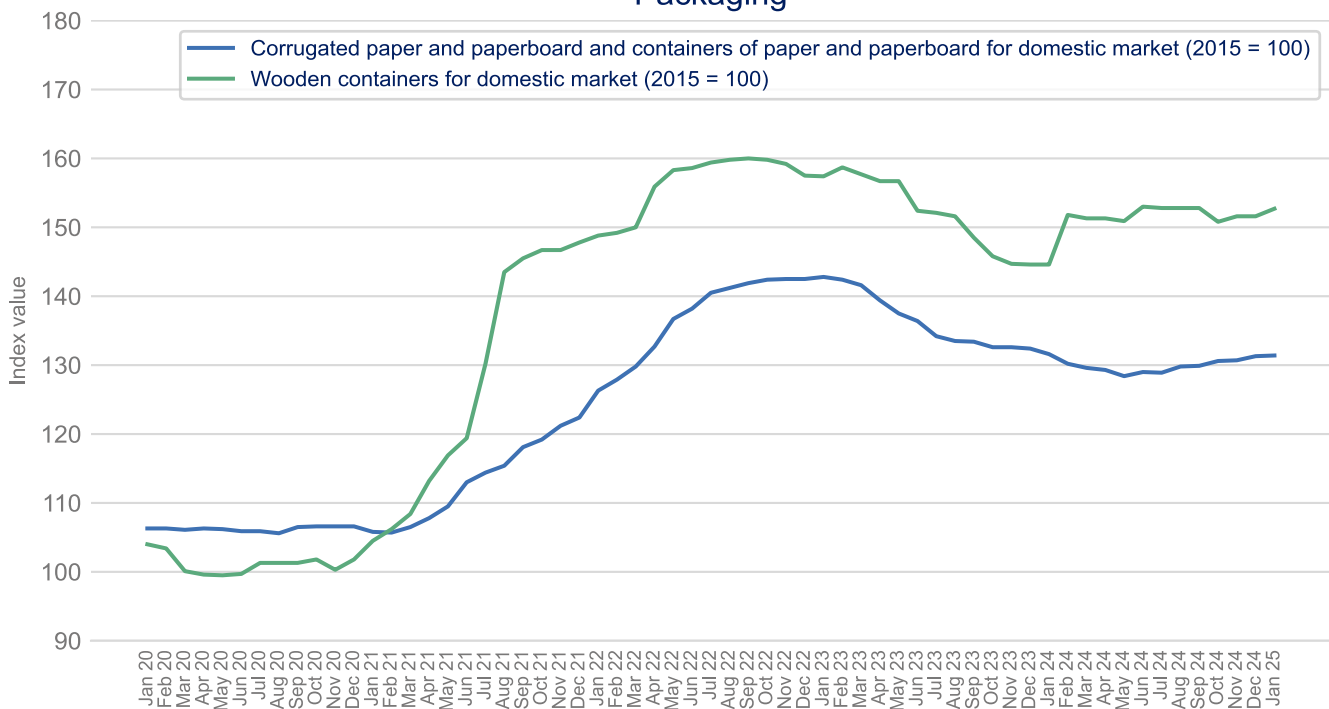
DAP, TSP, Urea and Potassium Chloride



Source: World Bank Commodity Price Data

Packaging

Packaging



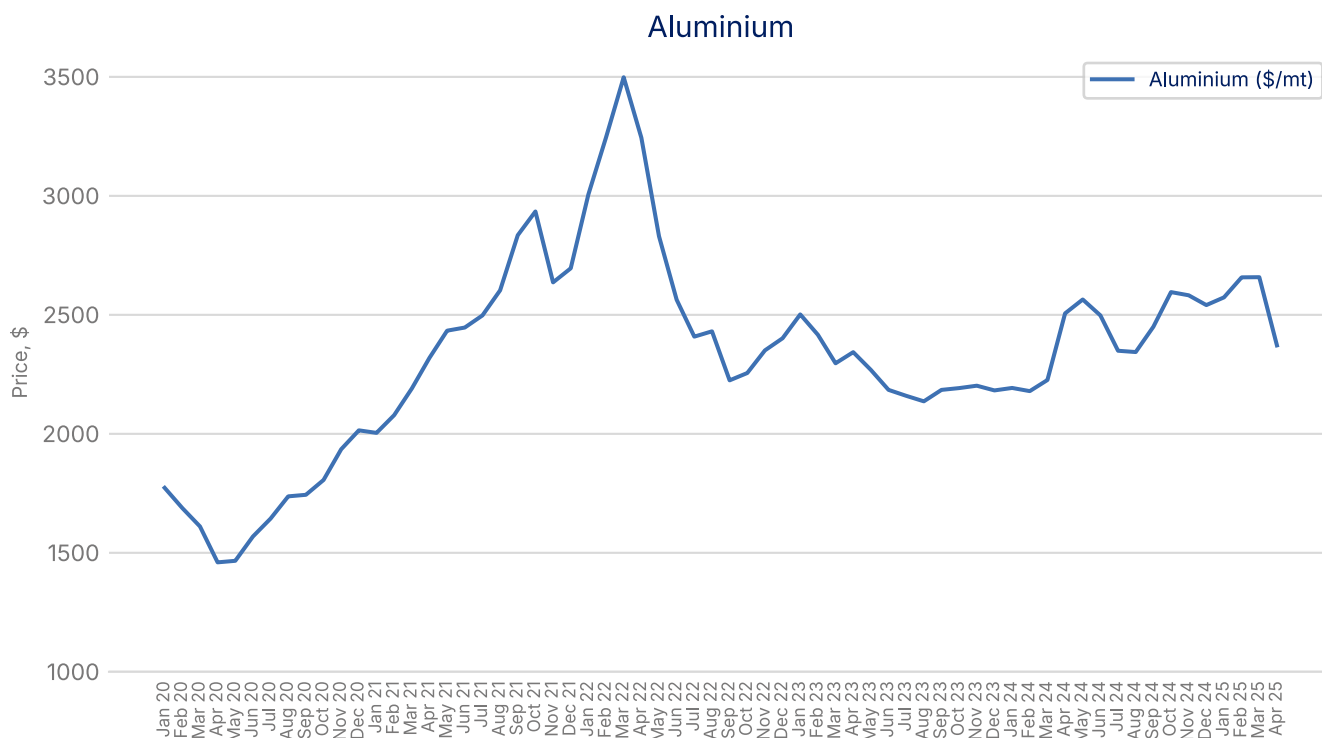
Source: Office for National Statistics

[Note: The release of PPI data is currently being paused by the Office for National Statistics](#)

Prices Dashboard

Data up to April 2025

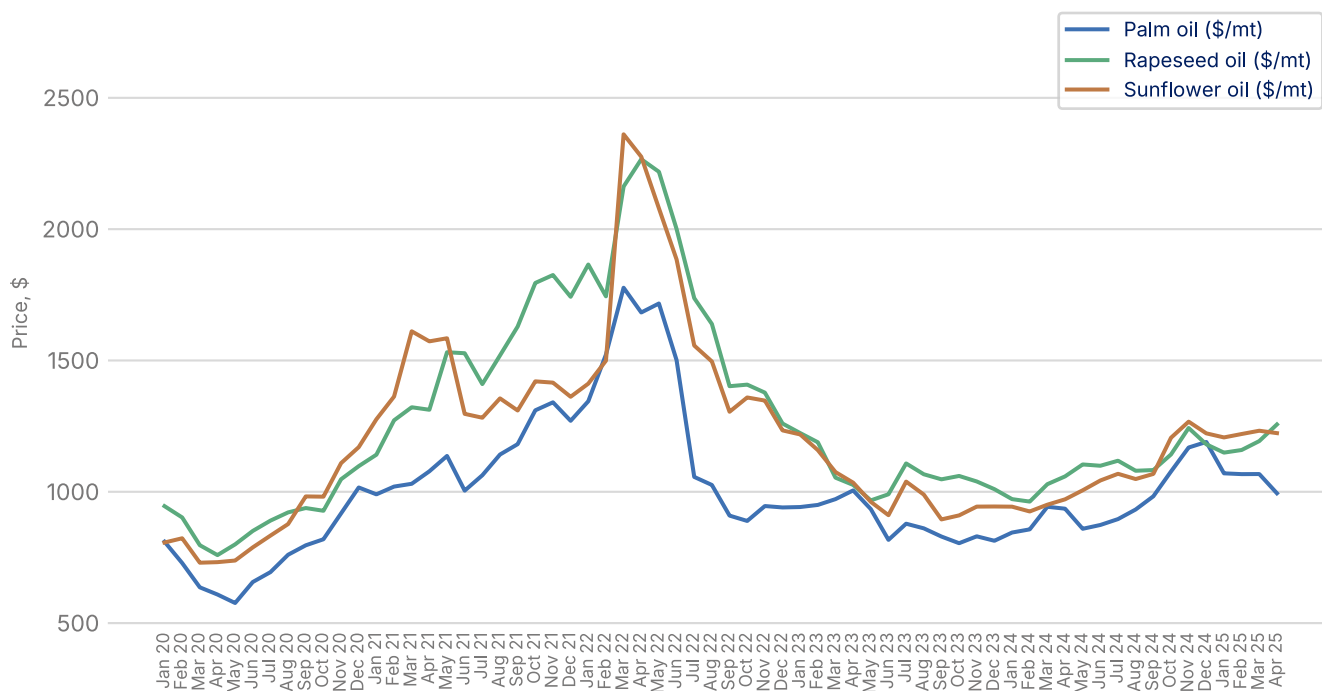
[Back to Title Page](#)



Source: World Bank Commodity Price Data

Agricultural raw materials

Palm oil, rapeseed oil and sunflower oil



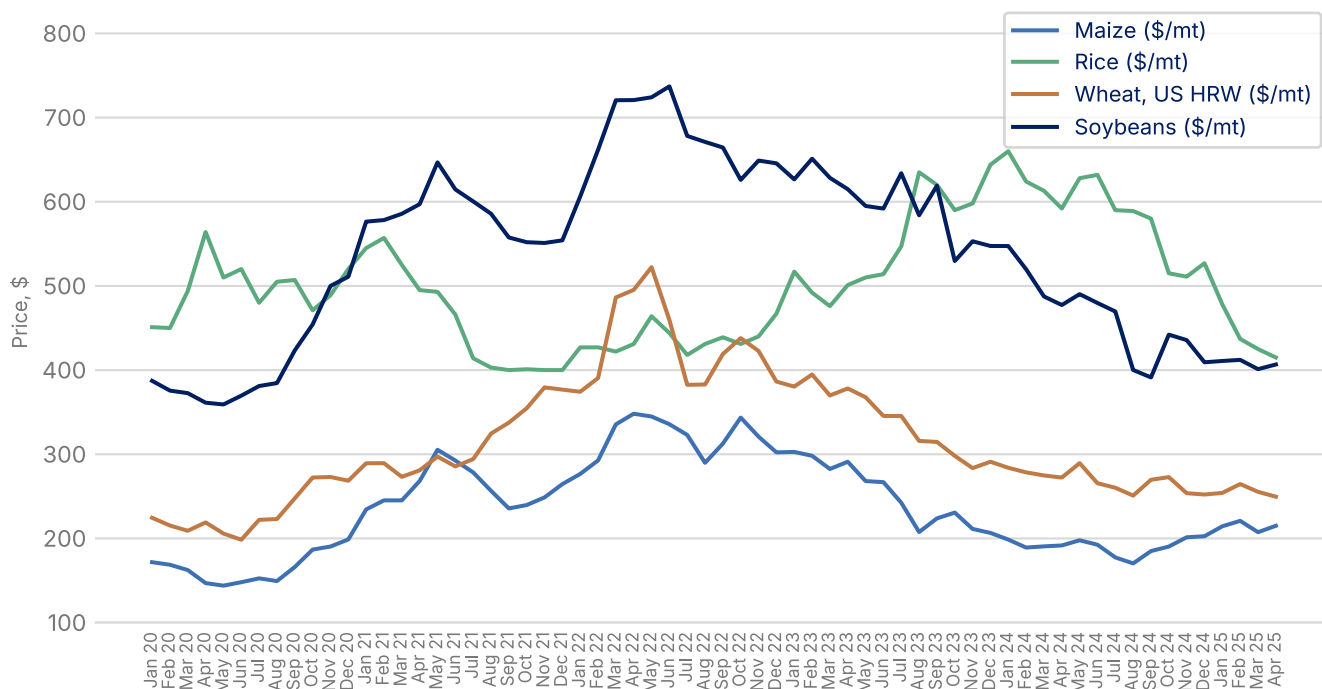
Source: World Bank Commodity Price Data

Prices Dashboard

Data up to April 2025

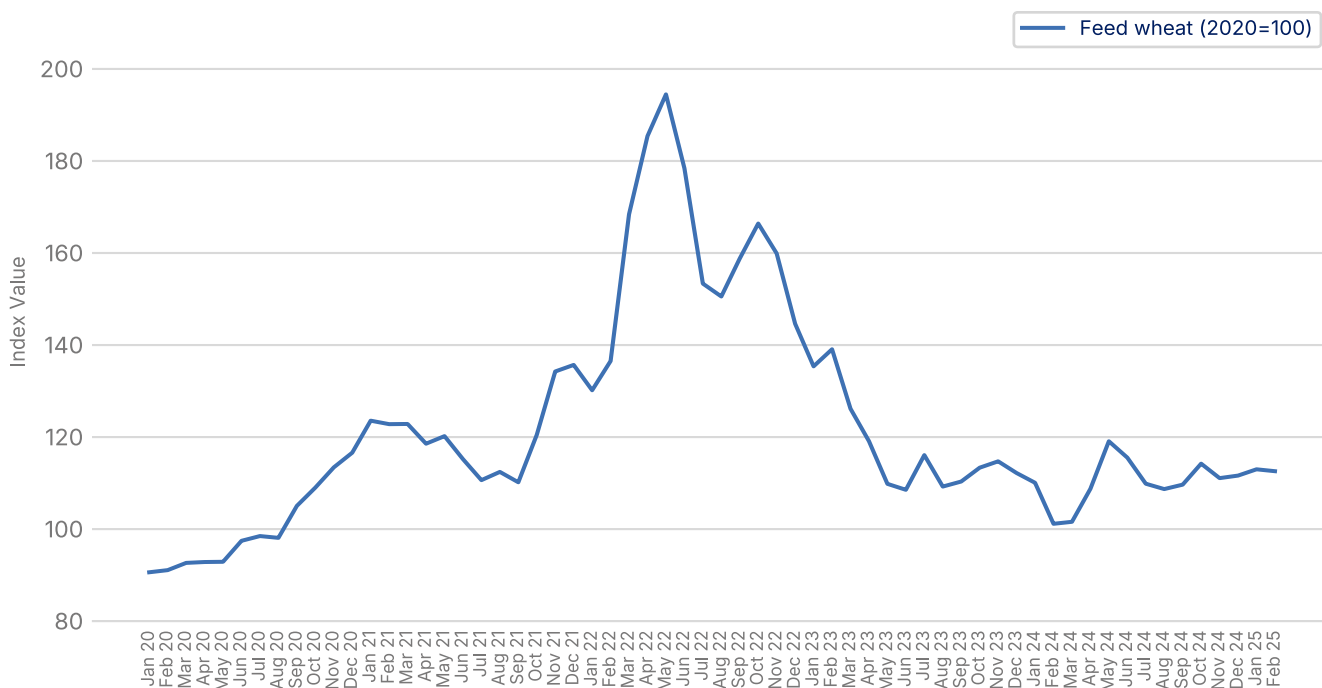
[Back to Title Page](#)

Maize, rice, wheat and soybeans



Source: World Bank Commodity Price Data

Feed wheat



Source: Department for Environment, Food & Rural Affairs

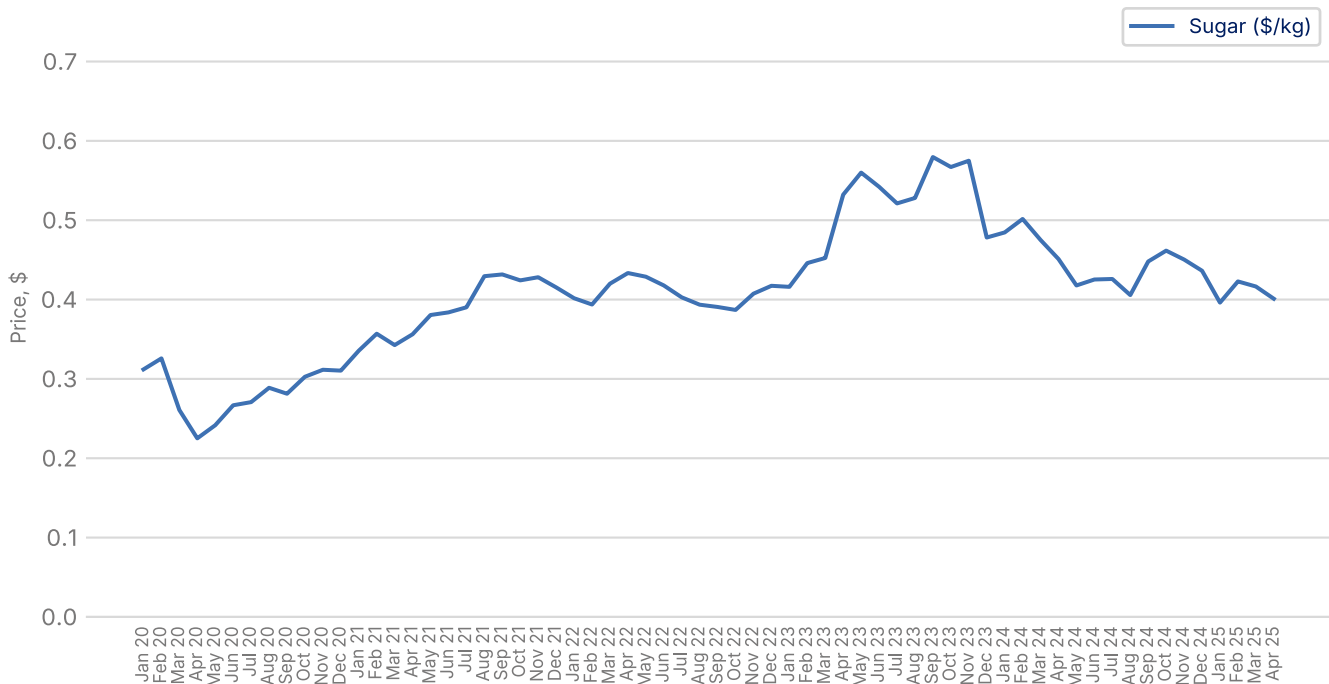
Note: This data is only available to February 2025

Prices Dashboard

Data up to April 2025

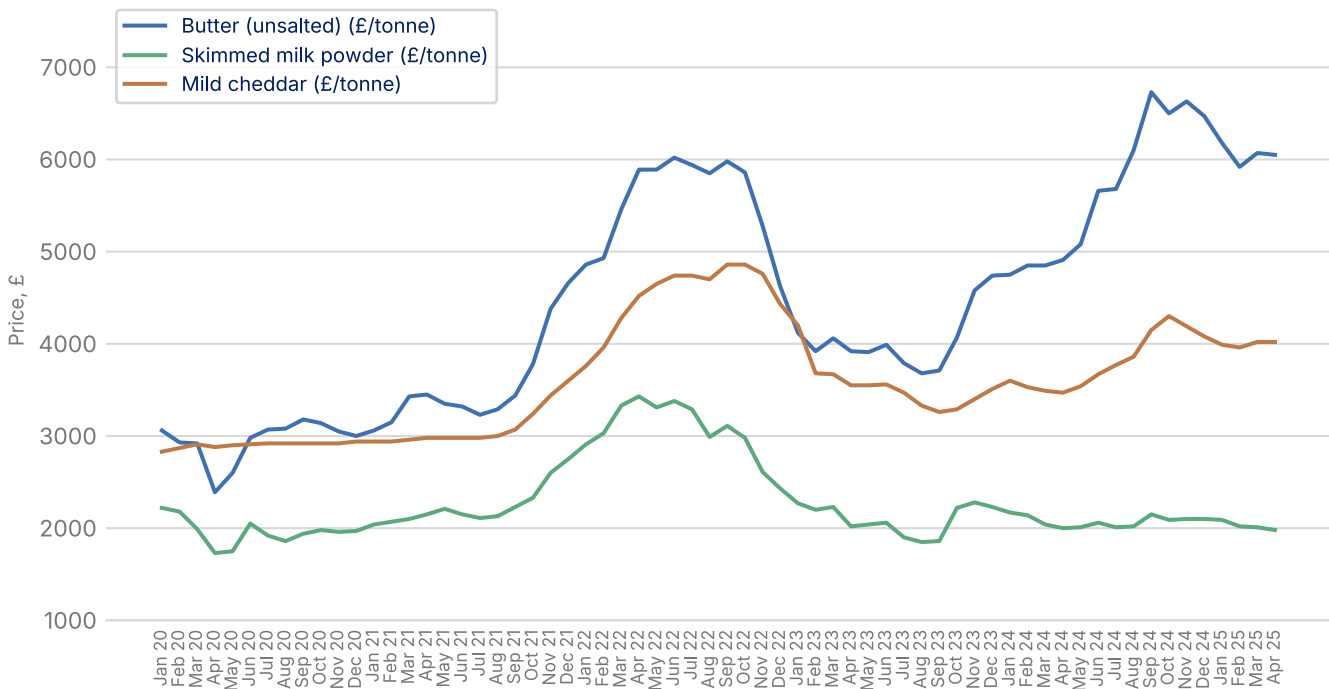
[Back to Title Page](#)

Sugar



Source: World Bank Commodity Price Data

Butter, mild cheddar and skimmed milk powder



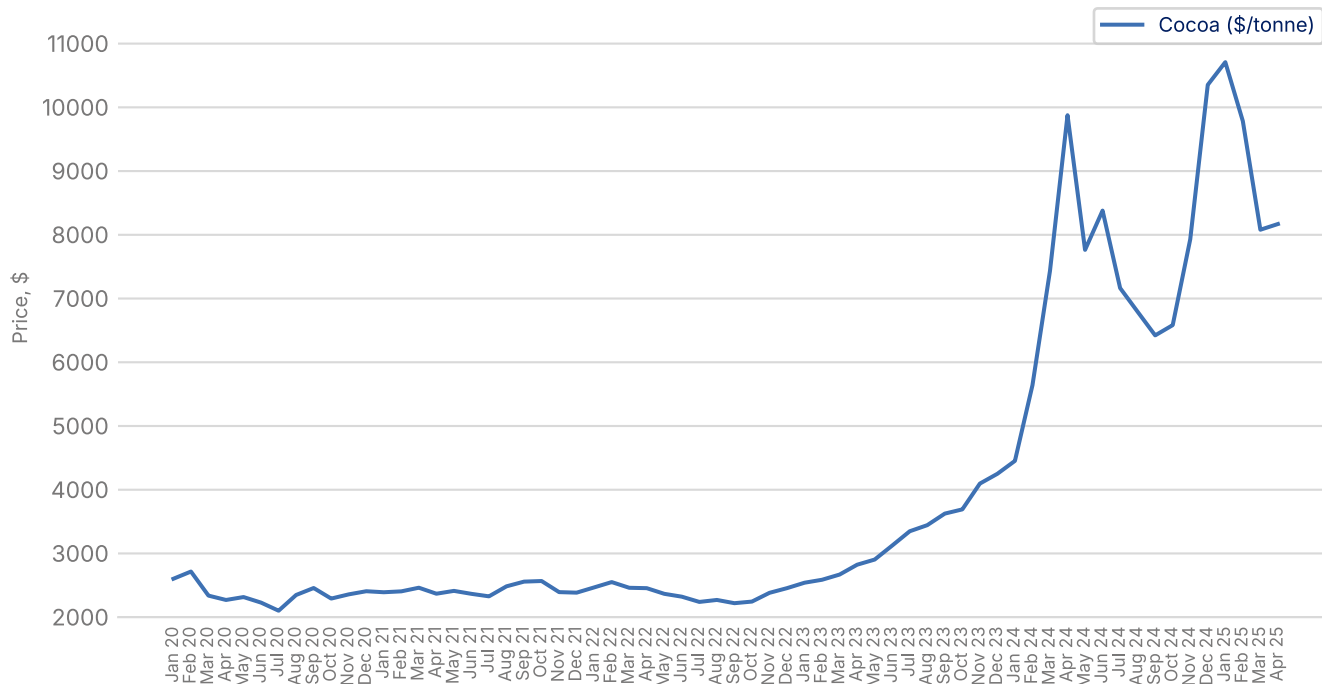
Source: Agriculture and Horticulture Development Board (AHDB)

Prices Dashboard

Data up to April 2025

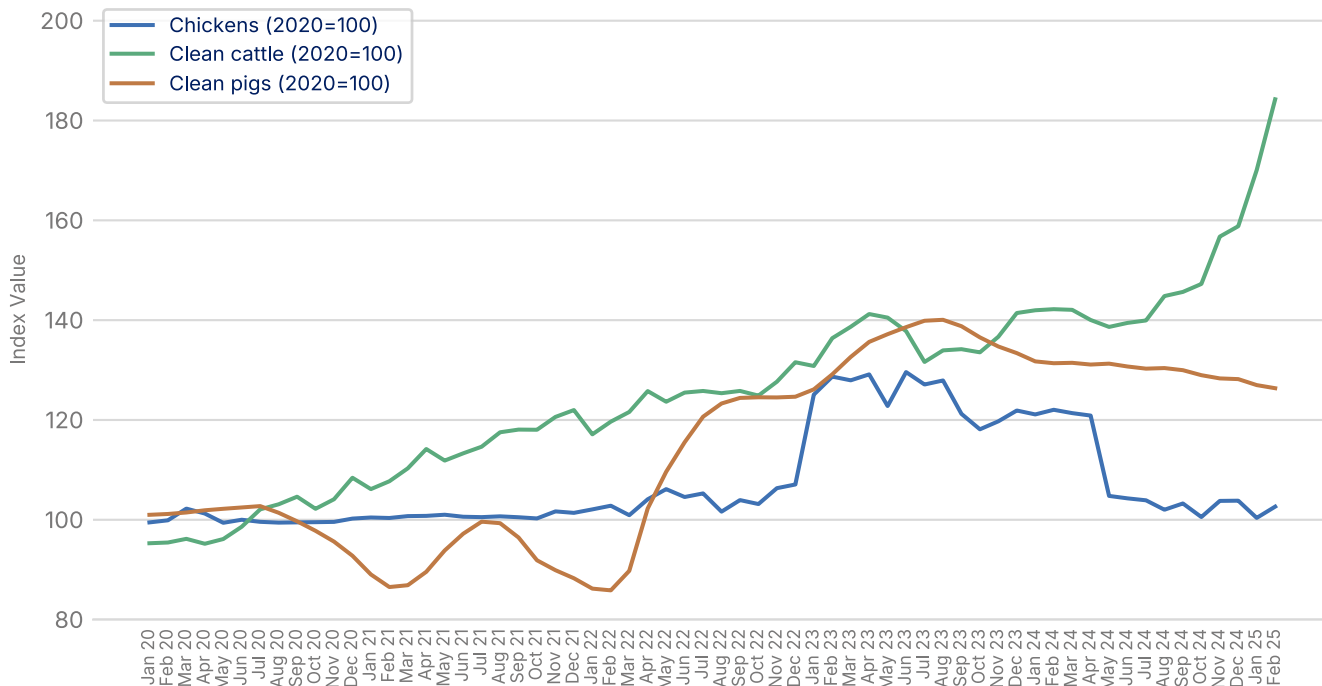
[Back to Title Page](#)

Cocoa



Source: International Cocoa Organization

Chicken, beef and pork



Source: Department for Environment, Food & Rural Affairs

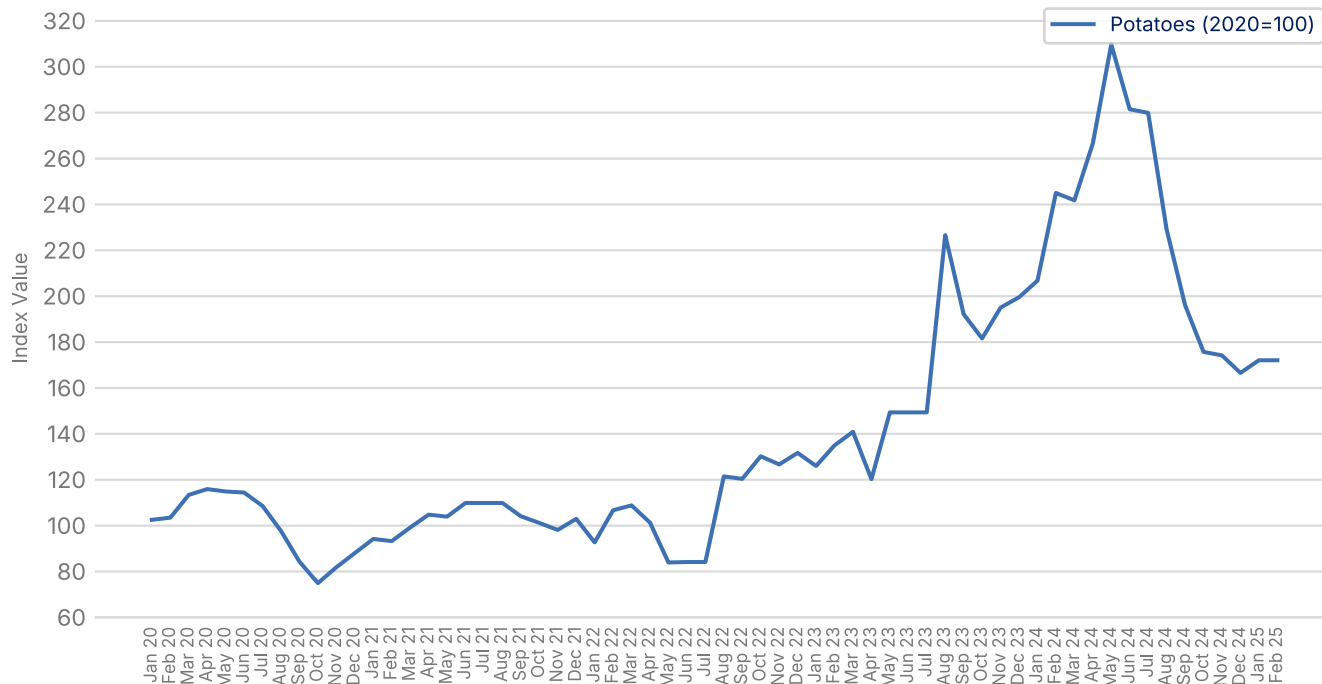
Note: This data is only available to February 2025

Prices Dashboard

Data up to April 2025

[Back to Title Page](#)

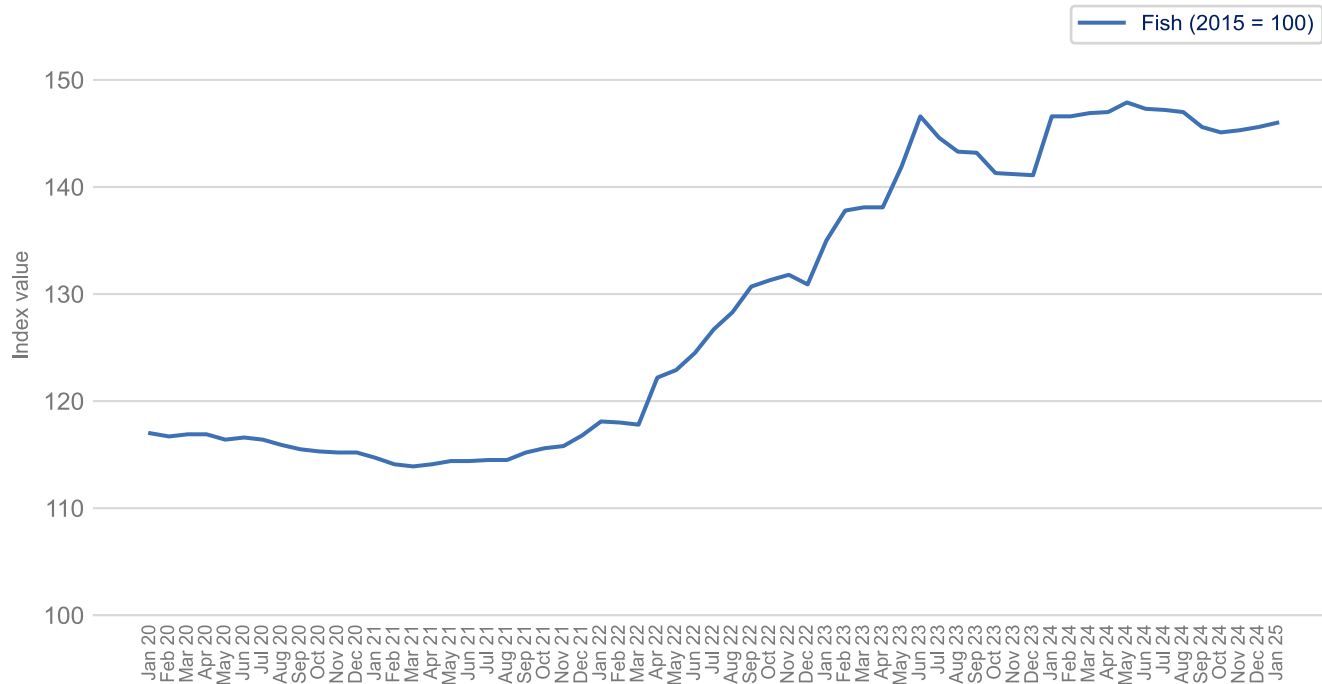
Potatoes



Source: Department for Environment, Food & Rural Affairs

Note: This data is only available to February 2025

Preserved and processed fish, crustaceans and molluscs for domestic market



Source: Office for National Statistics

[Note: The release of PPI data is currently being paused by the Office for National Statistics](#)

Sources

Agriculture and Horticulture Development Board (AHDB), UK Wholesale Prices

Department for Environment, Food & Rural Affairs, Agricultural Price Indices

Eurostat, HICP - monthly data (annual rate of change)

Freightos, Global Container Freight Index (FBX)

International Cocoa Organization

Office for National Statistics, Consumer Price Inflation & Producer Price Inflation

The World Bank, Commodity Markets, Monthly Prices

Trading Economics, Commodity Prices

Transport Exchange Group, Road Transport Price Index



The Food and Drink Federation (FDF) is the voice of the food and drink manufacturing industry – the UK's largest manufacturing sector. We contribute over £30 billion to the country's economy, supporting half a million jobs in every region and nation, and producing products that are loved in the UK and around the world. [Food and drink powers our nation.](#)

Find out more about our latest news and the work we do at:

[FDF.org.uk](https://www.fdf.org.uk)

X: [@FoodanddrinkFed](#)

[Linkedin](#)