

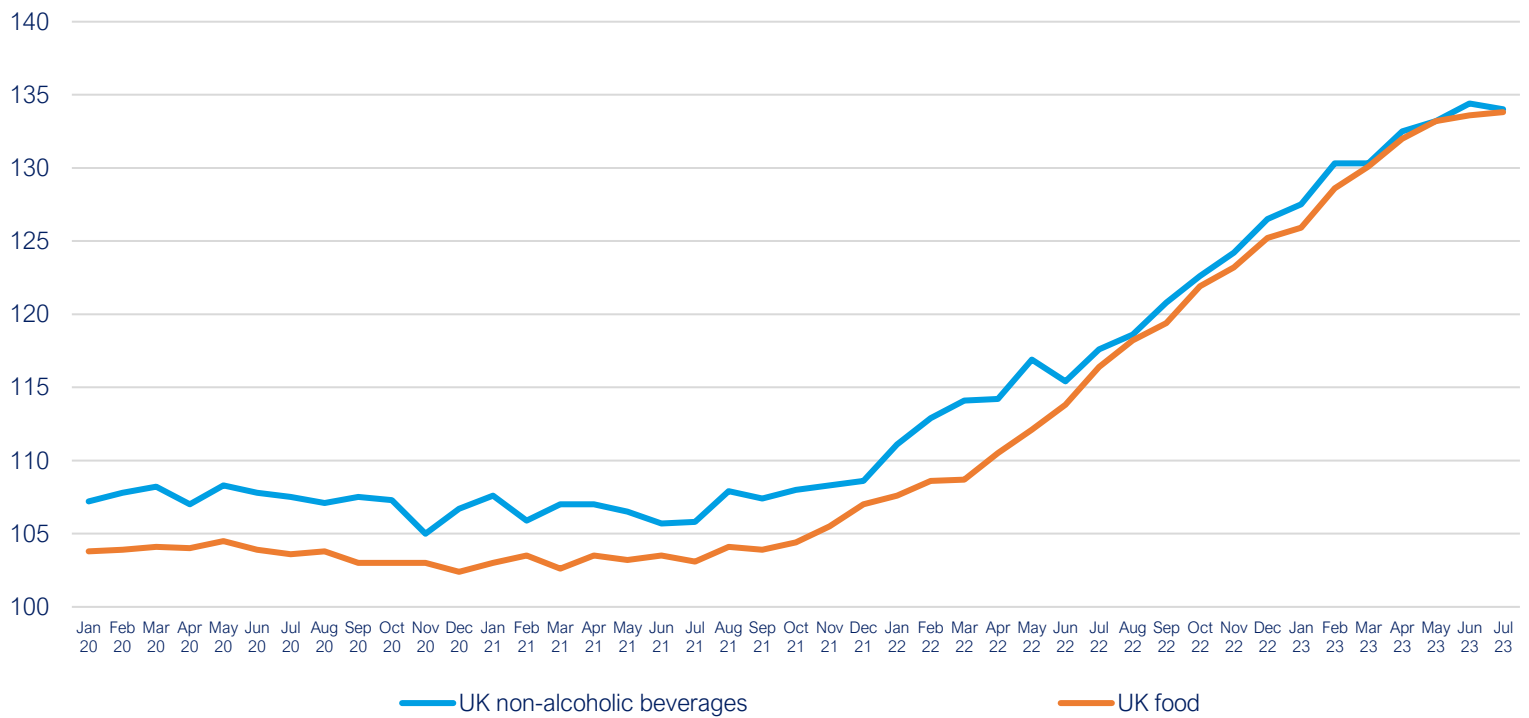
# FDF Prices Dashboard

Data up to July 2023

Category		Value	Monthly change, %	Yearly change, %
<b>UK food and non-alcoholic drink inflation (CPIH)</b>				
<a href="#">UK food</a>	Index	133.8	▲ 0.1%	▲ 14.9%
<a href="#">UK non-alcoholic drink</a>	Index	134.0	▼ - 0.3%	▲ 13.9%
<b>UK producer prices (PPI)</b>				
<a href="#">Input prices: domestic food</a>	Index	141.1	▼ - 0.5%	▲ 0.4%
<a href="#">Input prices: imported food</a>	Index	171.4	▲ 0.6%	▲ 16.1%
<a href="#">Output prices: food for domestic market</a>	Index	134.0	▼ - 0.3%	▲ 6.3%
<b>Energy prices and transportation</b>				
<a href="#">Crude oil, brent (\$/bbl)</a>	Price	80	▲ 7.0%	▼ - 28.7%
<a href="#">Natural gas (\$/mmbtu)</a>	Price	10	▼ - 7.8%	▼ - 67.3%
<a href="#">UK natural gas (£/thm)</a>	Price	71	▼ - 22.4%	▼ - 79.9%
<a href="#">Shipping container rates</a>	Index	1293.3	▼ - 4.8%	▼ - 79.7%
<a href="#">UK haulage</a>	Index	119.7	▼ - 2.1%	▼ - 2.6%
<a href="#">Fertiliser</a>	Index	175.7	▼ - 9.7%	▼ - 44.4%
<b>Packaging</b>				
<a href="#">Paper and paperboard</a>	Index	134.3	▼ - 1.5%	▼ - 4.4%
<a href="#">Wooden containers</a>	Index	152.1	▼ - 0.2%	▼ - 4.6%
<a href="#">Aluminium (\$/mt)</a>	Price	2,160	▼ - 4.8%	▼ - 15.7%
<b>Agricultural raw materials</b>				
<a href="#">Sunflower oil (\$/mt)</a>	Price	1,039	▲ 14.0%	▼ - 33.3%
<a href="#">Rapeseed oil (\$/mt)</a>	Price	1,108	▲ 11.9%	▼ - 36.2%
<a href="#">Palm oil (\$/mt)</a>	Price	879	▲ 7.5%	▼ - 16.9%
<a href="#">Wheat, US HRW (\$/mt)</a>	Price	346	▬ 0.0%	▼ - 6.5%
<a href="#">Maize (\$/mt)</a>	Price	242	▼ - 9.2%	▼ - 25.0%
<a href="#">Rice (\$/mt)</a>	Price	547	▲ 6.4%	▲ 30.9%
<a href="#">Soybeans (\$/mt)</a>	Price	634	▲ 7.1%	▼ - 6.5%
<a href="#">Feed wheat (UK)</a>	Index	122	▼ - 5.9%	▼ - 32.0%
<a href="#">Sugar (\$/kg)</a>	Price	0.52	▼ - 3.9%	▲ 29.4%
<a href="#">Cheese (£/tonne)</a>	Price	3,470	▼ - 2.5%	▼ - 26.8%
<a href="#">Butter (£/tonne)</a>	Price	3,790	▼ - 5.0%	▼ - 36.2%
<a href="#">Skimmed milk powder (£/tonne)</a>	Price	1,900	▼ - 7.8%	▼ - 42.2%
<a href="#">Eggs (UK)</a>	Index	153.3	▬ 0.0%	▲ 31.7%
<a href="#">Beef (UK)</a>	Index	140.5	▼ - 0.5%	▲ 13.6%
<a href="#">Chicken (UK)</a>	Index	110.2	▼ - 14.7%	▲ 3.8%
<a href="#">Pork (UK)</a>	Index	137.2	▲ 1.1%	▲ 25.2%
<a href="#">Potatoes (UK)</a>	Index	149.4	▲ 24.2%	▲ 77.9%
<a href="#">Fish (UK)</a>	Index	141.8	▼ - 0.4%	▲ 11.9%

## UK food and non-alcoholic drink inflation (CPIH)

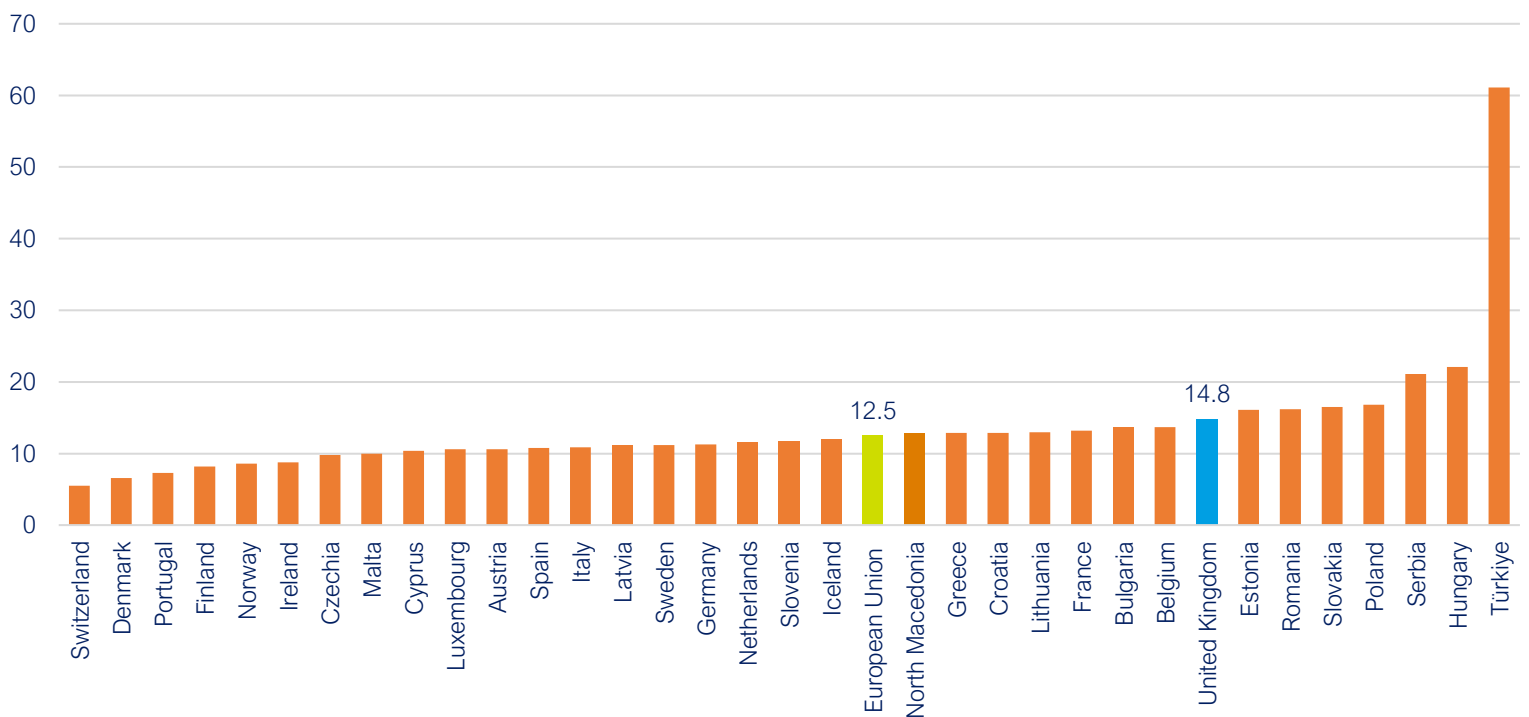
UK food and UK non-alcoholic beverages, 2015=100



Source: Office for National Statistics

## Food and drink inflation comparison with Europe

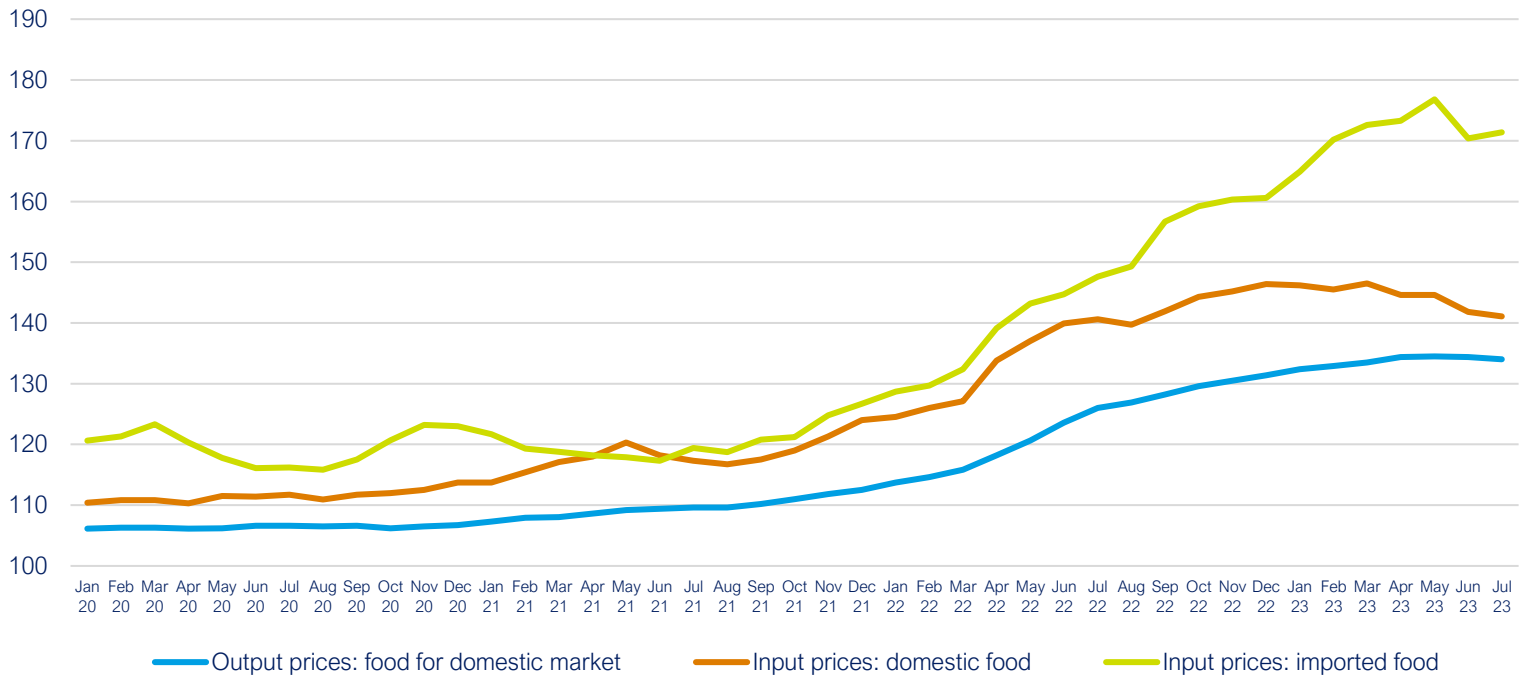
Food and non alcoholic beverages, annual rate of change in price, July 2023



Source: Eurostat

## UK producer prices (PPI)

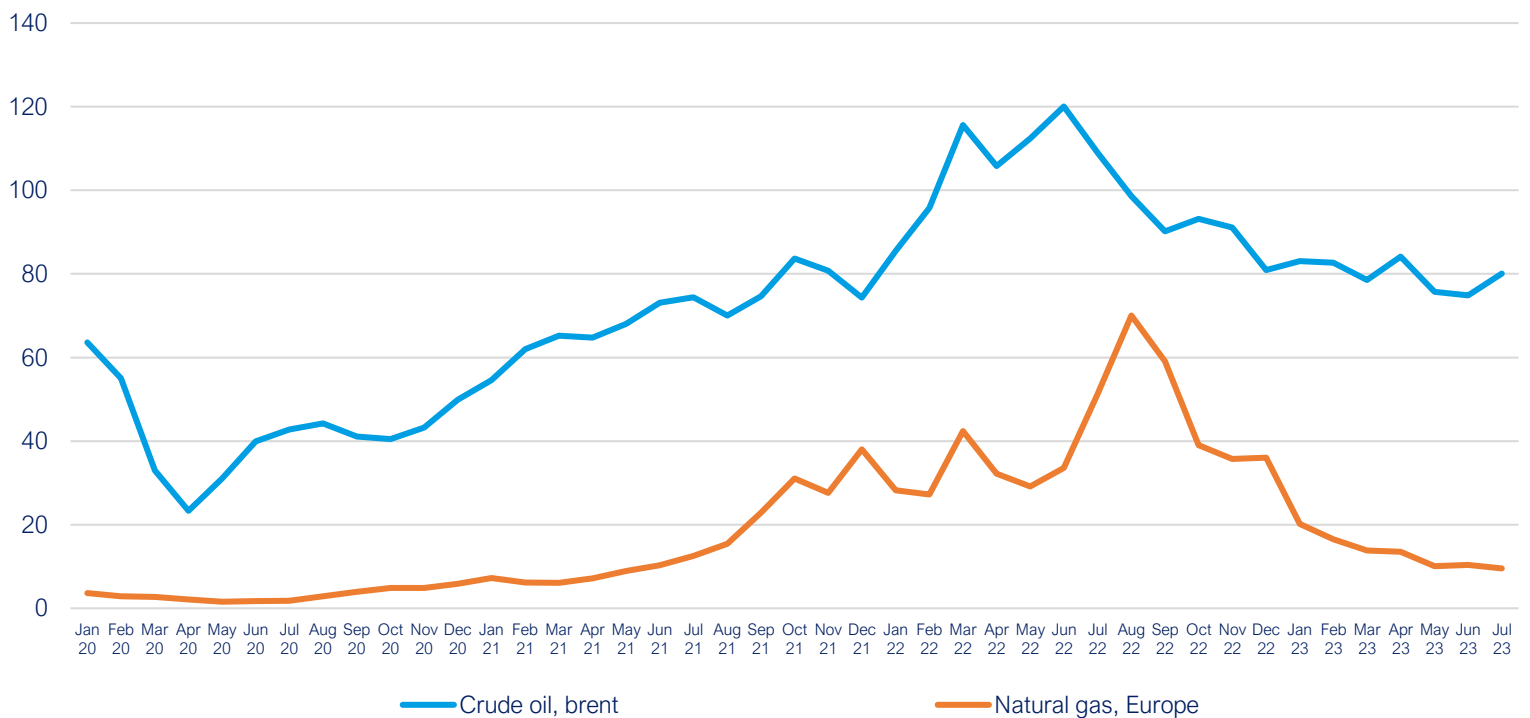
Input prices (domestic food), input prices (imported food), output prices (food for domestic market), 2015 = 100



Source: Office for National Statistics

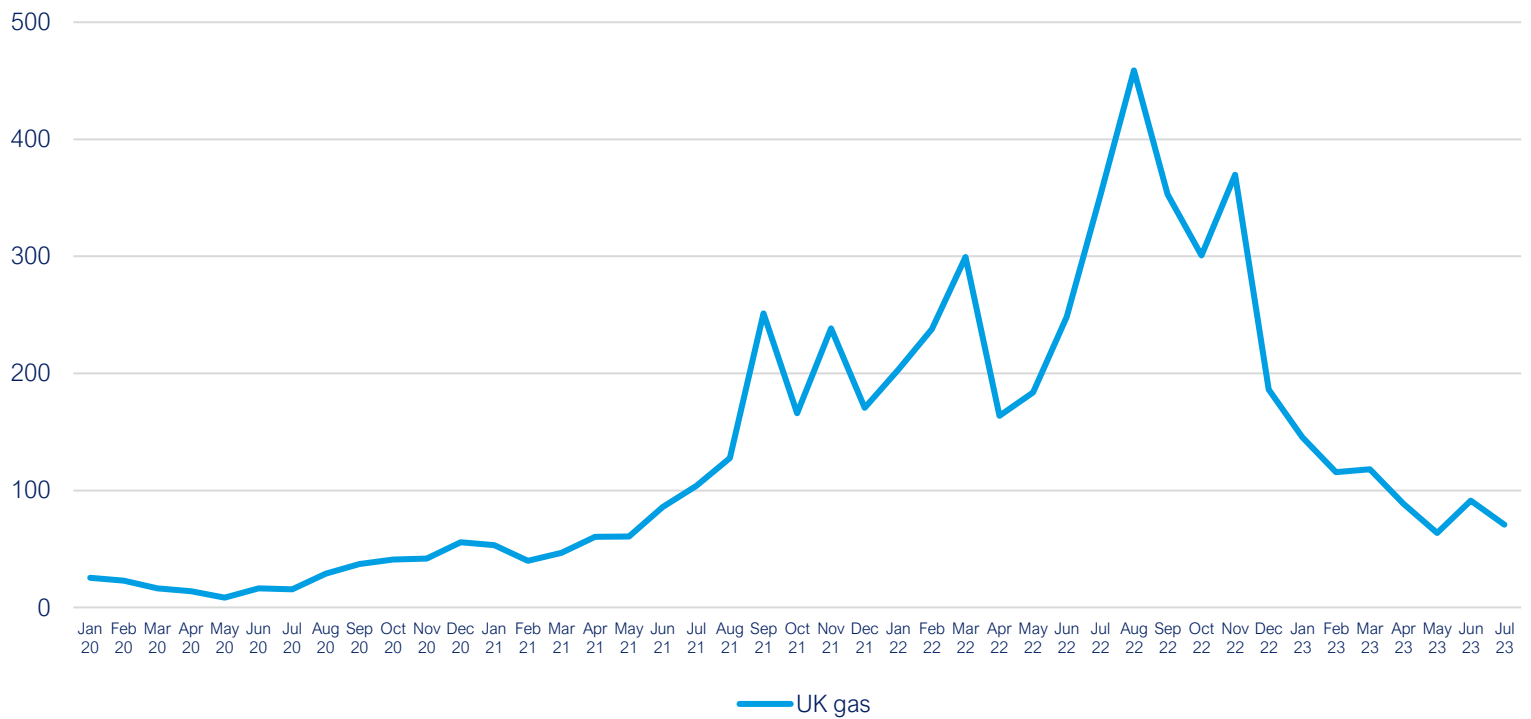
## Energy prices and transportation

Crude oil (\$/bbl) and natural gas (\$/mmbtu)



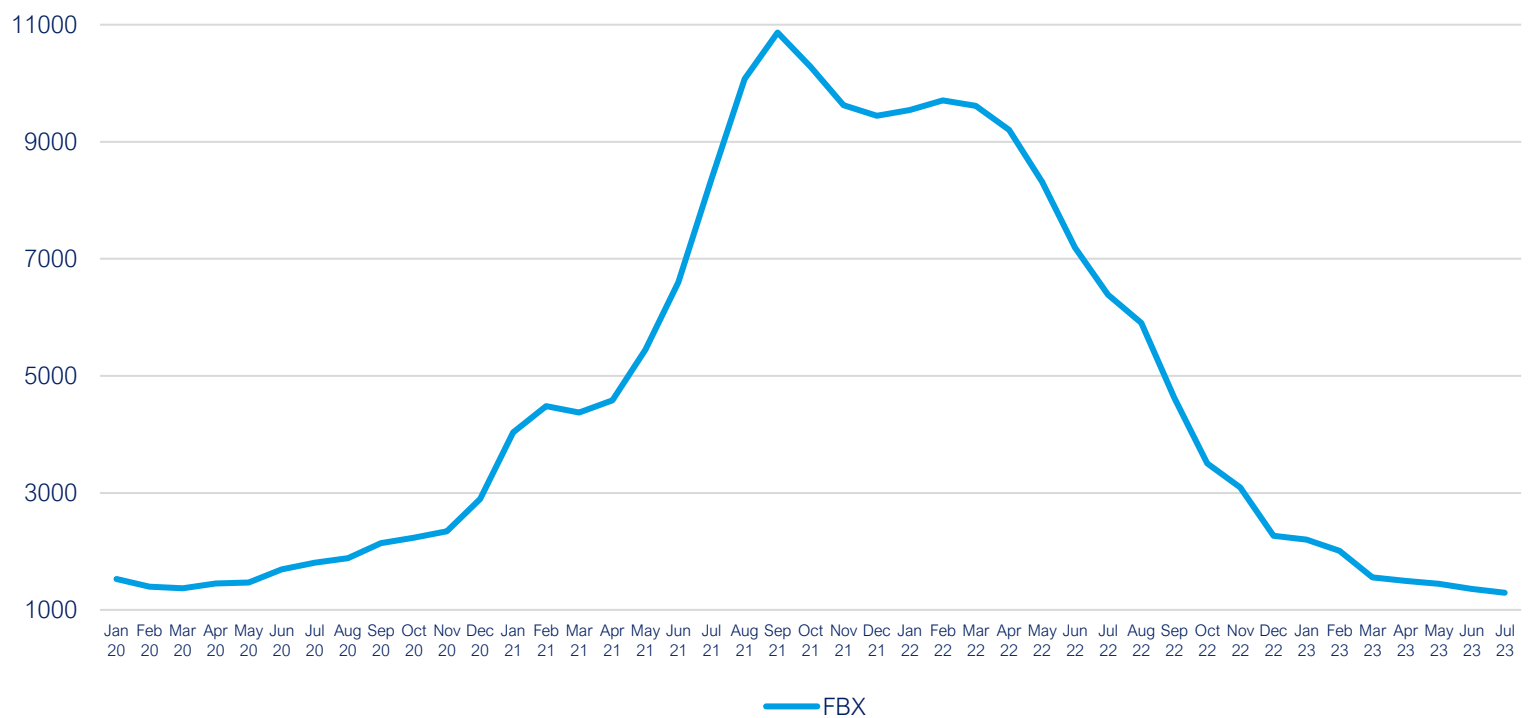
Source: World Bank Commodity Price Data

UK natural gas (£/thm)



Source: Trading Economics

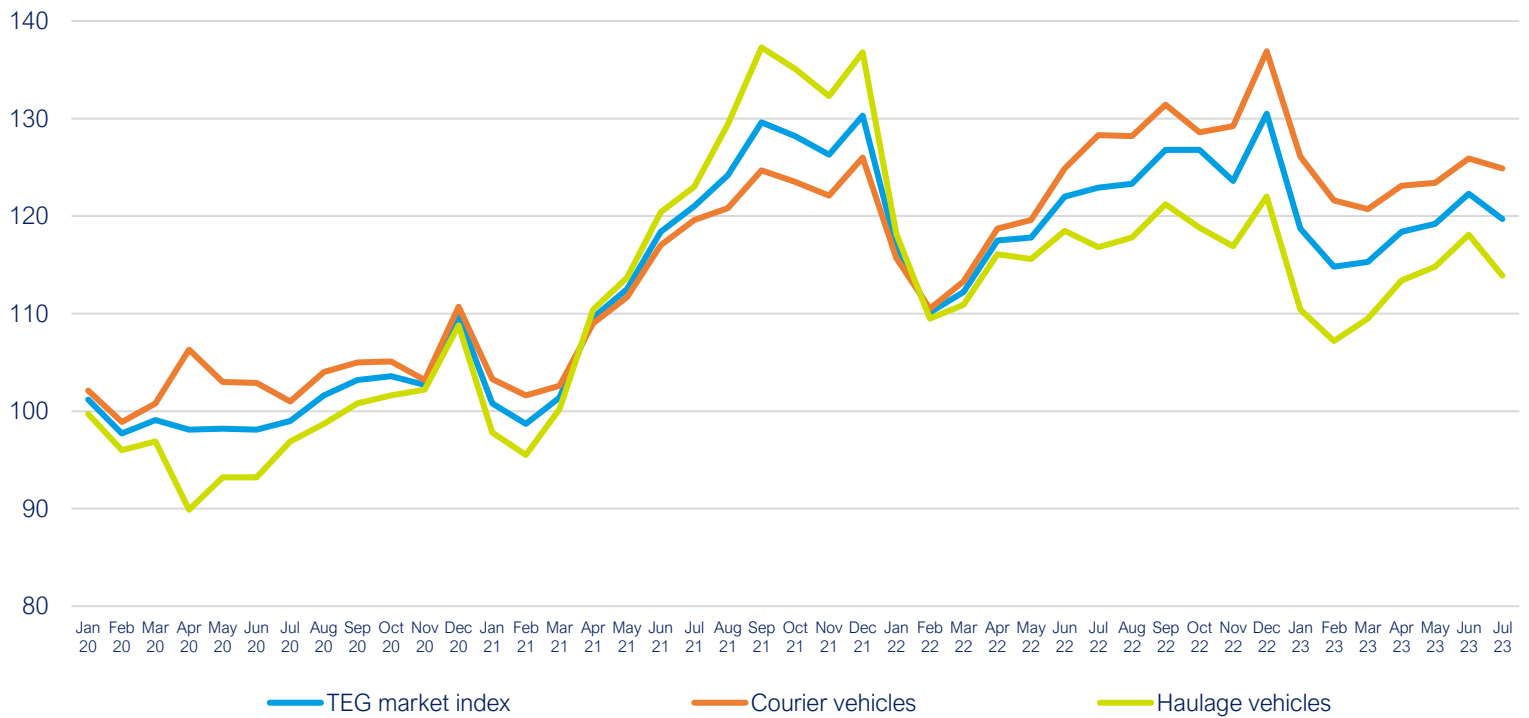
Freightos Baltic Index (FBX): Global Container Freight Index



Source: Freightos, Global Container Index

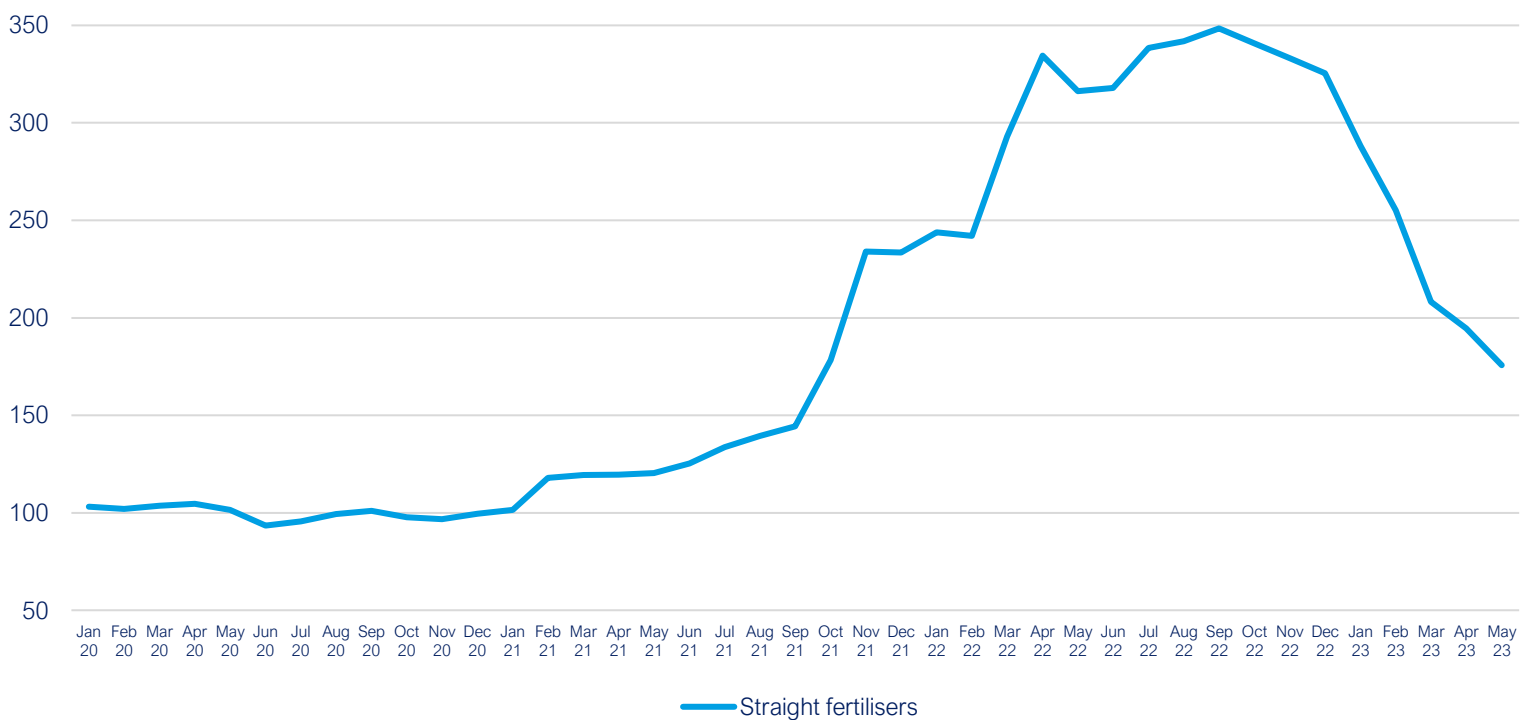
Note: Each monthly index value is an average of the weekly index values of that month

UK haulage, Jan 2019 = 100



Source: Transport Exchange Group

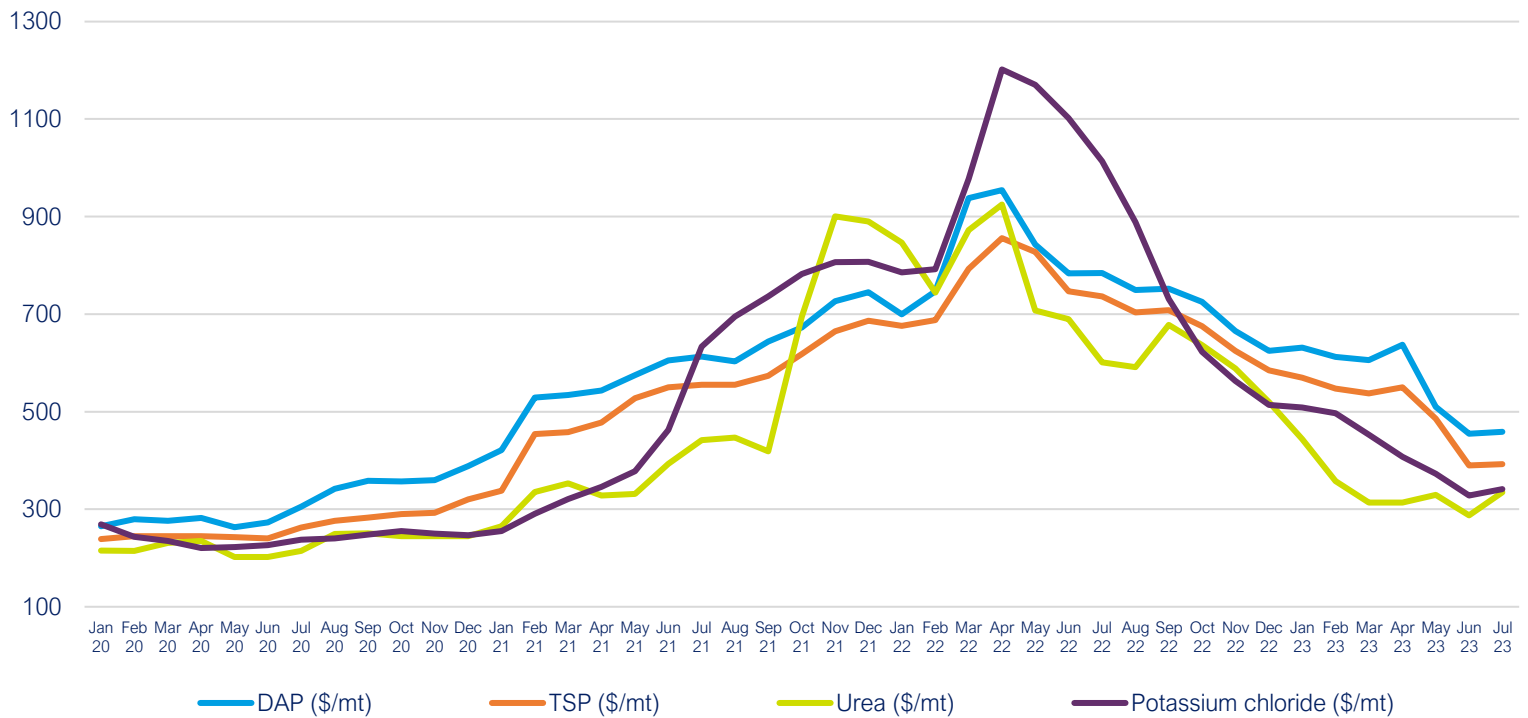
Straight fertilisers, 2020 = 100



Source: Department for Environment, Food & Rural Affairs

Note: This data is only available to May 2023.

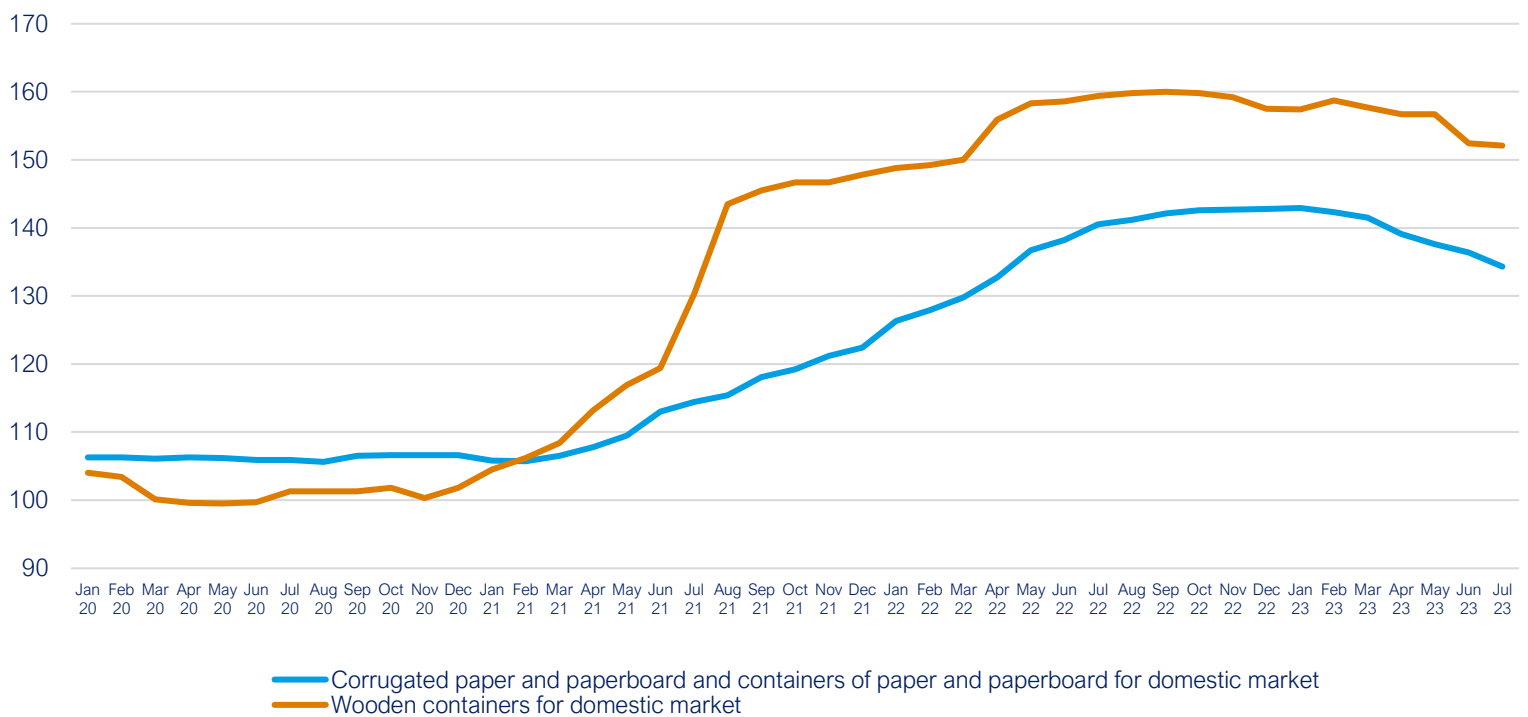
DAP, TSP, Urea, Potassium Chloride, (\$/mt)



Source: World Bank Commodity Price Data

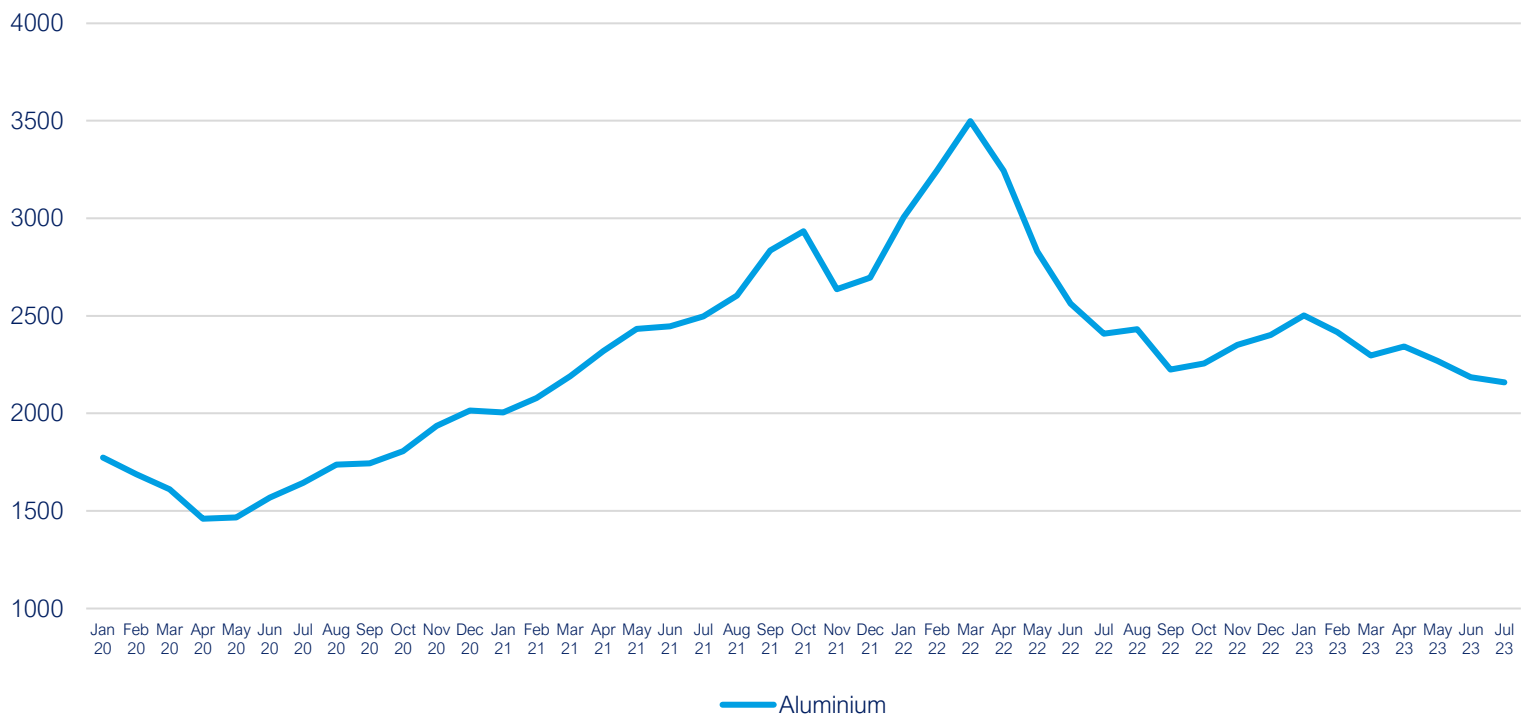
## Packaging

Packaging, 2015 = 100



Source: Office for National Statistics

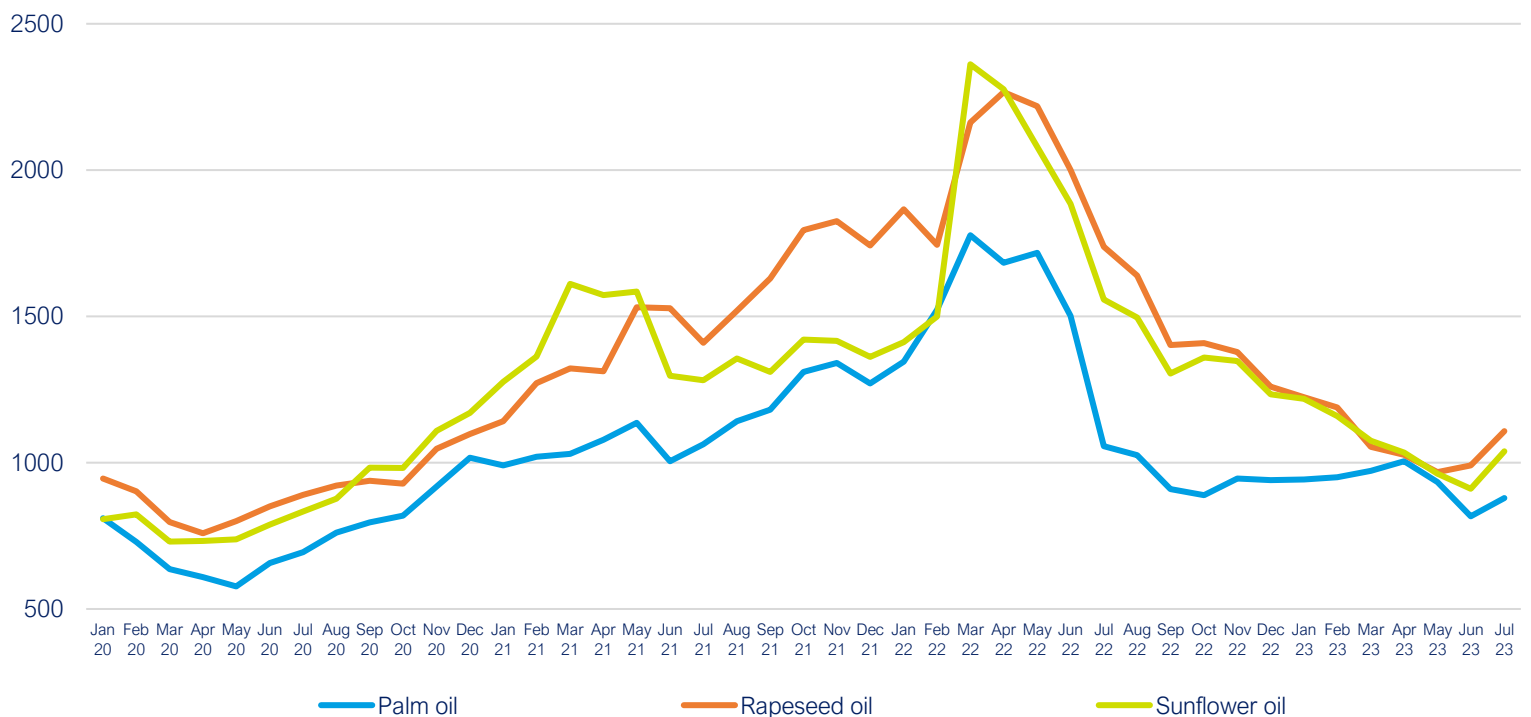
## Aluminium (\$/mt)



Source: World Bank Commodity Price Data

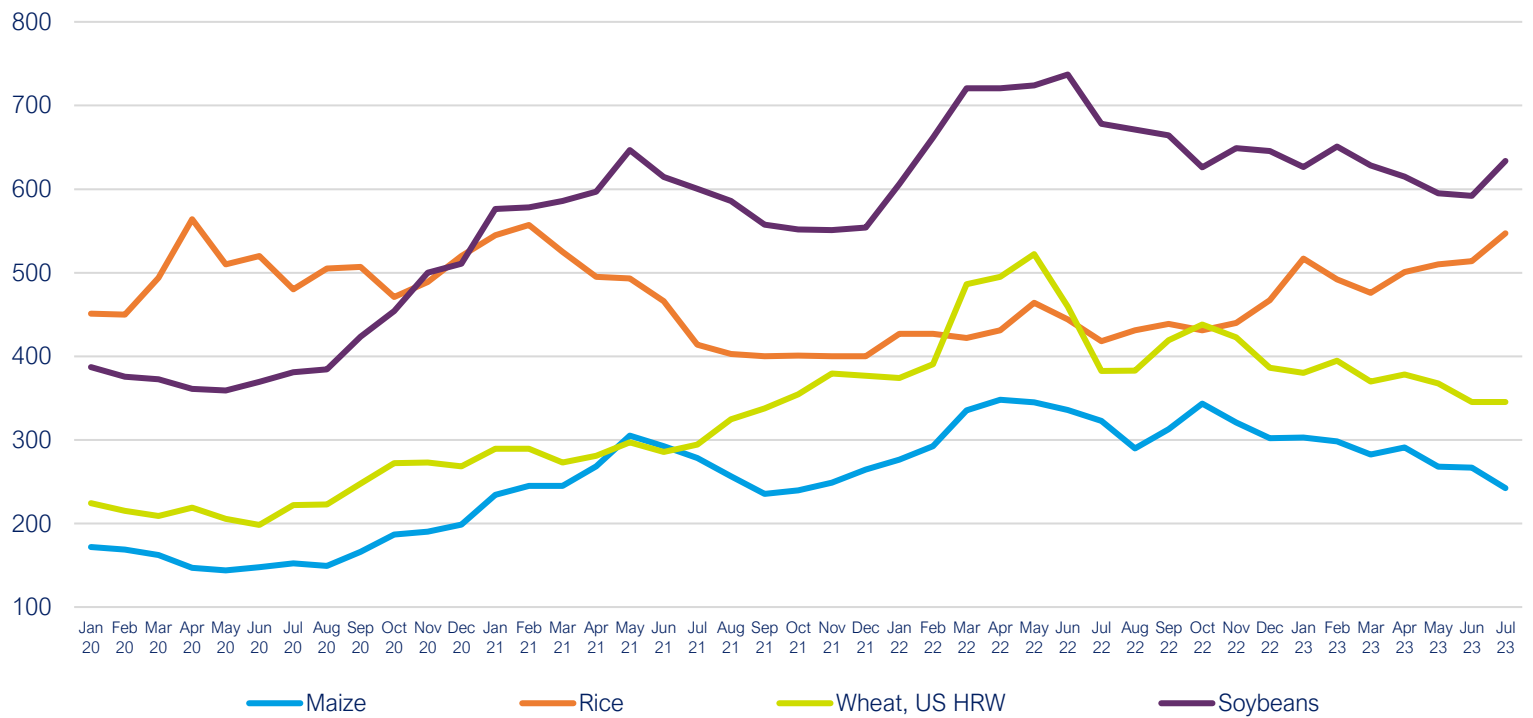
## Agricultural raw materials

### Palm oil, rapeseed oil and sunflower oil (\$/mt)



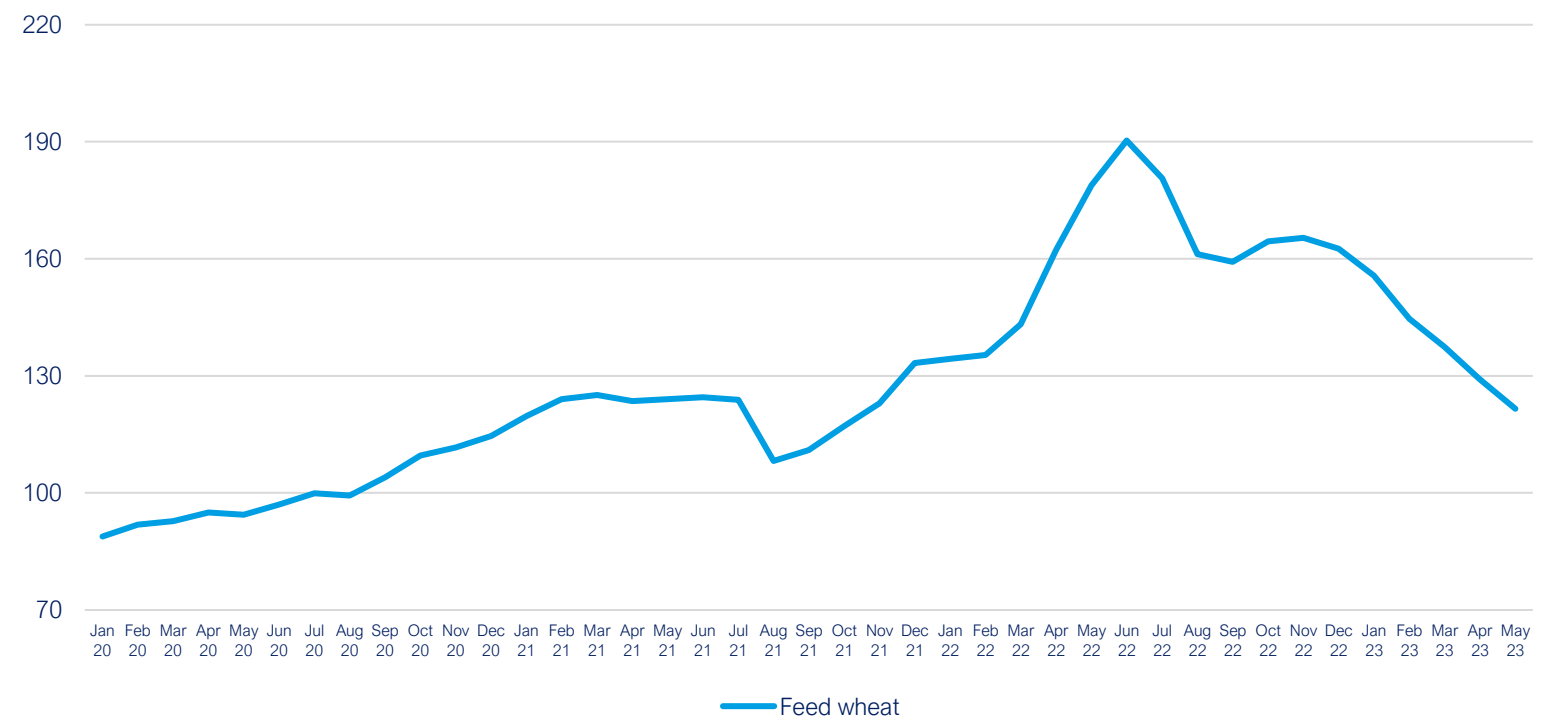
Source: World Bank Commodity Price Data

Maize, rice, wheat and soybeans (\$/mt)



Source: World Bank Commodity Price Data

Feed wheat, 2020 = 100



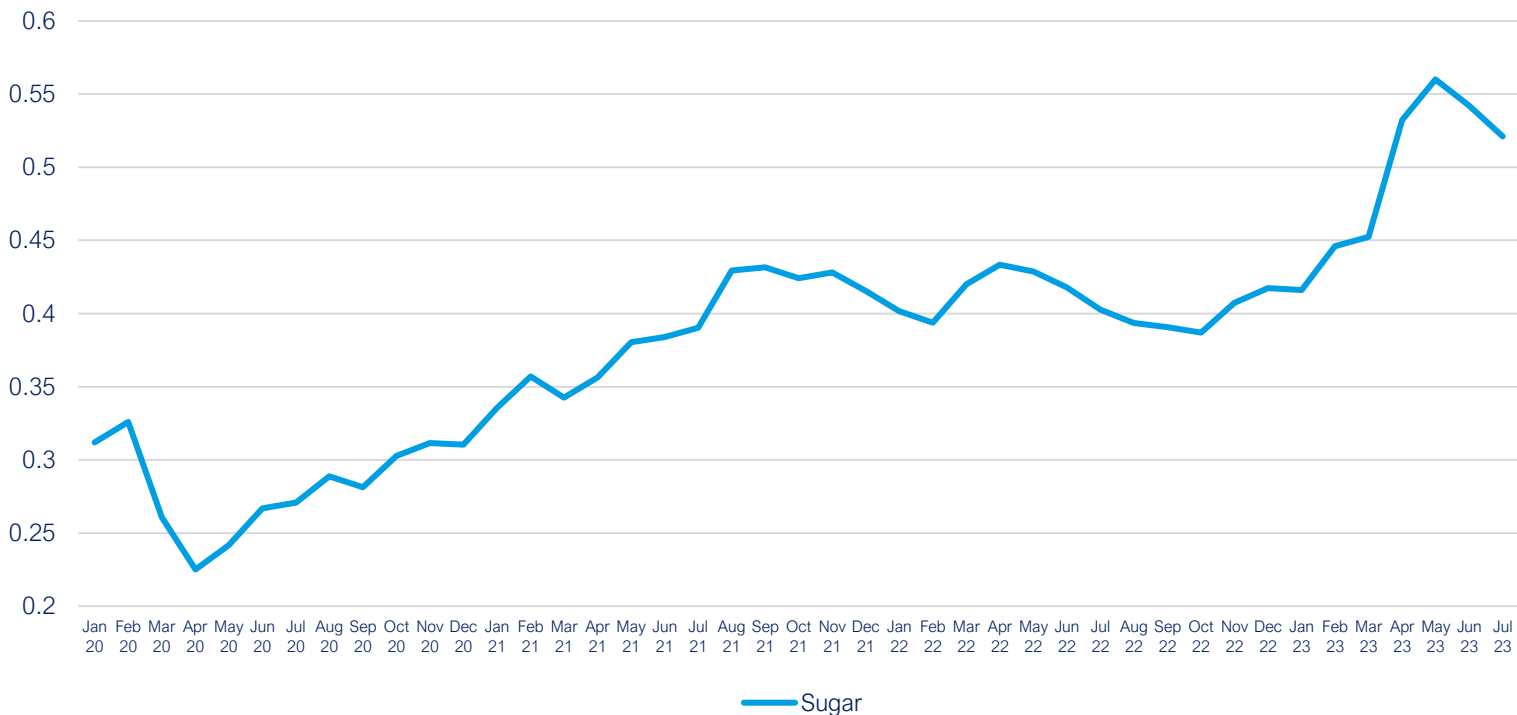
Source: Department for Environment, Food & Rural Affairs

Note: This data is only available to May 2023



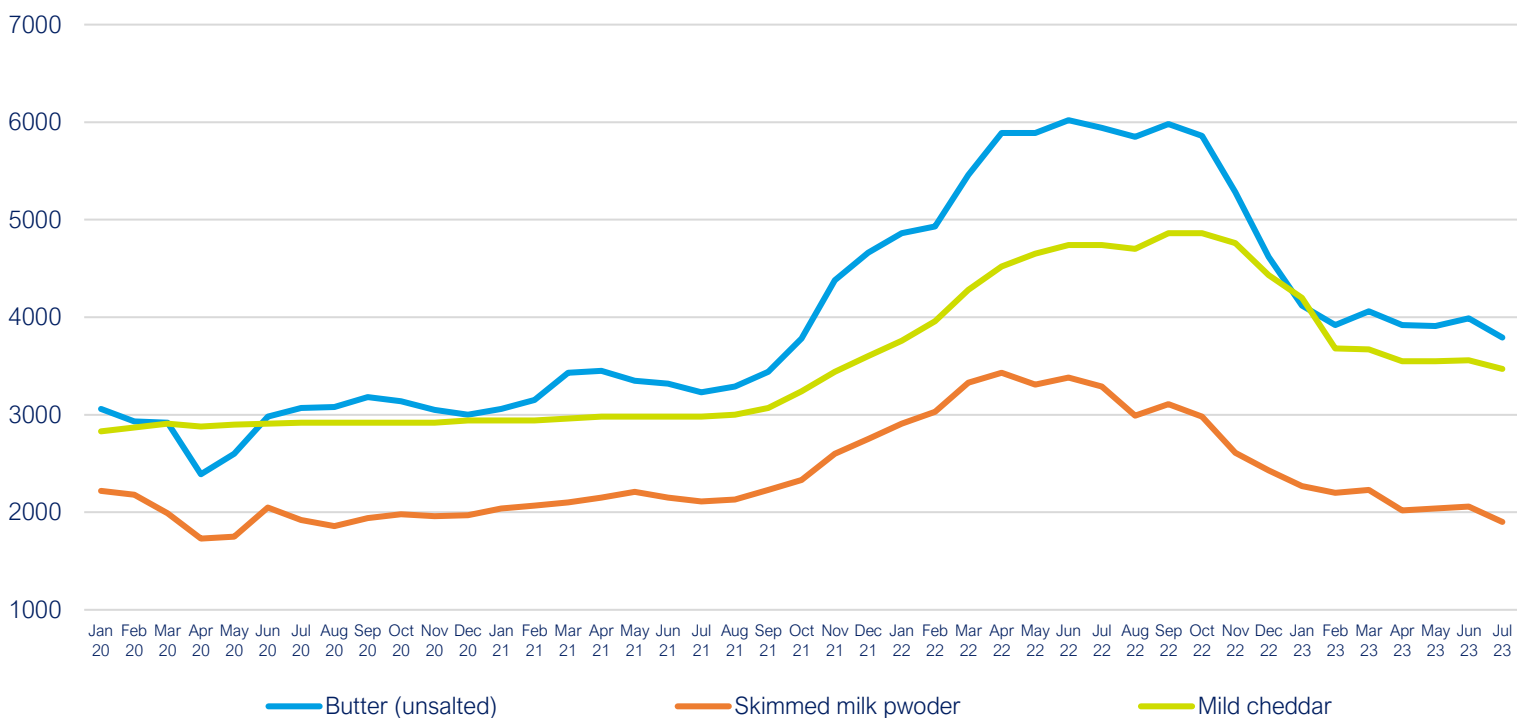
[Back to Title Page](#)

## Sugar (\$/kg)



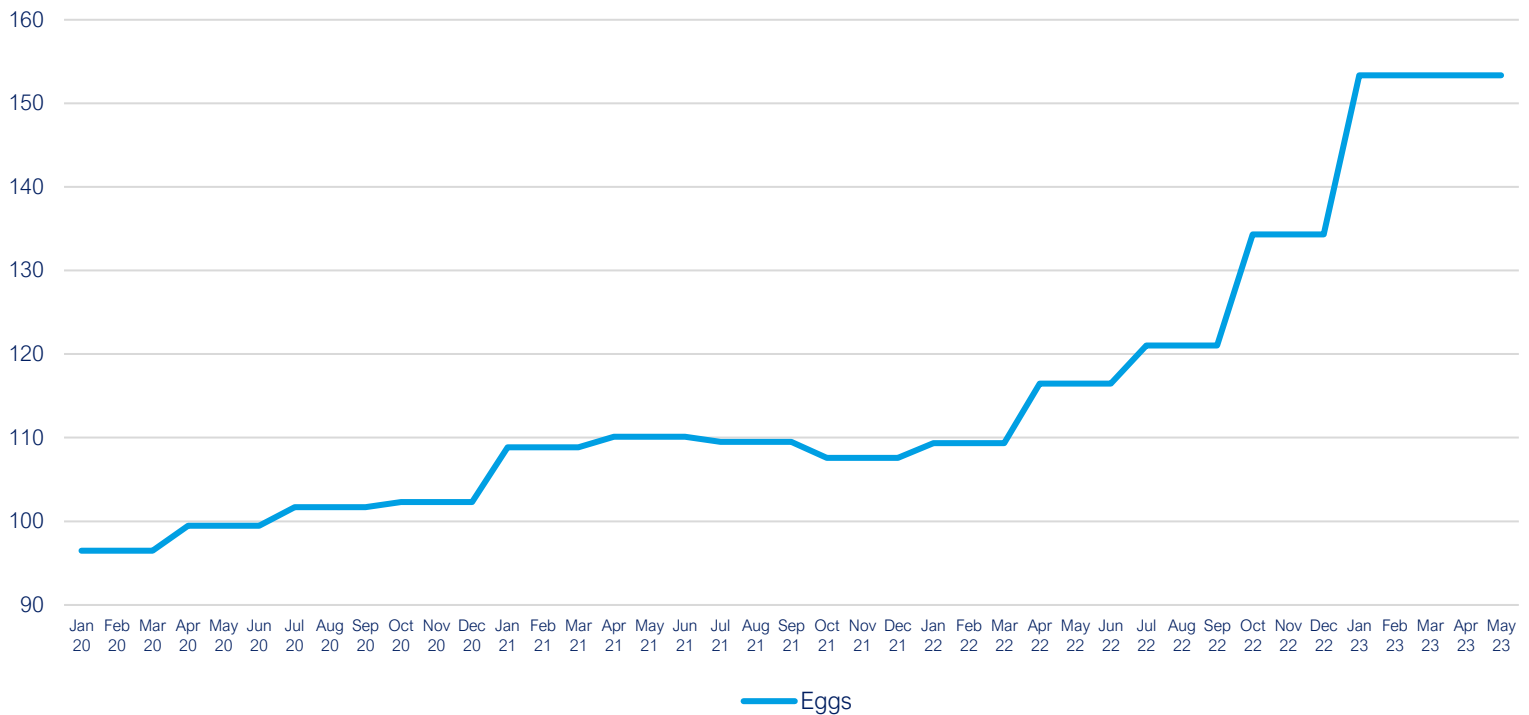
Source: World Bank Commodity Price Data

## Butter, mild cheddar and skimmed milk powder (£/tonne)



Source: Agriculture and Horticulture Development Board (AHDB)

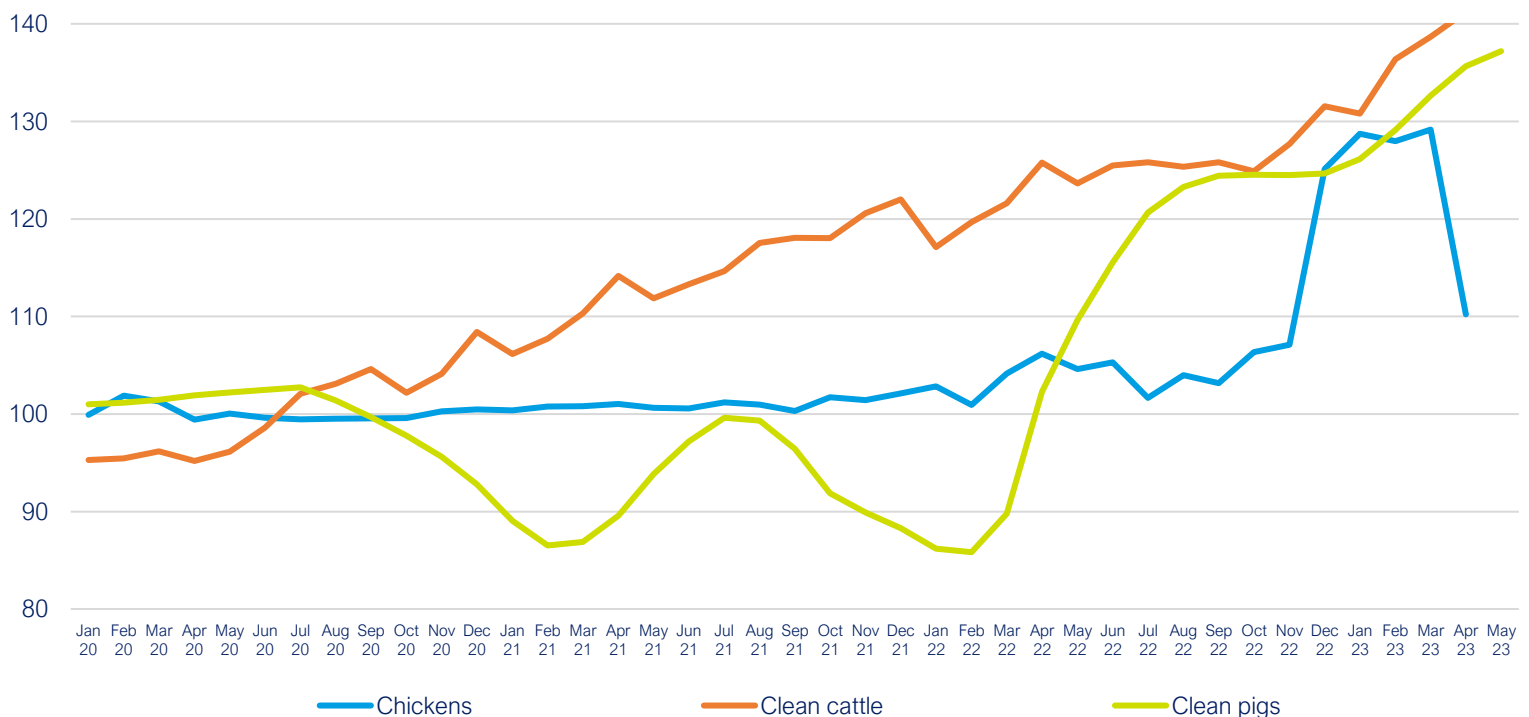
Eggs, 2020 = 100



**Source: Department for Environment, Food & Rural Affairs**

Note: This data is only available to May 2023

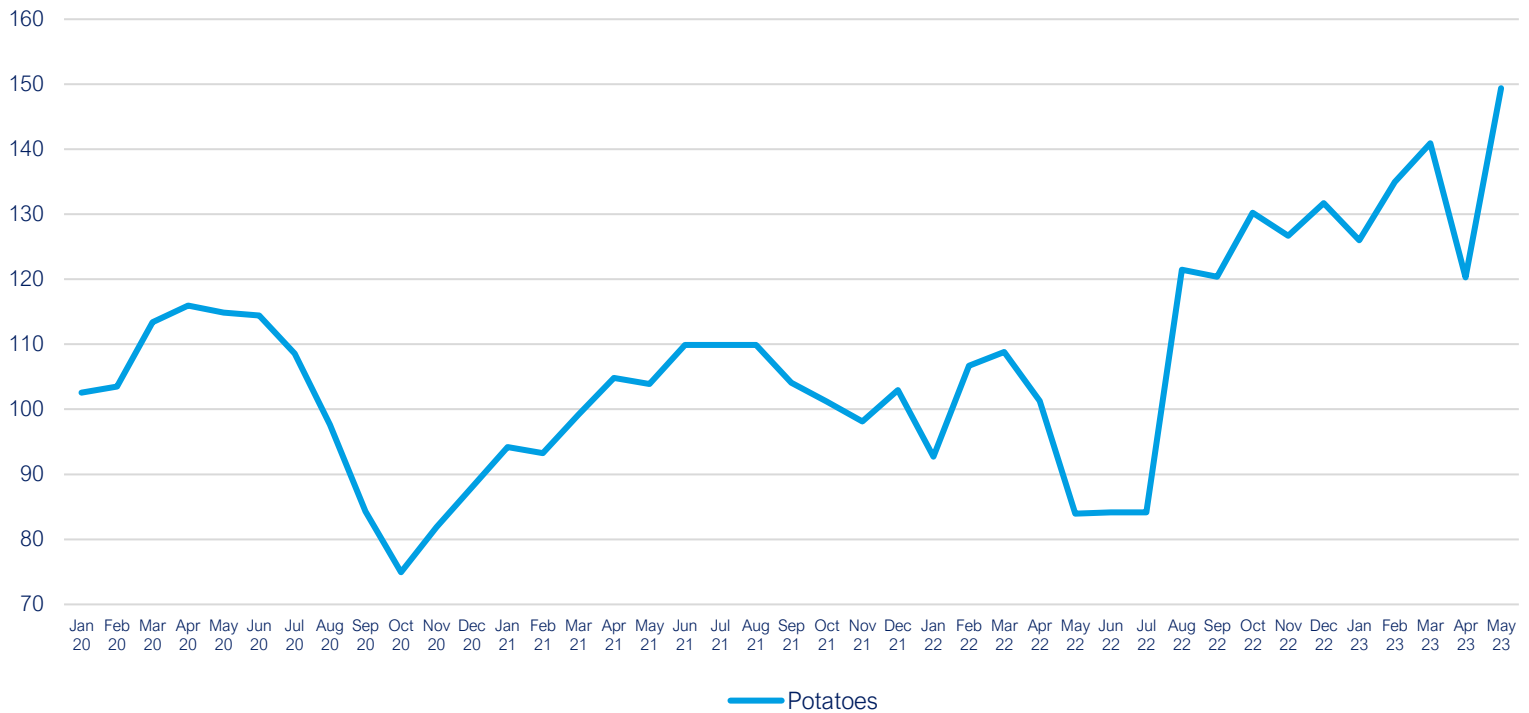
Chicken, beef and pork, 2020 = 100



**Source: Department for Environment, Food & Rural Affairs**

Note: This data is only available to May 2023

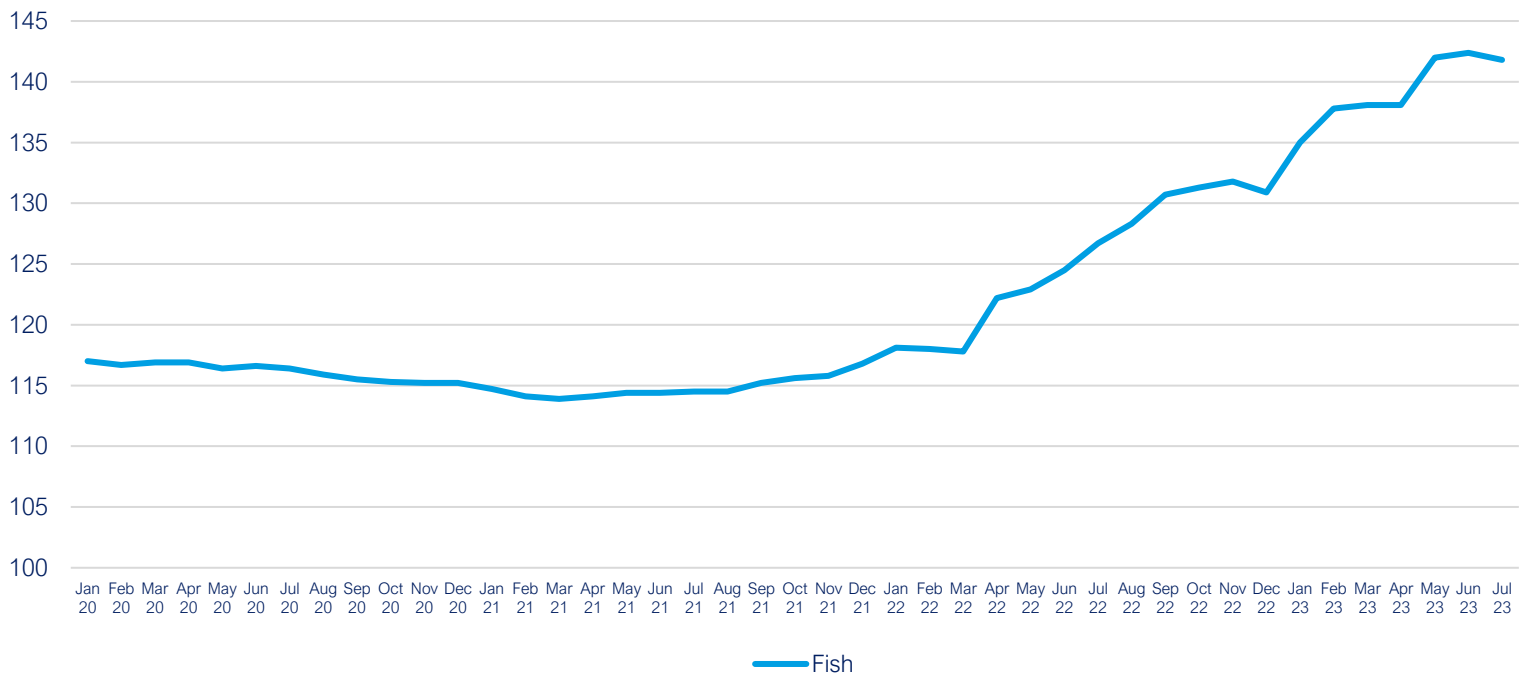
Potatoes, 2020 = 100



**Source: Office for National Statistics**

Note: This data is only available to May 2023

Preserved and processed fish, crustaceans and molluscs for domestic market, 2015 = 100



**Source: Office for National Statistics**

## Sources

Agriculture and Horticulture Development Board (AHDB), UK Wholesale Prices

Department for Environment, Food & Rural Affairs, Agricultural Price Indices

Eurostat, HICP - monthly data (annual rate of change)

Freightos, Global Container Freight Index (FBX)

Office for National Statistics, Consumer Price Inflation & Producer Price Inflation

The World Bank, Commodity Markets, Monthly Prices

Trading Economics, Commodity Prices

Transport Exchange Group, Road Transport Price Index

# About the FDF

The FDF is a powerful voice for the UK's vibrant, resilient and diverse food and drink manufacturing industry. For over 100 years, we have successfully contributed to policy making and legislative development, championing our members' views – large and small – on the critical issues of the day.

We bring together business, government and stakeholders to ensure our manufacturers have the right conditions to grow, invest and employ, while continuing to produce high quality, nutritious and affordable food and drink. With more than 1,000 members – from the most recognisable global brands to the most innovative start-ups – we represent the largest manufacturing sector in the country.

---

Food and Drink Federation  
10 Bloomsbury Way  
London  
WC1A 2SL

Tel: 020 7836 2460  
Email: [generalenquiries@fdf.org.uk](mailto:generalenquiries@fdf.org.uk)  
Web: [fdf.org.uk](http://fdf.org.uk)  
Twitter: [@Foodanddrinkfed](https://twitter.com/Foodanddrinkfed)

**fdf** food & drink  
federation  
passionate about food & drink