

Prices Dashboard

Data up to November 2024

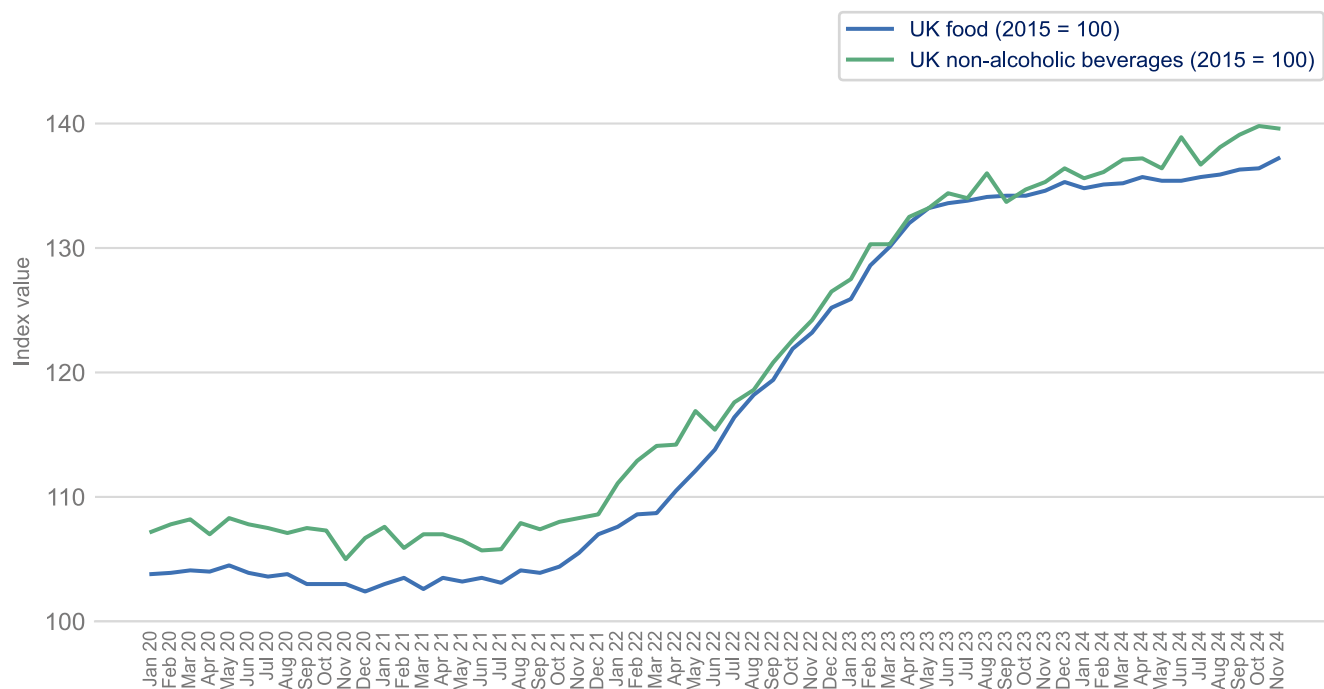


Category		Value	Monthly change, %	Yearly change, %
UK food and non-alcoholic drink inflation (CPIH)				
UK food	Index	137.2	▲ 0.6%	▲ 1.9%
UK non-alcoholic drink	Index	139.6	▼ - 0.1%	▲ 3.2%
UK producer prices (PPI)				
Input prices: domestic food	Index	142.9	▼ - 0.3%	▲ 0.5%
Input prices: imported food	Index	163.7	▲ 0.3%	▼ - 4.9%
Output prices: food for domestic market	Index	135.6	▲ 0.3%	▲ 1.5%
Energy prices and transportation				
Crude oil, brent (\$/bbl)	Price	74.39	▼ - 1.7%	▼ - 10.6%
Natural gas (\$/mmbtu)	Price	13.93	▲ 7.8%	▼ - 3.9%
UK natural gas (£/thm)	Price	118.69	▲ 15.4%	▲ 10.8%
Shipping container rates	Index	3548.5	▲ 0.8%	▲ 201.2%
UK haulage	Index	126.6	▼ - 0.1%	▲ 3.6%
Fertiliser	Index	143.0	▼ - 0.4%	▼ - 10.7%
Packaging				
Paper and paperboard	Index	130.7	— 0.0%	▼ - 1.4%
Wooden containers	Index	151.6	▲ 0.5%	▲ 4.8%
Aluminium (\$/mt)	Price	2,582.19	▼ - 0.5%	▲ 17.3%
Agricultural raw materials				
Sunflower oil (\$/mt)	Price	1,265.34	▲ 4.9%	▲ 34.1%
Rapeseed oil (\$/mt)	Price	1,234.26	▲ 8.1%	▲ 18.8%
Palm oil (\$/mt)	Price	1,168.59	▲ 8.5%	▲ 40.7%
Wheat, US HRW (\$/mt)	Price	253.75	▼ - 7.0%	▼ - 10.5%
Maize (\$/mt)	Price	201.33	▲ 5.8%	▼ - 4.7%
Rice (\$/mt)	Price	511.00	▼ - 0.8%	▼ - 14.5%
Soybeans (\$/mt)	Price	435.64	▼ - 1.5%	▼ - 21.2%
Feed wheat (UK)	Index	110.4	— 0.0%	▼ - 3.4%
Sugar (\$/kg)	Price	0.45	▼ - 2.4%	▼ - 21.7%
Cheese (£/tonne)	Price	4,190	▼ - 2.6%	▲ 23.2%
Butter (£/tonne)	Price	6,630	▲ 2.0%	▲ 44.8%
Skimmed milk powder (£/tonne)	Price	2,100	▲ 0.5%	▼ - 7.9%
Cocoa (\$/tonne)	Price	7,930.13	▲ 20.5%	▲ 93.6%
Beef (UK)	Index	145.6	▲ 0.6%	▲ 8.5%
Chicken (UK)	Index	103.5	▲ 1.4%	▼ - 14.7%
Pork (UK)	Index	130.0	▼ - 0.3%	▼ - 6.3%
Potatoes (UK)	Index	196.1	▼ - 14.4%	▲ 2.1%
Fish (UK)	Index	145.5	▲ 0.3%	▲ 3.0%

UK food and non-alcoholic drink inflation (CPIH)

[Back to Title Page](#)

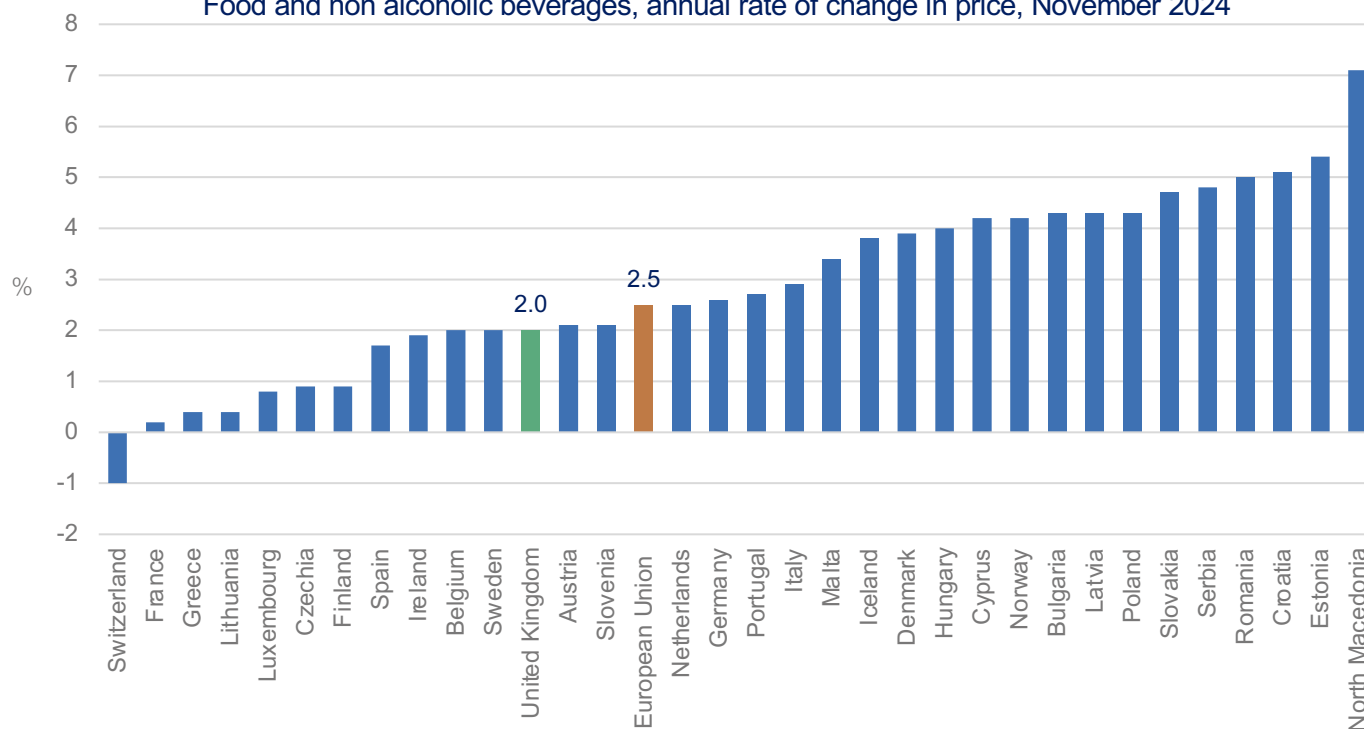
UK food and UK non-alcoholic beverages



Source: Office for National Statistics

Food and drink inflation comparison with Europe

Food and non alcoholic beverages, annual rate of change in price, November 2024

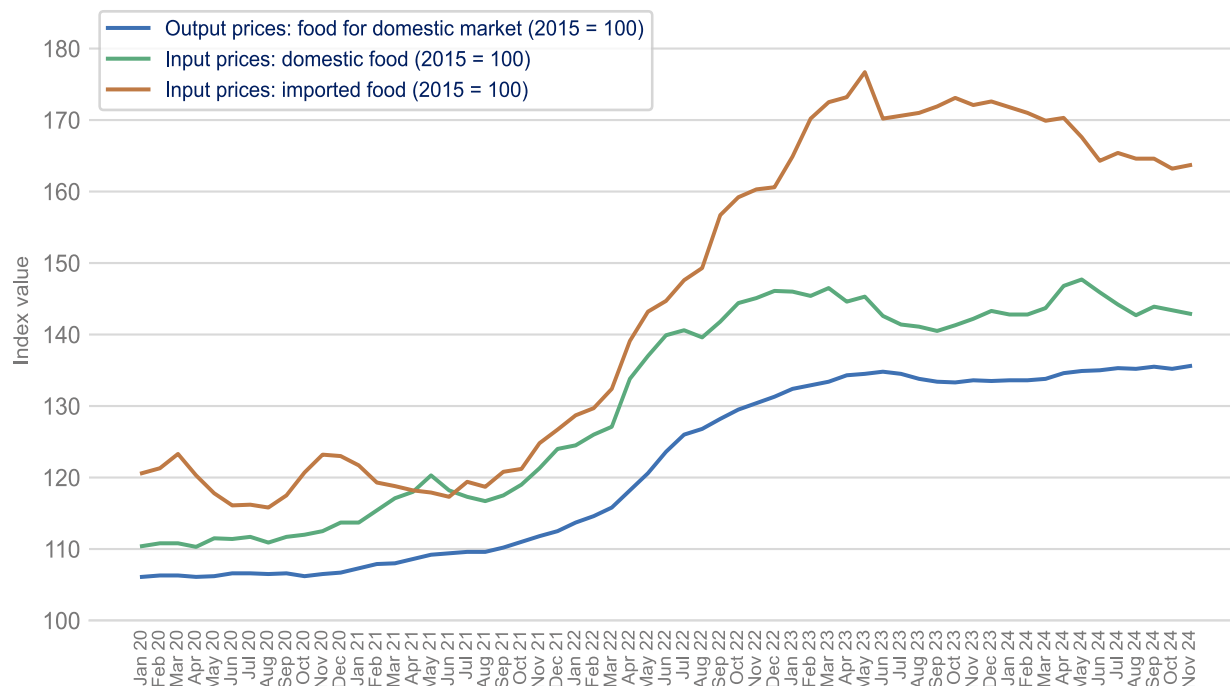


Source: Eurostat

UK producer prices (PPI)

[Back to Title Page](#)

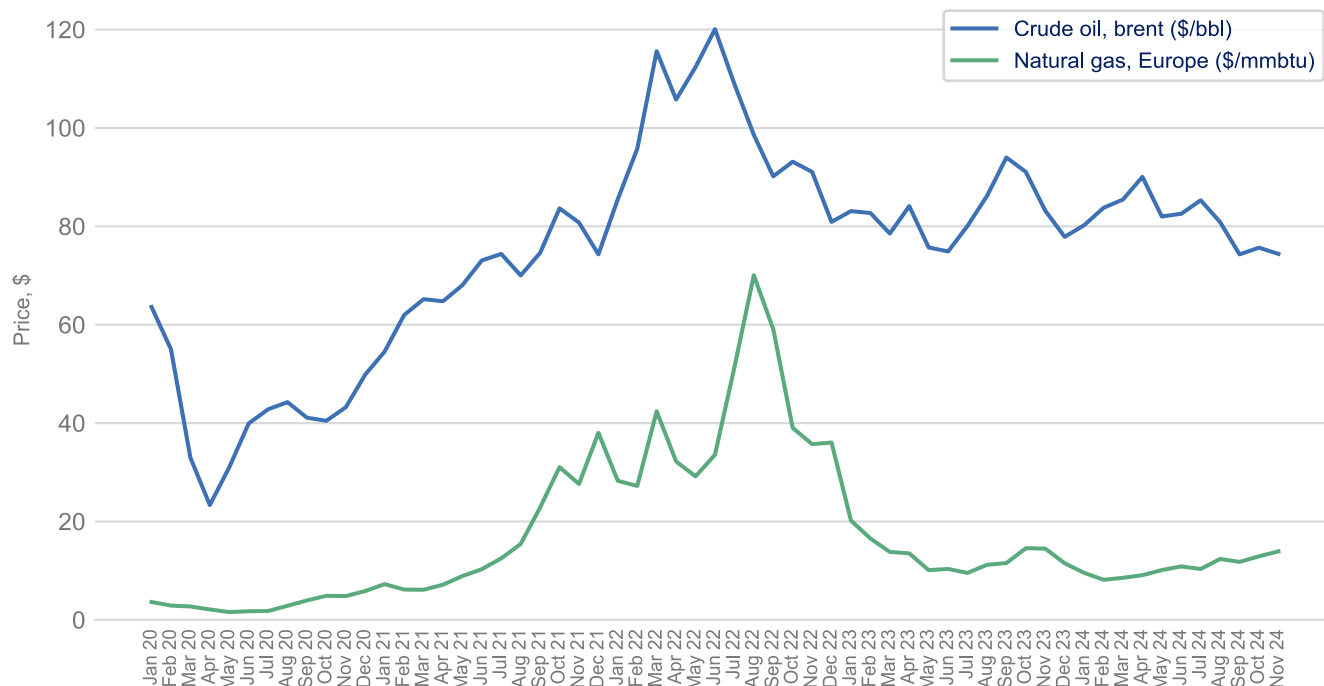
Input prices (domestic food), input prices (imported food), output prices (food for domestic market)



Source: Office for National Statistics

Energy prices and transportation

Crude oil and natural gas



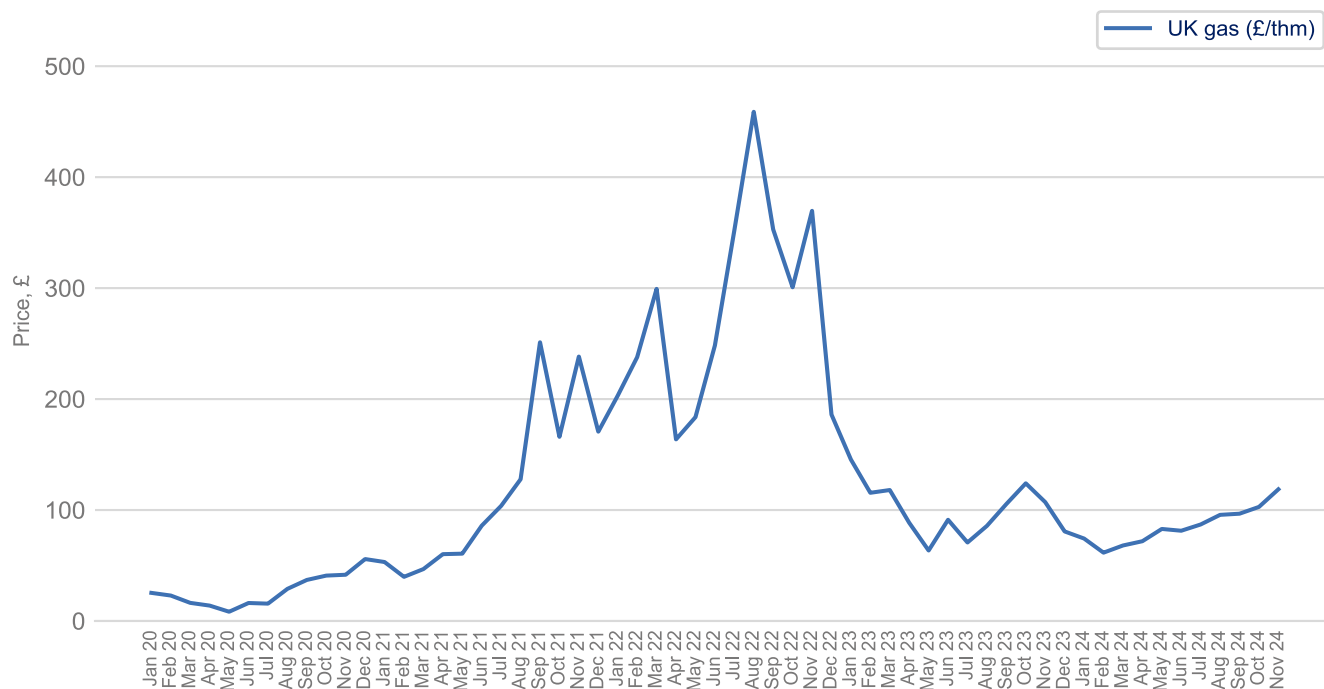
Source: World Bank Commodity Price Data

Prices Dashboard

Data up to November 2024

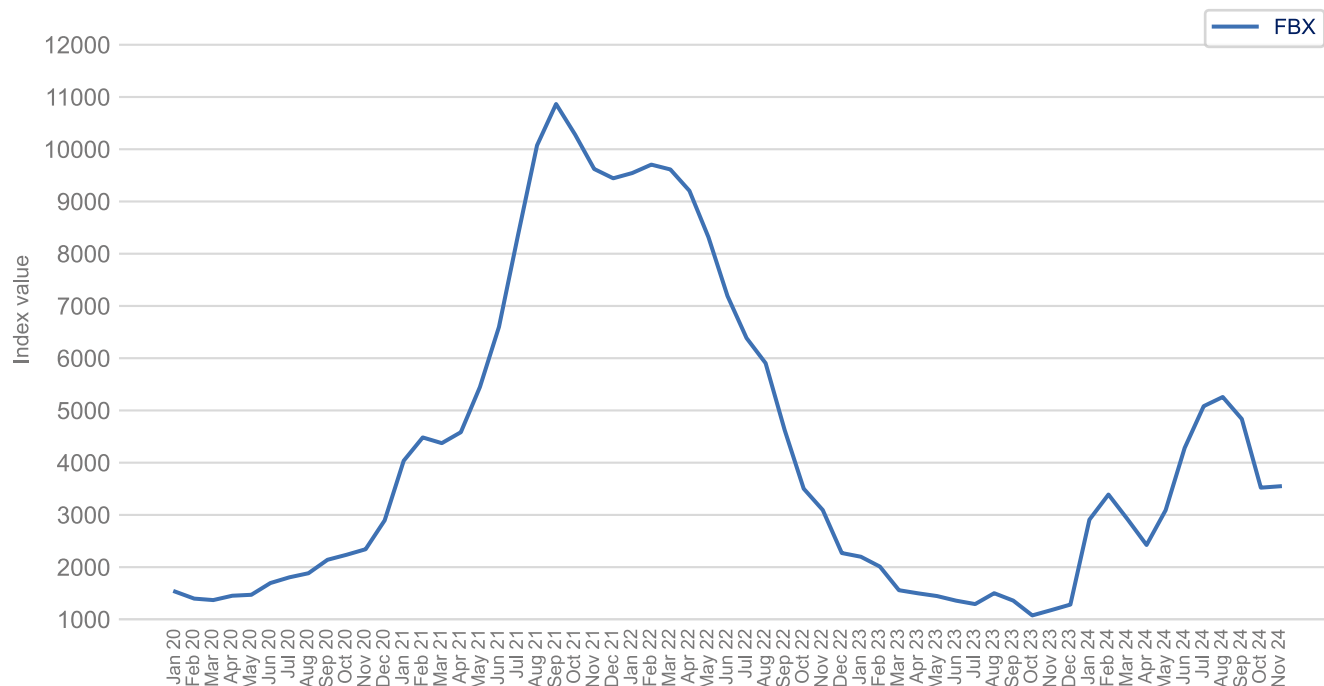
[Back to Title Page](#)

UK natural gas



Source: Trading Economics

Freightos Baltic Index (FBX): Global Container Freight Index



Source: Freightos, Global Container Index

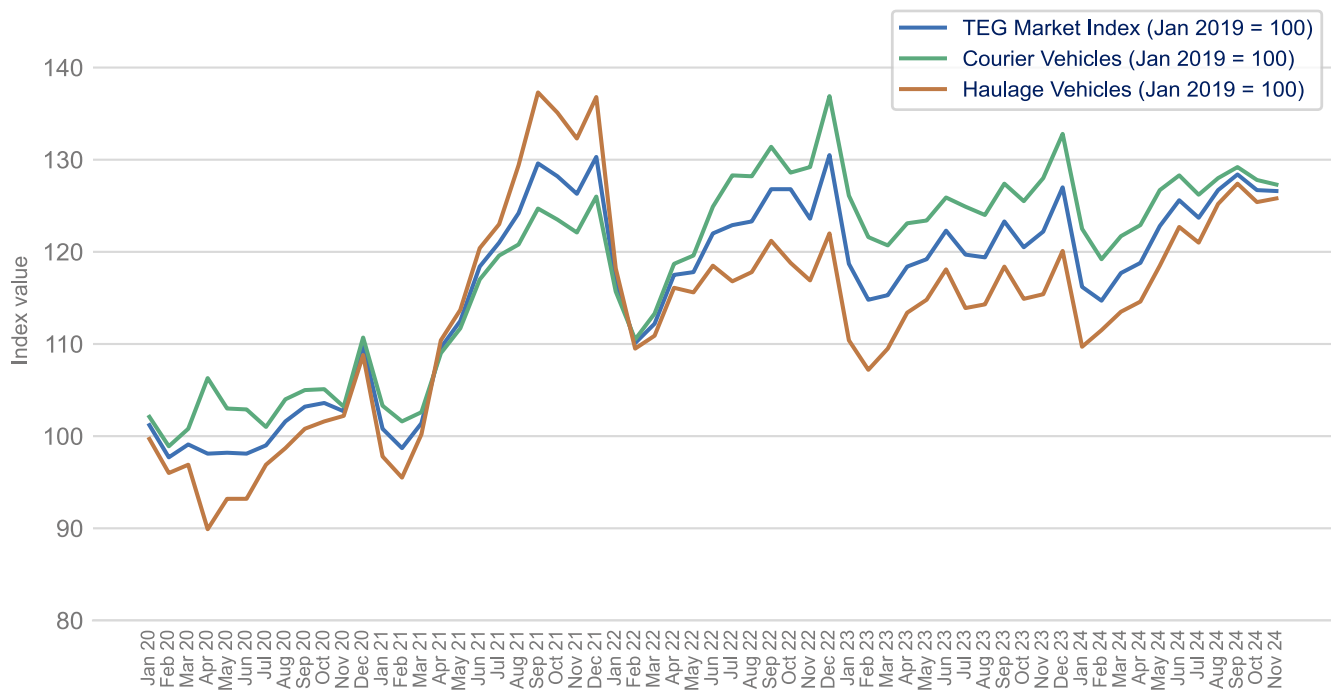
Note: Each monthly index value is an average of the weekly index values of that month

Prices Dashboard

Data up to November 2024

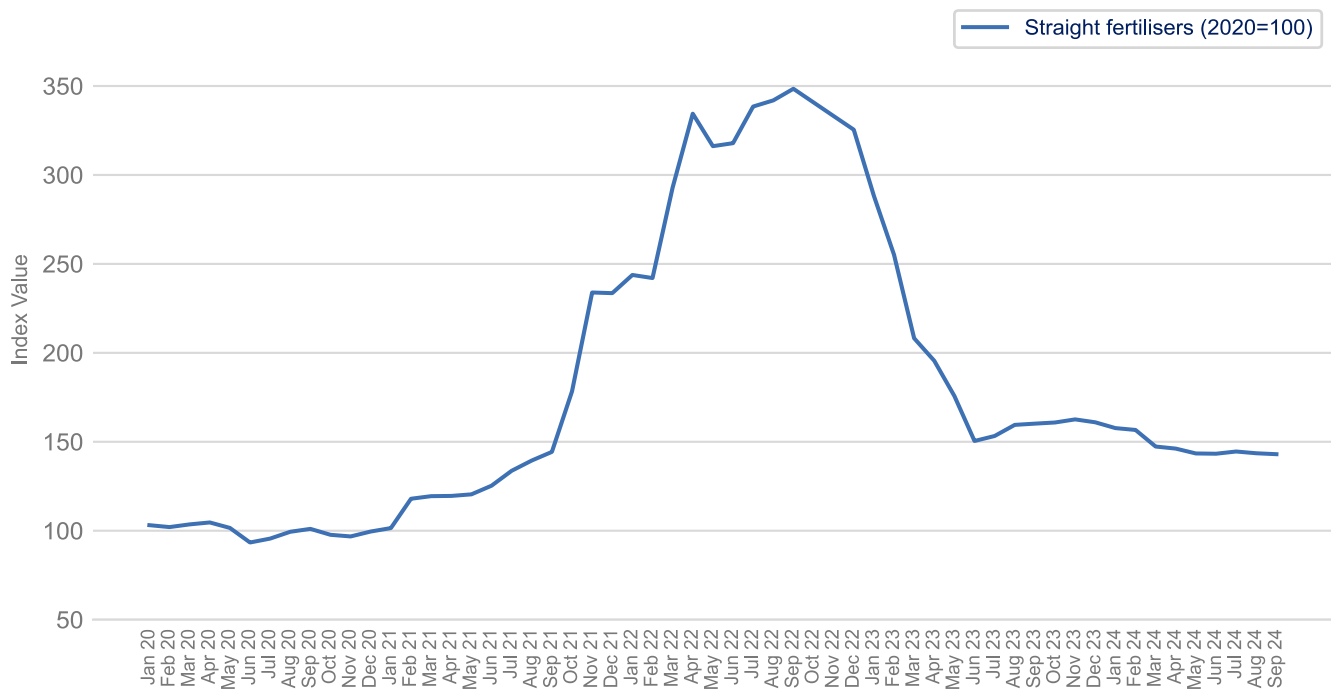
[Back to Title Page](#)

UK Haulage



Source: Transport Exchange Group

Straight fertilisers



Source: Department for Environment, Food & Rural Affairs

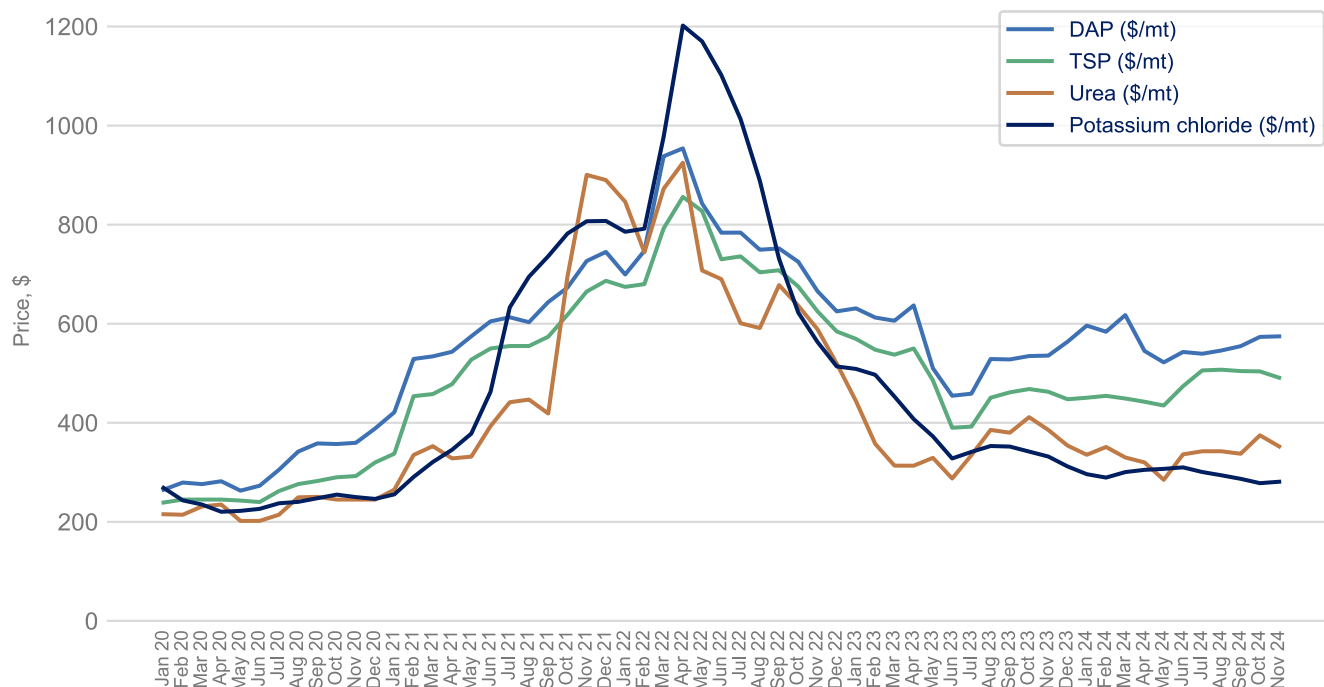
Note: This data is only available to September 2024.

Prices Dashboard

Data up to November 2024

[Back to Title Page](#)

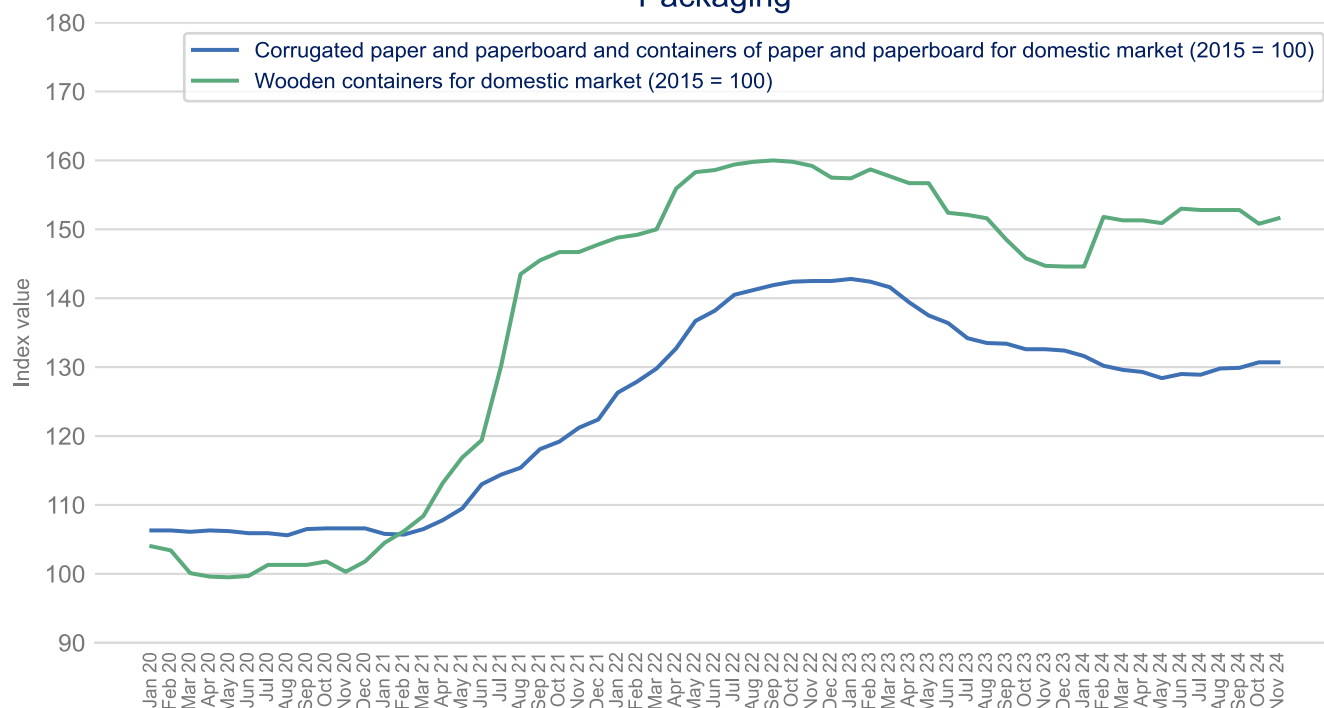
DAP, TSP, Urea and Potassium Chloride



Source: World Bank Commodity Price Data

Packaging

Packaging

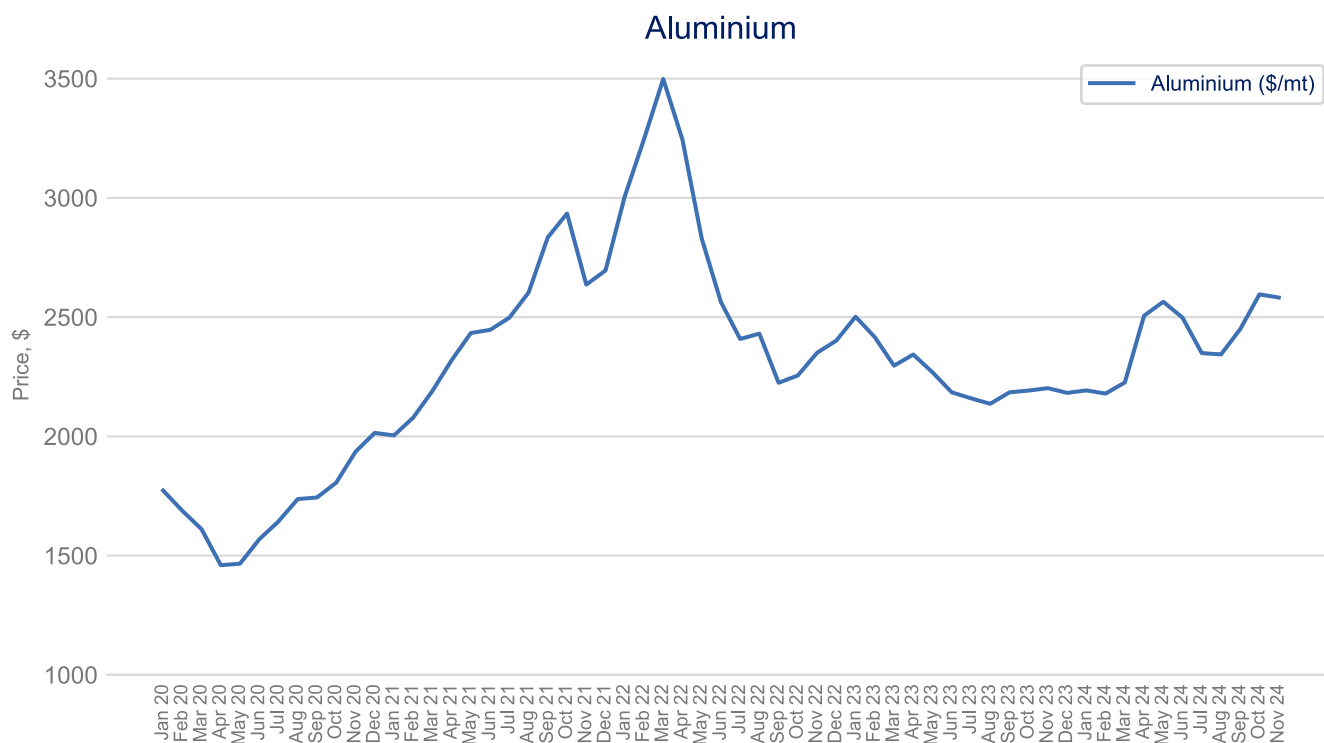


Source: Office for National Statistics

Prices Dashboard

Data up to November 2024

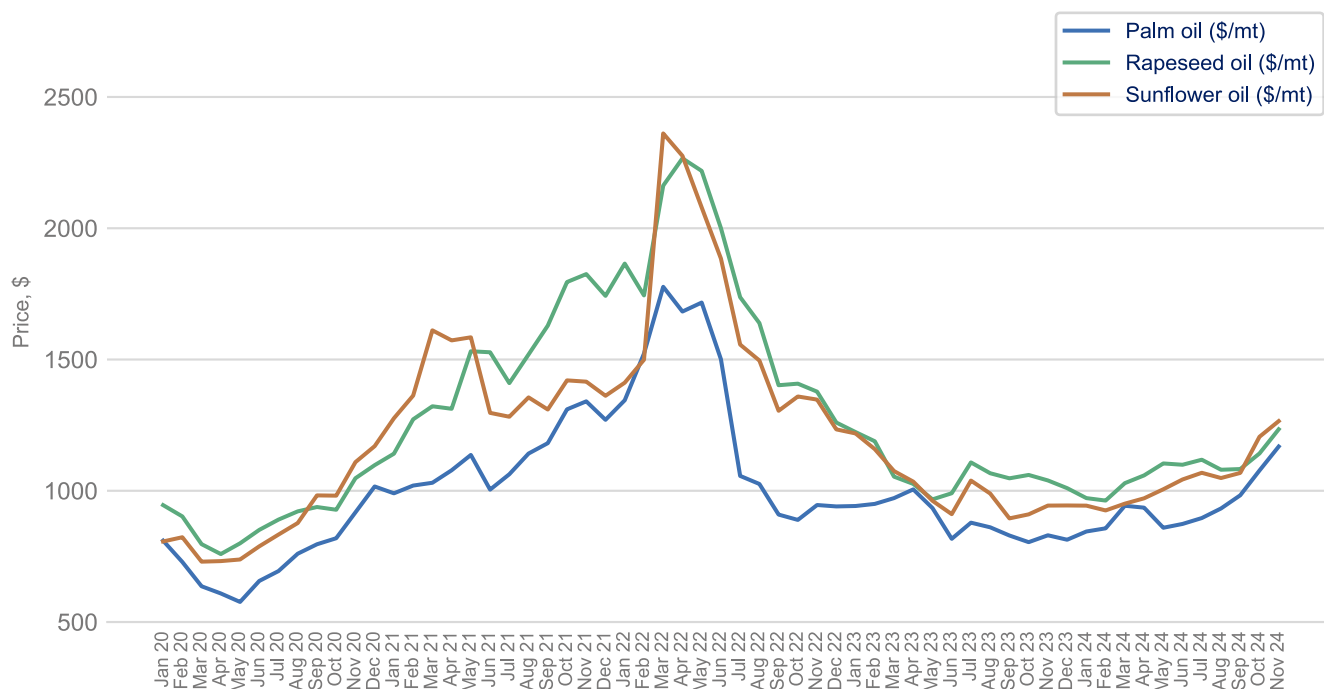
[Back to Title Page](#)



Source: World Bank Commodity Price Data

Agricultural raw materials

Palm oil, rapeseed oil and sunflower oil



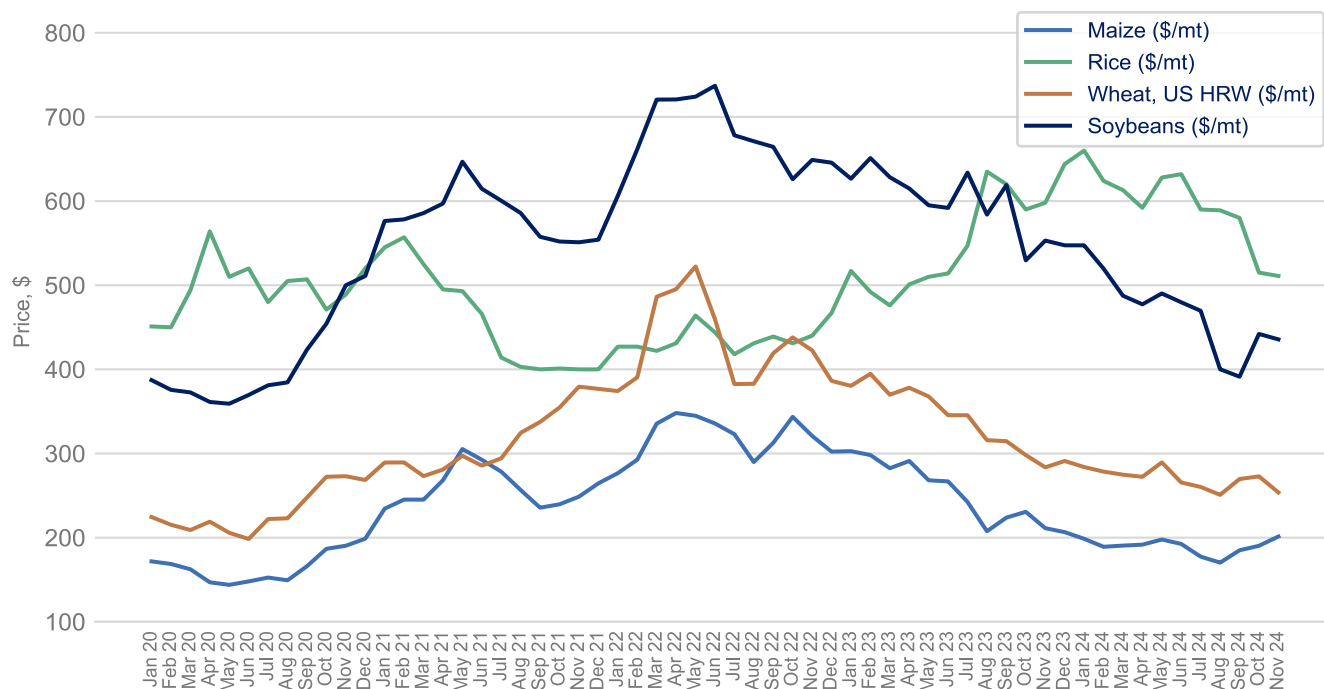
Source: World Bank Commodity Price Data

Prices Dashboard

Data up to November 2024

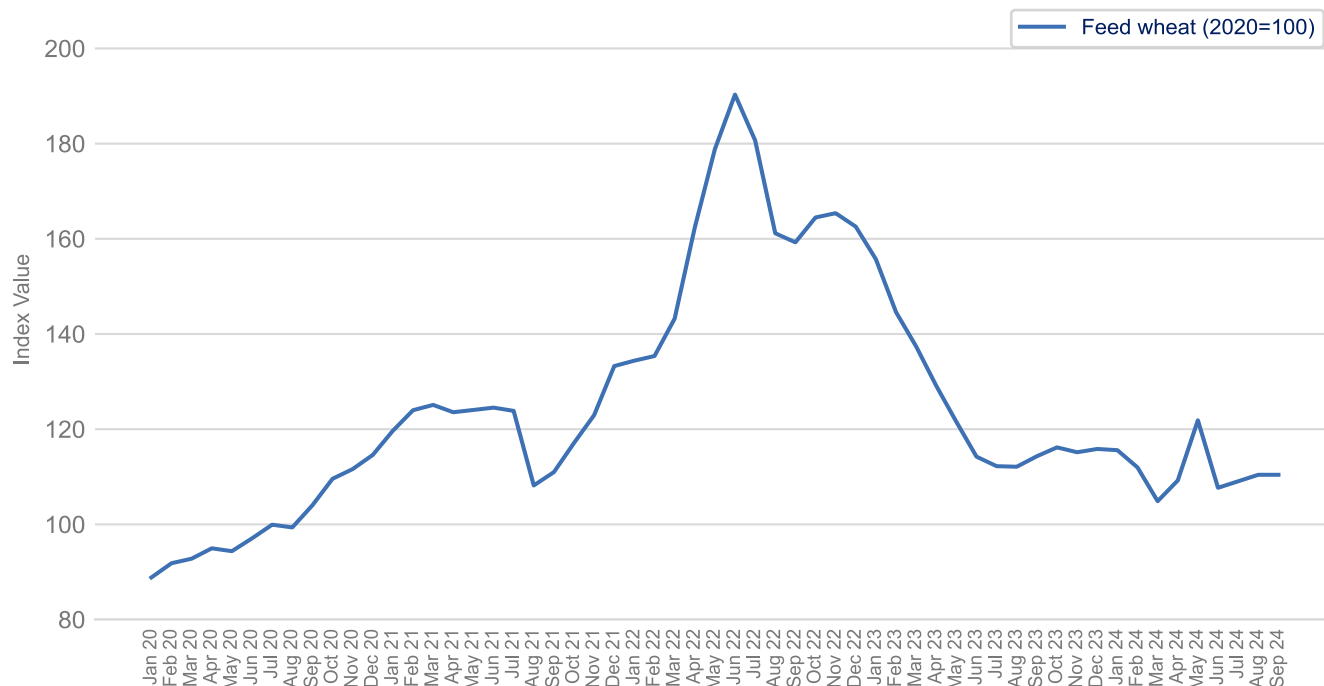
[Back to Title Page](#)

Maize, rice, wheat and soybeans



Source: World Bank Commodity Price Data

Feed wheat



Source: Department for Environment, Food & Rural Affairs

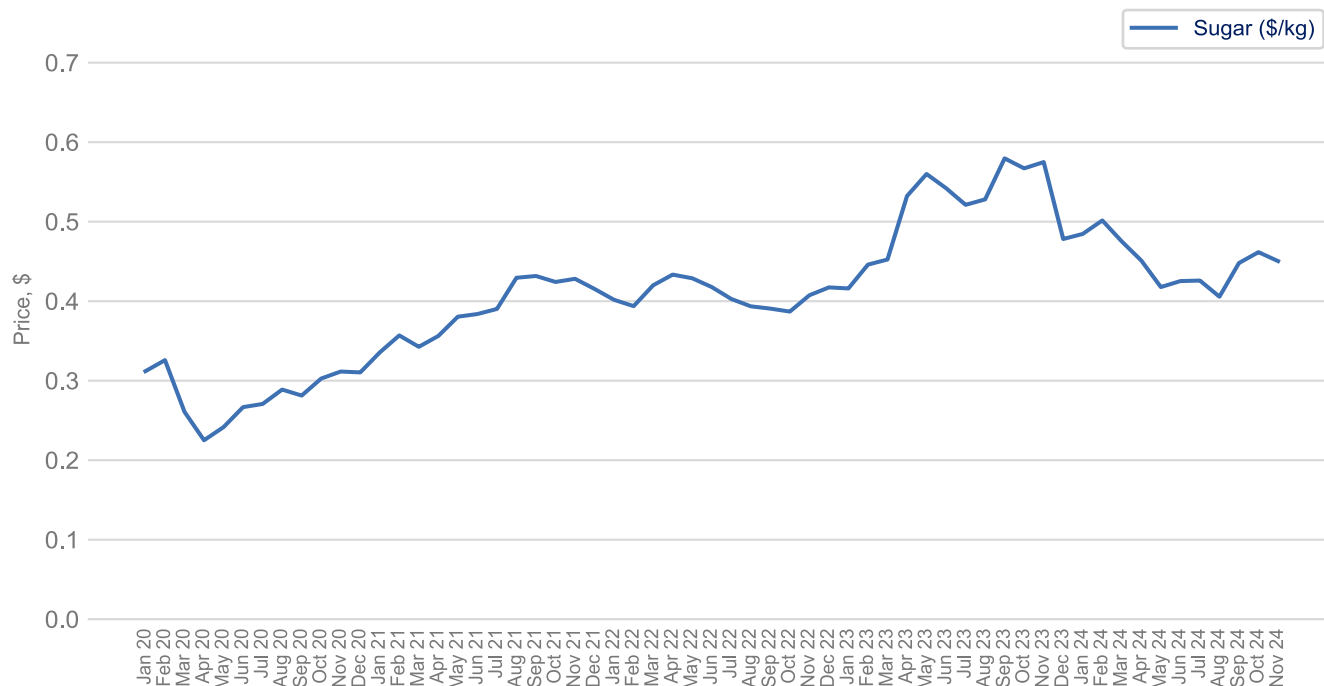
Note: This data is only available to September 2024

Prices Dashboard

Data up to November 2024

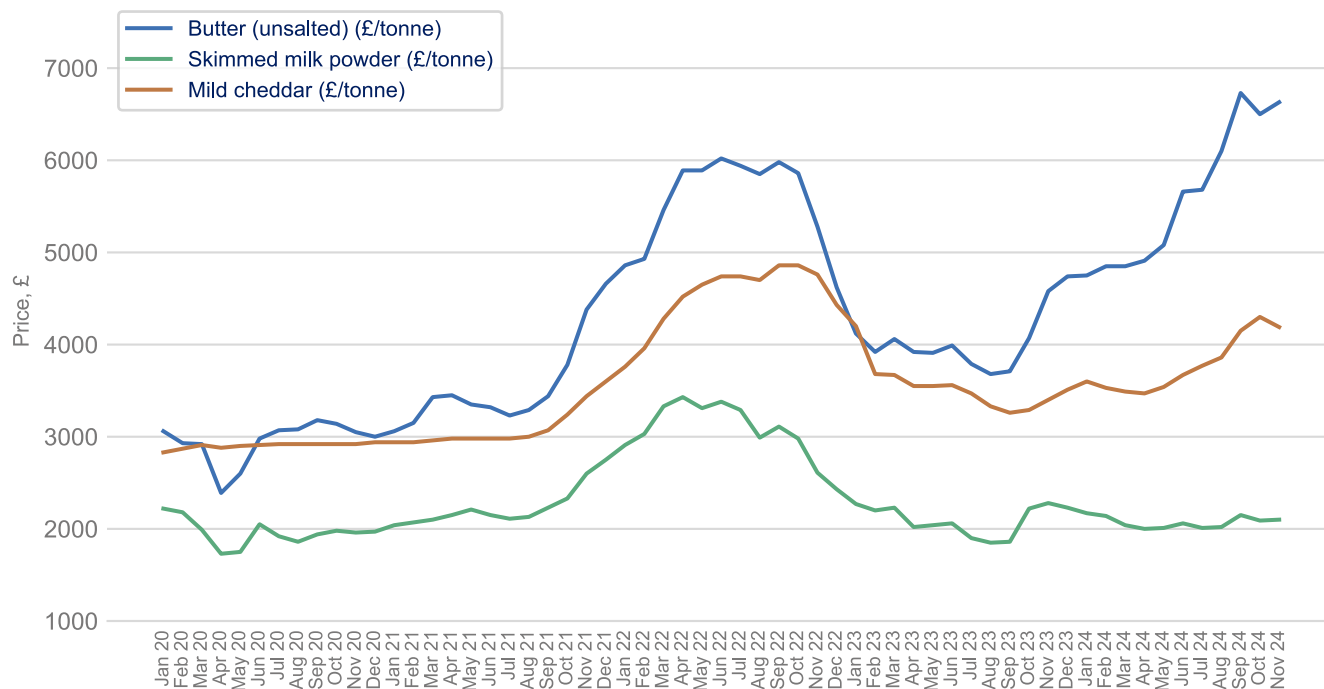
[Back to Title Page](#)

Sugar



Source: World Bank Commodity Price Data

Butter, mild cheddar and skimmed milk powder



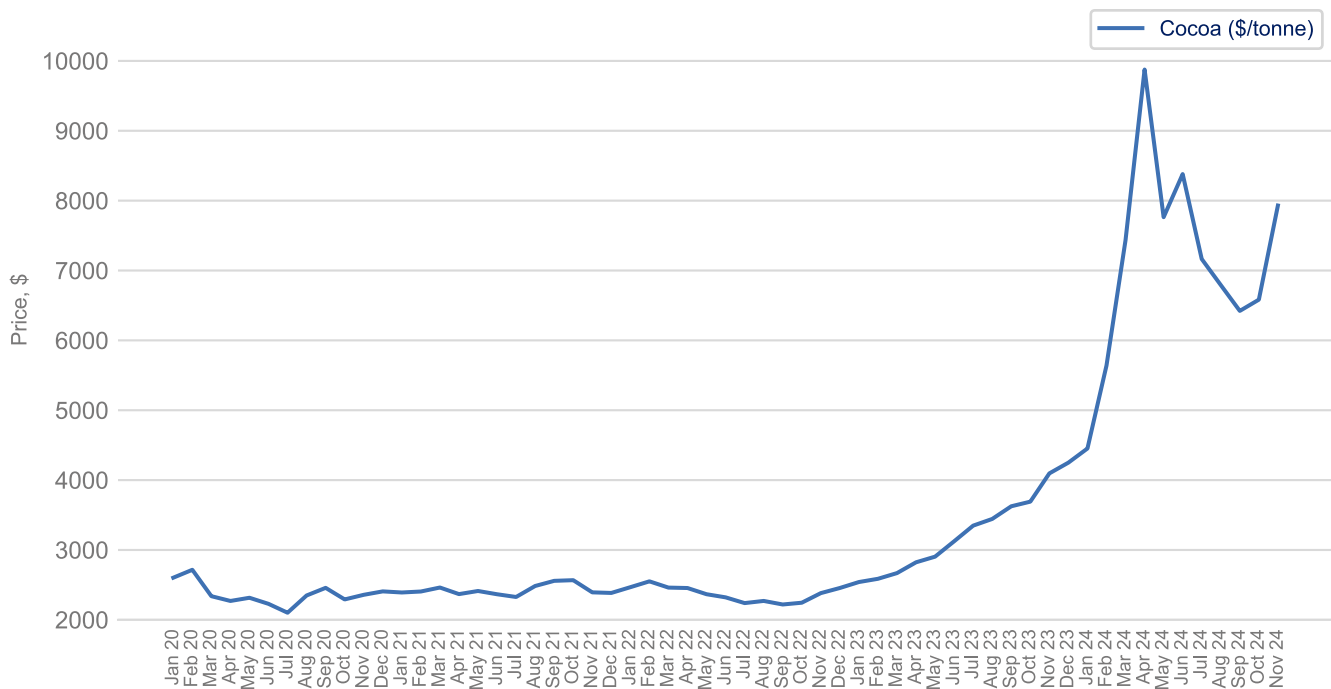
Source: Agriculture and Horticulture Development Board (AHDB)

Prices Dashboard

Data up to November 2024

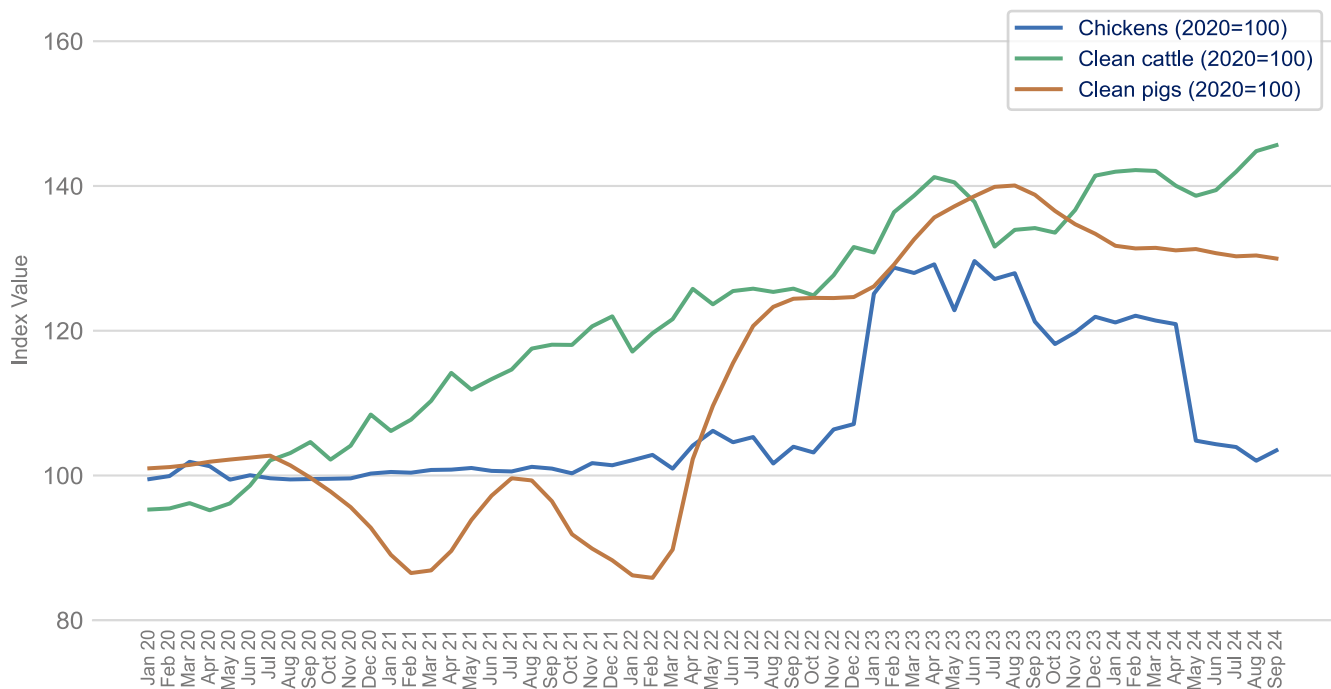
[Back to Title Page](#)

Cocoa



Source: International Cocoa Organization

Chicken, beef and pork



Source: Department for Environment, Food & Rural Affairs

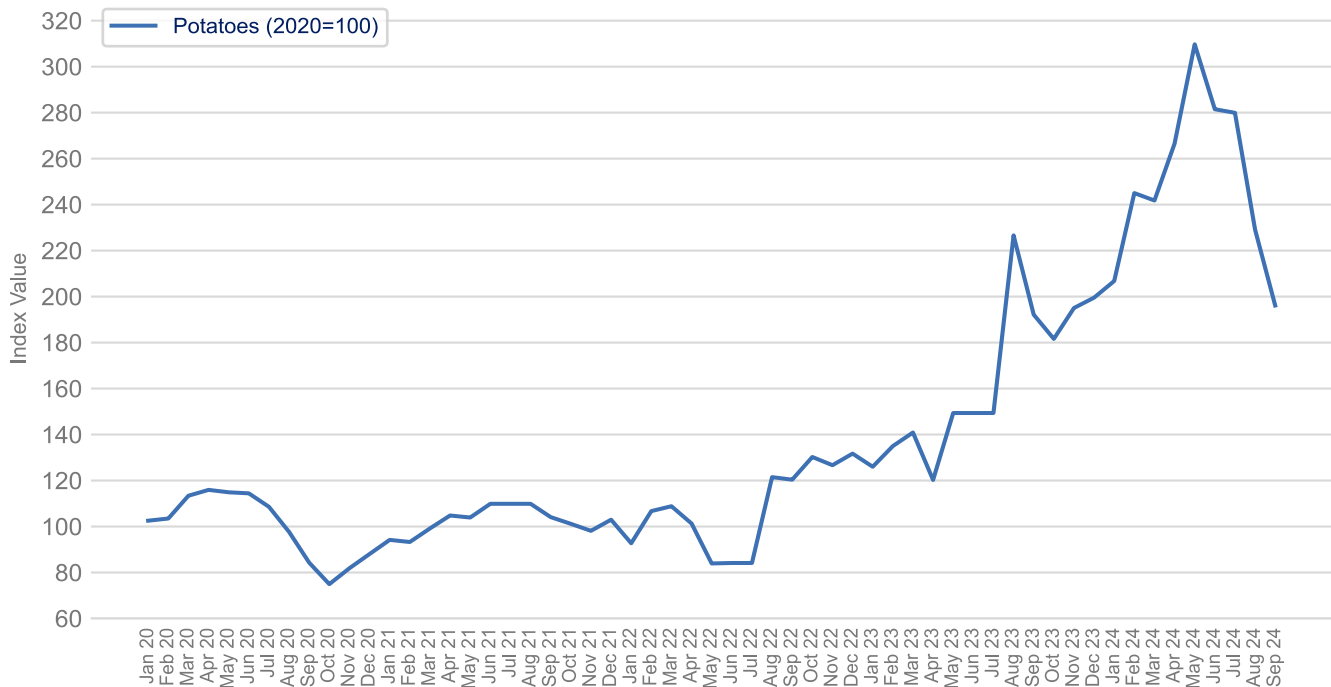
Note: This data is only available to September 2024

Prices Dashboard

Data up to November 2024

[Back to Title Page](#)

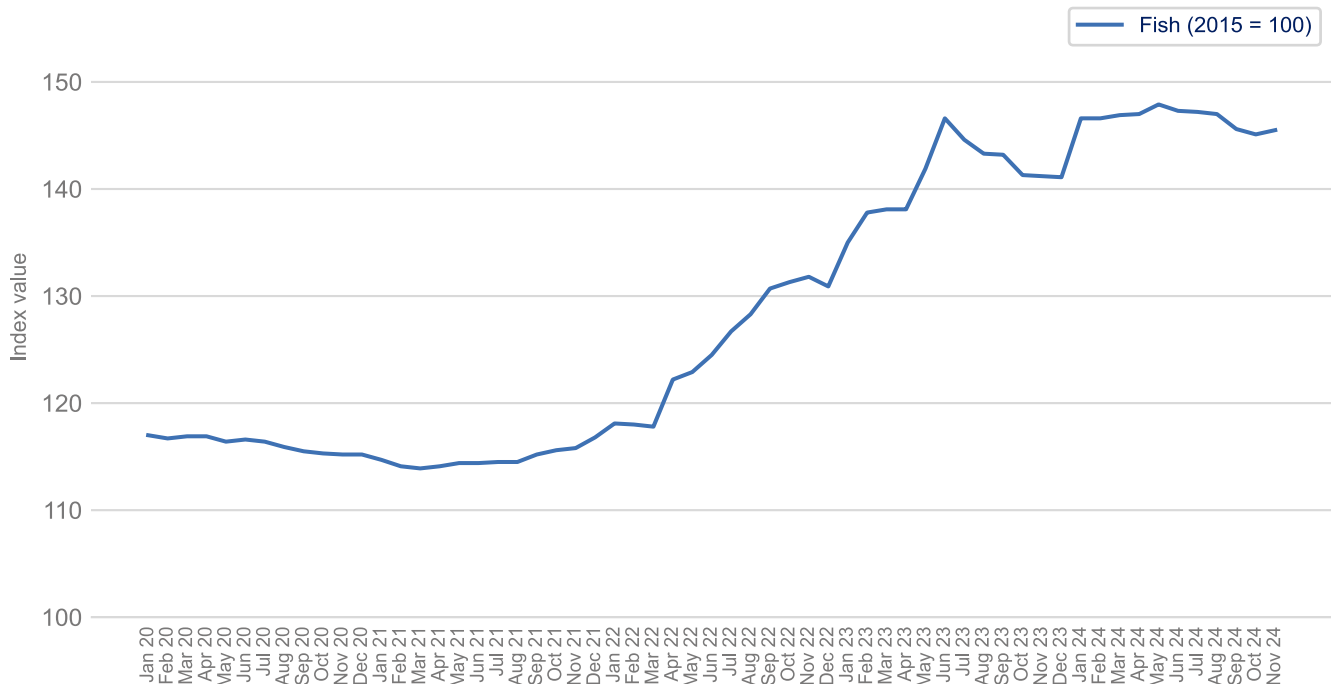
Potatoes



Source: Department for Environment, Food & Rural Affairs

Note: This data is only available to September 2024

Preserved and processed fish, crustaceans and molluscs for domestic market



Source: Office for National Statistics

Sources

Agriculture and Horticulture Development Board (AHDB), UK Wholesale Prices

Department for Environment, Food & Rural Affairs, Agricultural Price Indices

Eurostat, HICP - monthly data (annual rate of change)

Freightos, Global Container Freight Index (FBX)

International Cocoa Organization

Office for National Statistics, Consumer Price Inflation & Producer Price Inflation

The World Bank, Commodity Markets, Monthly Prices

Trading Economics, Commodity Prices

Transport Exchange Group, Road Transport Price Index



The Food and Drink Federation (FDF) is the voice of the food and drink manufacturing industry – the UK's largest manufacturing sector. We contribute over £30 billion to the country's economy, supporting half a million jobs in every region and nation, and producing products that are loved in the UK and around the world. [Food and drink powers our nation.](#)

Find out more about our latest news and the work we do at:

[FDF.org.uk](https://www.fdf.org.uk)

X: [@FoodanddrinkFed](#)

[Linkedin](#)