

Prices Dashboard

May 2025

fdf



Prices summary

Dashboard prepared by
Uros Milosevic
FDF Senior Economic Analyst

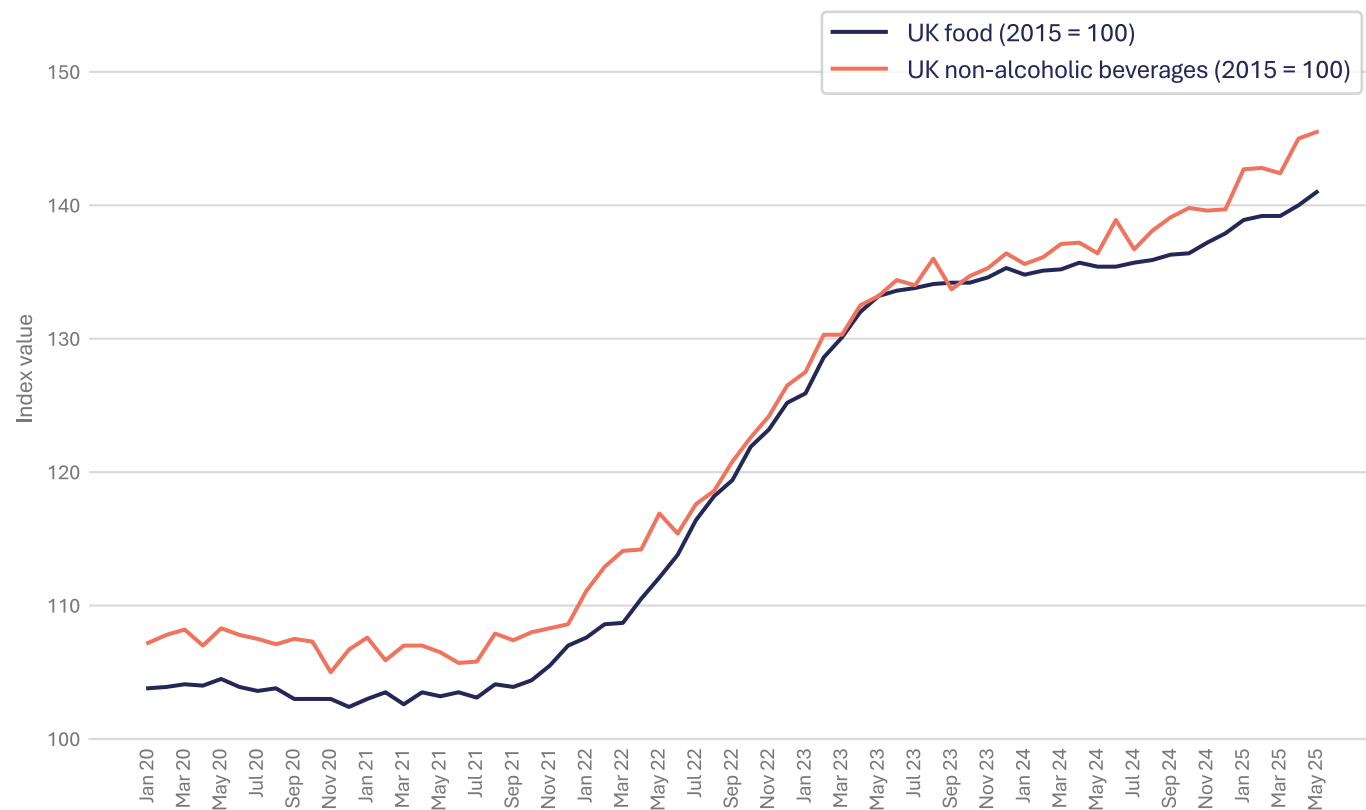


Category		Value	Monthly change	Yearly change
UK food and non-alcoholic drink inflation (CPIH)				
UK food	Index	141.0	▲ 0.7%	▲ 4.1%
UK non-alcoholic drink	Index	145.5	▲ 0.3%	▲ 6.7%
UK producer prices (PPI) – Dataset has been paused by the ONS				
Input prices: domestic food	Index	n/a	n/a	n/a
Input prices: imported food	Index	n/a	n/a	n/a
Output prices: food for domestic market	Index	n/a	n/a	n/a
Energy prices and transportation				
Crude oil, Brent (\$/bbl)	Price	64.21	▼ - 5.2%	▼ - 21.7%
Natural gas (\$/mmbtu)	Price	11.66	▲ 0.6%	▲ 15.2%
Monthly system average price of gas (p/kWh)	Price	2.84	▼ - 2.5%	▲ 7.8%
Shipping container rates	Index	2,123.8	▲ 3.8%	▼ - 31.3%
UK haulage	Index	128.2	▲ 3.6%	▲ 4.4%
Fertiliser	Index	164.9	▲ 1.7%	▲ 11.9%
Packaging				
Paper and paperboard	Index	n/a	n/a	n/a
Wooden containers	Index	n/a	n/a	n/a
Aluminium (\$/mt)	Price	2,448.79	▲ 3.3%	▼ - 4.5%

Category		Value	Monthly change	Yearly change
Agricultural raw materials				
Sunflower oil (\$/mt)	Price	1,211.25	▼ - 1.1%	▲ 20.4%
Rapeseed oil (\$/mt)	Price	1,241.91	▼ - 1.2%	▲ 12.5%
Palm oil (\$/mt)	Price	907.58	▼ - 8.7%	▲ 5.6%
Wheat, US HRW (\$/mt)	Price	237.00	▼ - 5.0%	▼ - 18.1%
Maize (\$/mt)	Price	203.87	▼ - 5.2%	▲ 3.1%
Rice (\$/mt)	Price	431.00	▲ 3.9%	▼ - 31.4%
Soybeans (\$/mt)	Price	414.35	▲ 1.7%	▼ - 15.5%
Feed wheat (UK)	Index	107.4	▼ - 4.6%	▲ 5.7%
Sugar (\$/kg)	Price	0.39	▼ - 2.7%	▼ - 6.6%
Cheese (£/tonne)	Price	3,950	▼ - 1.7%	▲ 11.6%
Butter (£/tonne)	Price	6,060	▲ 0.2%	▲ 19.3%
Skimmed milk powder (£/tonne)	Price	1,970	▼ - 0.5%	▼ - 2.0%
Beef (UK)	Index	197.5	▲ 7.2%	▲ 39.0%
Chicken (UK)	Index	103.5	▲ 0.9%	▼ - 14.7%
Pork (UK)	Index	127.0	▲ 0.5%	▼ - 3.4%
Lamb (UK)	Index	154.3	▲ 0.1%	▼ - 3.4%
Cocoa (\$/tonne)	Price	8,989.84	▲ 10.0%	▲ 15.8%
Coffee, Arabica (\$/kg)	Price	8.77	▲ 1.6%	▲ 72.5%
Potatoes (UK)	Index	163.8	▼ - 3.1%	▼ - 32.2%
Fish (UK)	Index	n/a	n/a	n/a

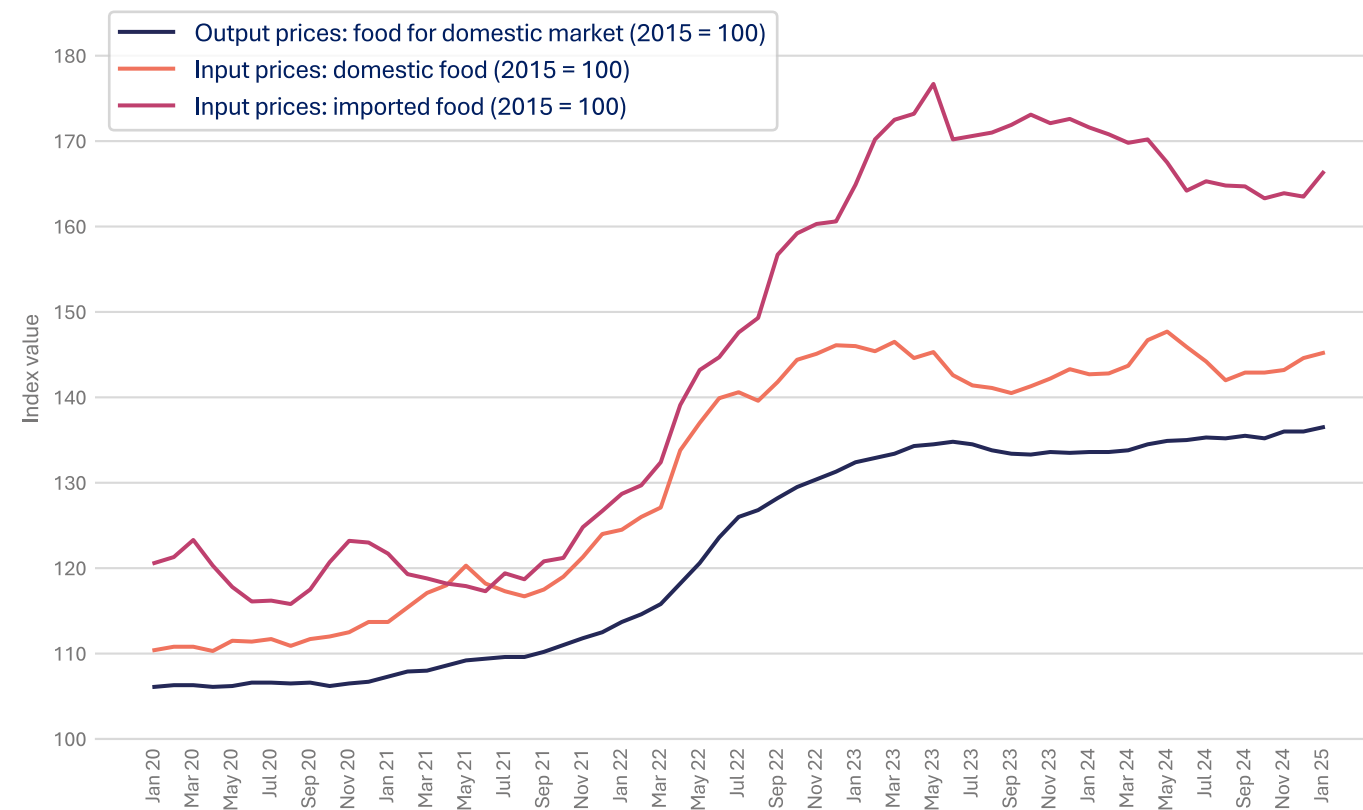
This page is interactive. Select a category to view its graph.

UK food and non-alcoholic drink inflation (CPIH)



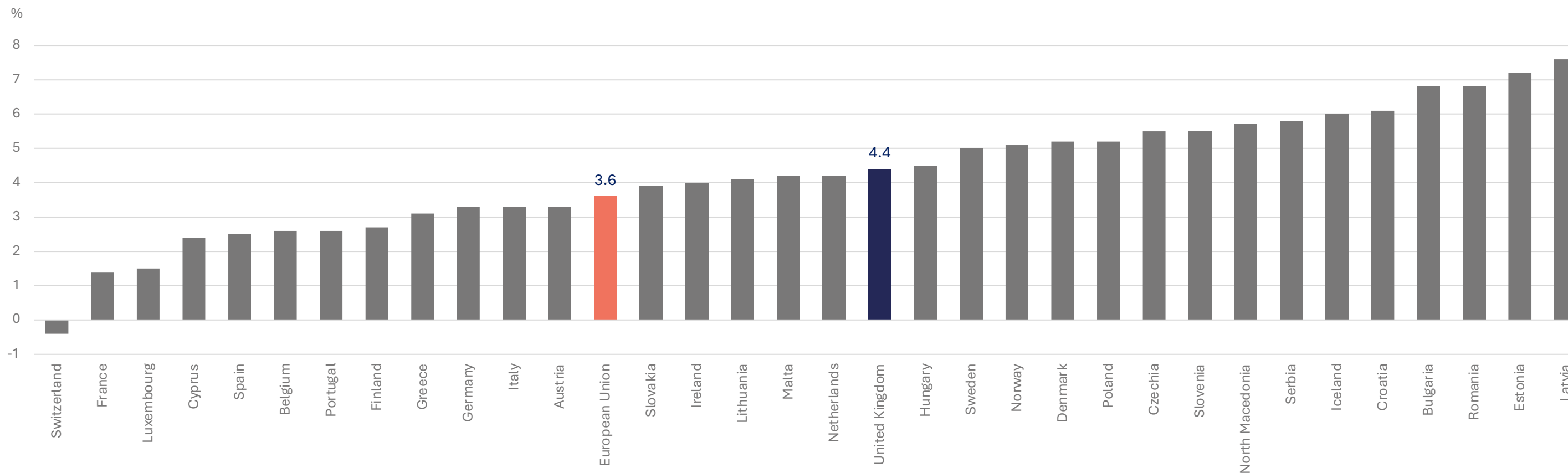
Source: Office for National Statistics

UK producer prices (PPI)



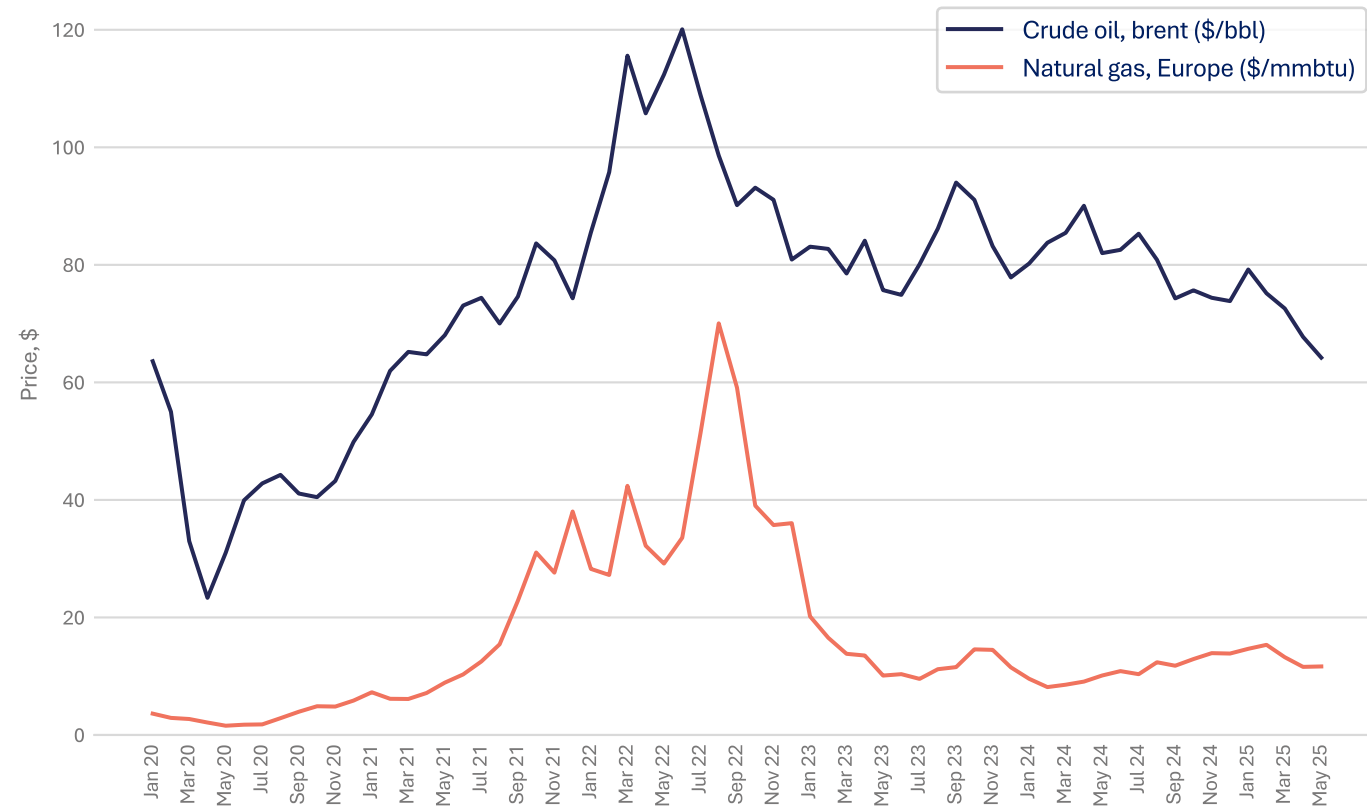
Source: Office for National Statistics – note: [the release of PPI data is being paused by the Office for National Statistics](#)

Food and non-alcoholic drink inflation comparison with Europe (annual rate of change, May 2025)



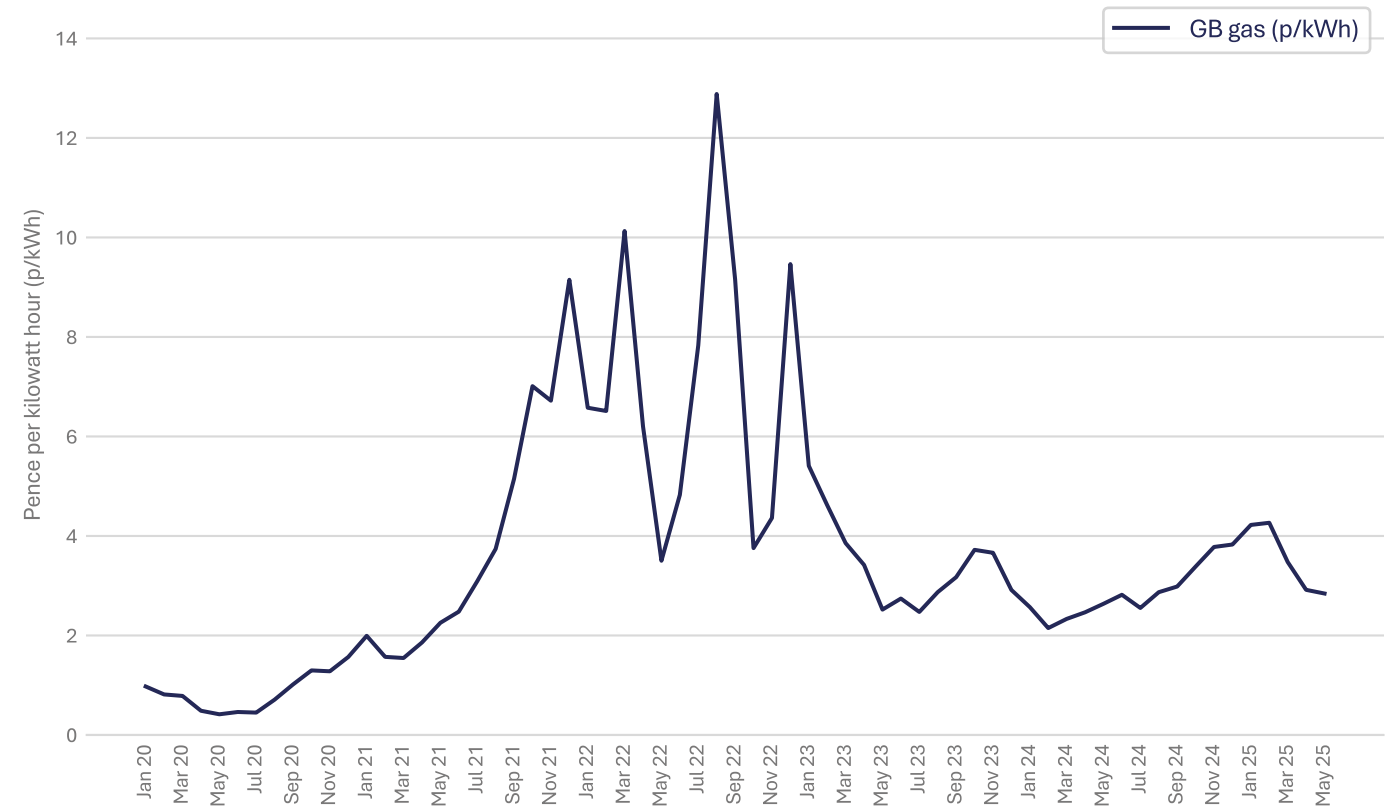
Source: Eurostat

Crude oil and natural gas



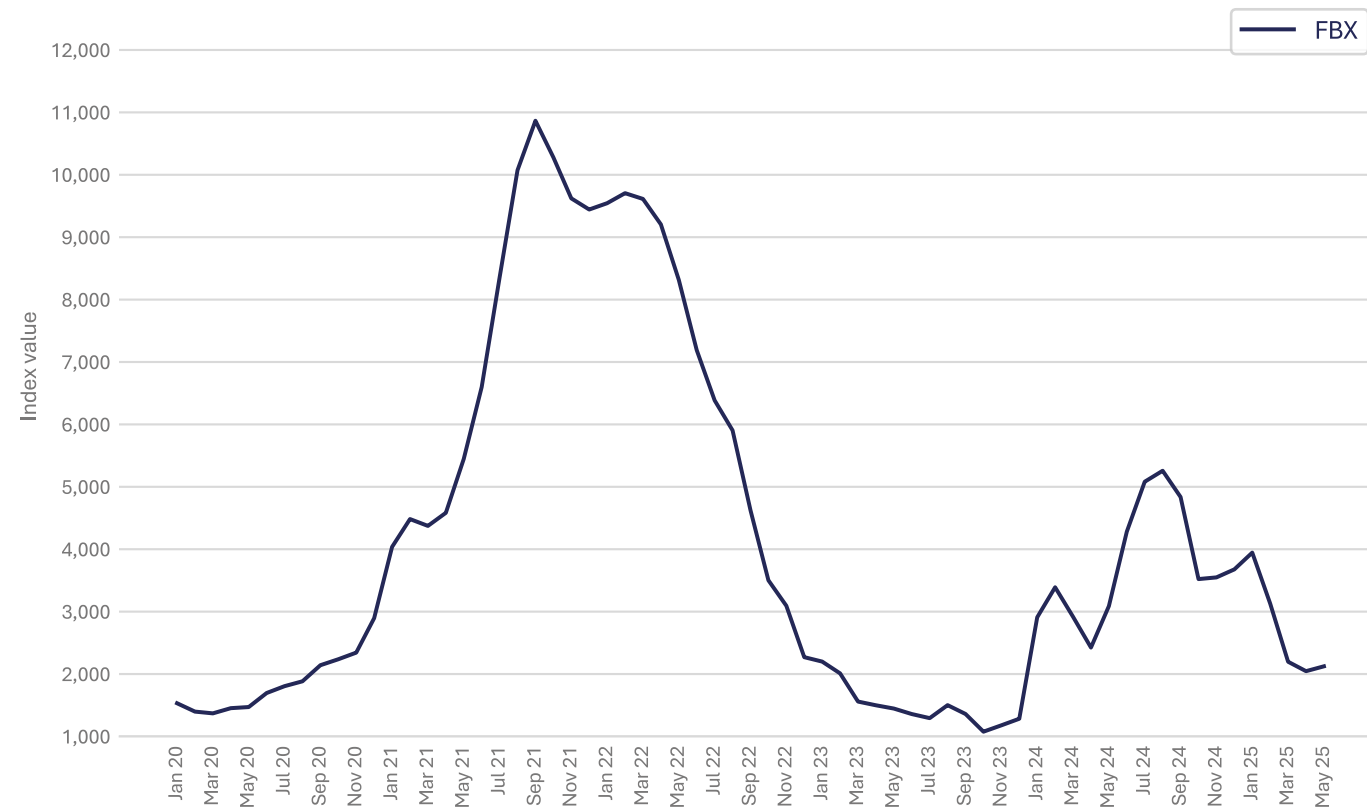
Source: World Bank Commodity Price Data

Monthly system average price (SAP) of gas



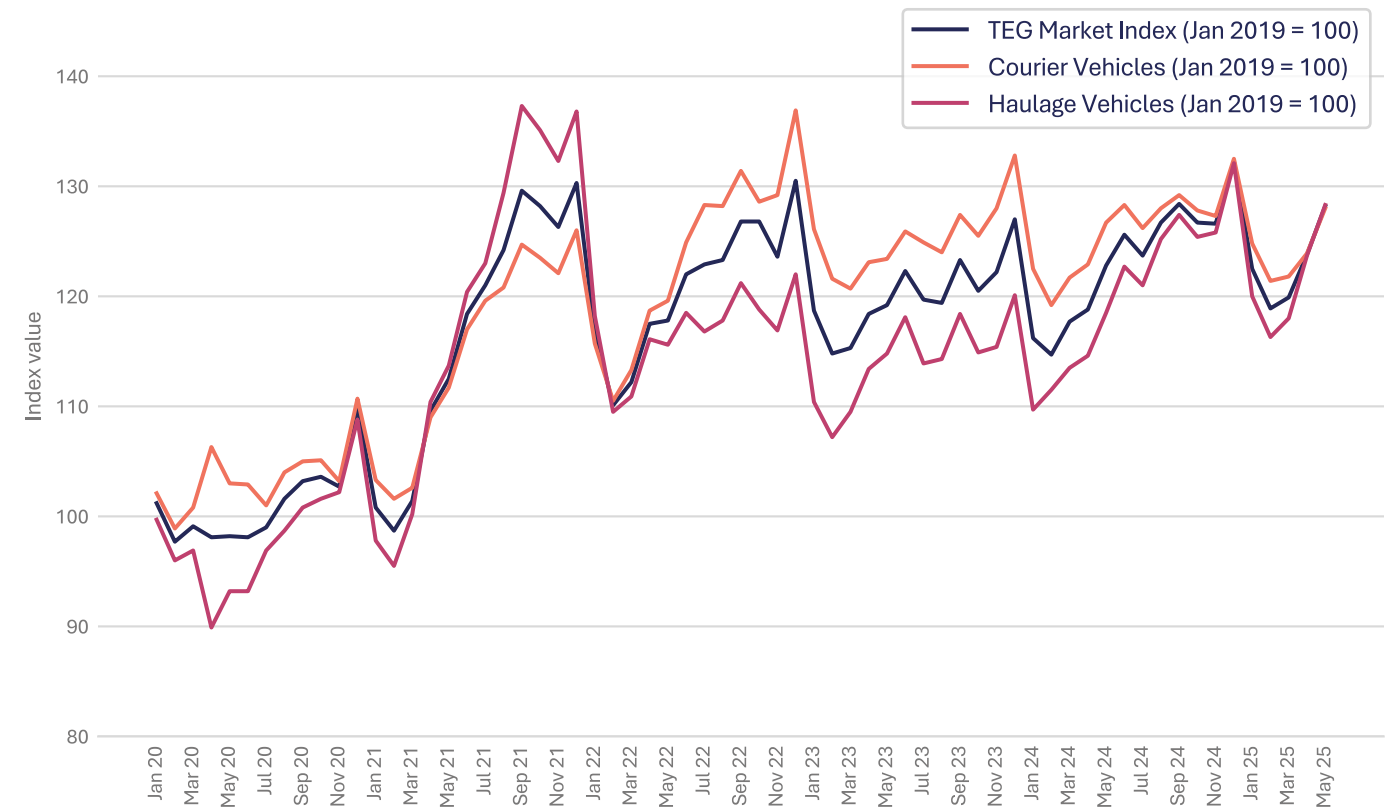
Source: Office for National Statistics

Freightos Baltic Index (FBX): Global Container Freight Index



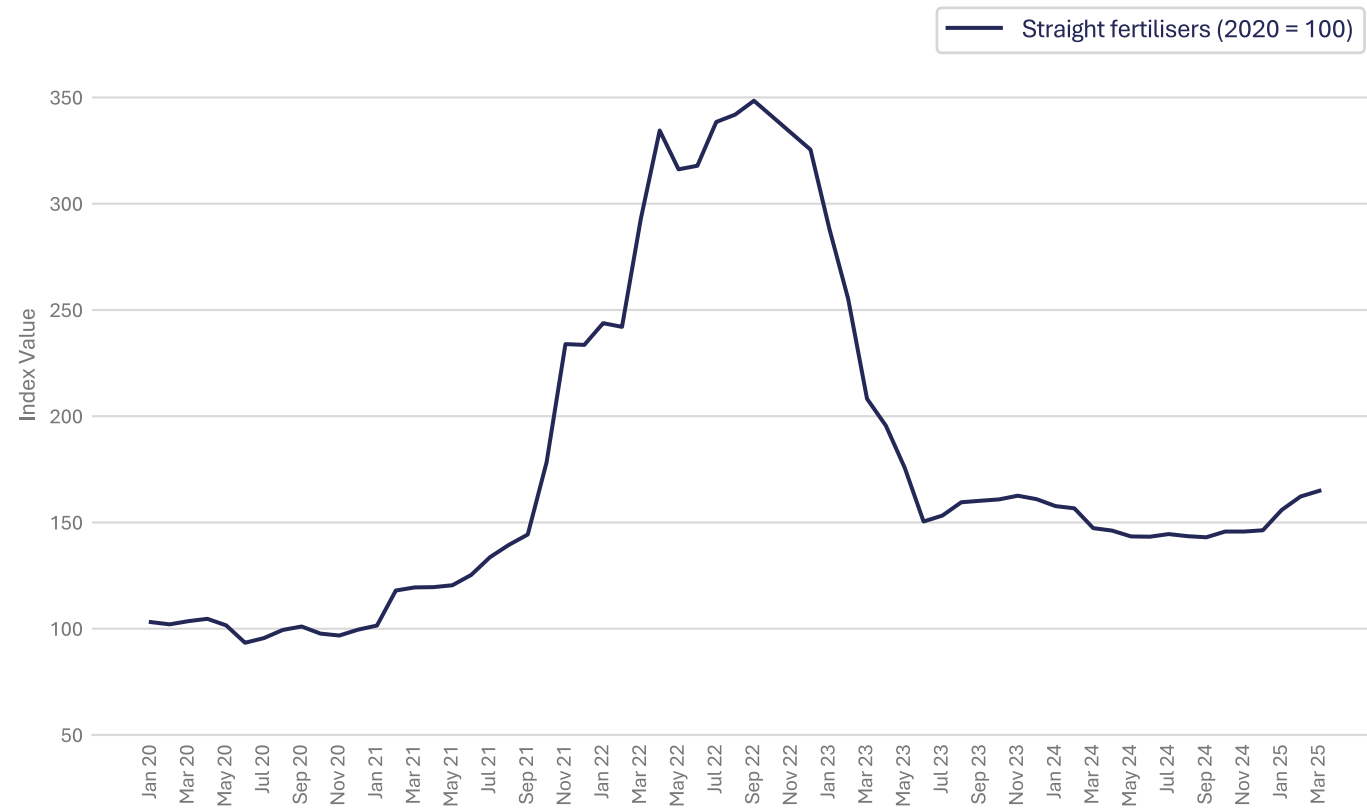
Source: Freightos, Global Container Index – note: each monthly index value is an average of the weekly index values

UK Haulage



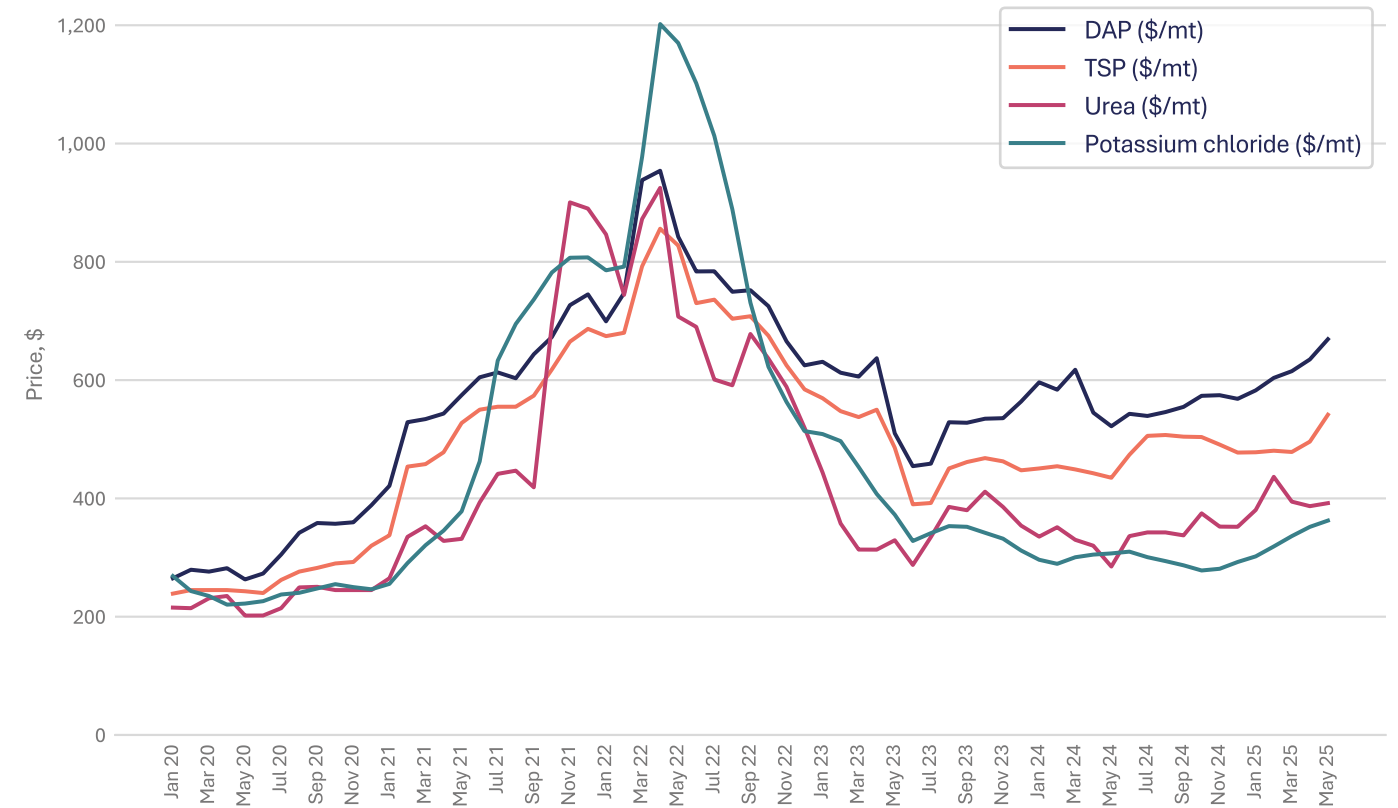
Source: Transport Exchange Group

Straight fertilisers



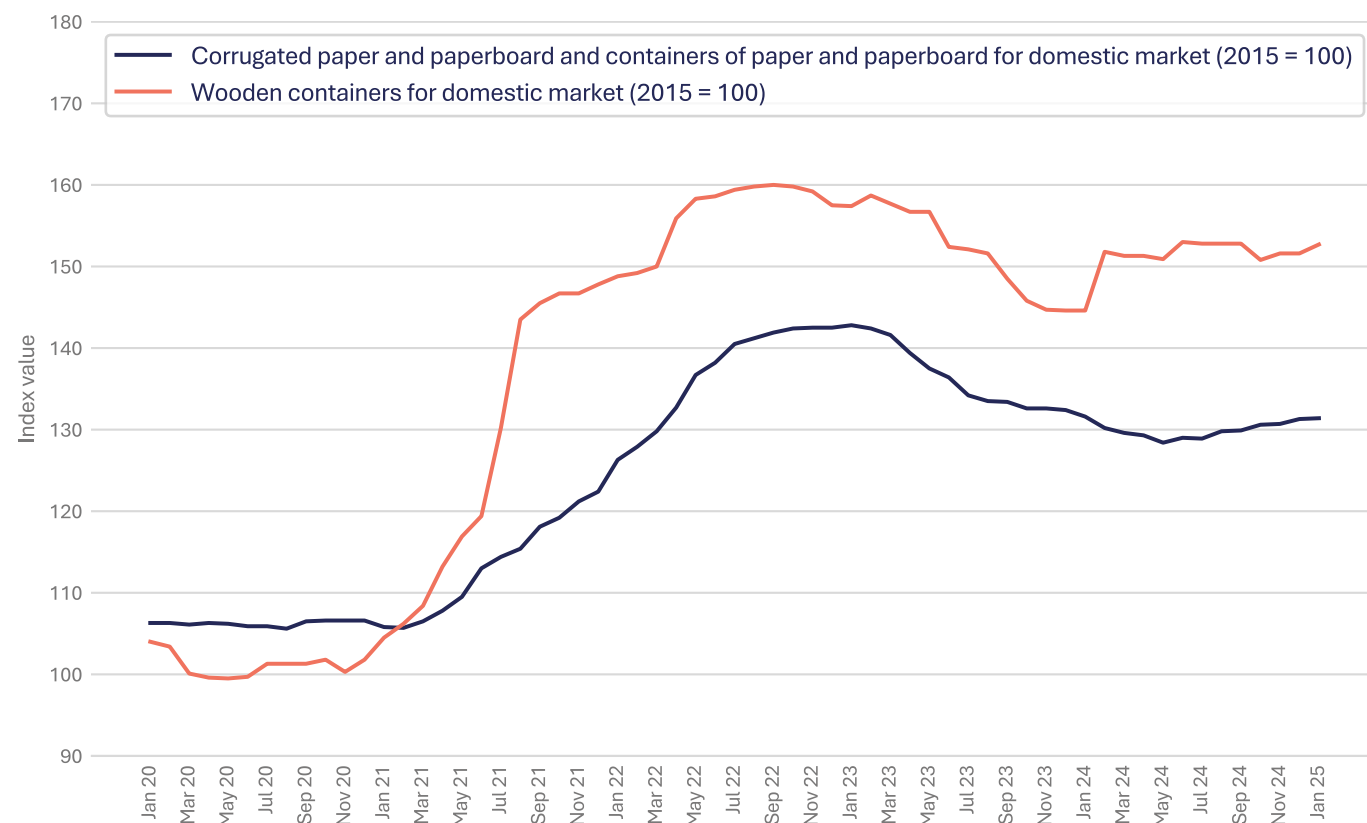
Source: Department for Environment, Food & Rural Affairs – note: this data is only available to March 2025

DAP, TSP, Urea and Potassium Chloride



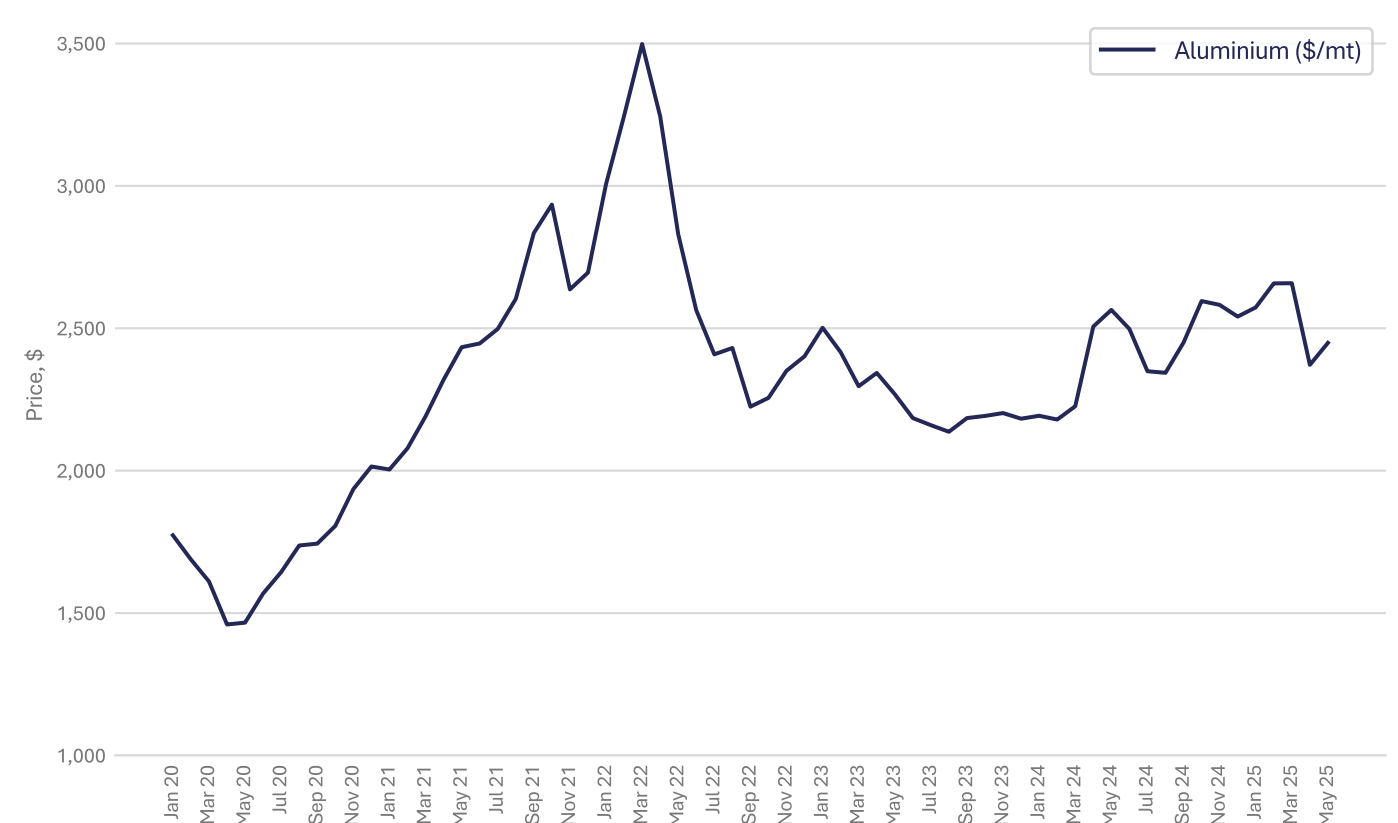
Source: World Bank Commodity Price Data

Packaging



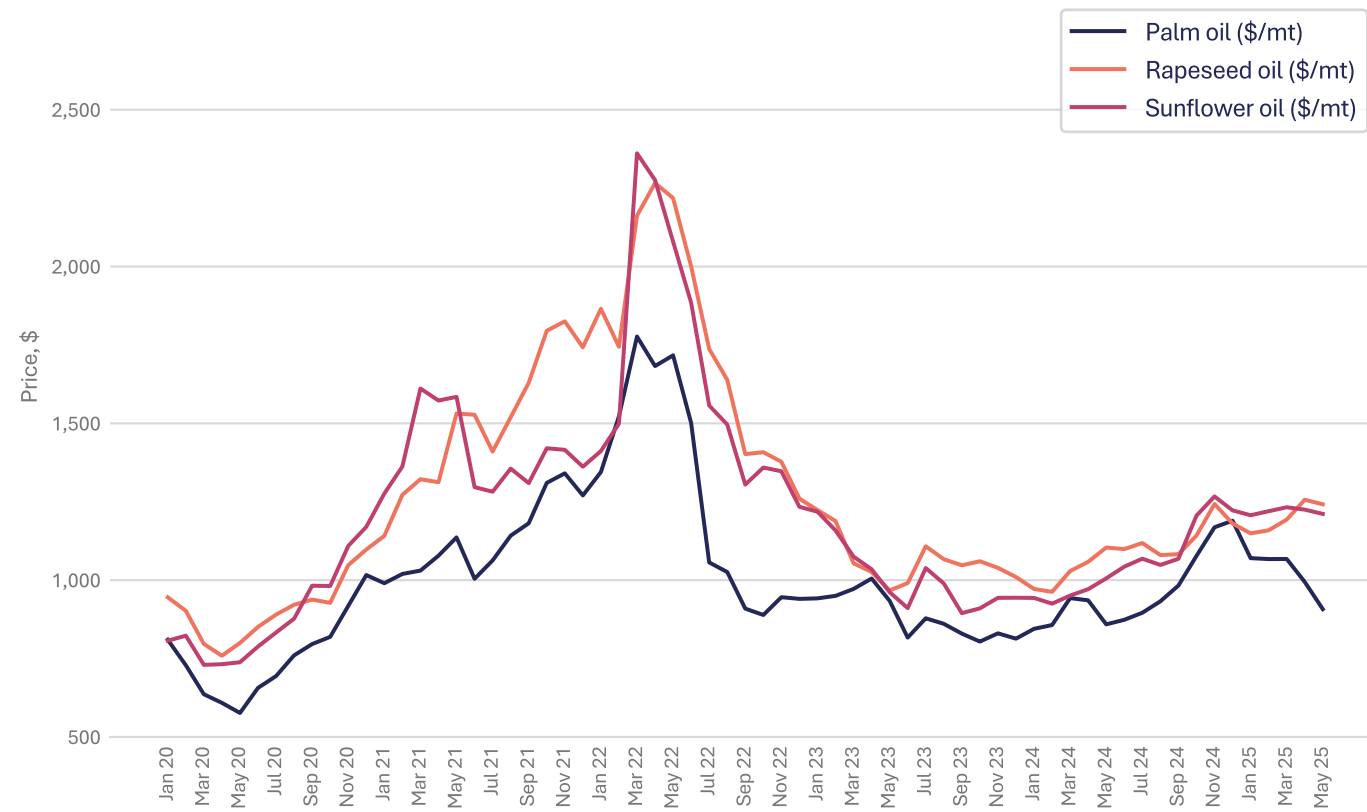
Source: Office for National Statistics – note: [the release of PPI data is being paused by the Office for National Statistics](#)

Aluminium



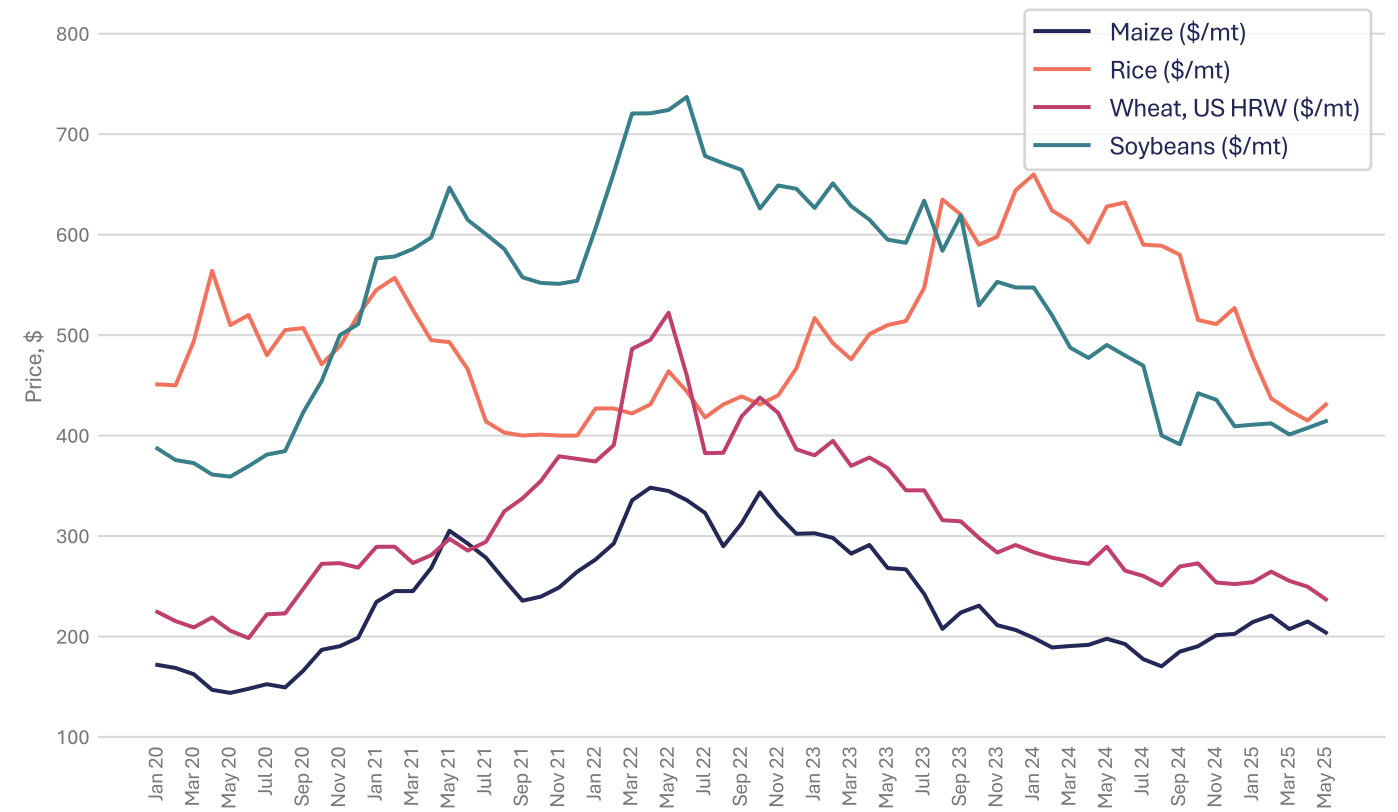
Source: World Bank Commodity Price Data

Palm oil, rapeseed oil and sunflower oil



Source: World Bank Commodity Price Data

Maize, rice, wheat and soybeans



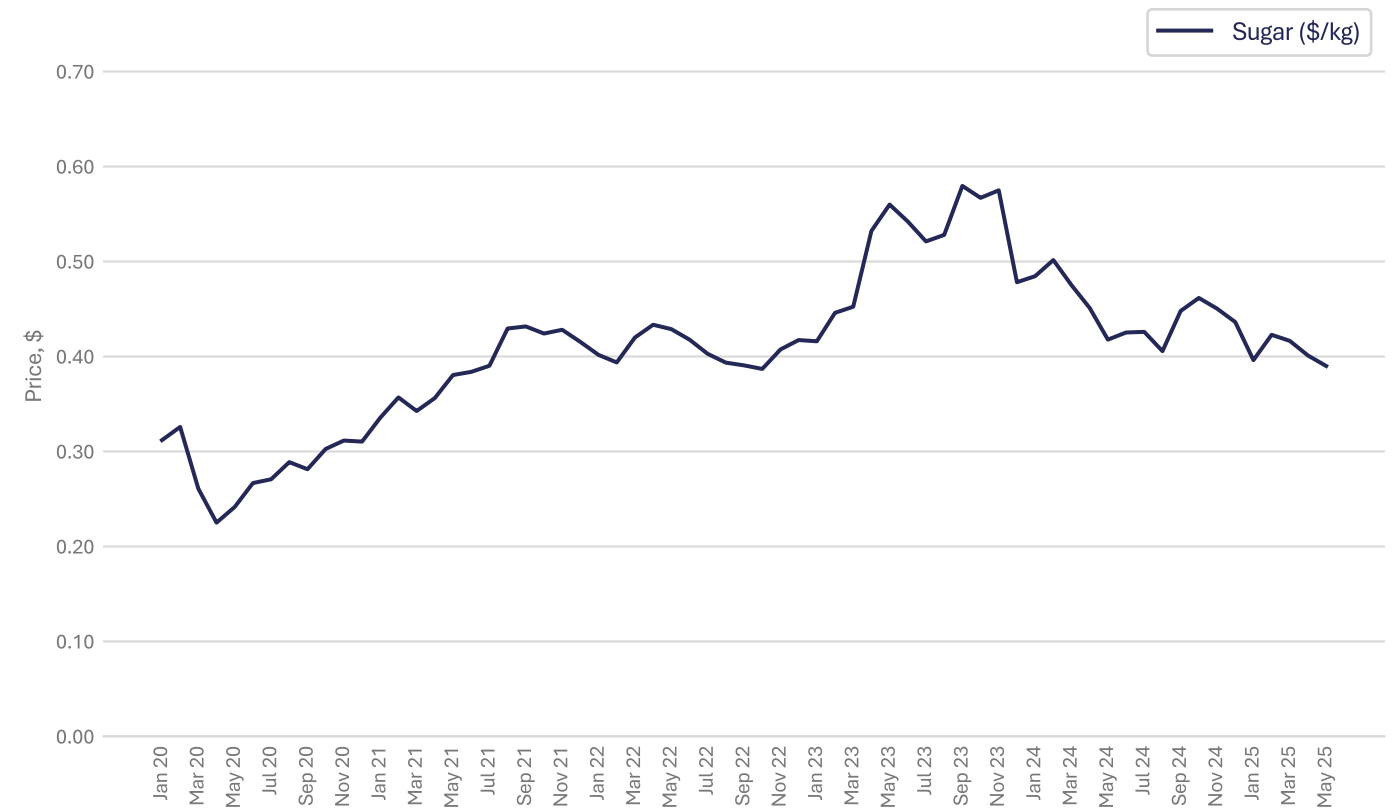
Source: World Bank Commodity Price Data

Feed wheat



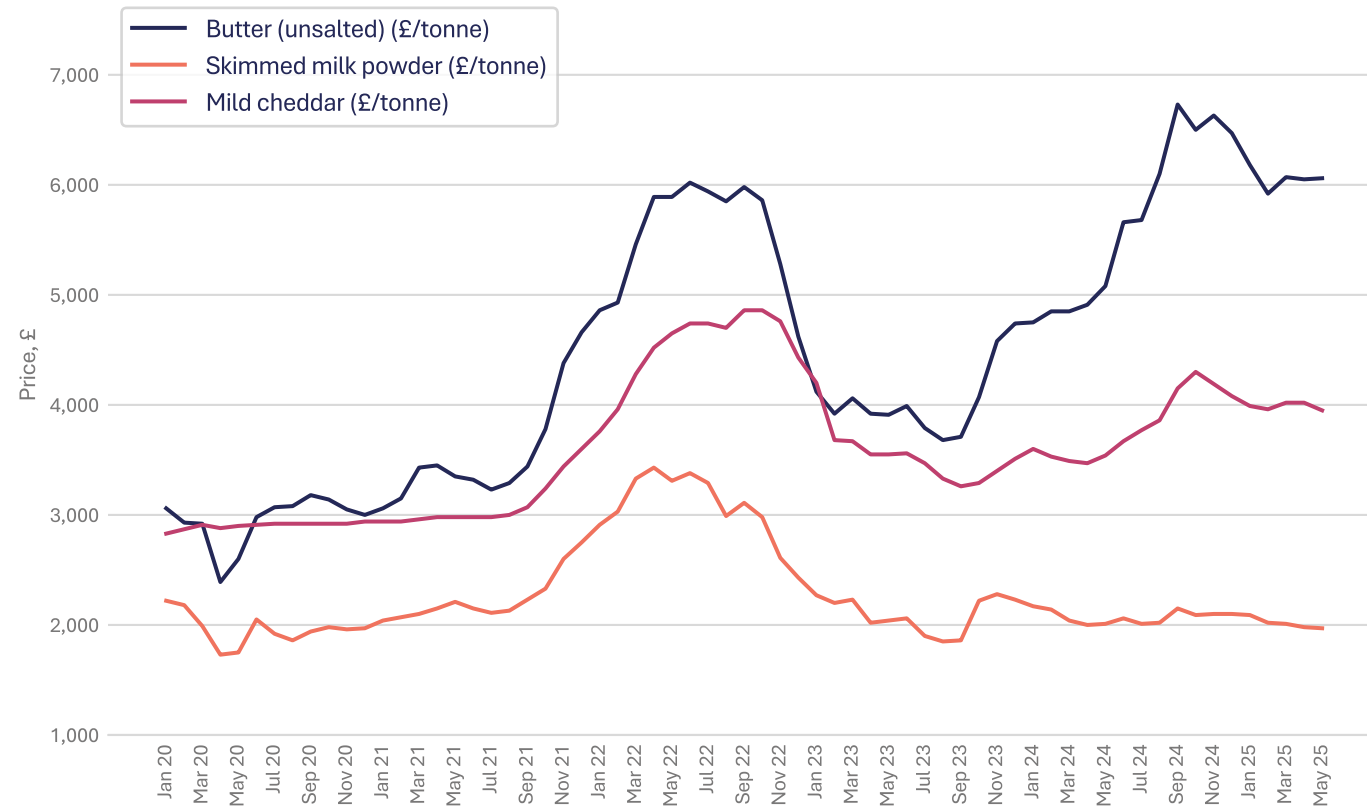
Source: Department for Environment, Food & Rural Affairs – note: this data is only available to March 2025

Sugar



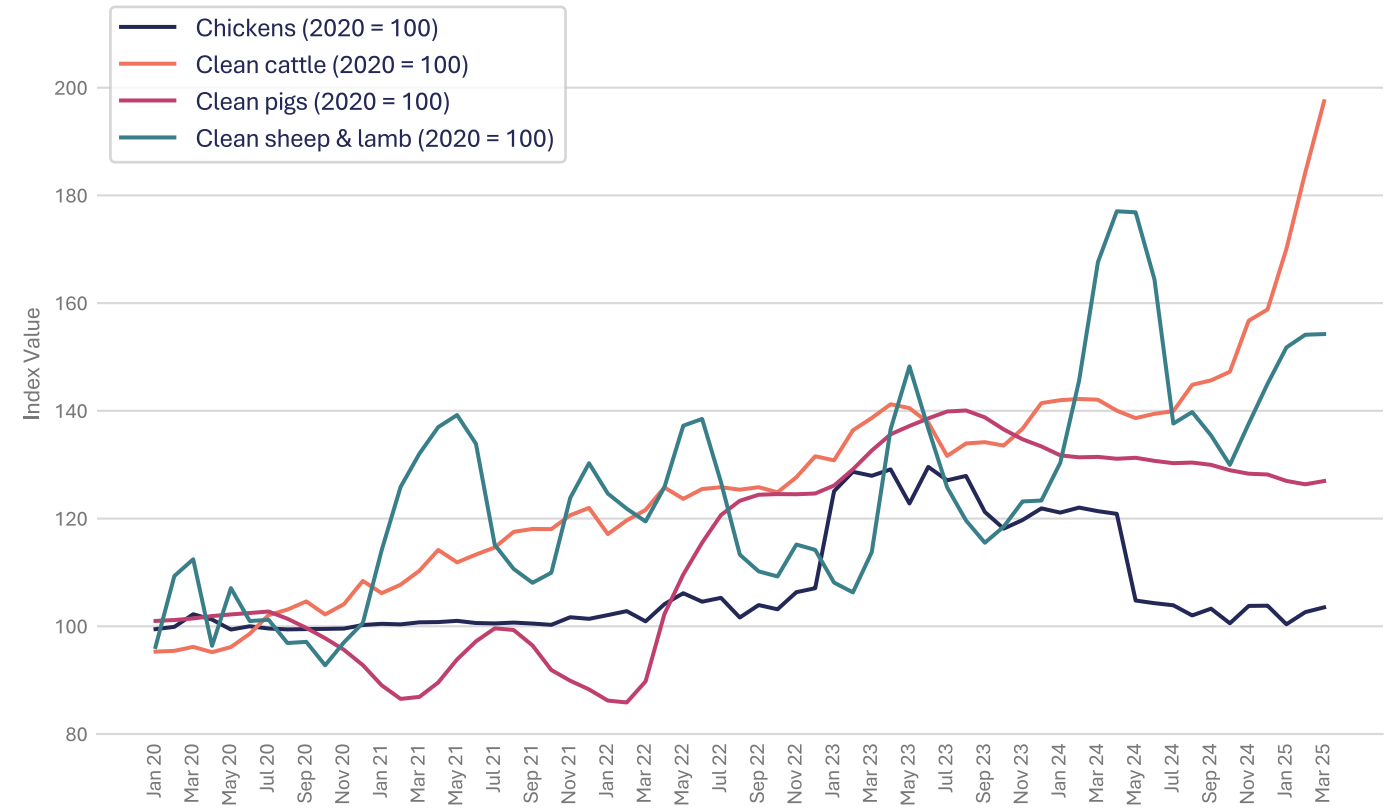
Source: World Bank Commodity Price Data

Butter, mild cheddar and skimmed milk powder



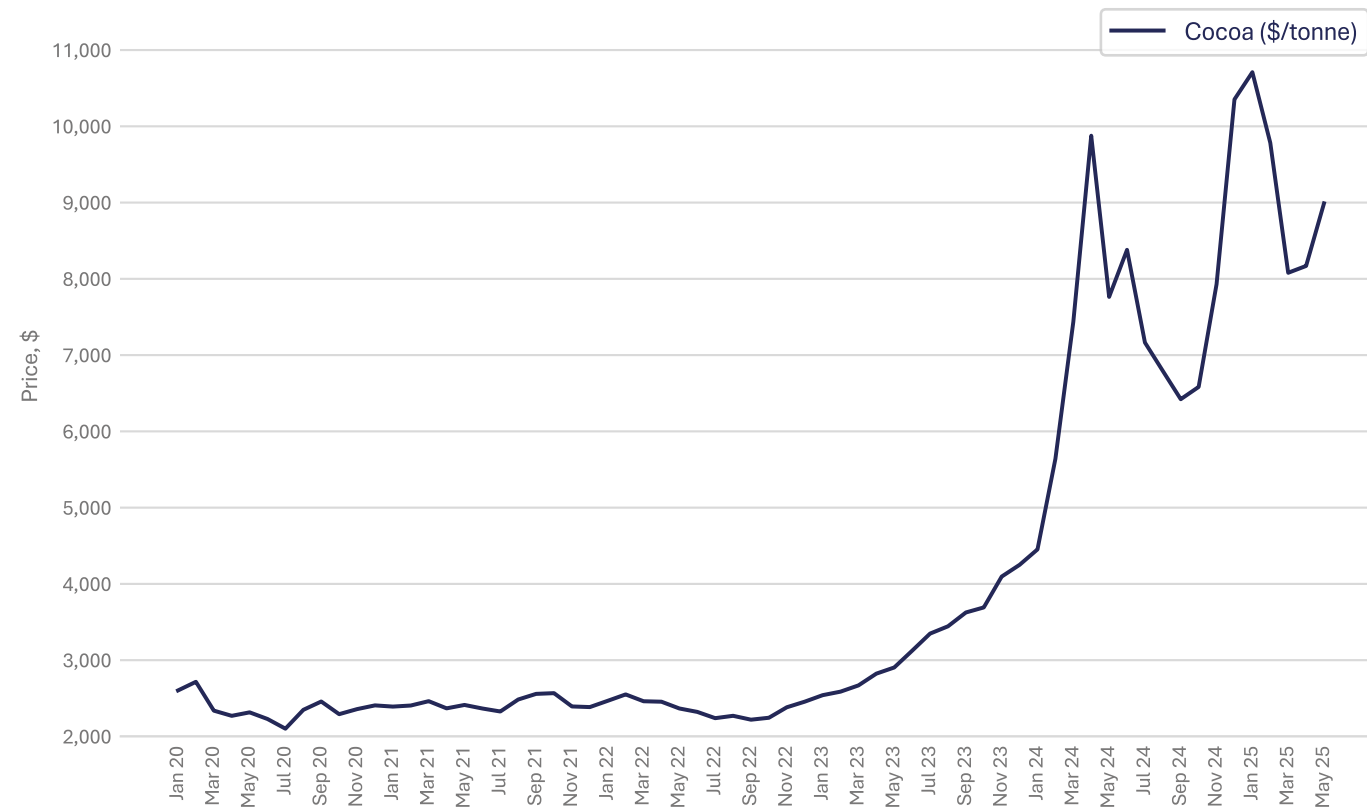
Source: Agricultural and Horticulture Development Board (AHDB)

Chicken, beef, pork and lamb



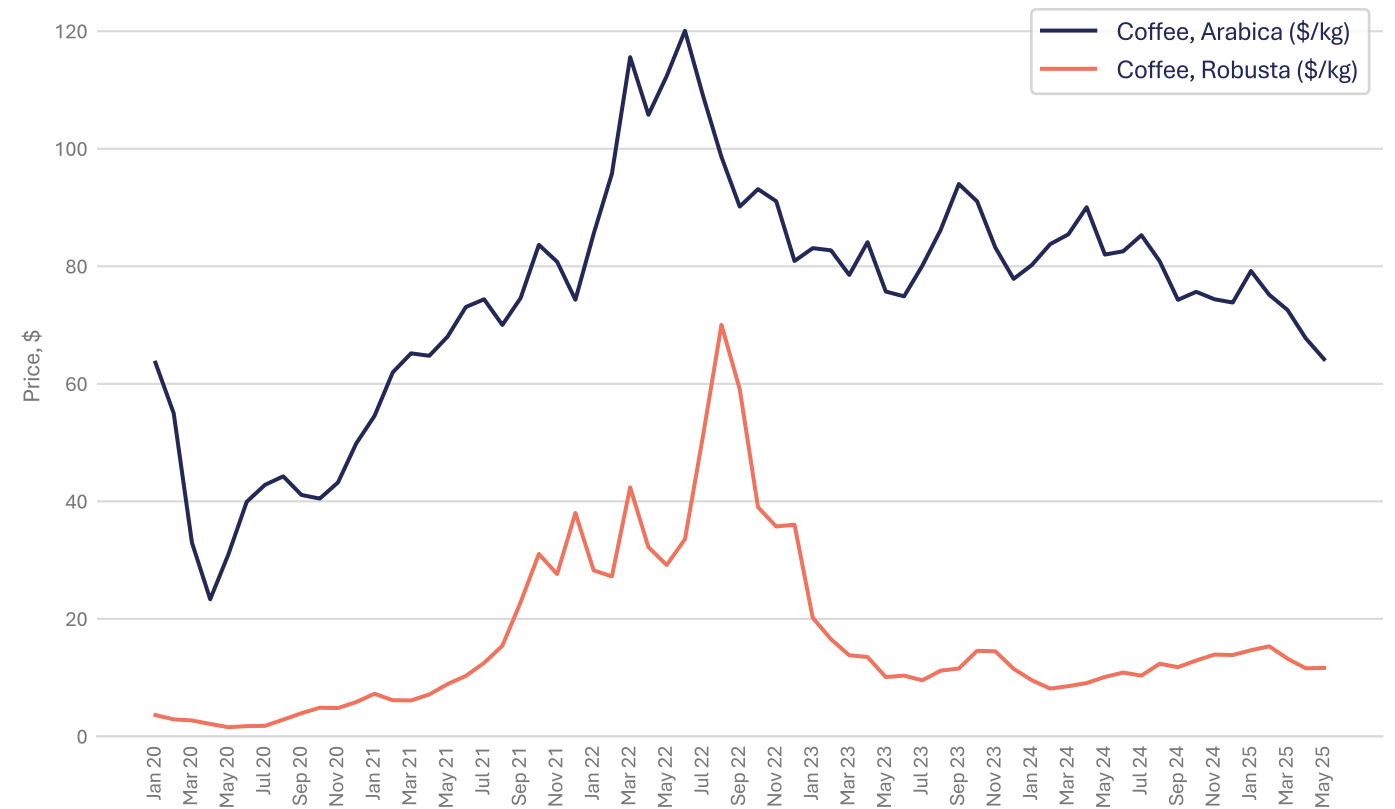
Source: Department for Environment, Food & Rural Affairs – note: this data is only available to March 2025

Cocoa



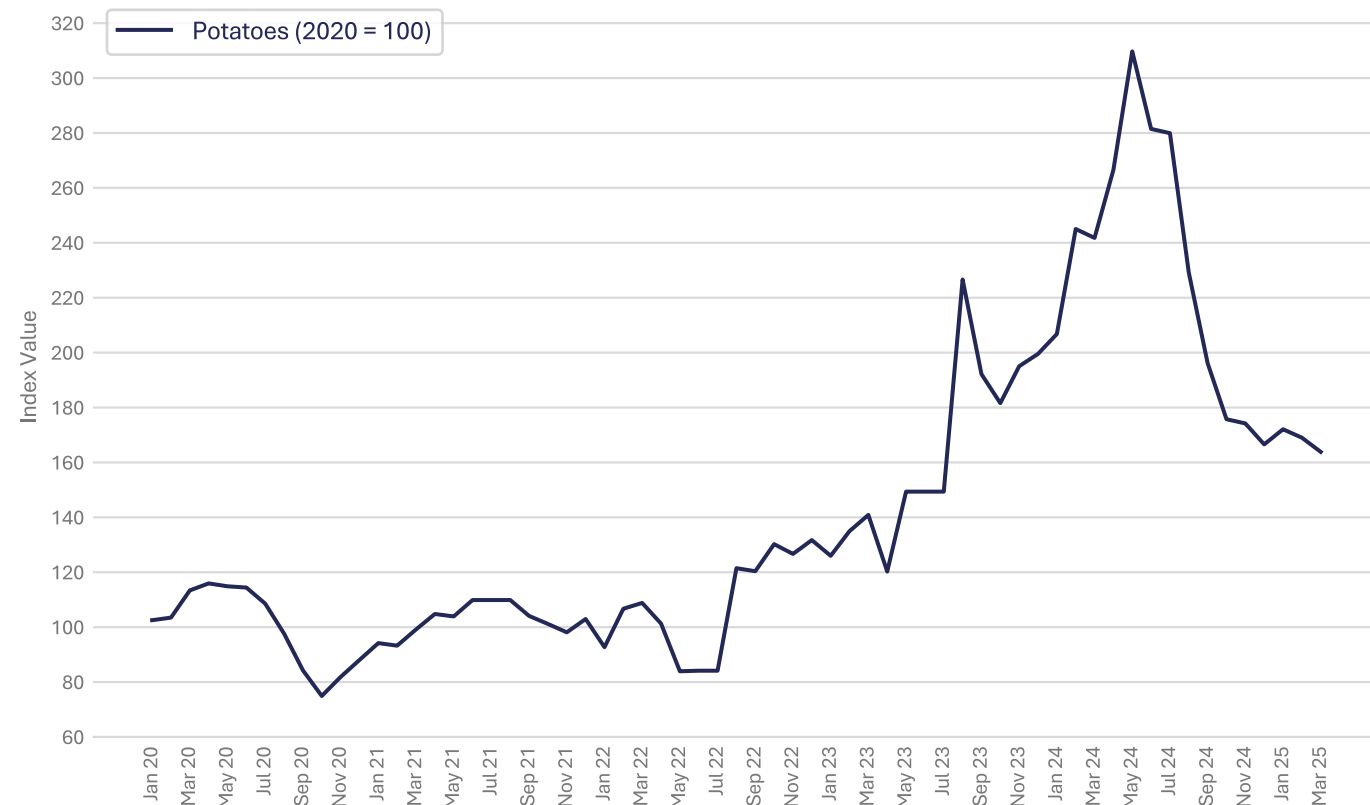
Source: International Cocoa Organization

Coffee



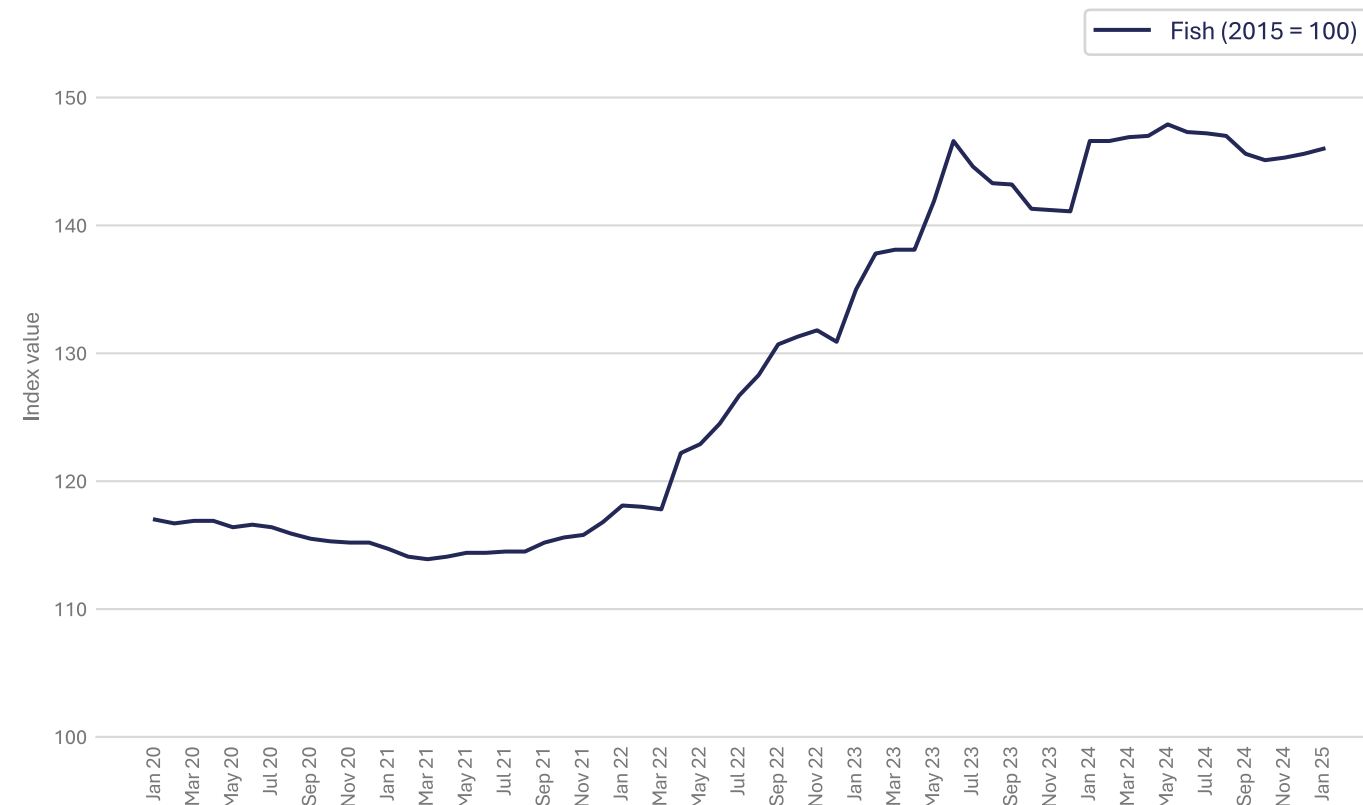
Source: World Bank Commodity Price Data

Potatoes



Source: Department for Environment, Food & Rural Affairs – note: this data is only available to March 2025

Preserved and processed fish, crustaceans and molluscs for domestic market



Source: Office for National Statistics – note: [the release of PPI data is being paused by the Office for National Statistics](#)

Data sources

Agriculture and Horticulture Development Board (AHDB), UK Wholesale Prices

International Cocoa Organization

Department for Environment, Food & Rural Affairs, Agricultural Price Indices

Office for National Statistics, Consumer Price Inflation & Producer Price Inflation

Eurostat, HICP - monthly data (annual rate of change)

The World Bank, Commodity Markets, Monthly Prices

Freightos, Global Container Freight Index (FBX)

Transport Exchange Group, Road Transport Price Index



The Food & Drink Federation (FDF) is the voice of the food and drink manufacturing industry – the UK's largest manufacturing sector.

We contribute over £38 billion to the country's economy, supporting half a million jobs in every region and nation, and producing products that are loved in the UK and beyond.

Find out more about our latest news and the work we do at:

FDF.org.uk

X @FoodanddrinkFed

LinkedIn