

FDF Prices Dashboard

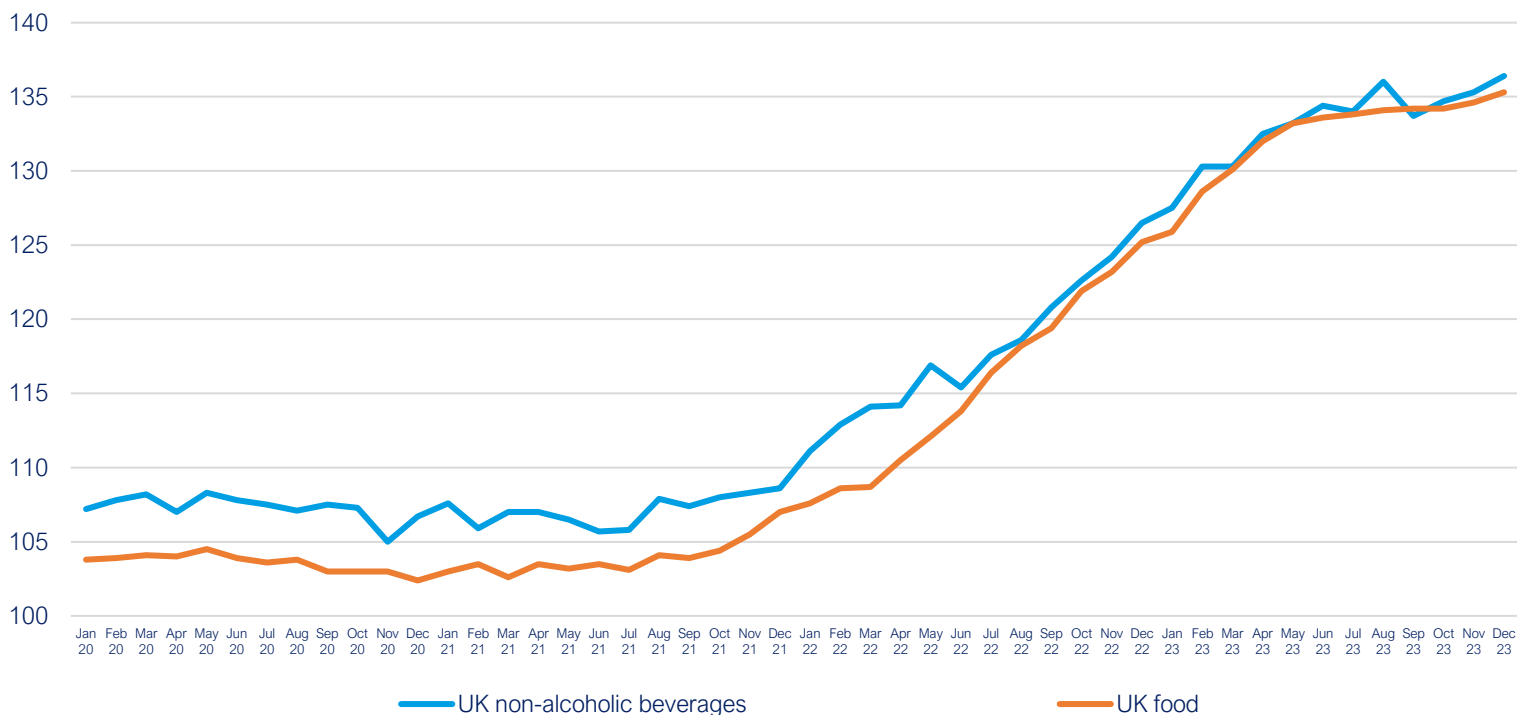
Data up to December 2023

Category		Value	Monthly change, %	Yearly change, %
UK food and non-alcoholic drink inflation (CPIH)				
UK food	Index	135.3	▲ 0.5%	▲ 8.1%
UK non-alcoholic drink	Index	136.4	▲ 0.4%	▲ 7.8%
UK producer prices (PPI)				
Input prices: domestic food	Index	142.4	▲ 0.5%	▼ - 2.5%
Input prices: imported food	Index	177.4	▲ 2.7%	▲ 10.5%
Output prices: food for domestic market	Index	133.6	▲ 0.1%	▲ 1.8%
Energy prices and transportation				
Crude oil, brent (\$/bbl)	Price	78	▼ - 6.4%	▼ - 3.8%
Natural gas (\$/mmbtu)	Price	12	▼ - 20.6%	▼ - 68.1%
UK natural gas (£/thm)	Price	81	▼ - 24.7%	▼ - 56.6%
Shipping container rates	Index	1283.6	▲ 8.9%	▼ - 43.5%
UK haulage	Index	127.0	▲ 3.9%	▼ - 2.7%
Fertiliser	Index	160.9	▲ 0.4%	▼ - 52.8%
Packaging				
Paper and paperboard	Index	132.5	▲ 0.1%	▼ - 6.9%
Wooden containers	Index	144.7	▬ 0.0%	▼ - 8.1%
Aluminium (\$/mt)	Price	2,182	▼ - 0.9%	▼ - 9.1%
Agricultural raw materials				
Sunflower oil (\$/mt)	Price	944	▬ 0.0%	▼ - 23.5%
Rapeseed oil (\$/mt)	Price	1,010	▼ - 2.8%	▼ - 19.8%
Palm oil (\$/mt)	Price	814	▼ - 2.0%	▼ - 13.5%
Wheat, US HRW (\$/mt)	Price	291	▲ 2.7%	▼ - 24.6%
Maize (\$/mt)	Price	207	▼ - 2.2%	▼ - 31.7%
Rice (\$/mt)	Price	644	▲ 7.7%	▲ 37.9%
Soybeans (\$/mt)	Price	547	▼ - 1.0%	▼ - 15.2%
Feed wheat (UK)	Index	116	▲ 1.6%	▼ - 29.4%
Sugar (\$/kg)	Price	0.48	▼ - 15.7%	▲ 17.4%
Cheese (£/tonne)	Price	3,510	▲ 3.2%	▼ - 20.8%
Butter (£/tonne)	Price	4,740	▲ 3.5%	▲ 2.6%
Skimmed milk powder (£/tonne)	Price	2,230	▼ - 2.2%	▼ - 8.2%
Eggs (UK)	Index	168.8	▬ 0.0%	▲ 25.0%
Beef (UK)	Index	133.9	▲ 1.8%	▲ 6.8%
Chicken (UK)	Index	128.0	▲ 0.6%	▲ 25.9%
Pork (UK)	Index	140.1	▲ 0.1%	▲ 13.6%
Potatoes (UK)	Index	181.6	▼ - 5.5%	▲ 39.4%
Fish (UK)	Index	141.1	▬ 0.0%	▲ 7.8%

[Back to Title Page](#)

UK food and non-alcoholic drink inflation (CPIH)

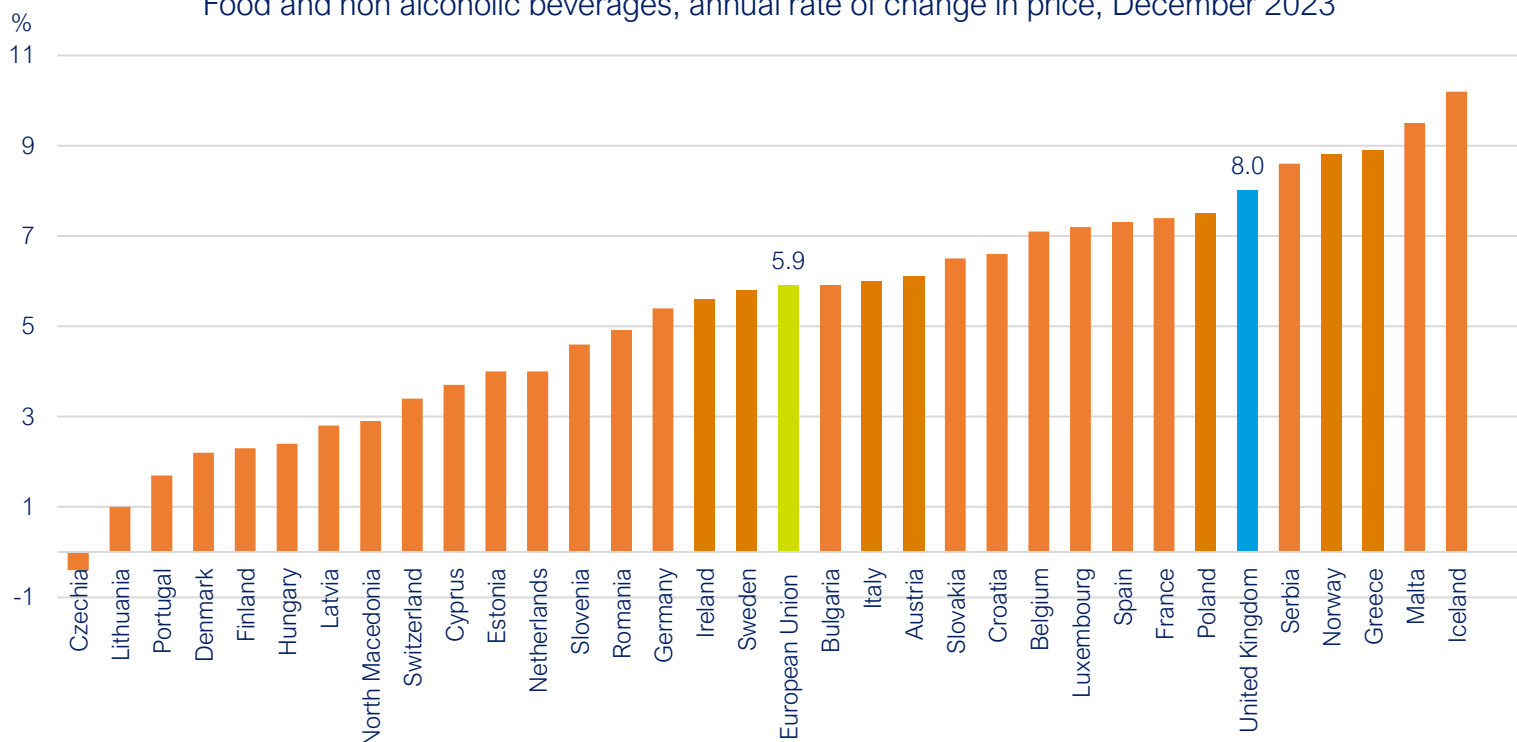
UK food and UK non-alcoholic beverages, 2015=100



Source: Office for National Statistics

Food and drink inflation comparison with Europe

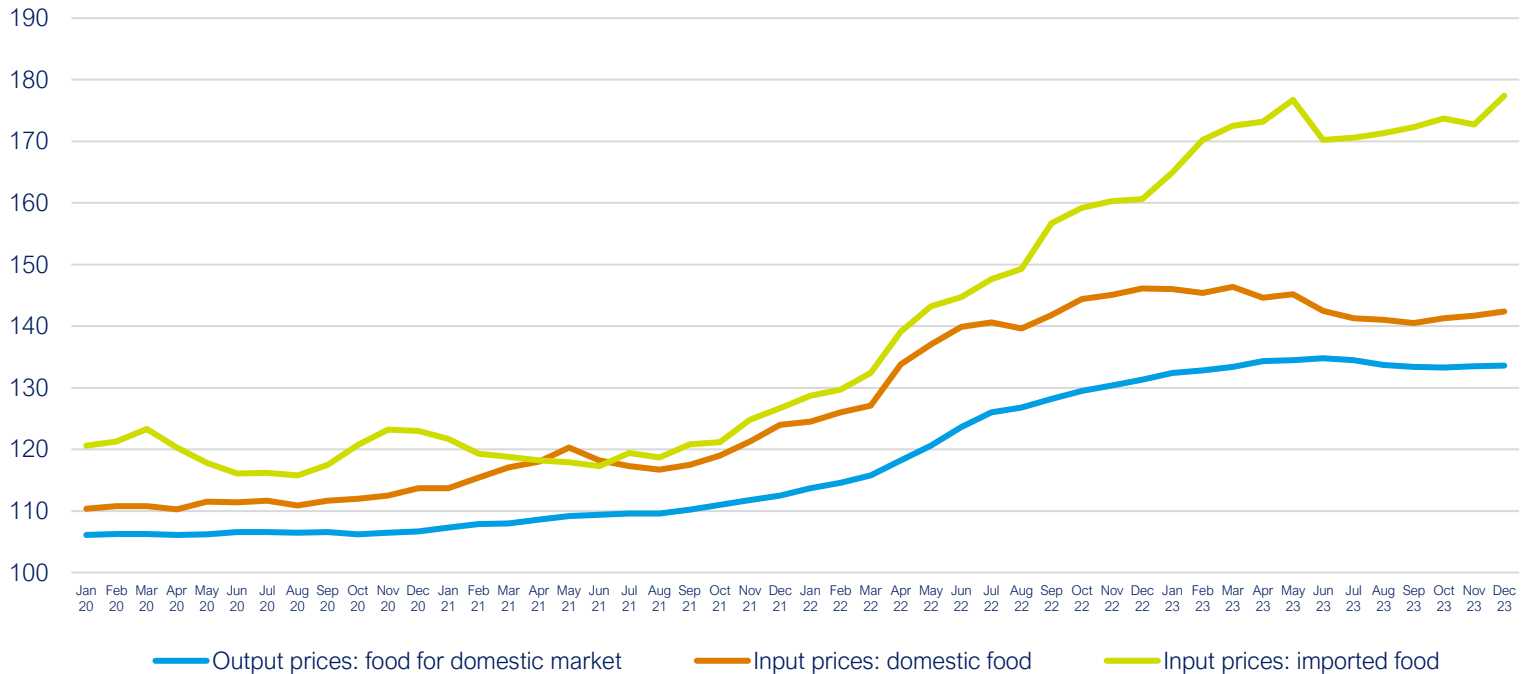
Food and non alcoholic beverages, annual rate of change in price, December 2023



Source: Eurostat

UK producer prices (PPI)

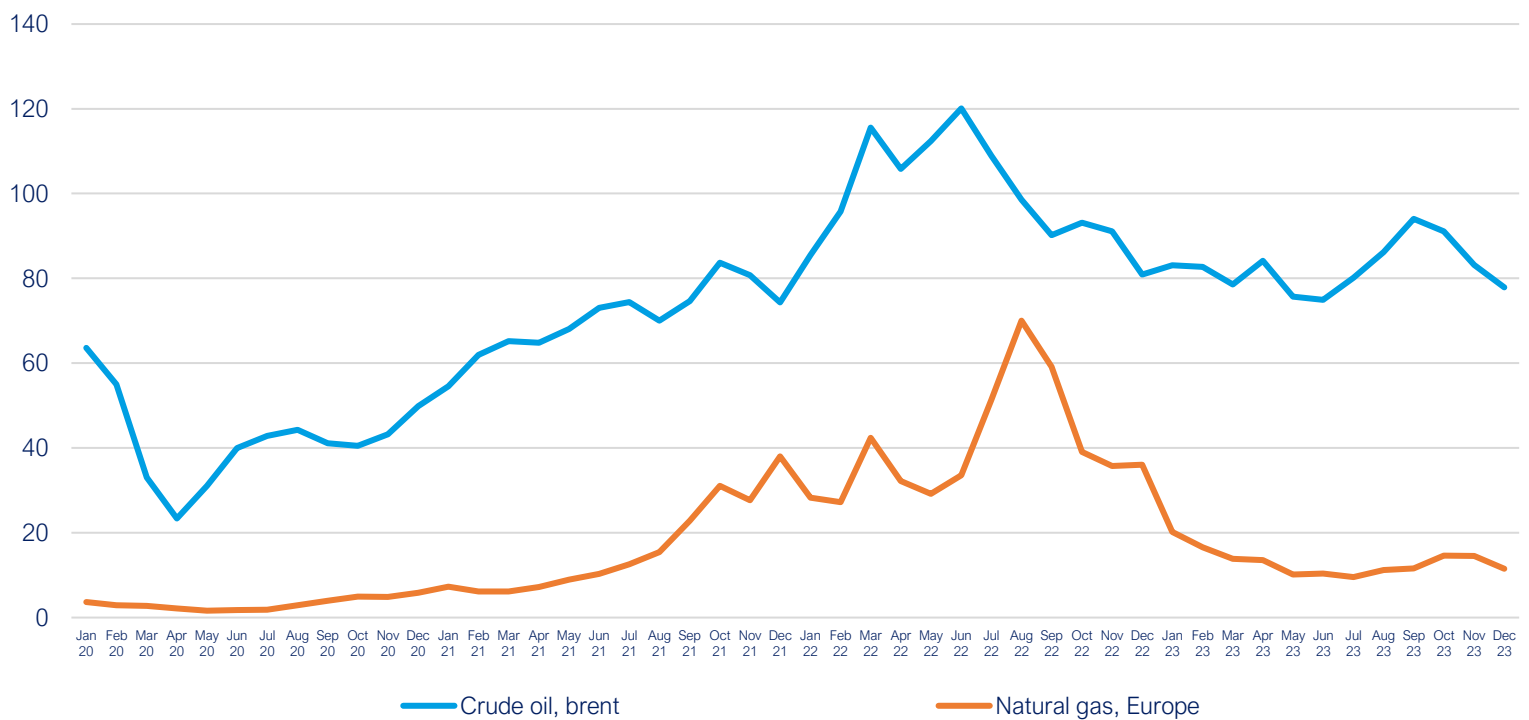
Input prices (domestic food), input prices (imported food), output prices (food for domestic market), 2015 = 100



Source: Office for National Statistics

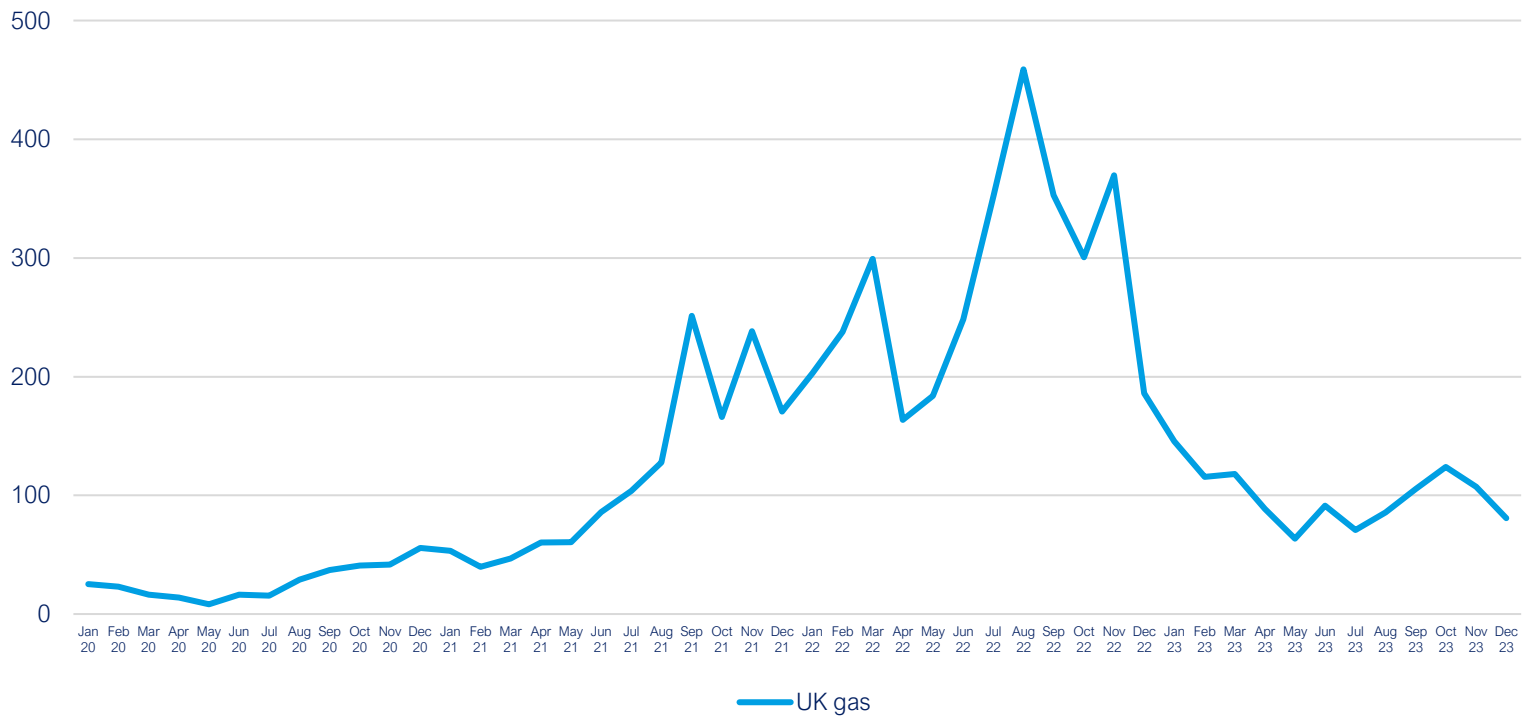
Energy prices and transportation

Crude oil (\$/bbl) and natural gas (\$/mmbtu)



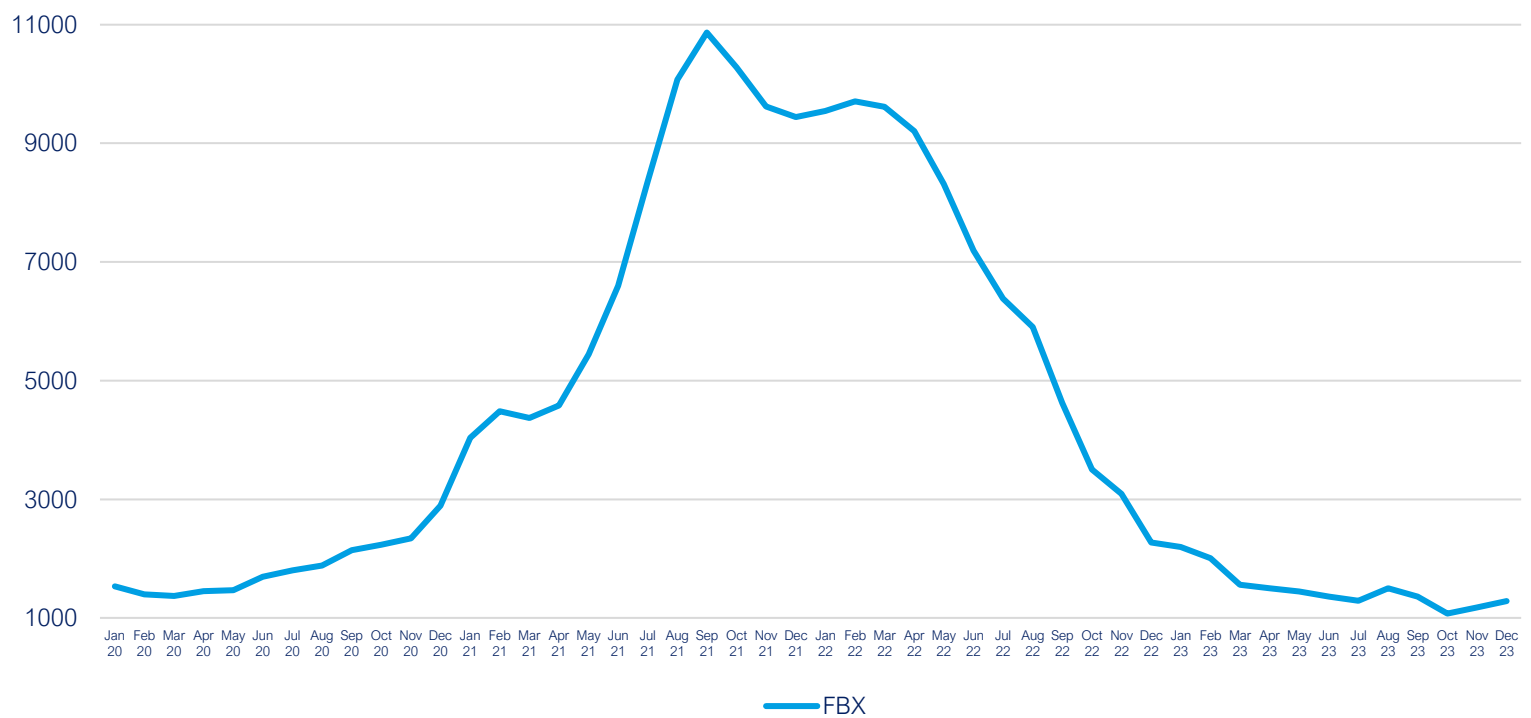
Source: World Bank Commodity Price Data

UK natural gas (£/thm)



Source: Trading Economics

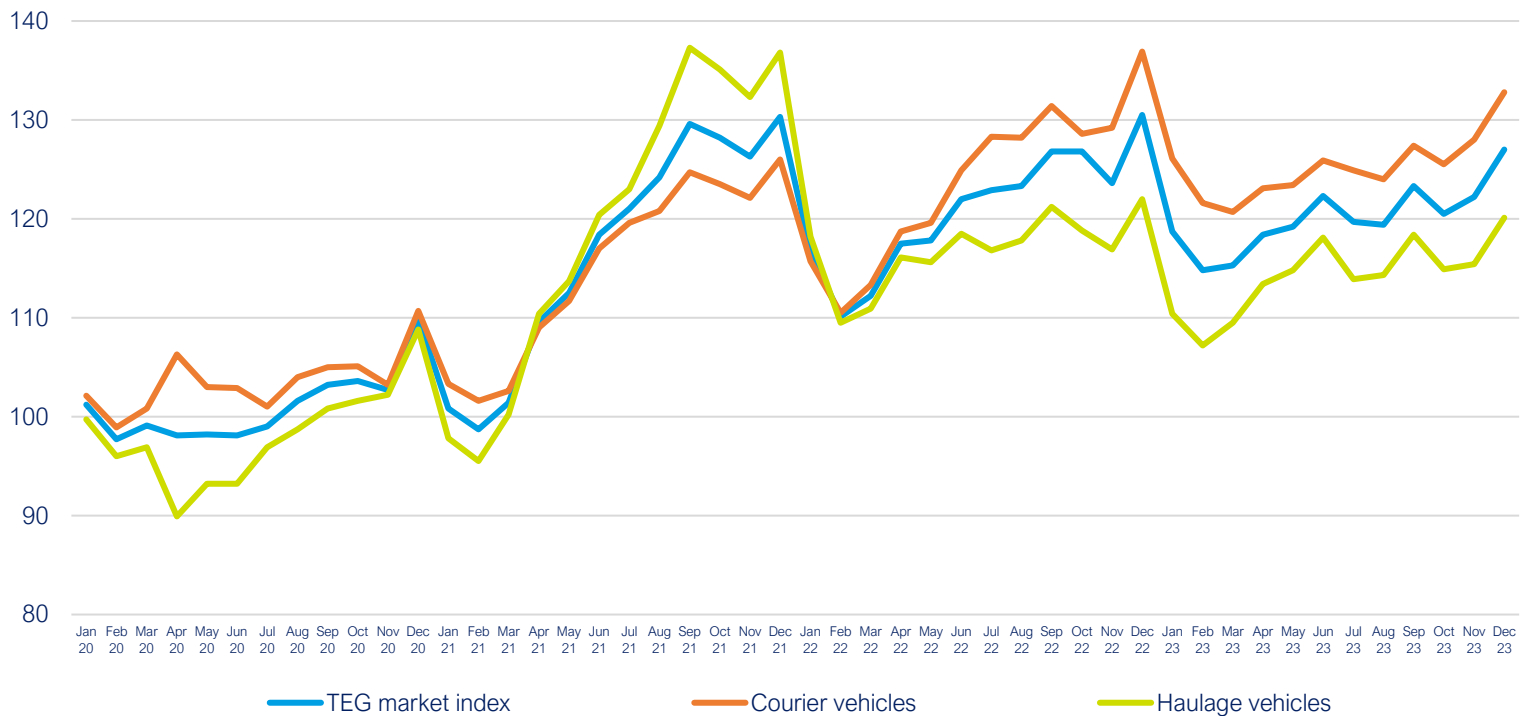
Freightos Baltic Index (FBX): Global Container Freight Index



Source: Freightos, Global Container Index

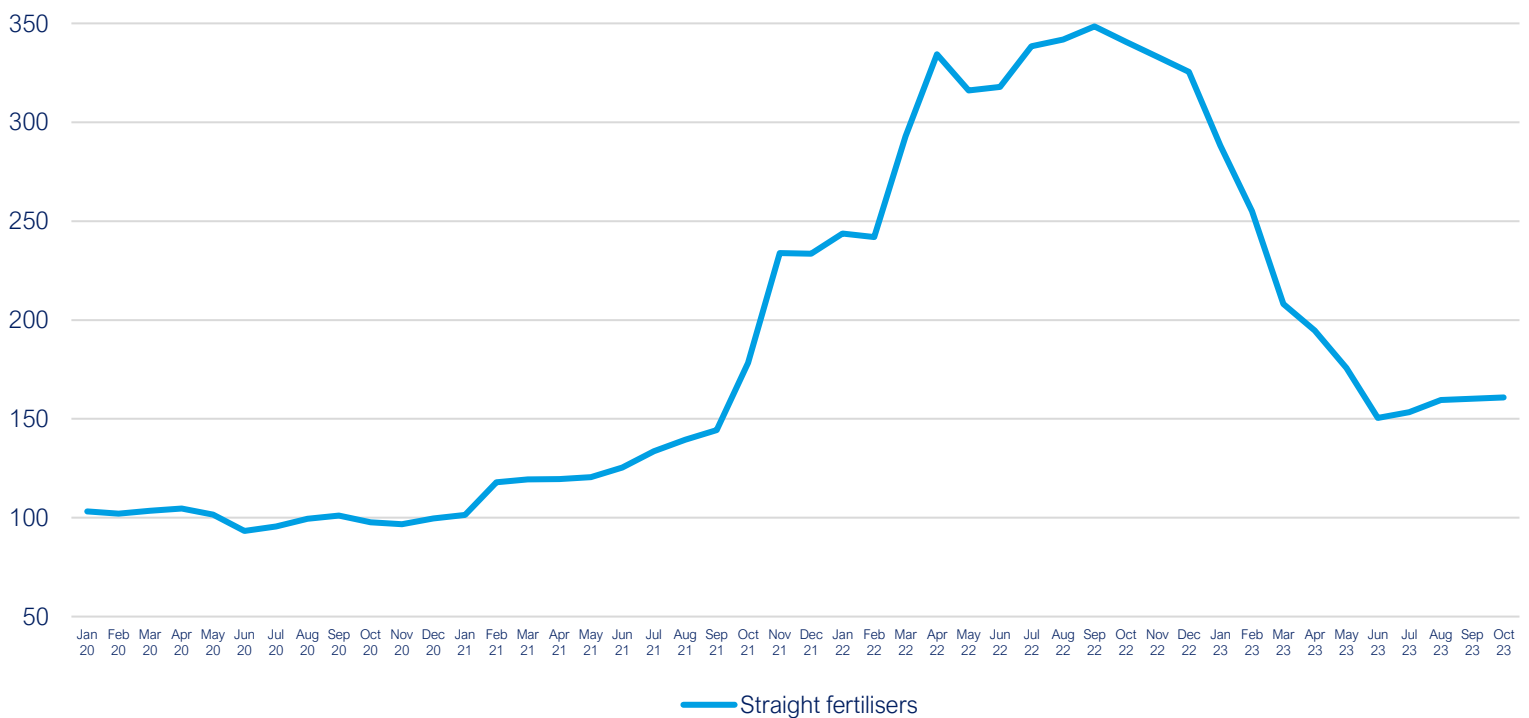
Note: Each monthly index value is an average of the weekly index values of that month

UK haulage, Jan 2019 = 100



Source: Transport Exchange Group

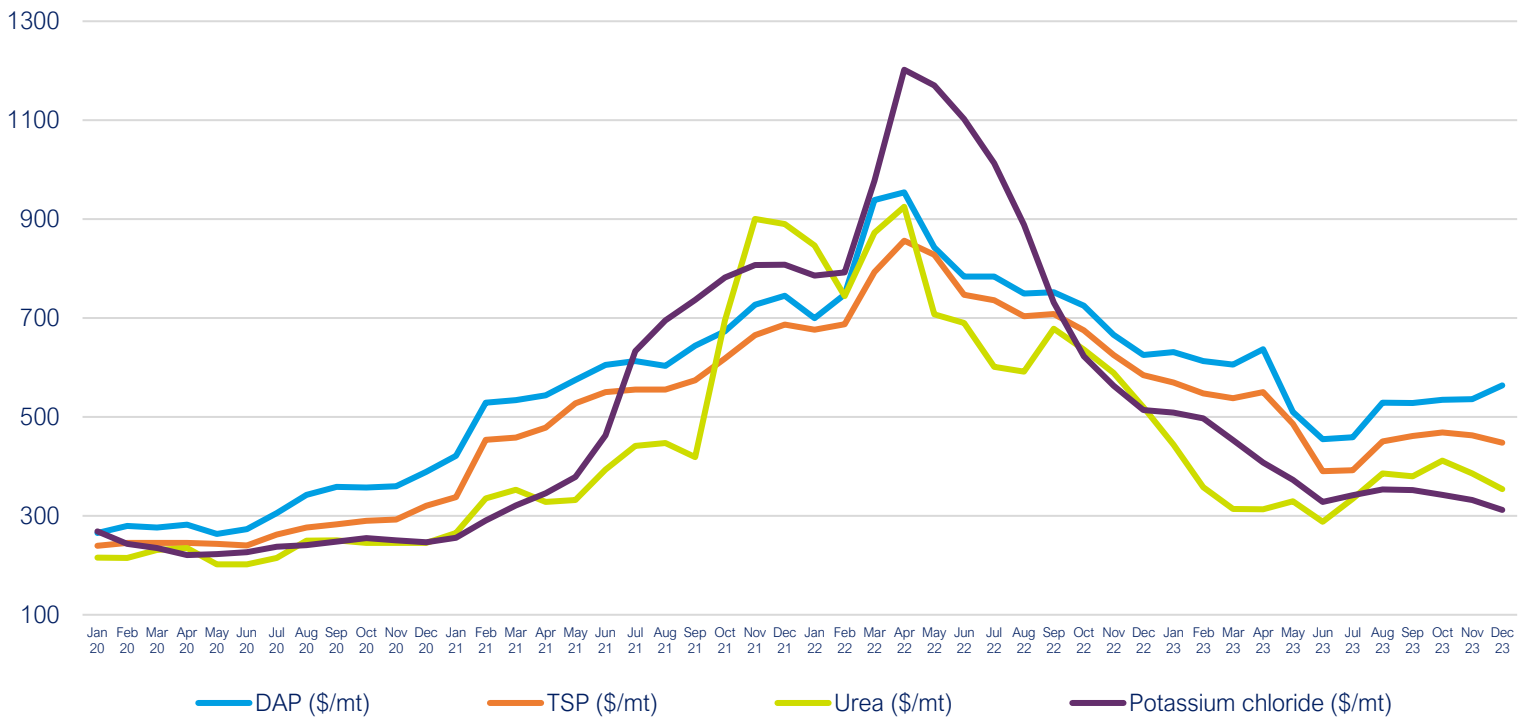
Straight fertilisers, 2020 = 100



Source: Department for Environment, Food & Rural Affairs

Note: Data for November 2023 will be released on 25 January.

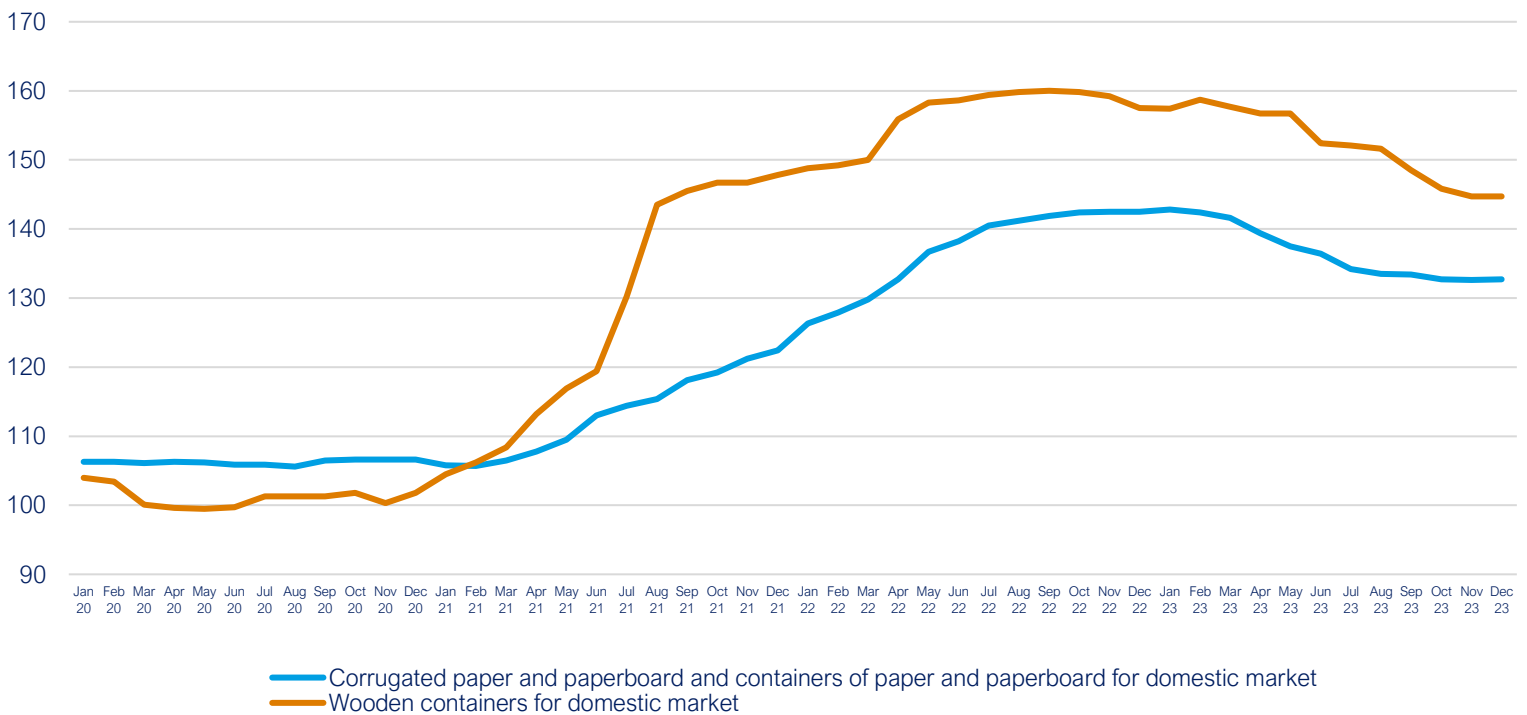
DAP, TSP, Urea, Potassium Chloride, (\$/mt)



Source: World Bank Commodity Price Data

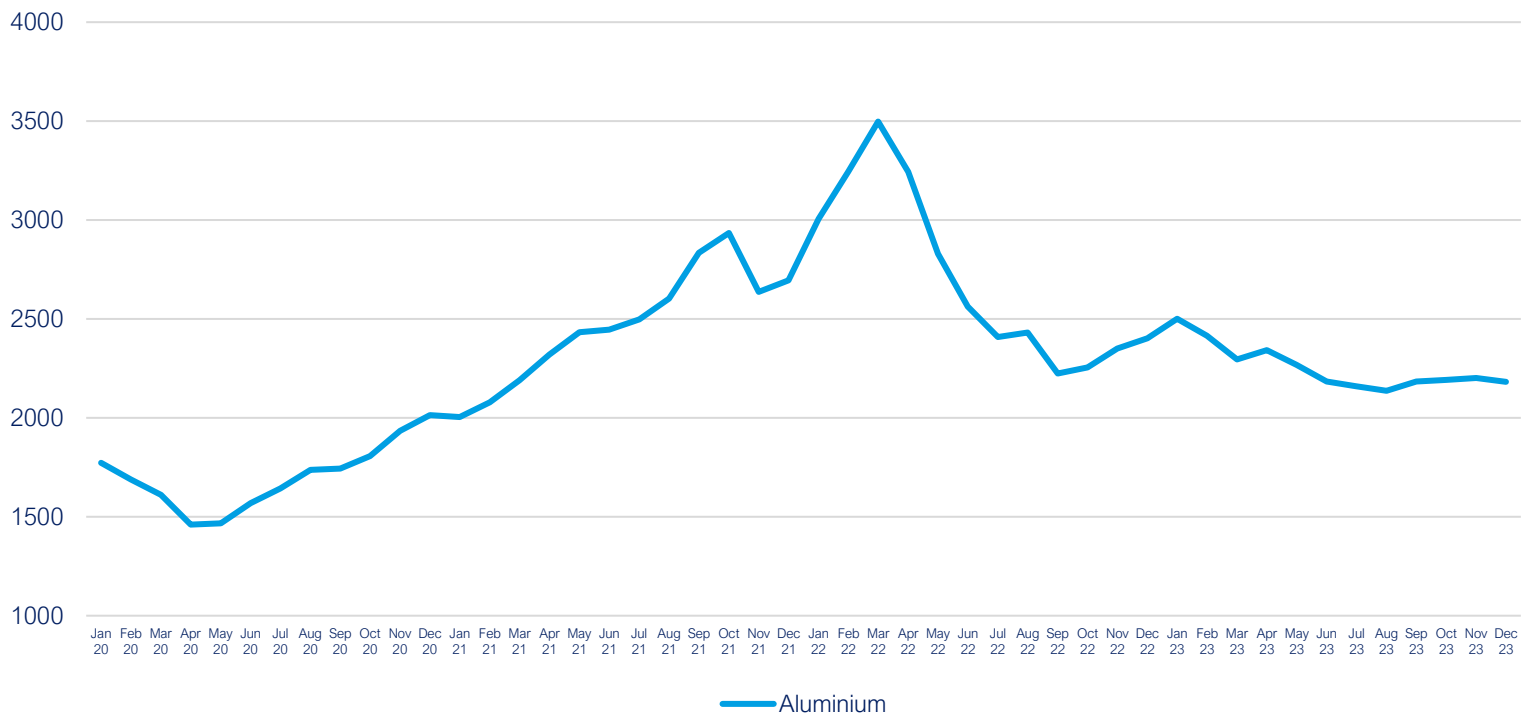
Packaging

Packaging, 2015 = 100



Source: Office for National Statistics

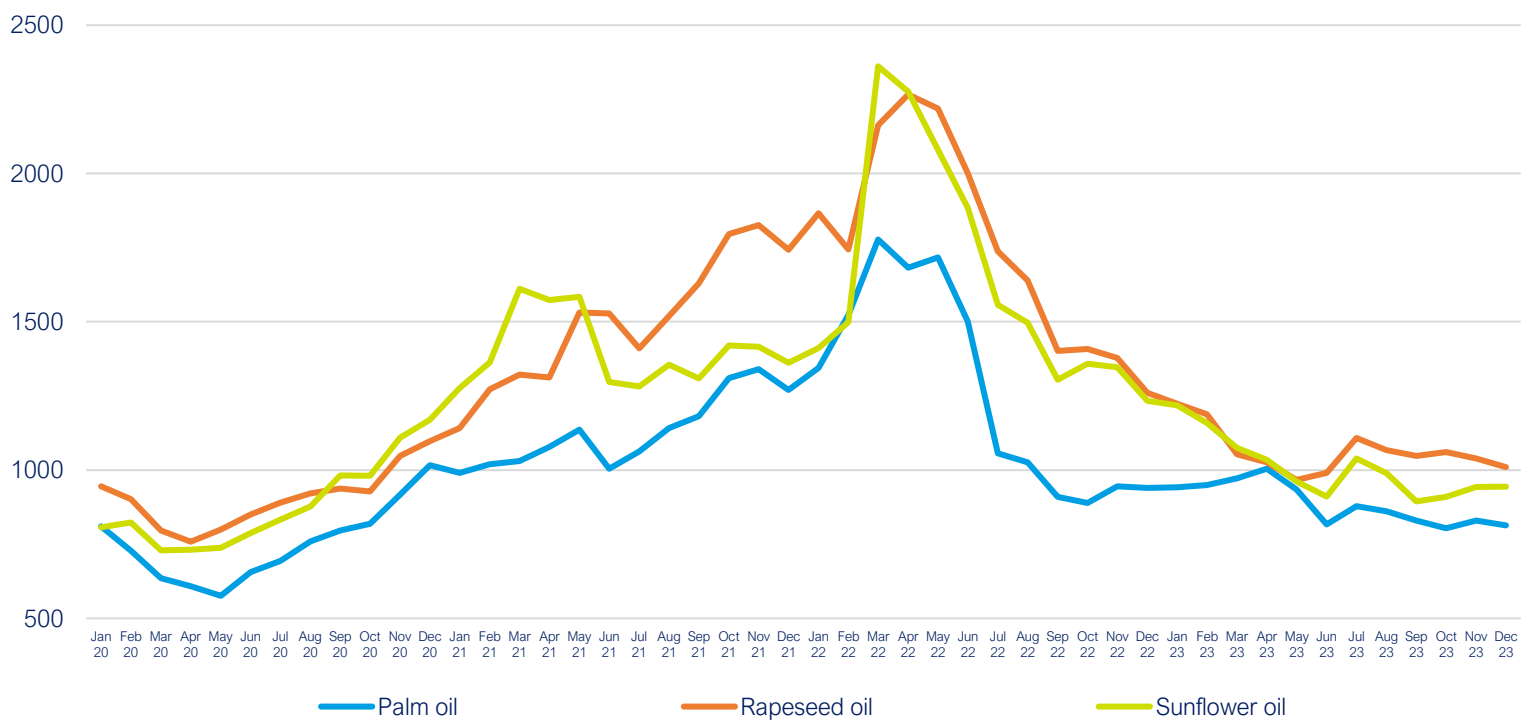
Aluminium (\$/mt)



Source: World Bank Commodity Price Data

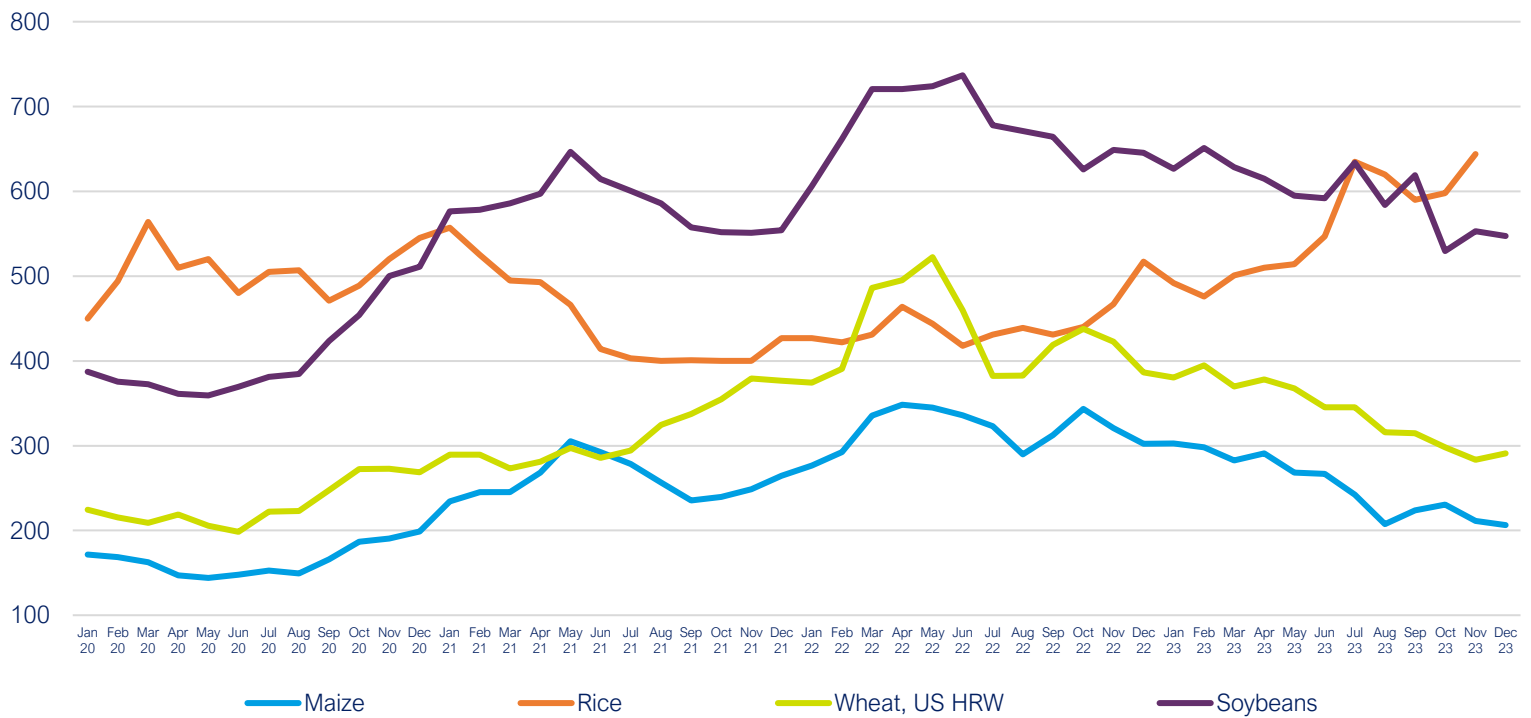
Agricultural raw materials

Palm oil, rapeseed oil and sunflower oil (\$/mt)



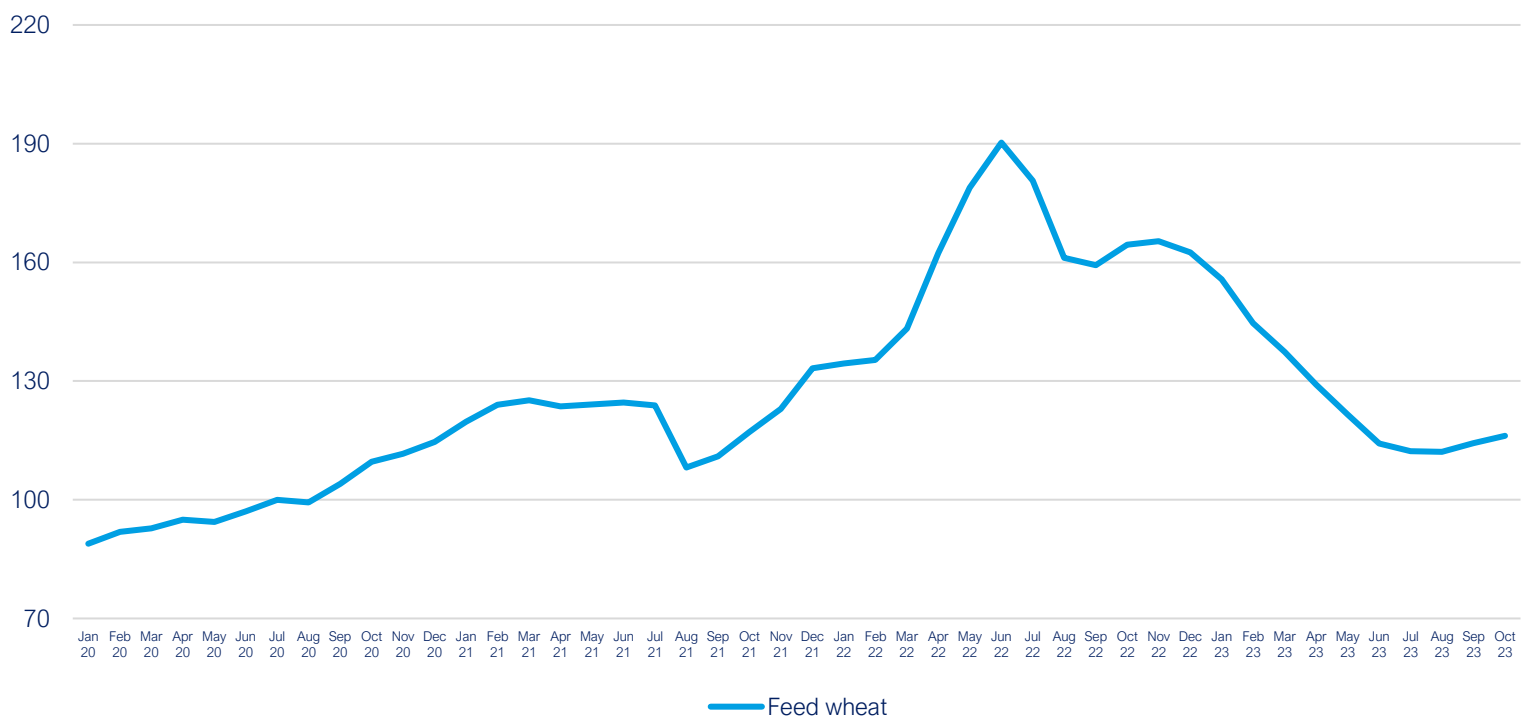
Source: World Bank Commodity Price Data

Maize, rice, wheat and soybeans (\$/mt)



Source: World Bank Commodity Price Data

Feed wheat, 2020 = 100

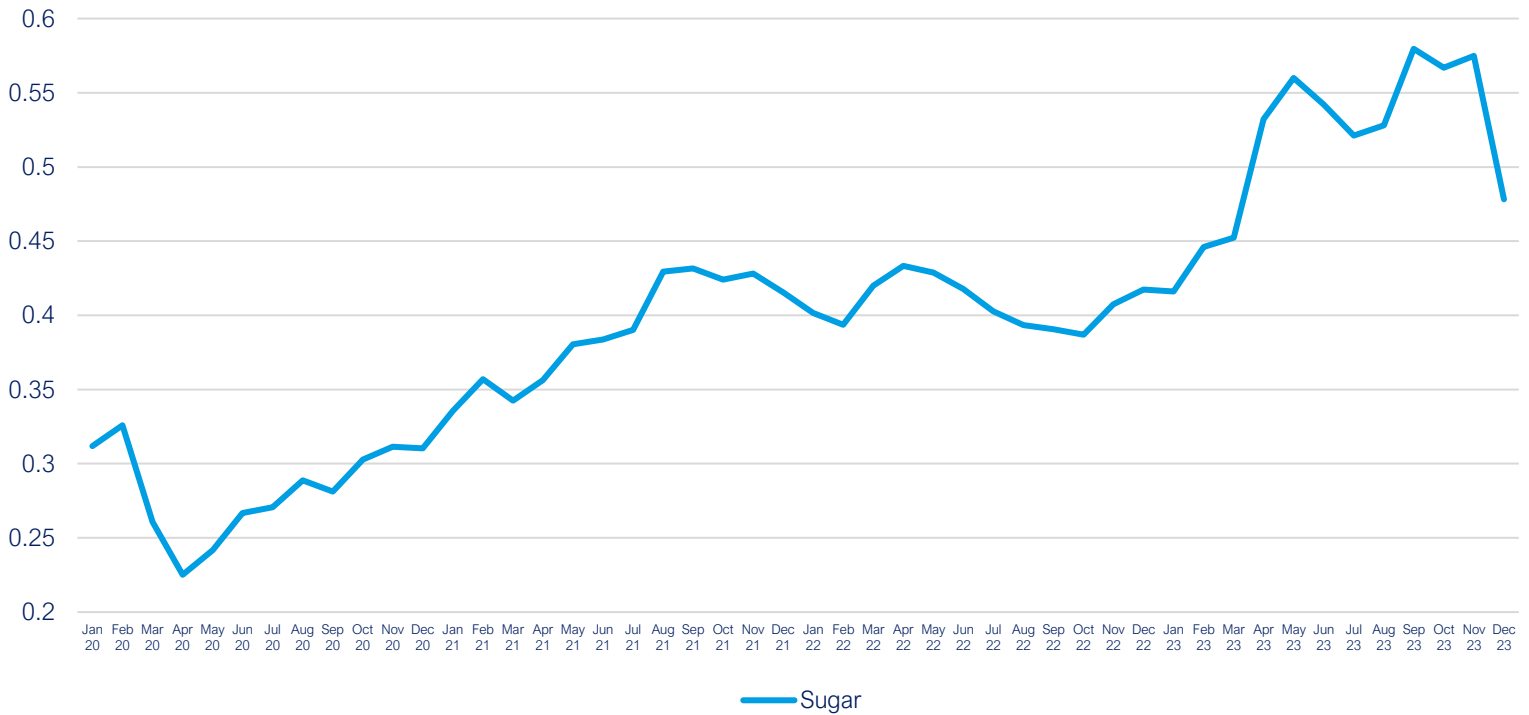


Source: Department for Environment, Food & Rural Affairs

Note: Data for November 2023 will be released on 25 January

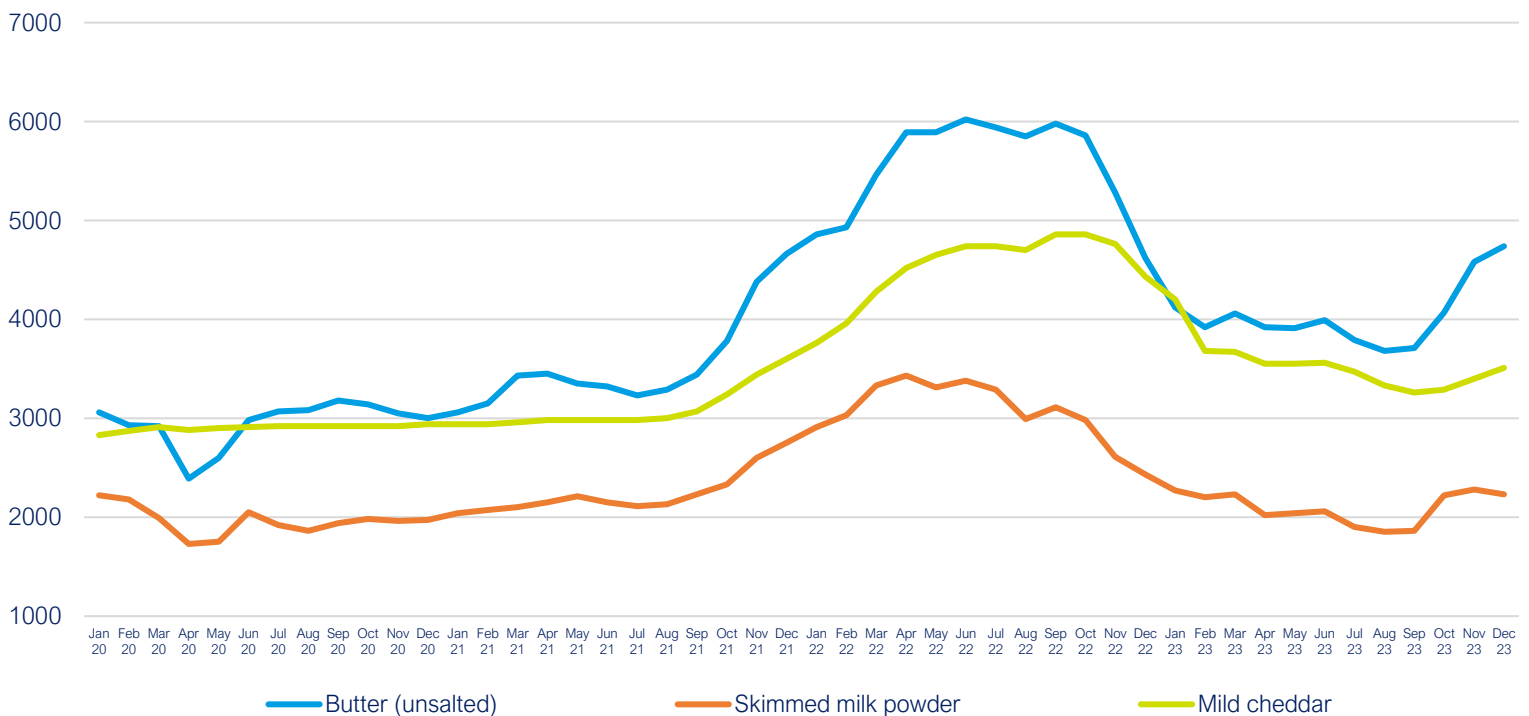
[Back to Title Page](#)

Sugar (\$/kg)



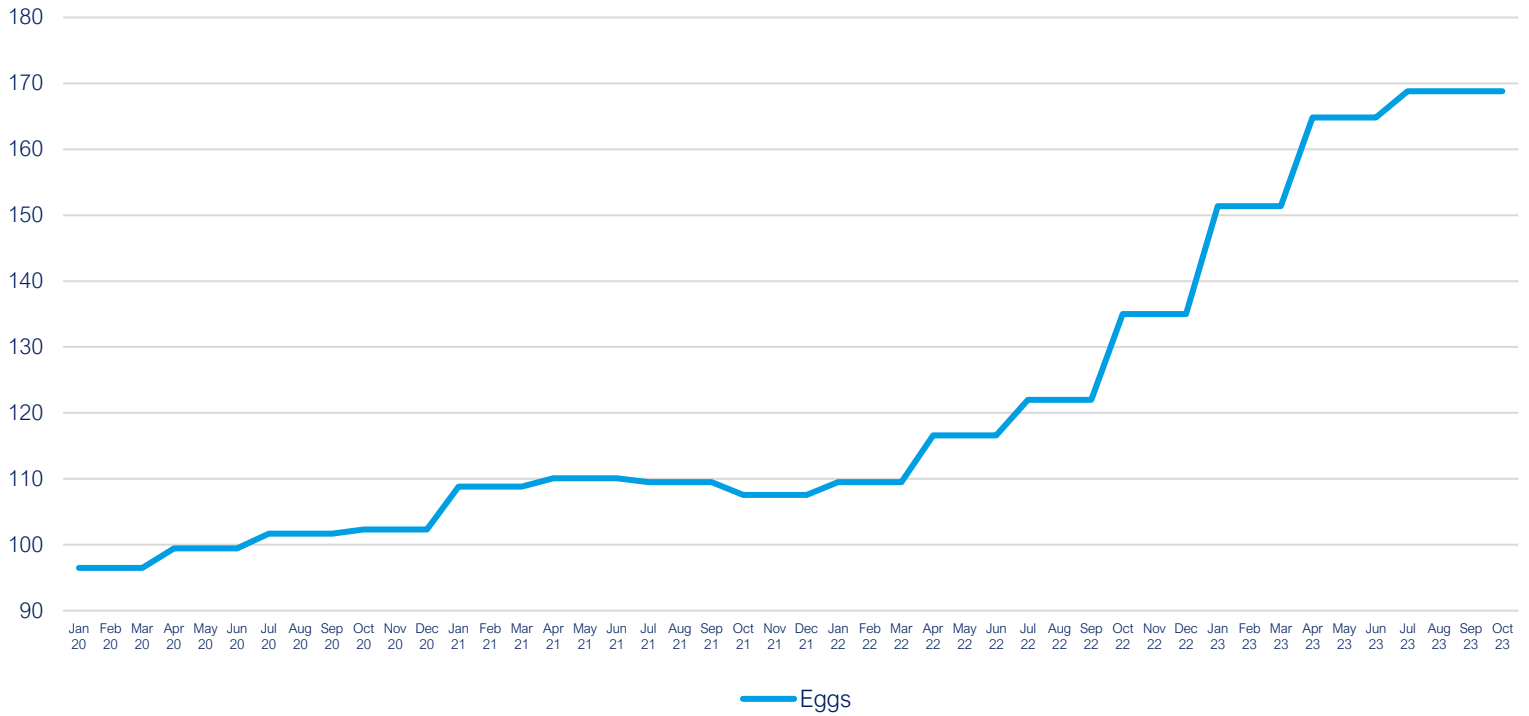
Source: World Bank Commodity Price Data

Butter, mild cheddar and skimmed milk powder (£/tonne)



Source: Agriculture and Horticulture Development Board (AHDB)

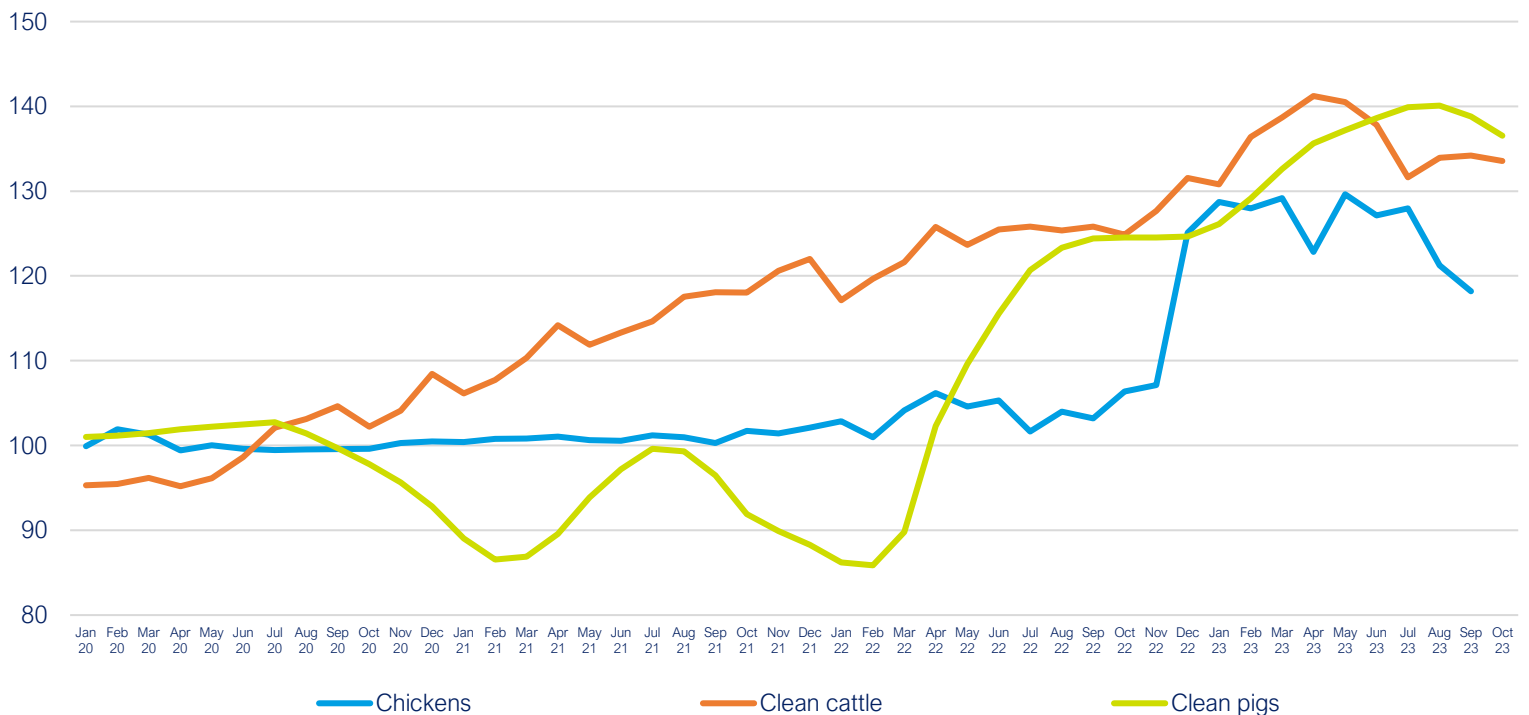
Eggs, 2020 = 100



Source: Department for Environment, Food & Rural Affairs

Note: Data for November 2023 will be released on 25 January

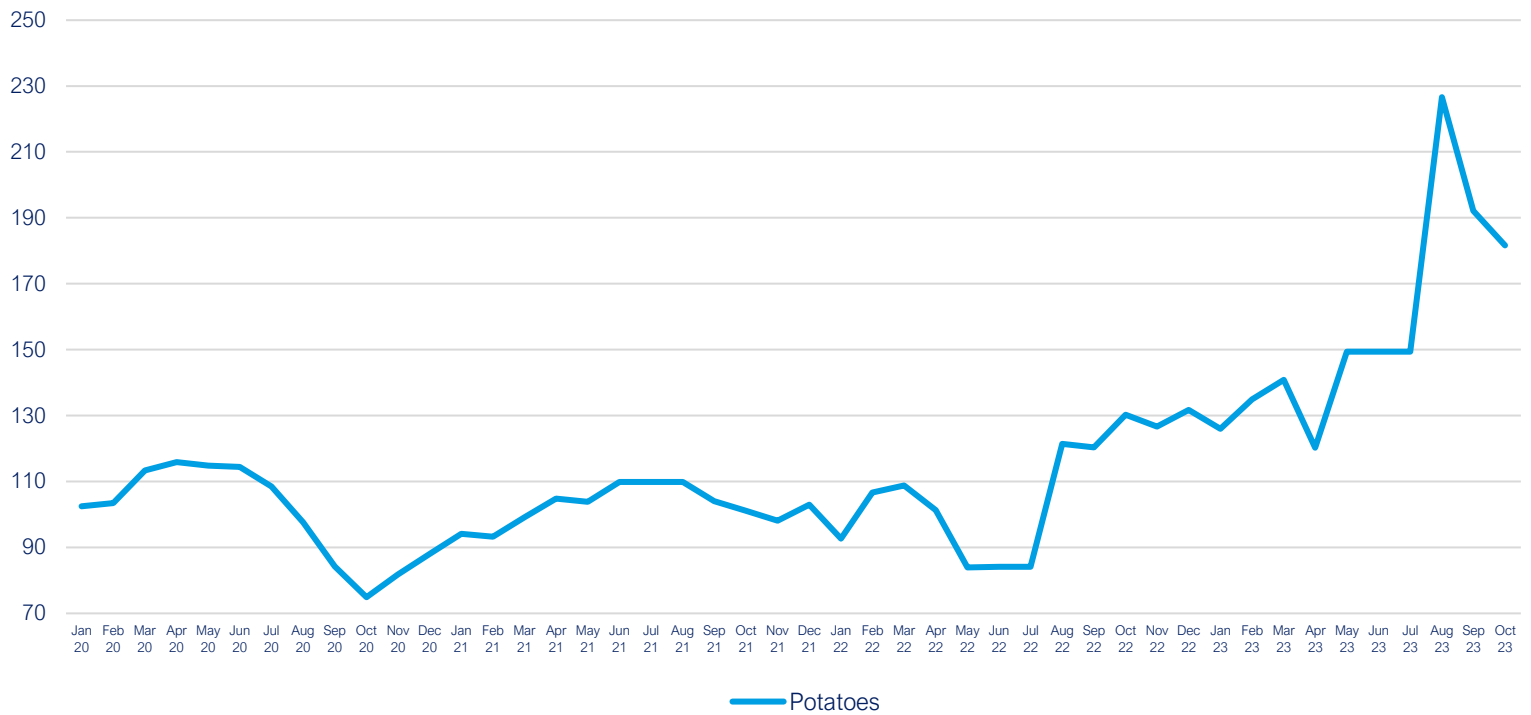
Chicken, beef and pork, 2020 = 100



Source: Department for Environment, Food & Rural Affairs

Note: Data for November 2023 will be released on 25 January

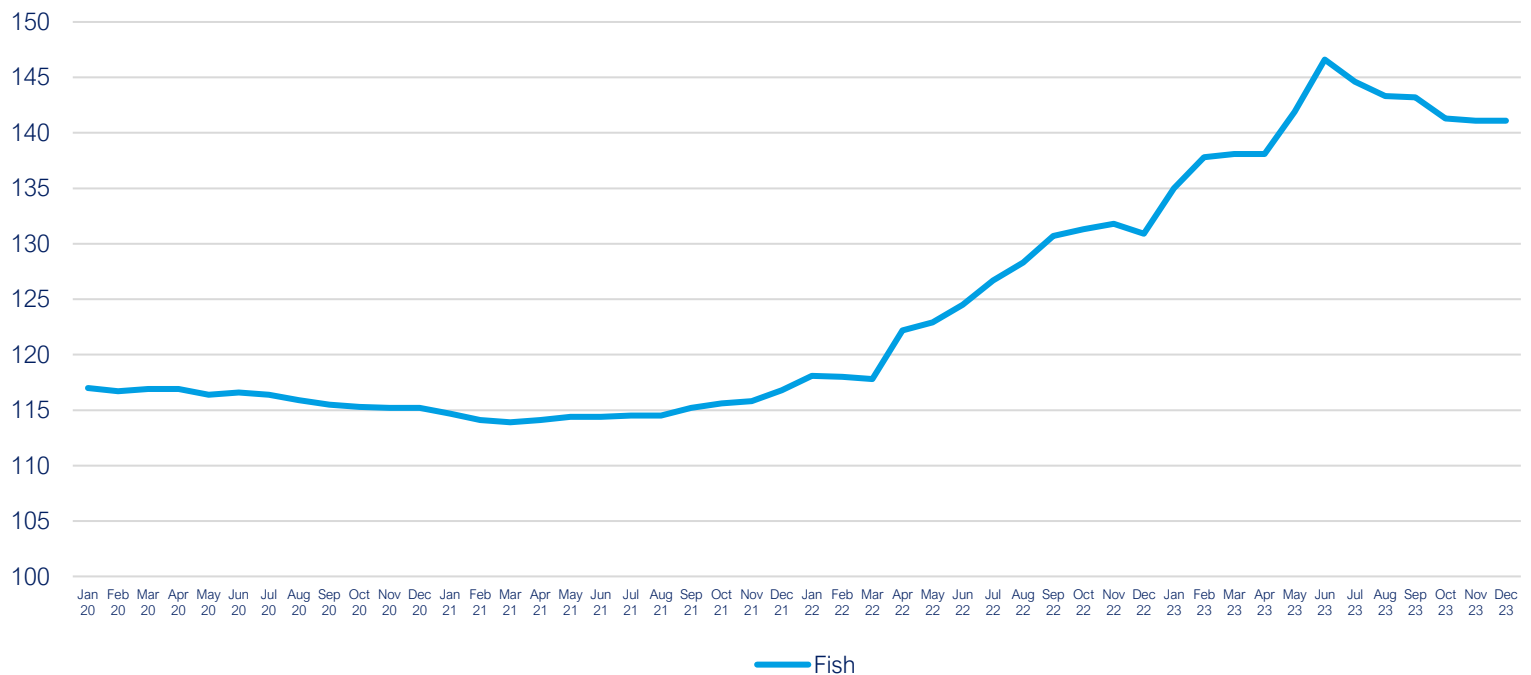
Potatoes, 2020 = 100



Source: Office for National Statistics

Note: Data for November 2023 will be released on 25 January

Preserved and processed fish, crustaceans and molluscs for domestic market, 2015 = 100



Source: Office for National Statistics

Sources

Agriculture and Horticulture Development Board (AHDB), UK Wholesale Prices

Department for Environment, Food & Rural Affairs, Agricultural Price Indices

Eurostat, HICP - monthly data (annual rate of change)

Freightos, Global Container Freight Index (FBX)

Office for National Statistics, Consumer Price Inflation & Producer Price Inflation

The World Bank, Commodity Markets, Monthly Prices

Trading Economics, Commodity Prices

Transport Exchange Group, Road Transport Price Index

About the FDF

The FDF is a powerful voice for the UK's vibrant, resilient and diverse food and drink manufacturing industry. For over 100 years, we have successfully contributed to policy making and legislative development, championing our members' views – large and small – on the critical issues of the day.

We bring together business, government and stakeholders to ensure our manufacturers have the right conditions to grow, invest and employ, while continuing to produce high quality, nutritious and affordable food and drink. With more than 1,000 members – from the most recognisable global brands to the most innovative start-ups – we represent the largest manufacturing sector in the country.

Food and Drink Federation
10 Bloomsbury Way
London
WC1A 2SL

Tel: 020 7836 2460
Email: generalenquiries@fdf.org.uk
Web: fdf.org.uk
Twitter: [@Foodanddrinkfed](https://twitter.com/Foodanddrinkfed)

fdf food & drink
federation
passionate about food & drink