



Category		Value	Monthly change, %	Yearly change, %
<b>UK food and non-alcoholic drink inflation (CPIH)</b>				
UK food	Index	134.8	▼ - 0.4%	▲ 7.1%
UK non-alcoholic drink	Index	135.6	▼ - 0.6%	▲ 6.4%
<b>UK producer prices (PPI)</b>				
Input prices: domestic food	Index	142.9	— 0.0%	▼ - 2.1%
Input prices: imported food	Index	172.4	▼ - 0.5%	▲ 4.5%
Output prices: food for domestic market	Index	133.1	— 0.0%	▲ 0.5%
<b>Energy prices and transportation</b>				
Crude oil, brent (\$/bbl)	Price	80	▲ 3.0%	▼ - 3.4%
Natural gas (\$/mmbtu)	Price	10	▼ - 16.9%	▼ - 52.6%
UK natural gas (£/thm)	Price	74.3	▼ - 7.9%	▼ - 48.9%
Shipping container rates	Index	2909.2	▲ 126.6%	▲ 32.3%
UK haulage	Index	116.2	▼ - 2.1%	▼ - 8.5%
Fertiliser	Index	161.0	▼ - 1.0%	▼ - 50.5%
<b>Packaging</b>				
Paper and paperboard	Index	131.8	▼ - 0.5%	▼ - 7.7%
Wooden containers	Index	144.6	— 0.0%	▼ - 8.1%
Aluminium (\$/mt)	Price	2,193	▲ 0.5%	▼ - 12.4%
<b>Agricultural raw materials</b>				
Sunflower oil (\$/mt)	Price	943	▼ - 0.1%	▼ - 29.1%
Rapeseed oil (\$/mt)	Price	972	▼ - 3.8%	▼ - 20.6%
Palm oil (\$/mt)	Price	845	▲ 3.9%	▼ - 10.3%
Wheat, US HRW (\$/mt)	Price	284	▼ - 2.5%	▼ - 25.4%
Maize (\$/mt)	Price	198	▼ - 3.8%	▼ - 34.4%
Rice (\$/mt)	Price	660	▲ 2.5%	▲ 27.7%
Soybeans (\$/mt)	Price	547	— 0.0%	▼ - 12.6%
Feed wheat (UK)	Index	116	▲ 0.6%	▼ - 28.7%
Sugar (\$/kg)	Price	0.49	▲ 1.3%	▲ 16.5%
Cheese (£/tonne)	Price	3,600	▲ 2.6%	▼ - 2.2%
Butter (£/tonne)	Price	4,750	▲ 0.2%	▲ 15.3%
Skimmed milk powder (£/tonne)	Price	2,170	▼ - 2.7%	▼ - 4.4%
Eggs (UK)	Index	168.2	— 0.0%	▲ 24.6%
Beef (UK)	Index	141.3	▲ 3.5%	▲ 7.5%
Chicken (UK)	Index	121.9	▲ 1.8%	▲ 13.8%
Pork (UK)	Index	133.4	▼ - 1.0%	▲ 7.0%
Potatoes (UK)	Index	199.5	▲ 2.3%	▲ 51.5%
Fish (UK)	Index	140.2	▼ - 0.6%	▲ 3.9%

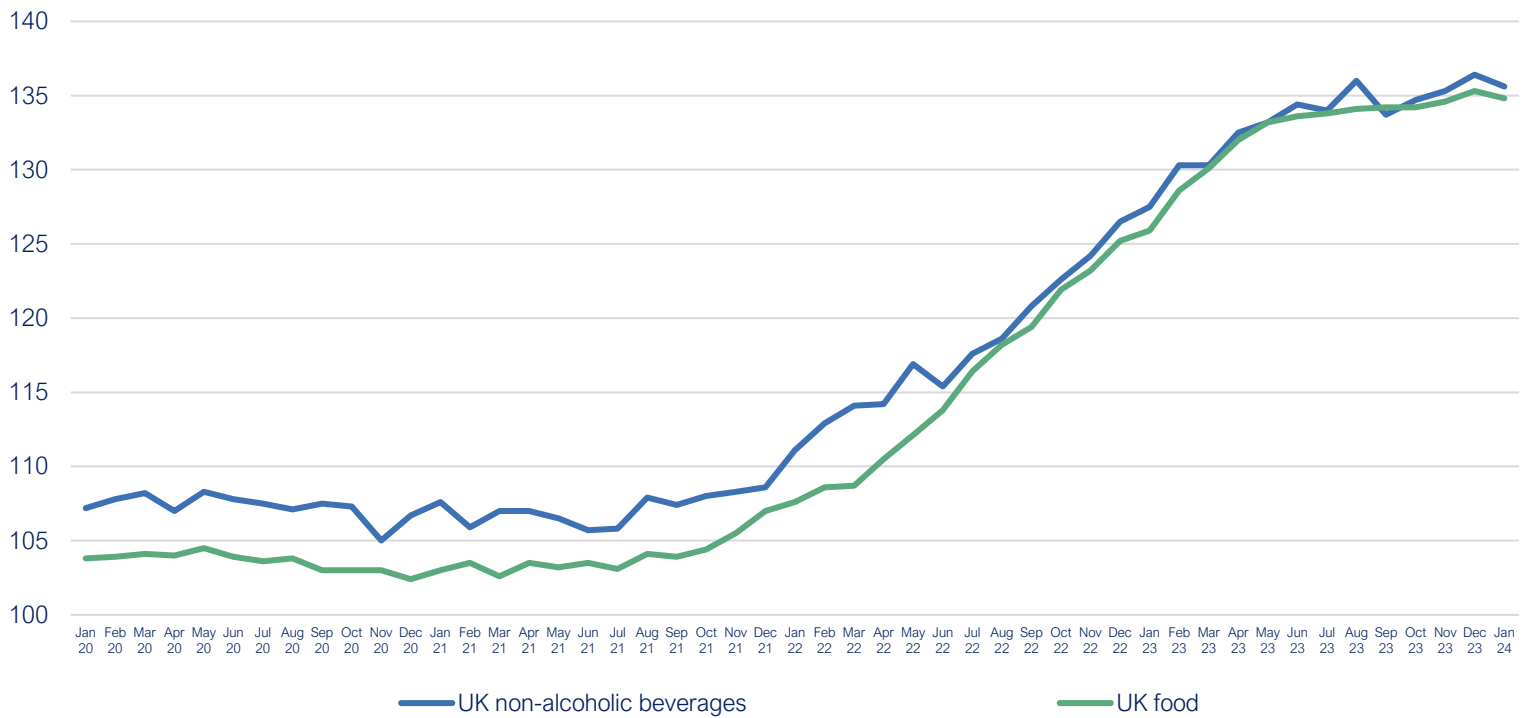
## Prices Dashboard

Data up to January 2024

[Back to Title Page](#)

### UK food and non-alcoholic drink inflation (CPIH)

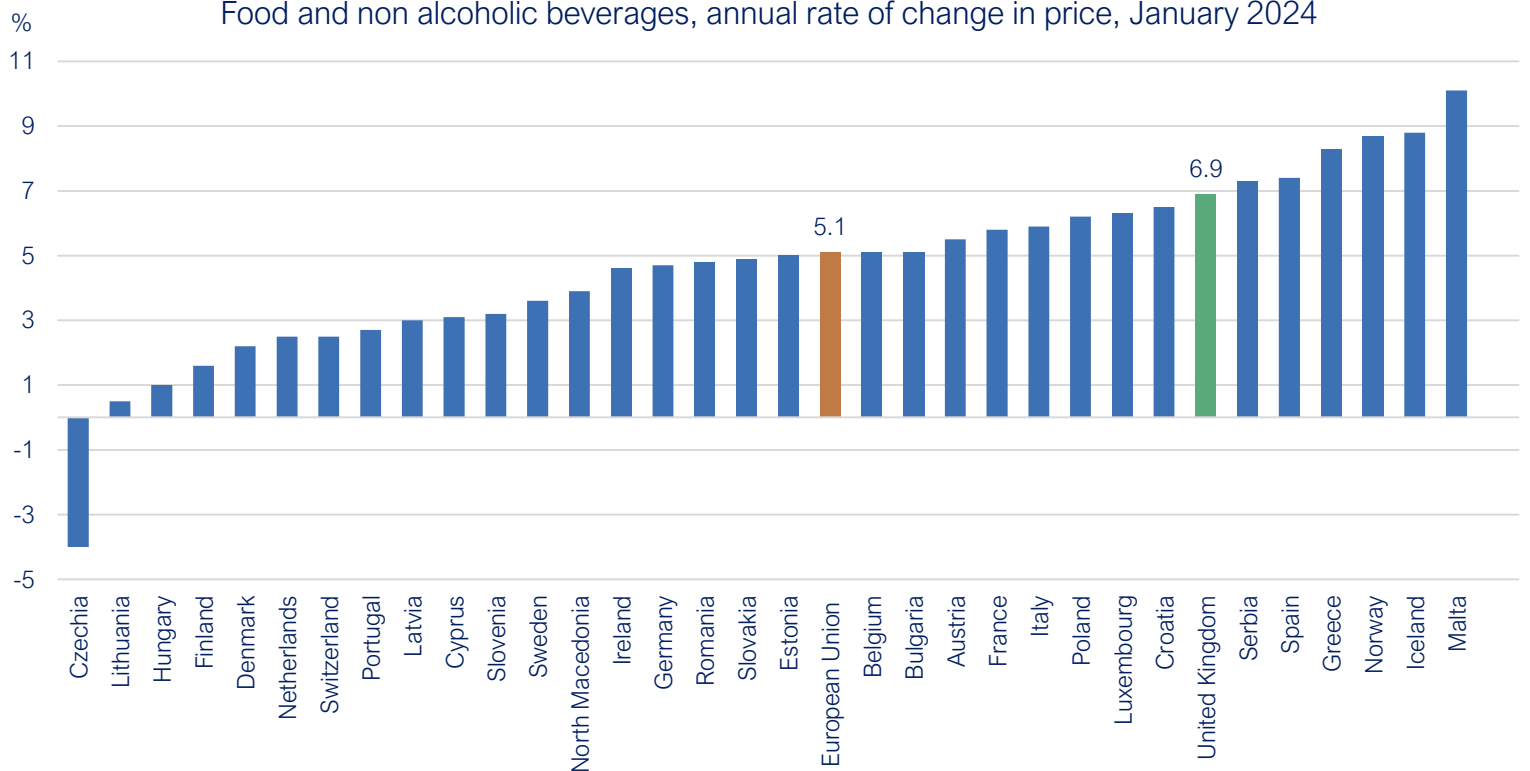
UK food and UK non-alcoholic beverages, 2015=100



Source: Office for National Statistics

### Food and drink inflation comparison with Europe

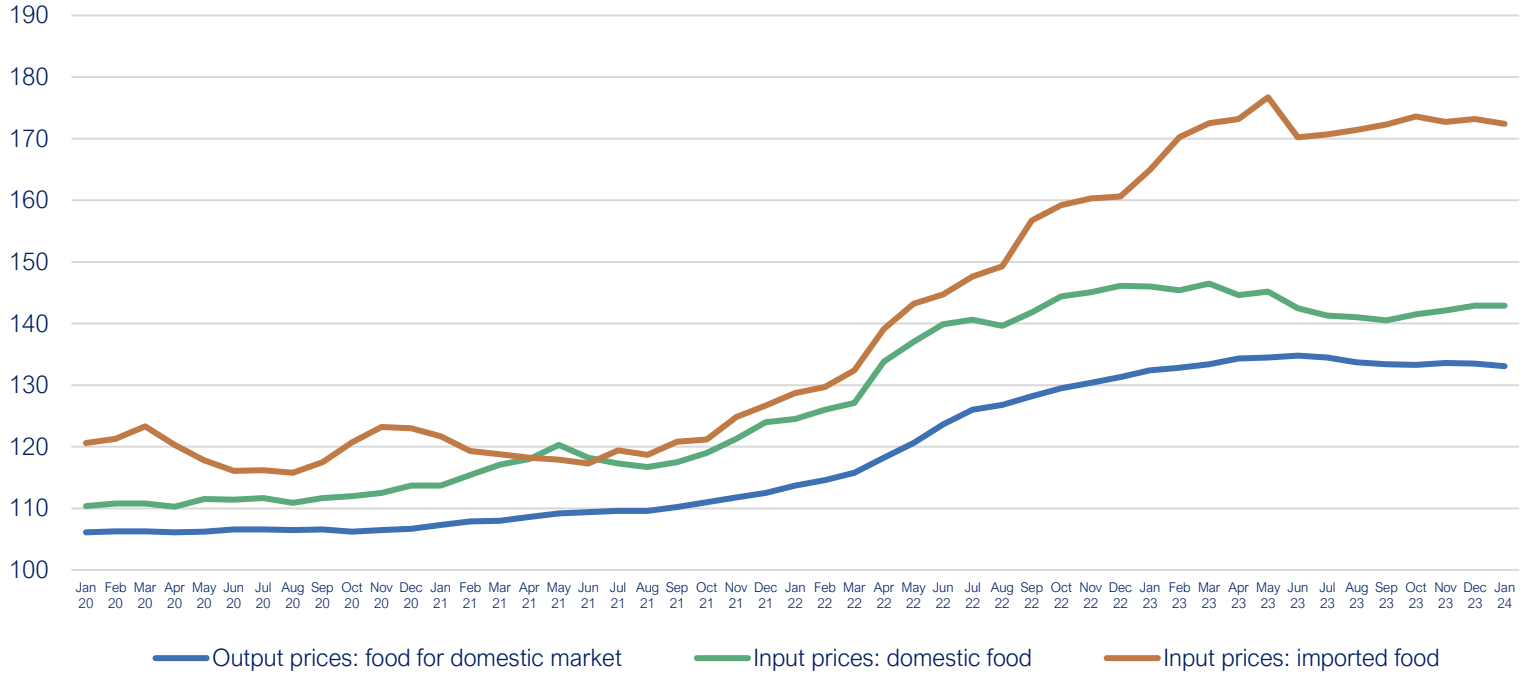
Food and non alcoholic beverages, annual rate of change in price, January 2024



Source: Eurostat

## UK producer prices (PPI)

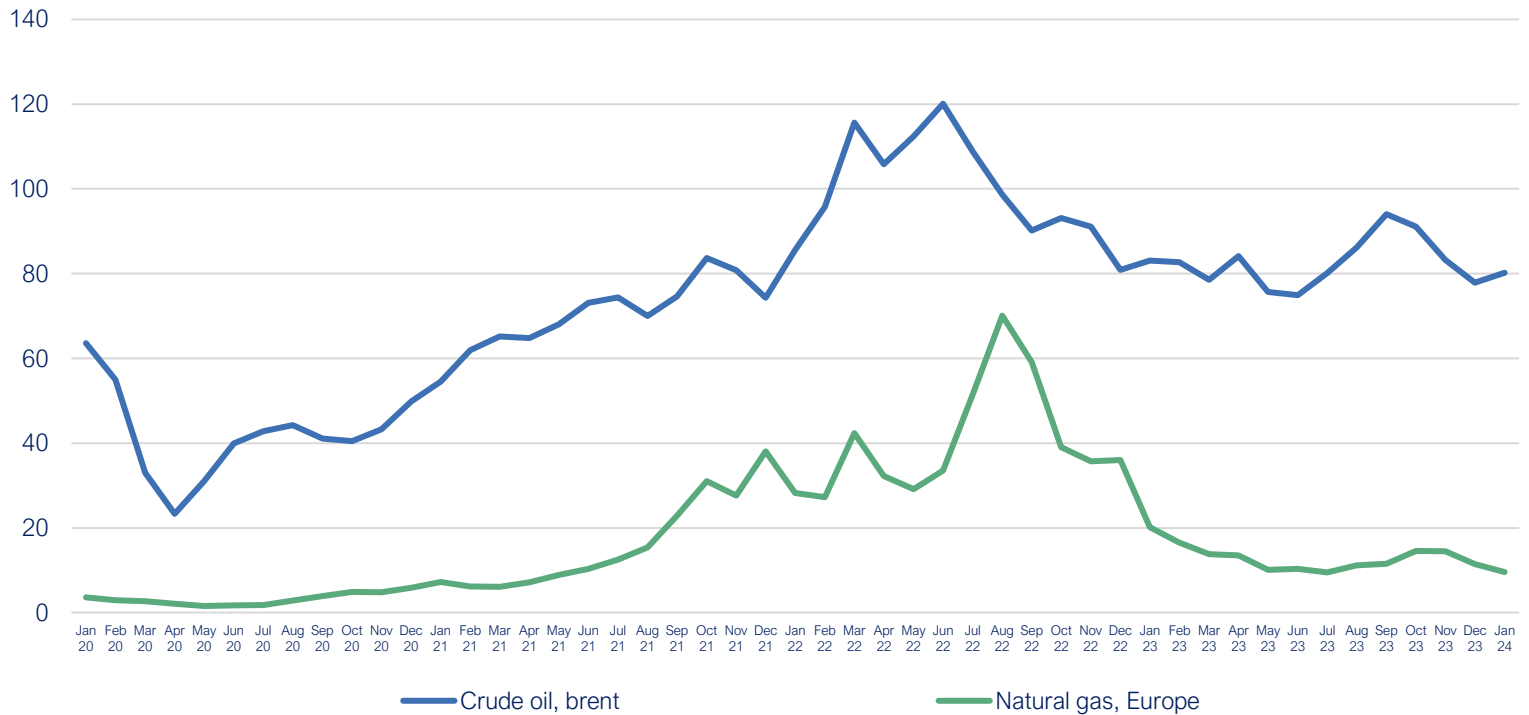
Input prices (domestic food), input prices (imported food), output prices (food for domestic market), 2015 = 100



Source: Office for National Statistics

## Energy prices and transportation

Crude oil (\$/bbl) and natural gas (\$/mmbtu)

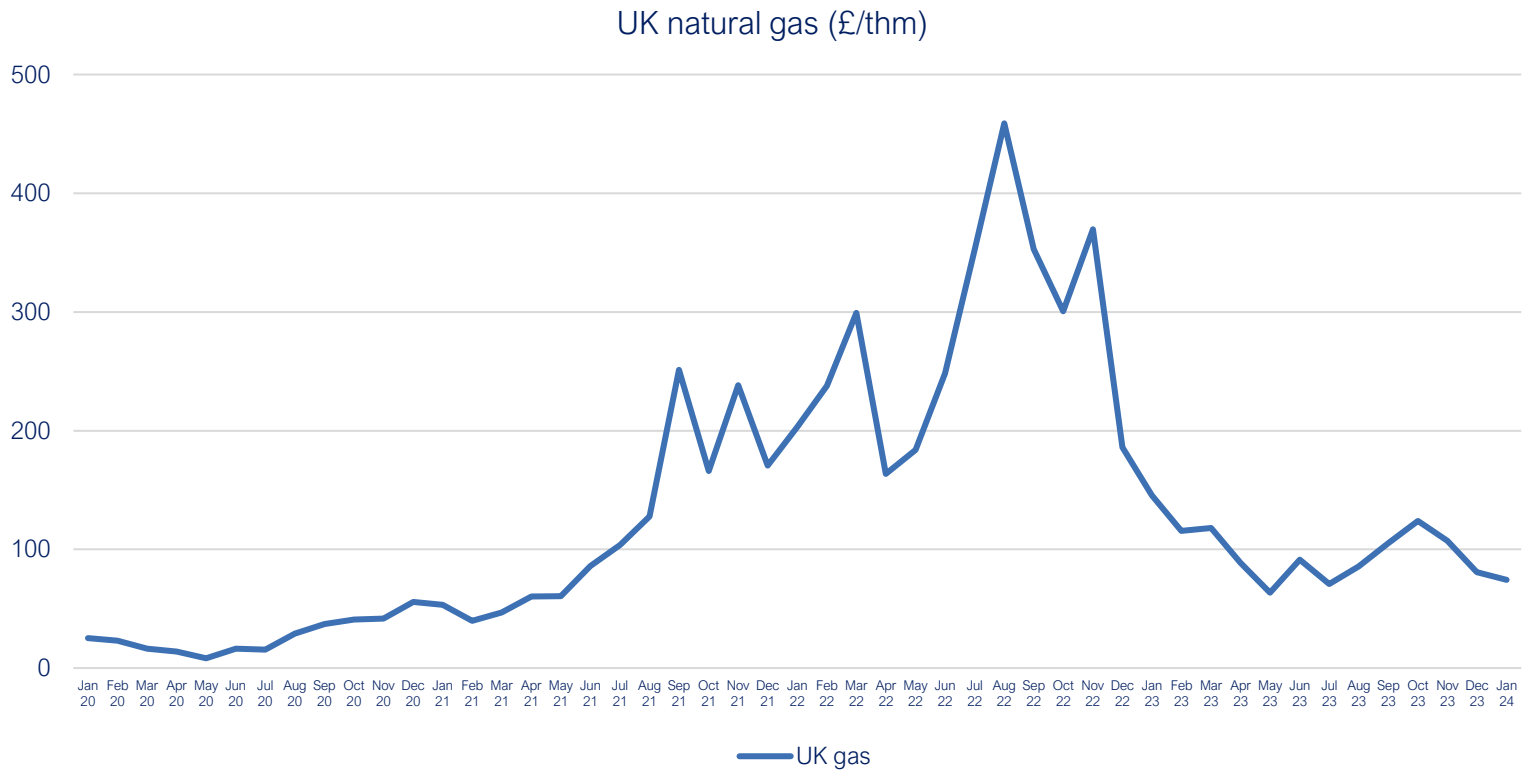


Source: World Bank Commodity Price Data

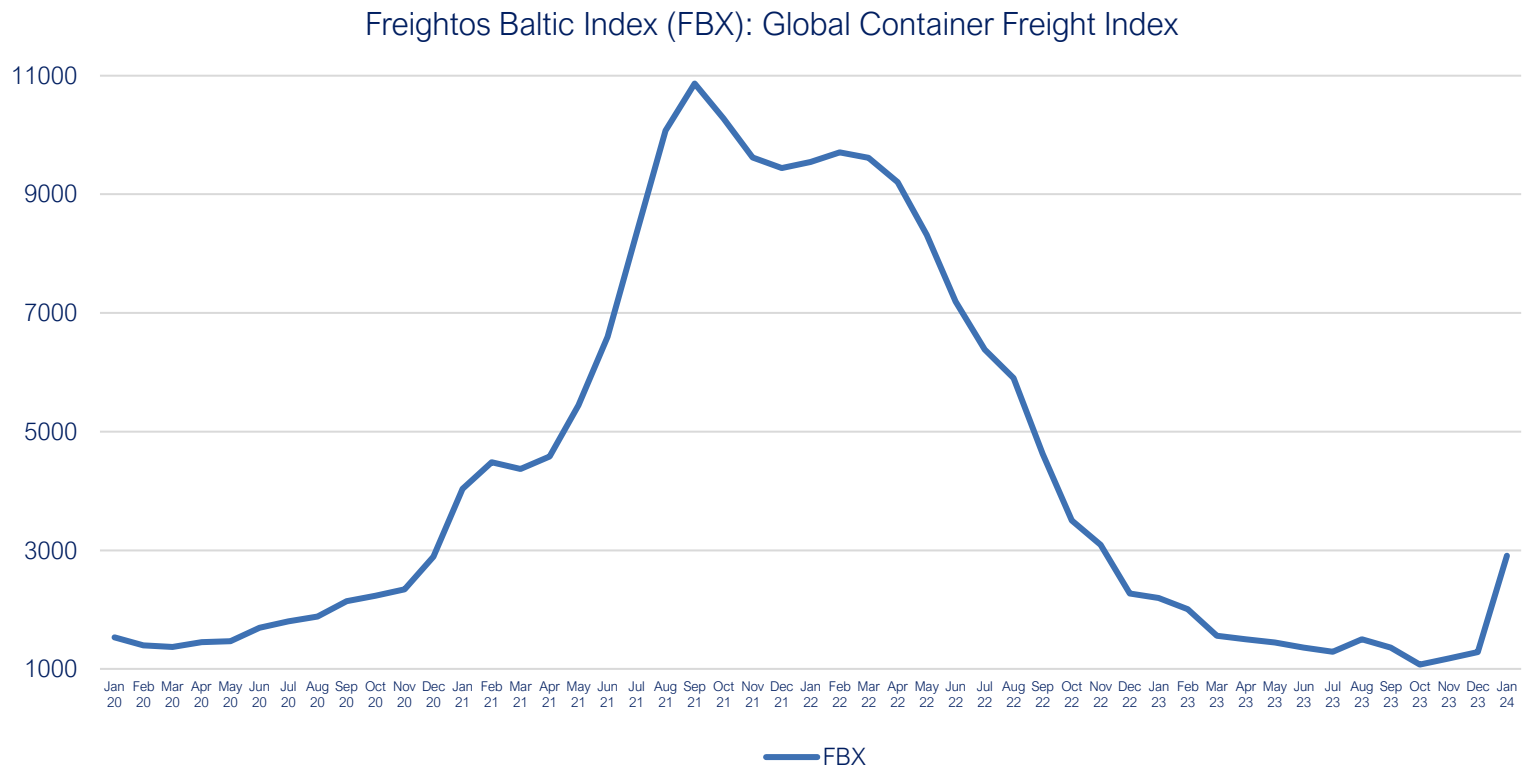
## Prices Dashboard

Data up to January 2024

[Back to Title Page](#)



Source: Trading Economics



Source: Freightos, Global Container Index

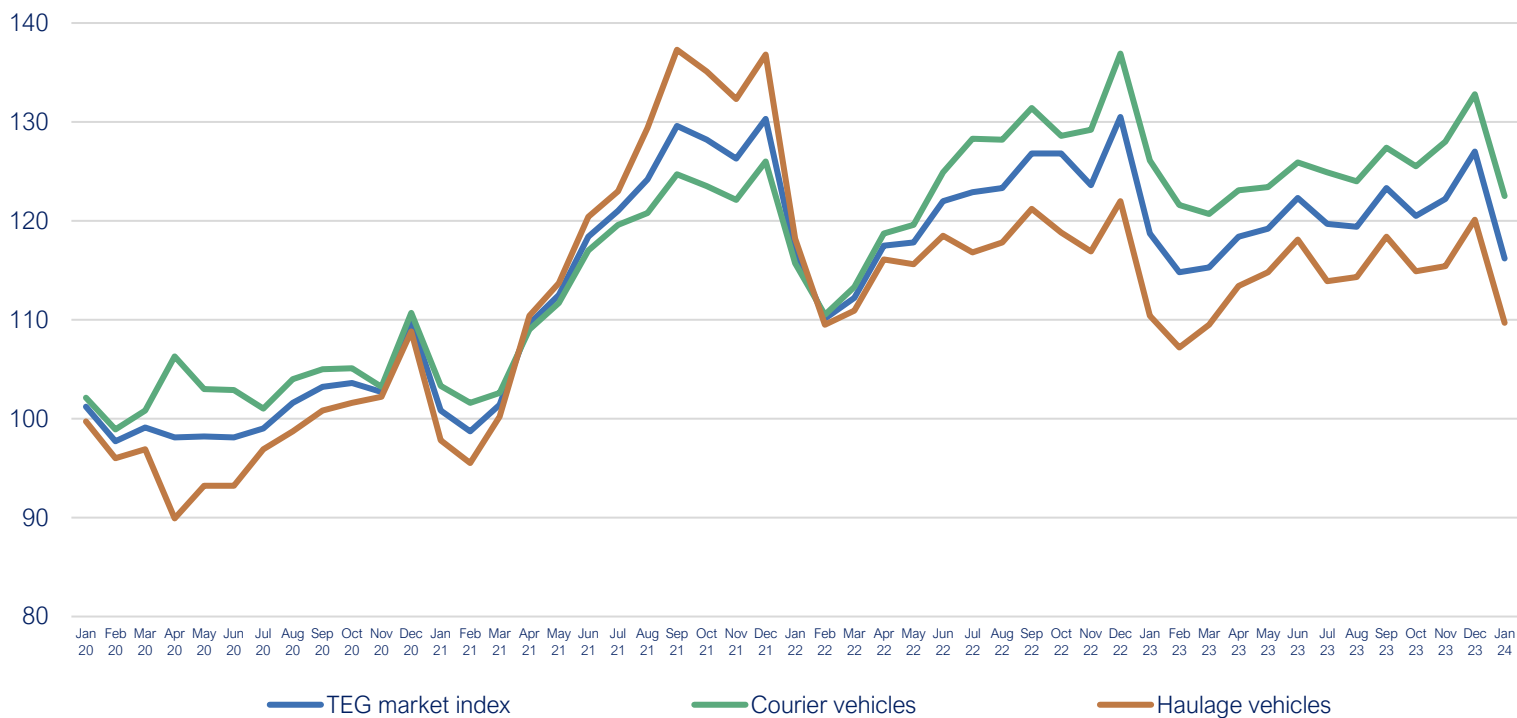
Note: Each monthly index value is an average of the weekly index values of that month

# Prices Dashboard

Data up to January 2024

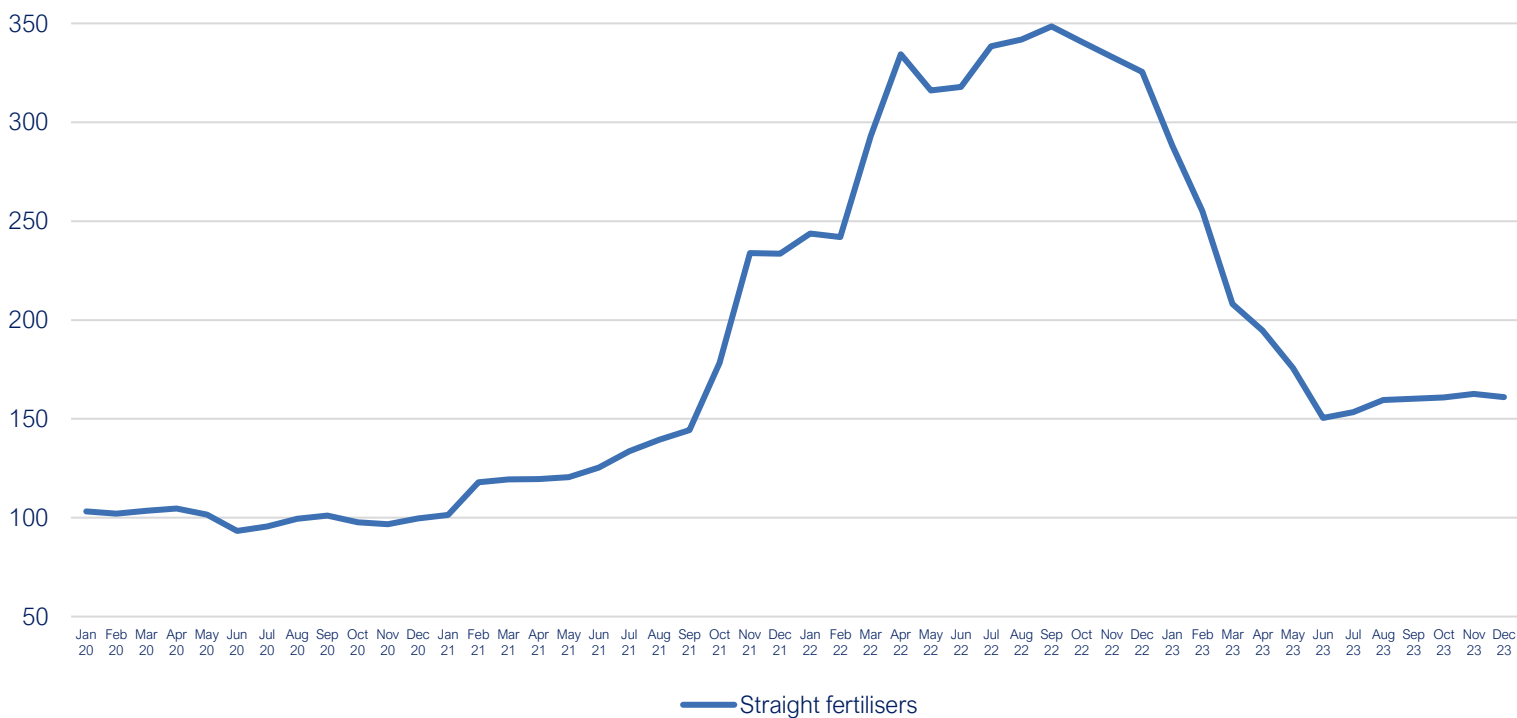
[Back to Title Page](#)

UK haulage, Jan 2019 = 100



Source: Transport Exchange Group

Straight fertilisers, 2020 = 100



Source: Department for Environment, Food & Rural Affairs

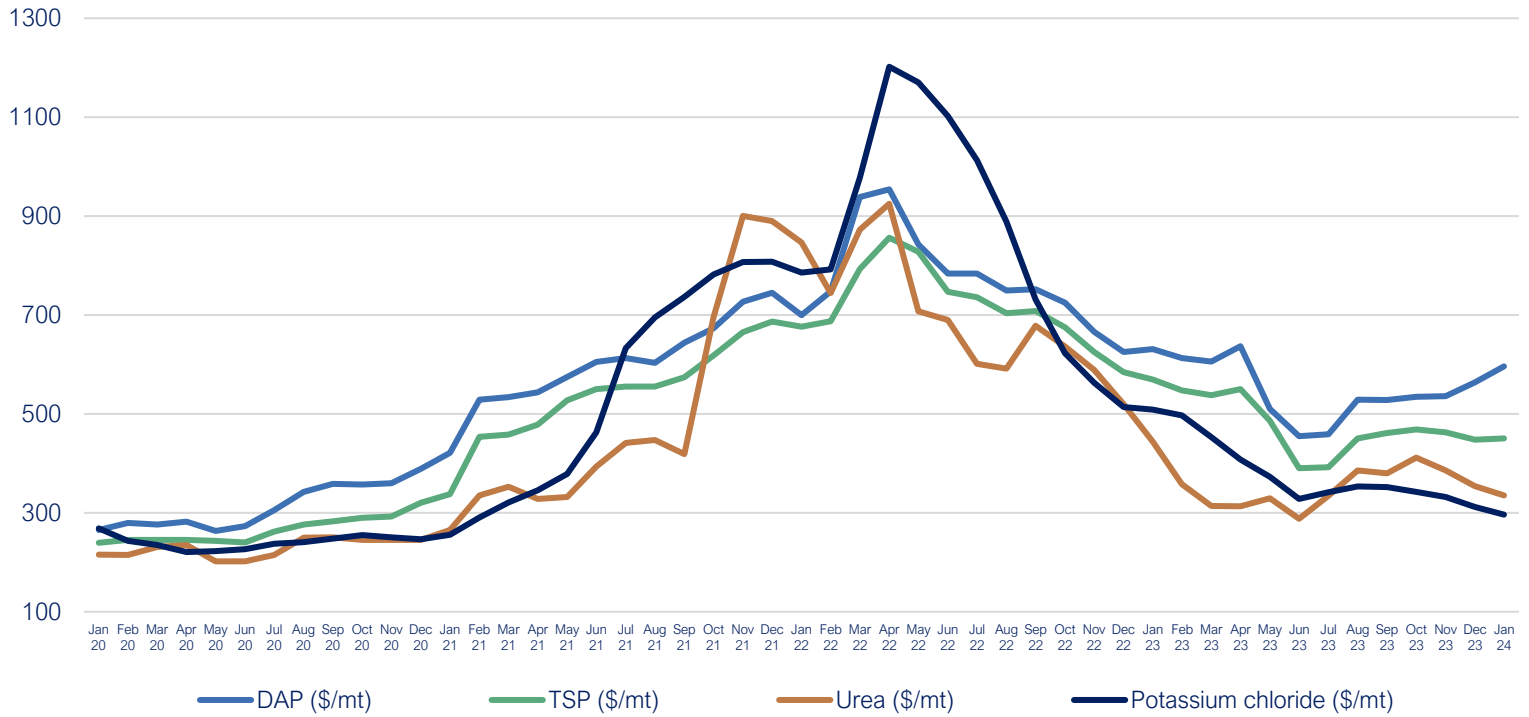
Note: This data is only available to December 2023.

## Prices Dashboard

Data up to January 2024

[Back to Title Page](#)

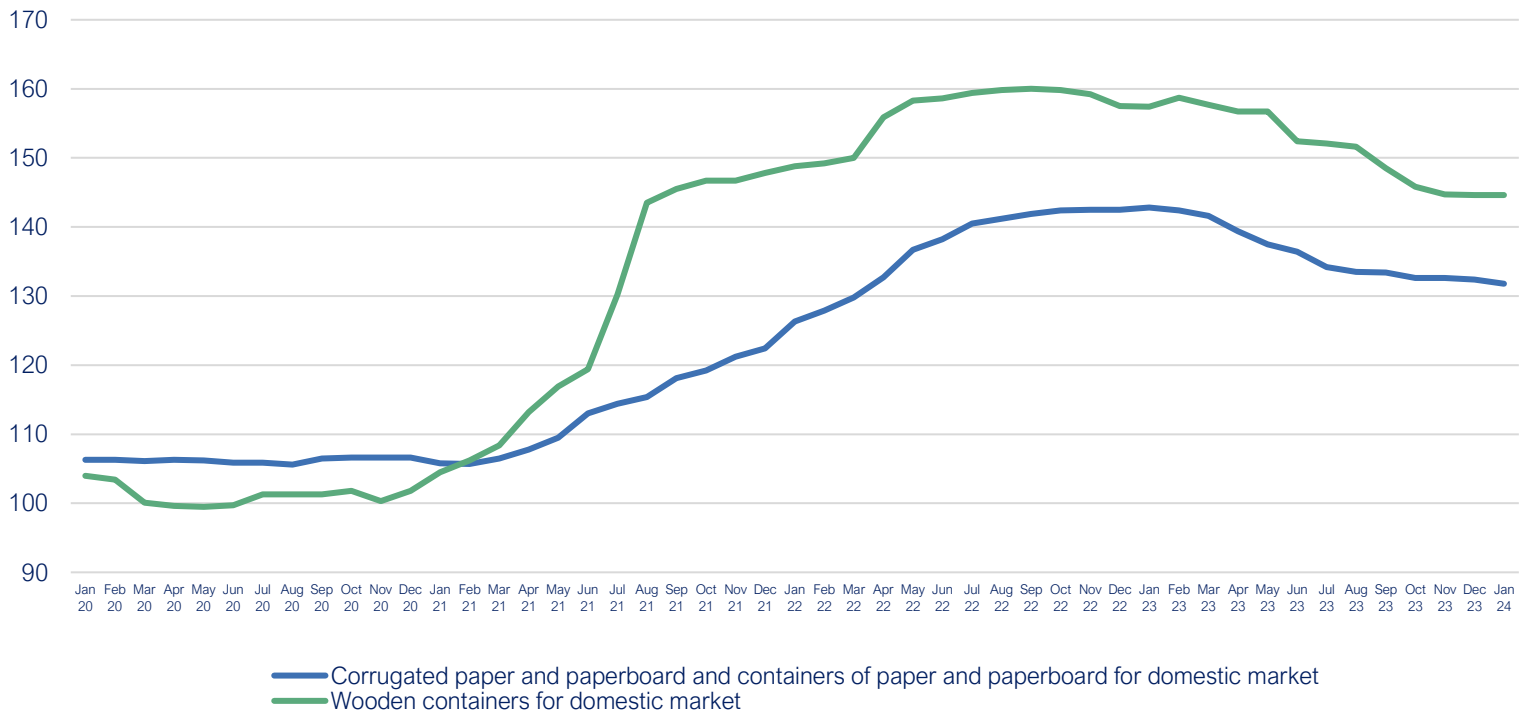
DAP, TSP, Urea, Potassium Chloride, (\$/mt)



Source: World Bank Commodity Price Data

## Packaging

Packaging, 2015 = 100

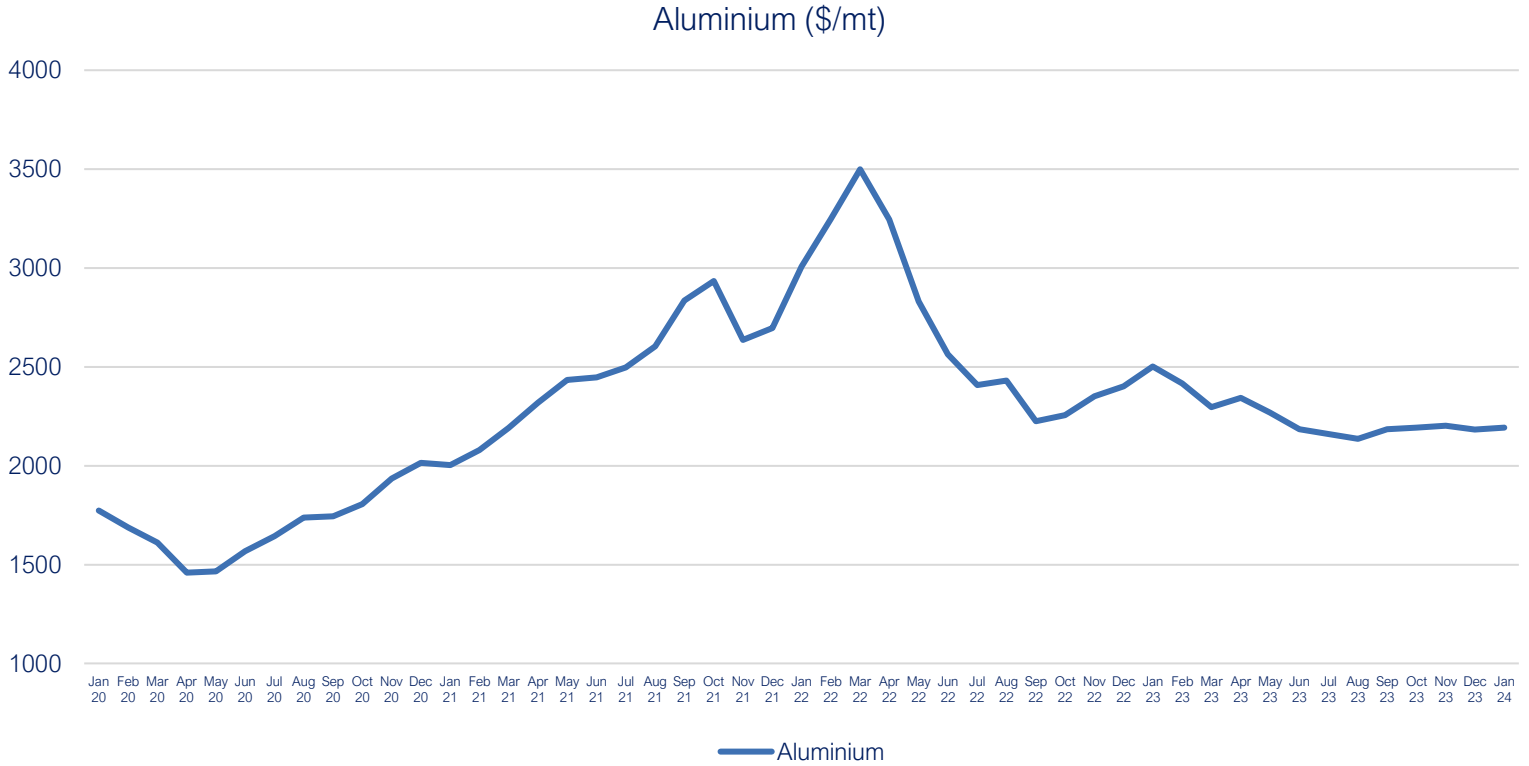


Source: Office for National Statistics

## Prices Dashboard

Data up to January 2024

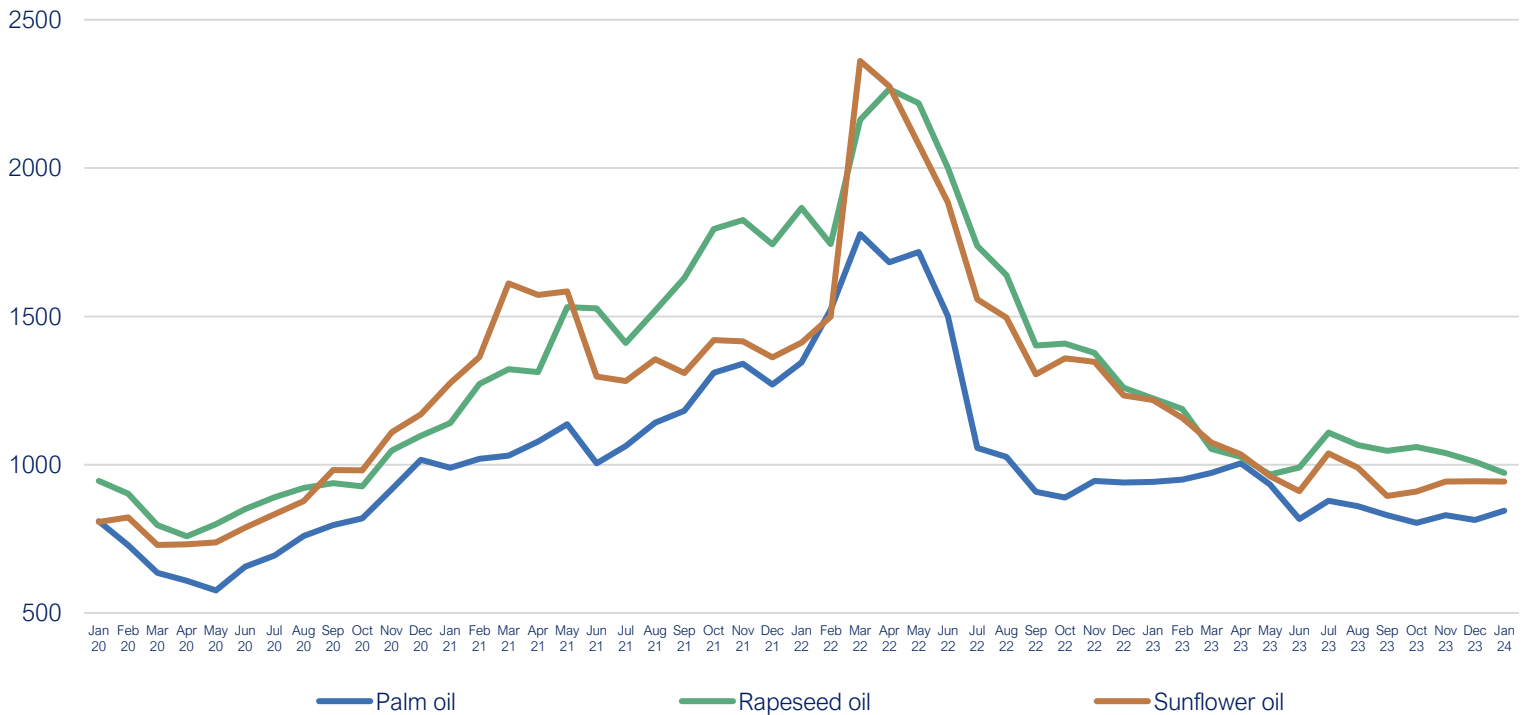
[Back to Title Page](#)



Source: World Bank Commodity Price Data

## Agricultural raw materials

### Palm oil, rapeseed oil and sunflower oil (\$/mt)



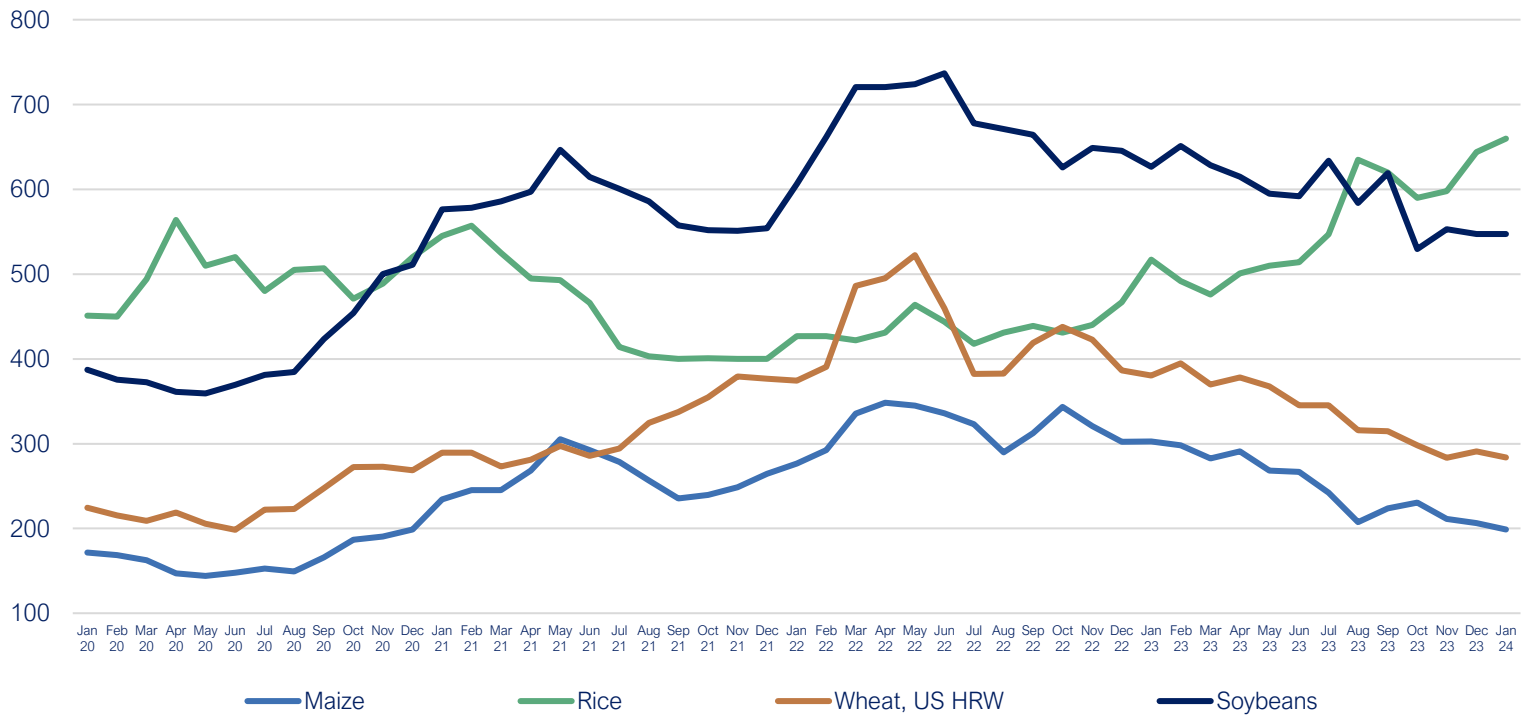
Source: World Bank Commodity Price Data

# Prices Dashboard

Data up to January 2024

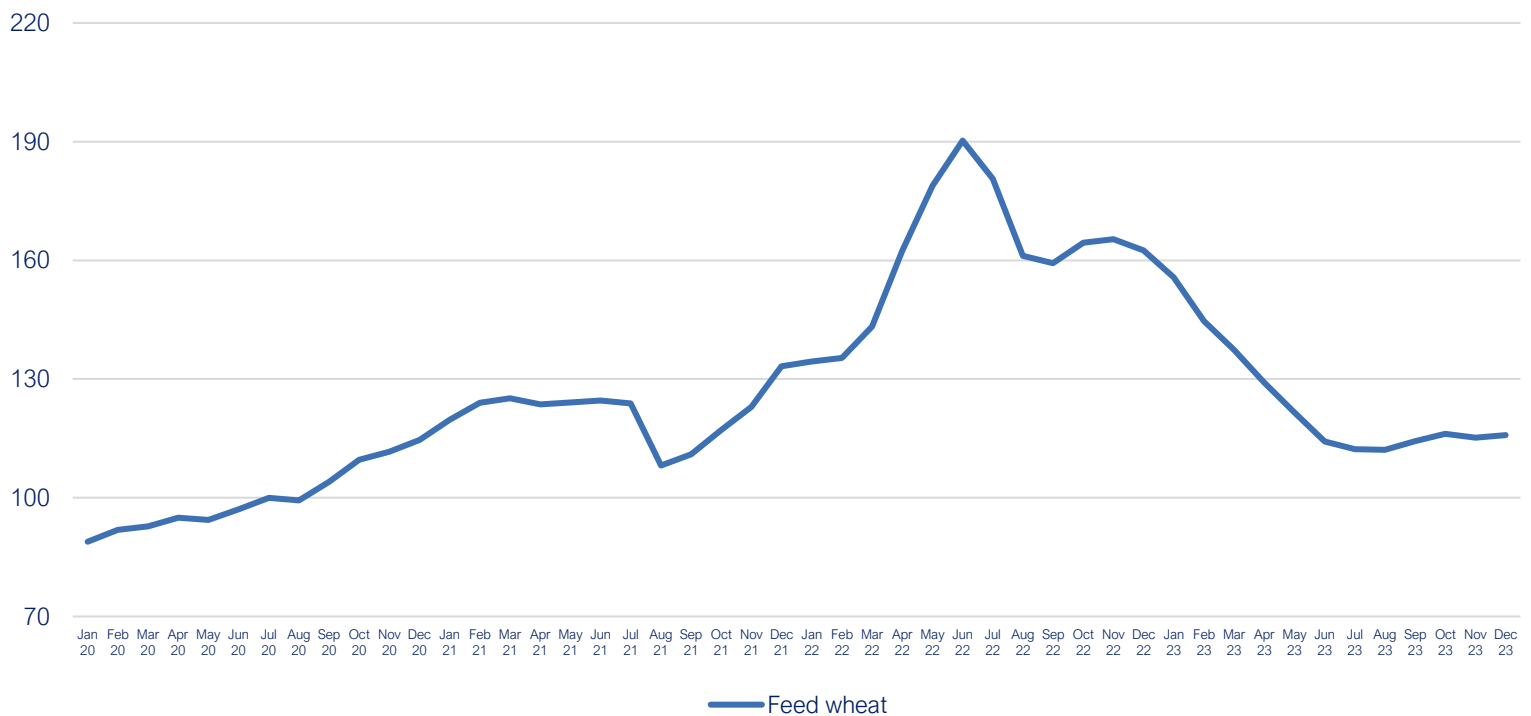
[Back to Title Page](#)

Maize, rice, wheat and soybeans (\$/mt)



Source: World Bank Commodity Price Data

Feed wheat, 2020 = 100



Source: Department for Environment, Food & Rural Affairs

Note: This data is only available to December 2023

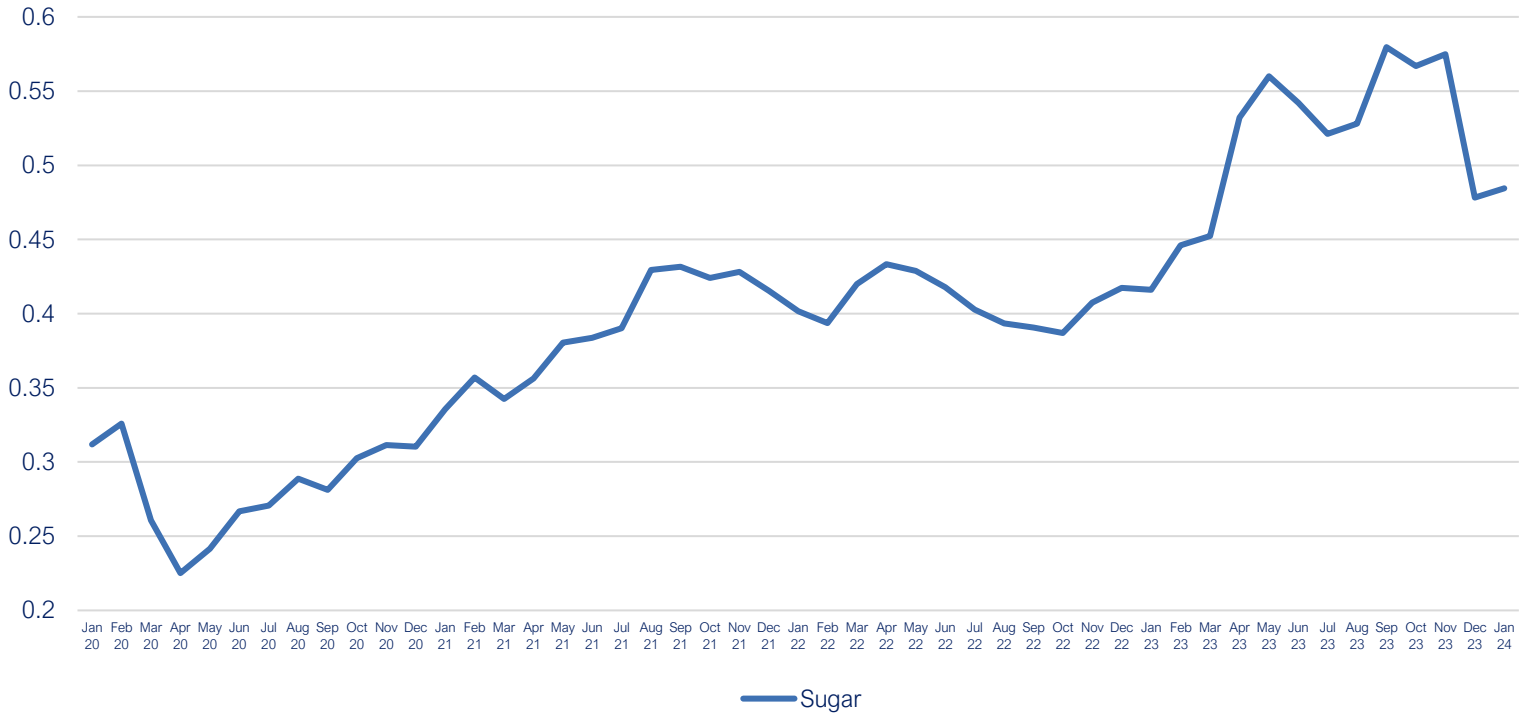


# Prices Dashboard

Data up to January 2024

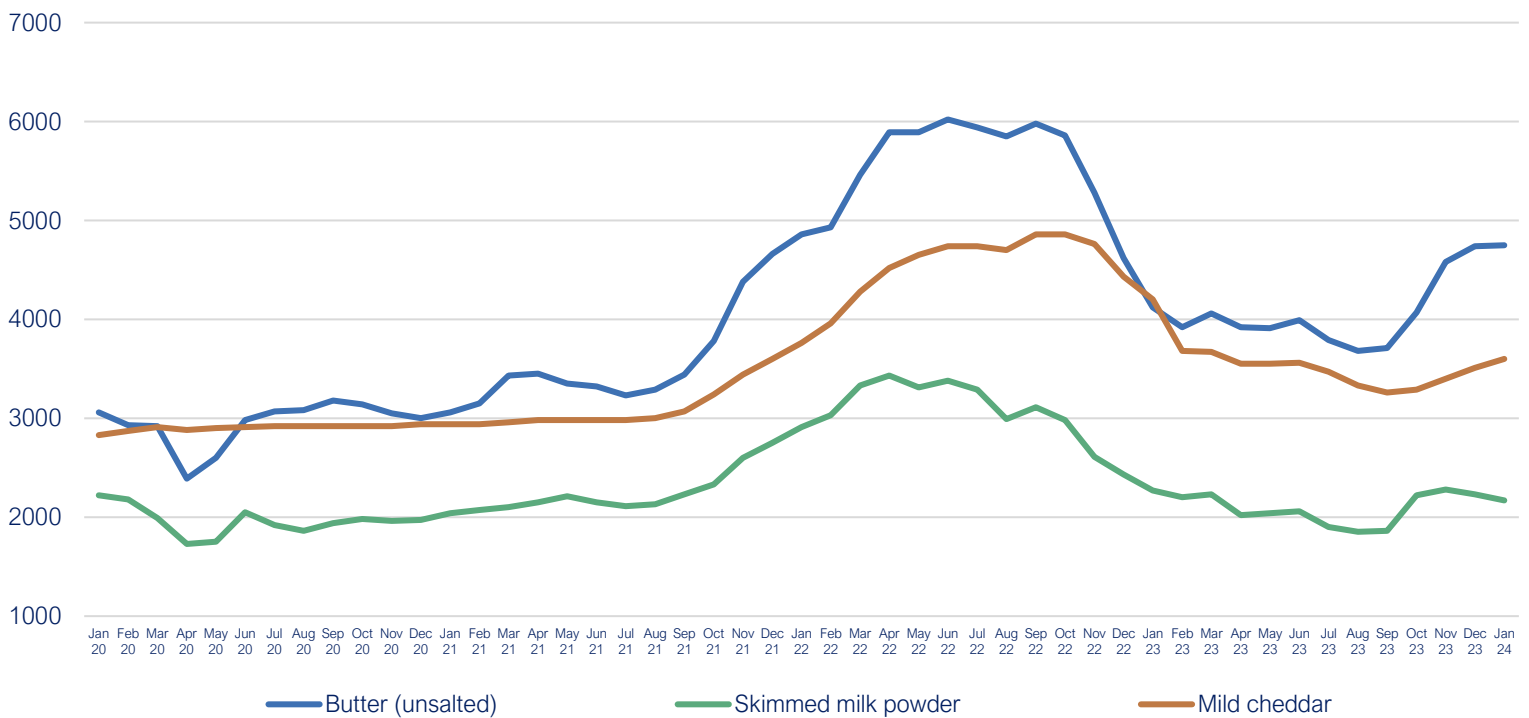
[Back to Title Page](#)

## Sugar (\$/kg)



Source: World Bank Commodity Price Data

## Butter, mild cheddar and skimmed milk powder (£/tonne)



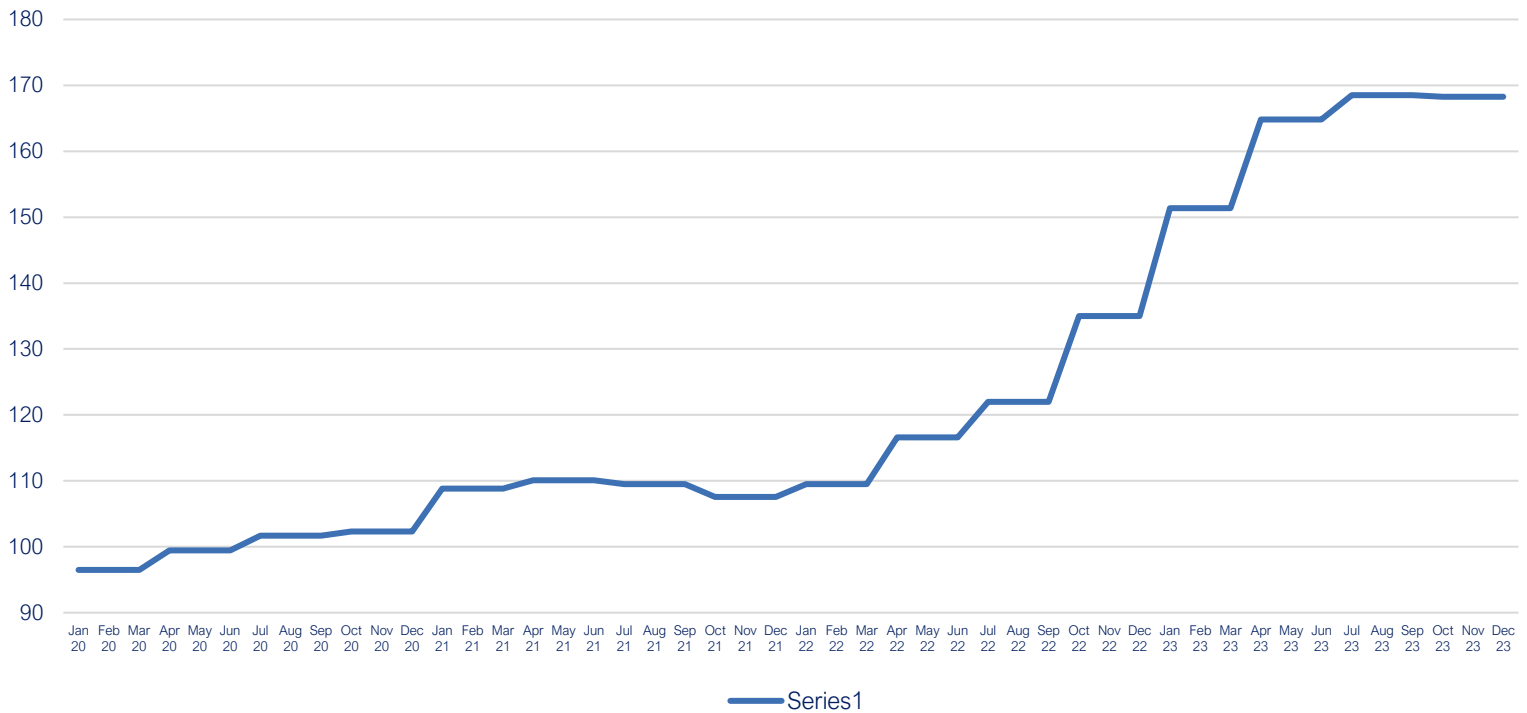
Source: Agriculture and Horticulture Development Board (AHDB)

## Prices Dashboard

Data up to January 2024

[Back to Title Page](#)

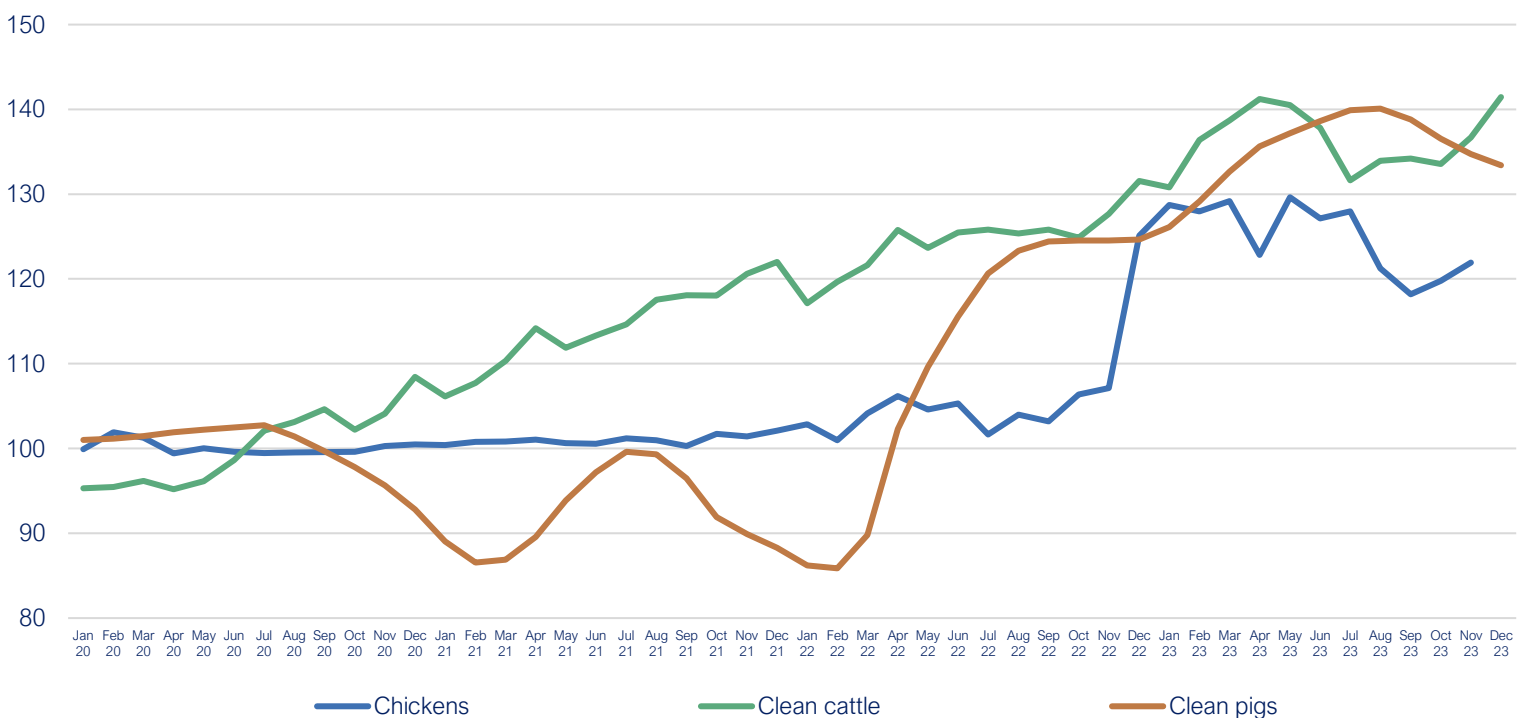
Eggs, 2020 = 100



Source: Department for Environment, Food & Rural Affairs

Note: This data is only available to December 2023

Chicken, beef and pork, 2020 = 100



Source: Department for Environment, Food & Rural Affairs

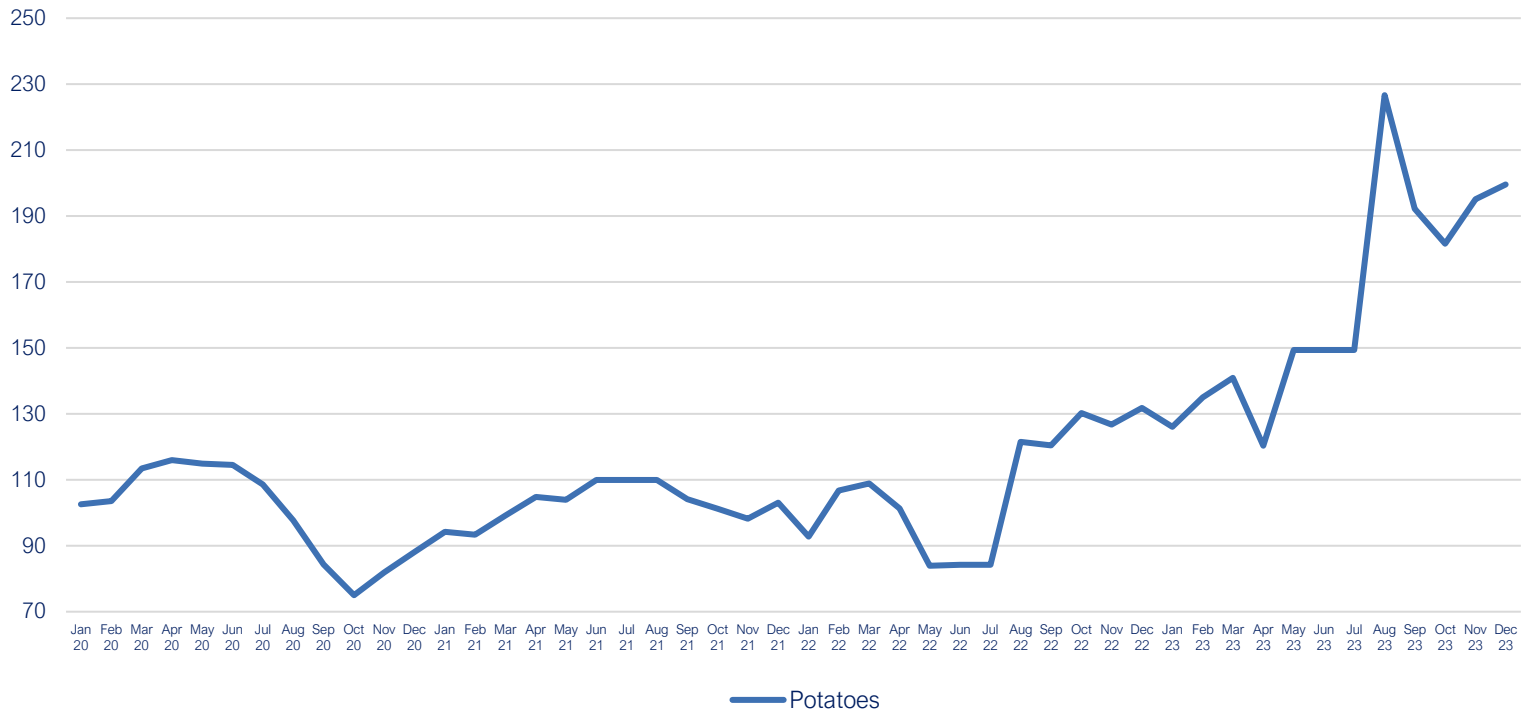
Note: This data is only available to December 2023

## Prices Dashboard

Data up to January 2024

[Back to Title Page](#)

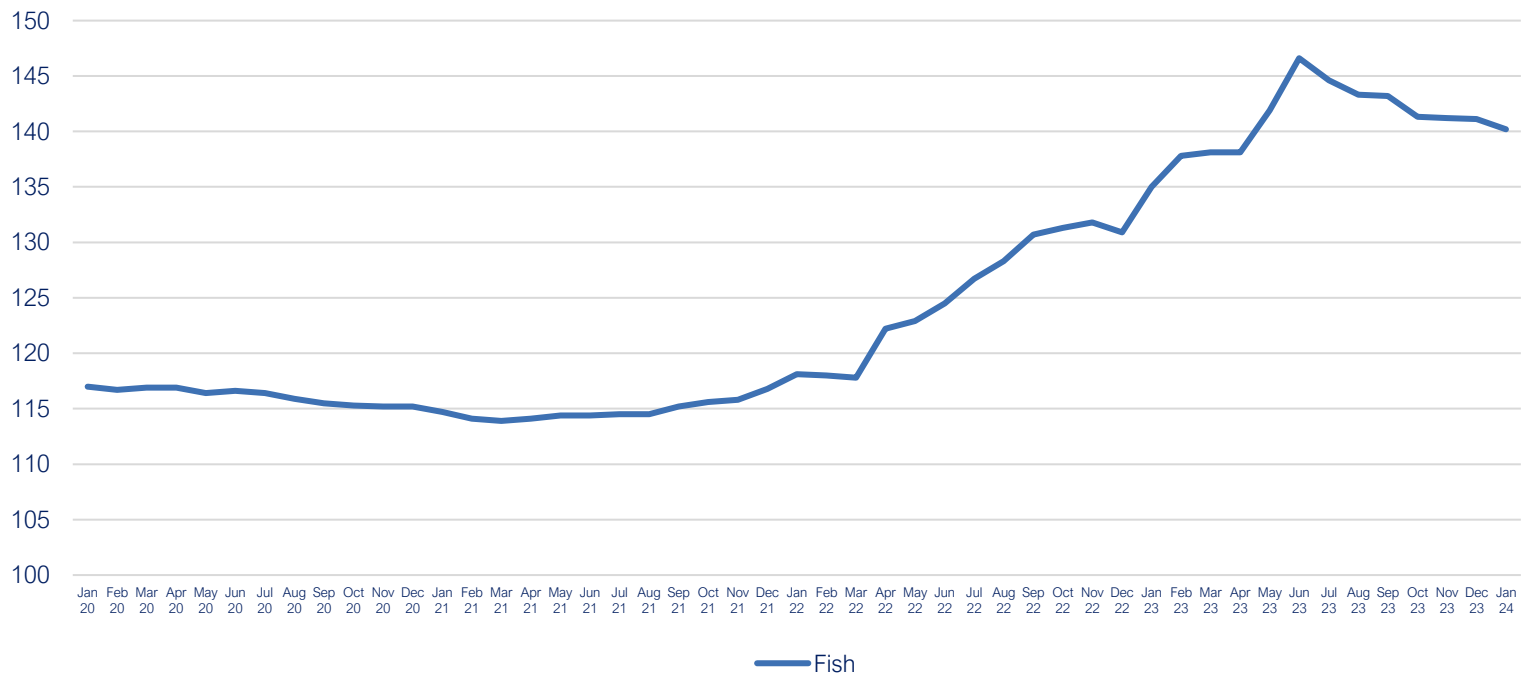
Potatoes, 2020 = 100



Source: Office for National Statistics

Note: This data is only available to December 2023

Preserved and processed fish, crustaceans and molluscs for domestic market,  
2015 = 100



Source: Office for National Statistics

---

## Sources

Agriculture and Horticulture Development Board (AHDB), UK Wholesale Prices

Department for Environment, Food & Rural Affairs, Agricultural Price Indices

Eurostat, HICP - monthly data (annual rate of change)

Freightos, Global Container Freight Index (FBX)

Office for National Statistics, Consumer Price Inflation & Producer Price Inflation

The World Bank, Commodity Markets, Monthly Prices

Trading Economics, Commodity Prices

Transport Exchange Group, Road Transport Price Index



The Food and Drink Federation (FDF) is the voice of the food and drink manufacturing industry – the UK’s largest manufacturing sector. We contribute over £30 billion to the country’s economy, supporting half a million jobs in every region and nation, and producing products that are loved in the UK and around the world. [Food and drink powers our nation.](#)

Find out more about our latest news and the work we do at:

[FDF.org.uk](https://www.fdf.org.uk)

X: [@FoodanddrinkFed](#)

[Linkedin](#)

---