

Prices Dashboard

March
2026

fdf



Prices summary

Dashboard prepared by
Uros Milosevic
FDF Senior Economic Analyst

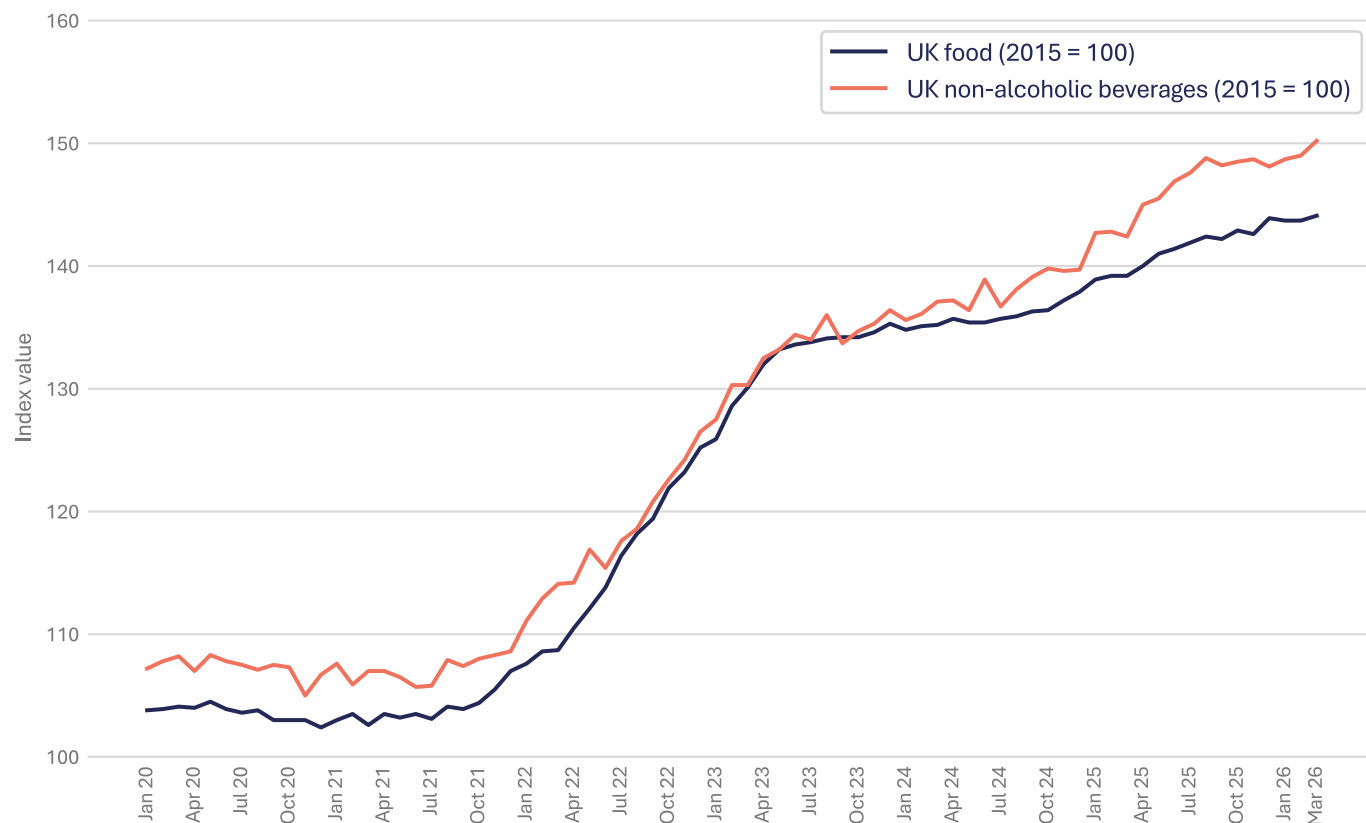


Category		Value	Monthly change	Yearly change
UK food and non-alcoholic drink inflation (CPIH)				
UK food	Index	144.1	▲ 0.3%	▲ 3.5%
UK non-alcoholic drink	Index	150.2	▲ 0.8%	▲ 5.5%
UK producer prices (PPI)				
Input prices: domestic food	Index	154.4	▼ - 0.5%	▼ - 0.3%
Input prices: imported food	Index	171.9	▼ - 0.2%	▲ 0.9%
Output prices: food for domestic market	Index	142.5	▼ - 0.3%	▲ 1.6%
Energy prices and transportation				
Crude oil, brent (\$/bbl)	Price	103.69	▲ 45.8%	▲ 42.9%
Natural gas (\$/mmbtu)	Price	17.91	▲ 59.4%	▲ 35.3%
Monthly system average price of gas (p/kWh)	Price	4.51	▲ 64.9%	▲ 29.7%
Shipping container rates	Index	1,731.4	▼ - 11.8%	▼ - 21.2%
UK haulage	Index	124.8	▲ 3.1%	▲ 4.1%
Fertiliser	Index	170.1	▼ - 0.6%	▲ 9.1%
Packaging				
Paper and paperboard	Index	131.1	— 0.0%	▼ - 0.8%
Wooden containers	Index	157.3	▼ - 0.2%	▼ - 4.6%
Aluminium (\$/mt)	Price	3,372.95	▲ 10.0%	▲ 26.9%

Category		Value	Monthly change	Yearly change
Agricultural raw materials				
Sunflower oil (\$/mt)	Price	1,465.00	▲ 1.4%	▲ 18.9%
Rapeseed oil (\$/mt)	Price	1,303.90	▲ 2.2%	▲ 9.3%
Palm oil (\$/mt)	Price	1,102.98	▲ 6.1%	▲ 3.3%
Wheat, US HRW (\$/mt)	Price	275.91	▲ 7.1%	▲ 8.0%
Maize (\$/mt)	Price	212.69	▲ 1.5%	▲ 2.5%
Rice (\$/mt)	Price	381.00	▼ - 6.8%	▼ - 10.4%
Soybeans (\$/mt)	Price	472.50	▲ 2.9%	▲ 17.8%
Feed wheat (UK)	Index	101.8	▼ - 1.1%	▼ - 10.4%
Sugar (\$/kg)	Price	0.33	▲ 7.7%	▼ - 20.6%
Cheese (£/tonne)	Price	3,080	▲ 5.5%	▼ - 23.4%
Butter (£/tonne)	Price	3,980	▲ 8.4%	▼ - 34.4%
Skimmed milk powder (£/tonne)	Price	2,340	▲ 14.7%	▲ 16.4%
Beef (UK)	Index	192.4	▼ - 1.6%	▲ 13.2%
Chicken (UK)	Index	101.2	— 0.0%	▲ 1.9%
Pork (UK)	Index	119.4	▼ - 2.9%	▼ - 6.0%
Lamb (UK)	Index	148.2	— 0.0%	▼ - 2.4%
Cocoa (\$/tonne)	Price	3,241.49	▼ - 9.6%	▼ - 59.9%
Coffee, Arabica (\$/kg)	Price	7.37	▲ 4.0%	▼ - 17.4%
Potatoes (UK)	Index	163.4	— 0.0%	▼ - 5.0%
Fish (UK)	Index	169.0	▼ - 0.4%	▲ 10.0%

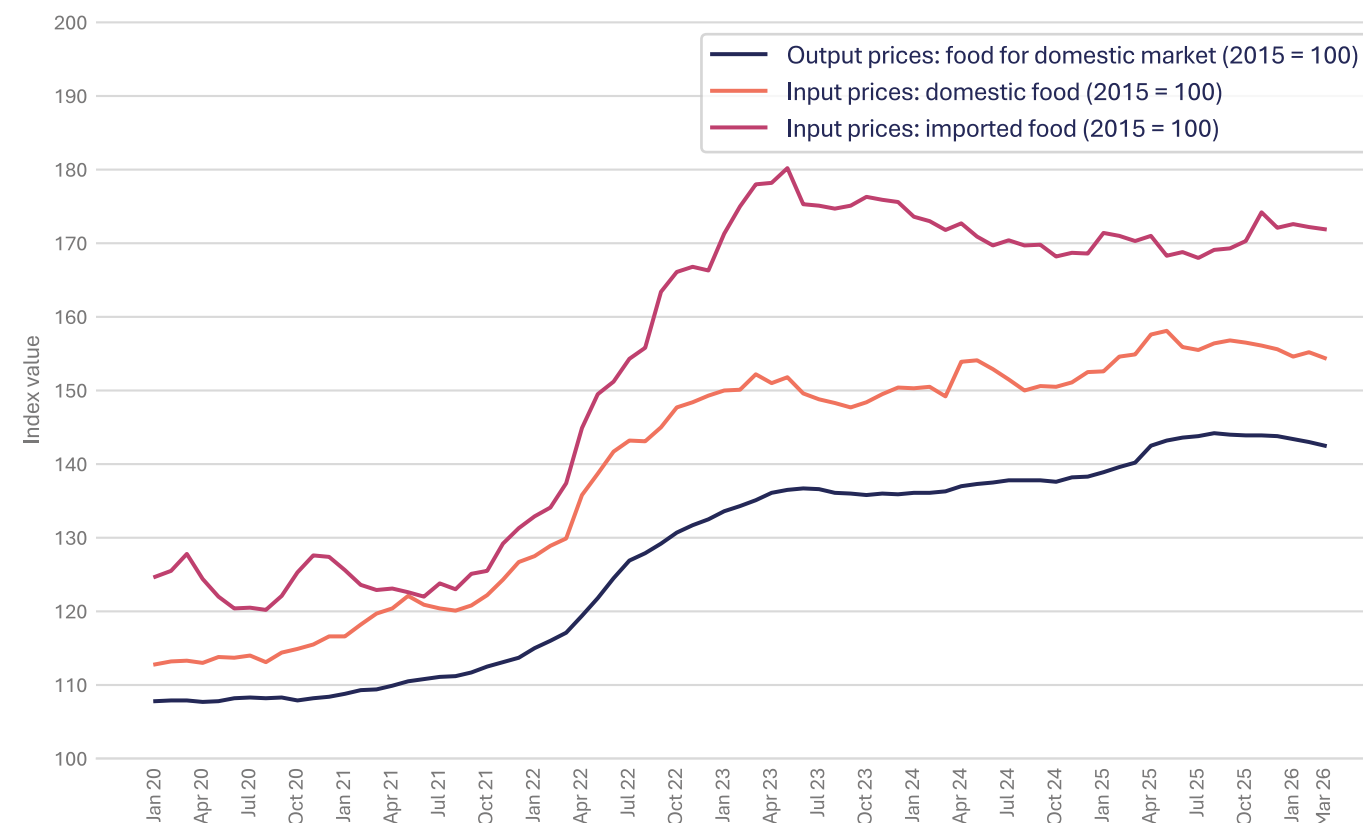
This page is interactive. Select a category to view its graph.

UK food and non-alcoholic drink inflation (CPIH)



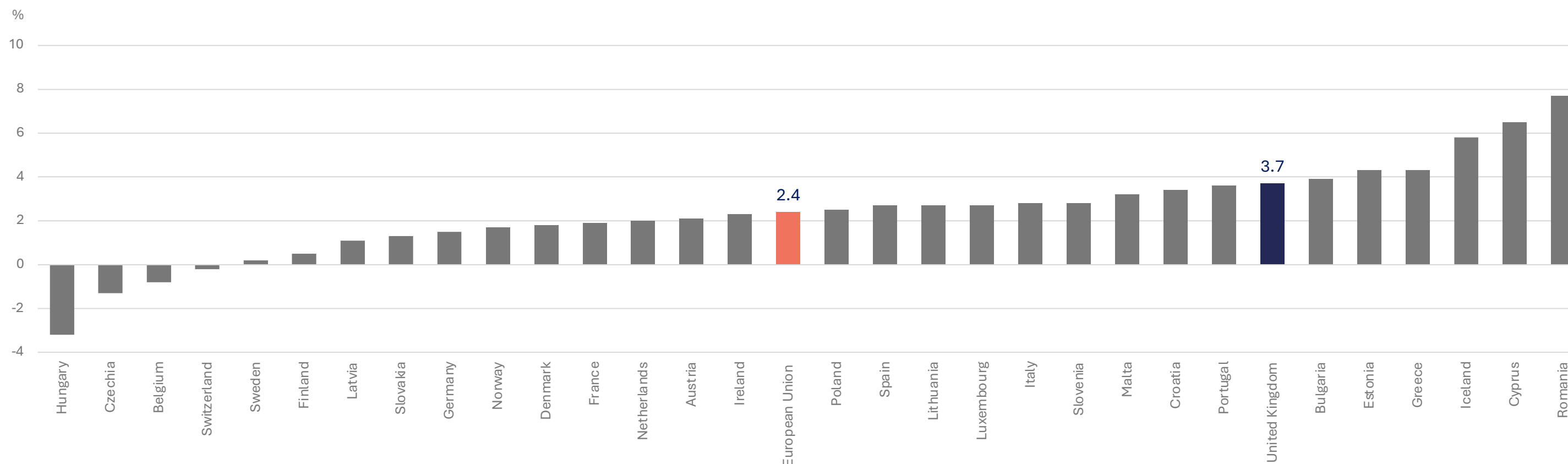
Source: Office for National Statistics

UK producer prices (PPI)



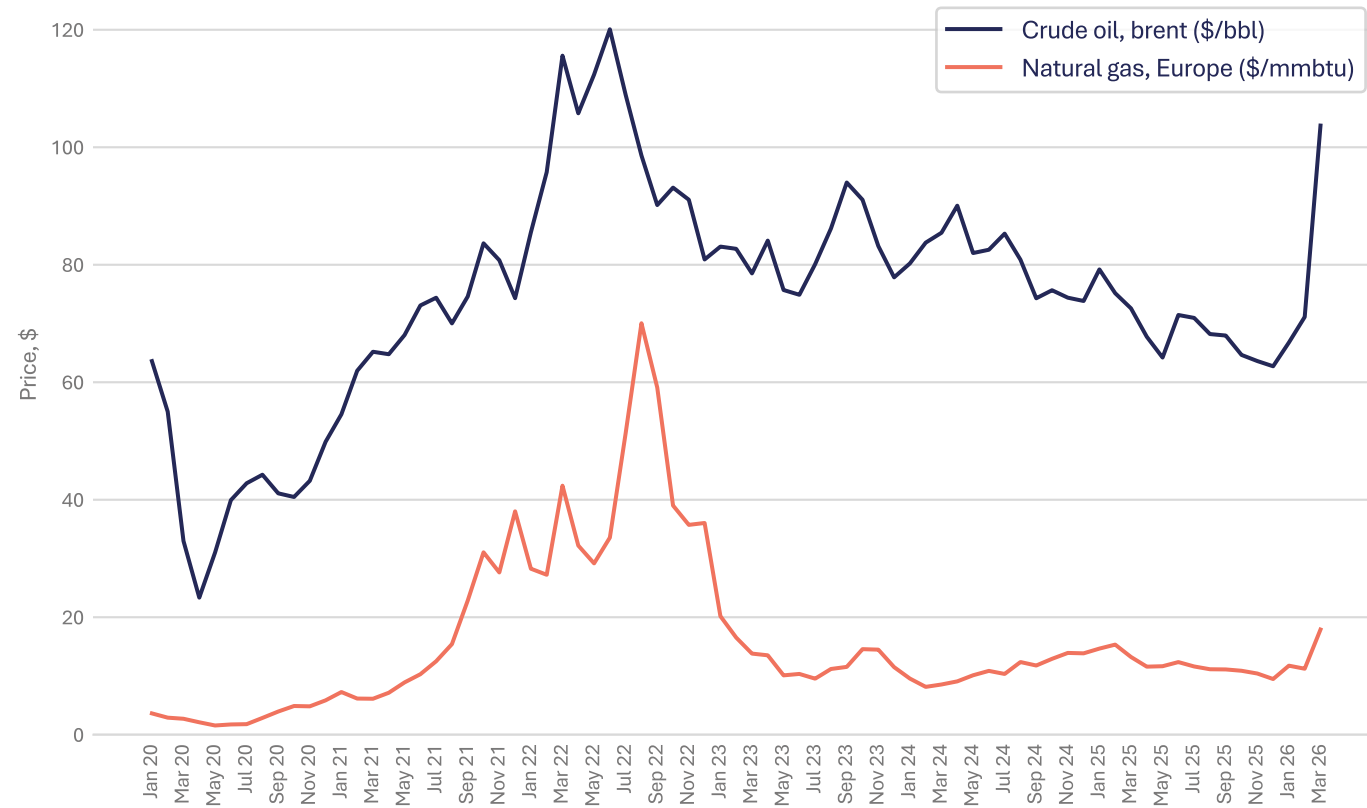
Source: Office for National Statistics

Food and non-alcoholic drink inflation comparison with Europe (annual rate of change, March 2026)



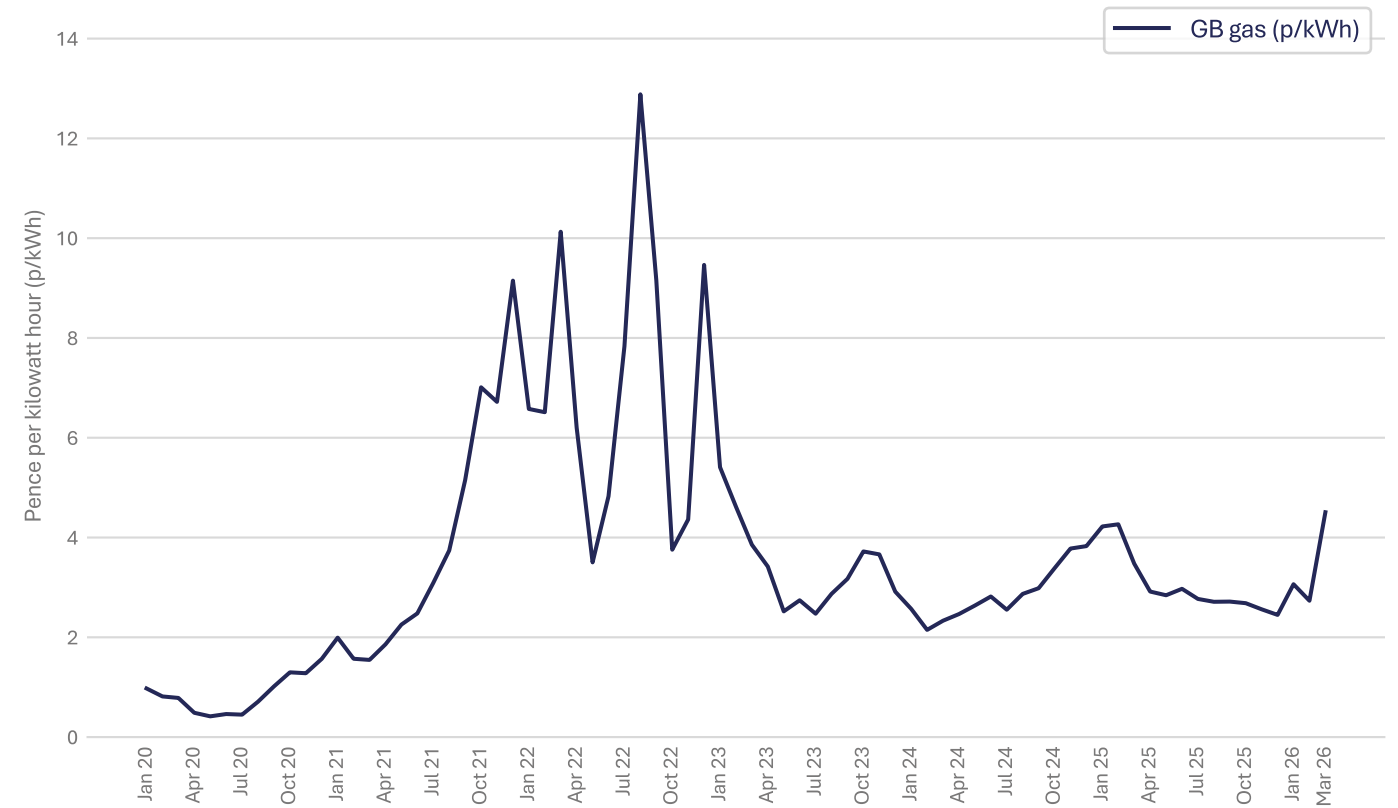
Source: Eurostat

Crude oil and natural gas



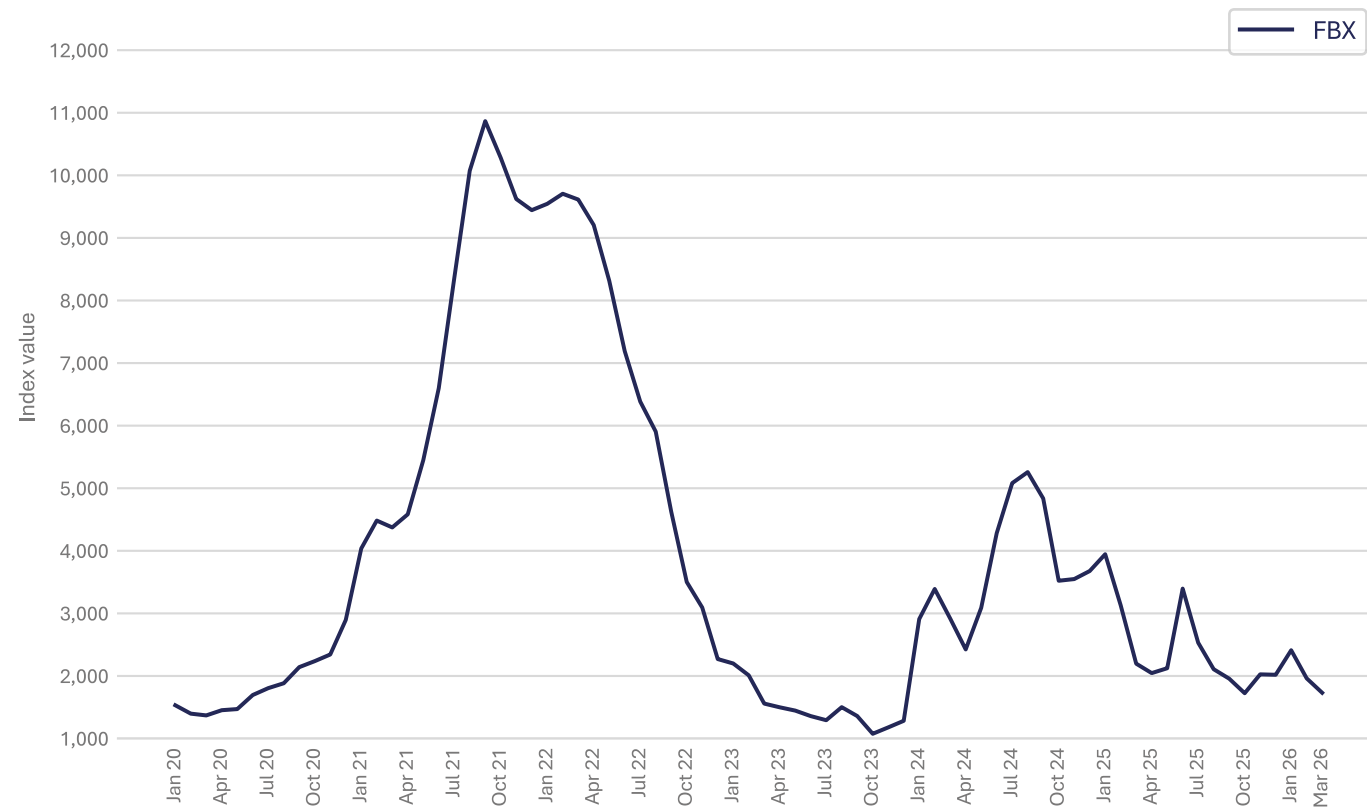
Source: World Bank Commodity Price Data

Monthly system average price (SAP) of gas



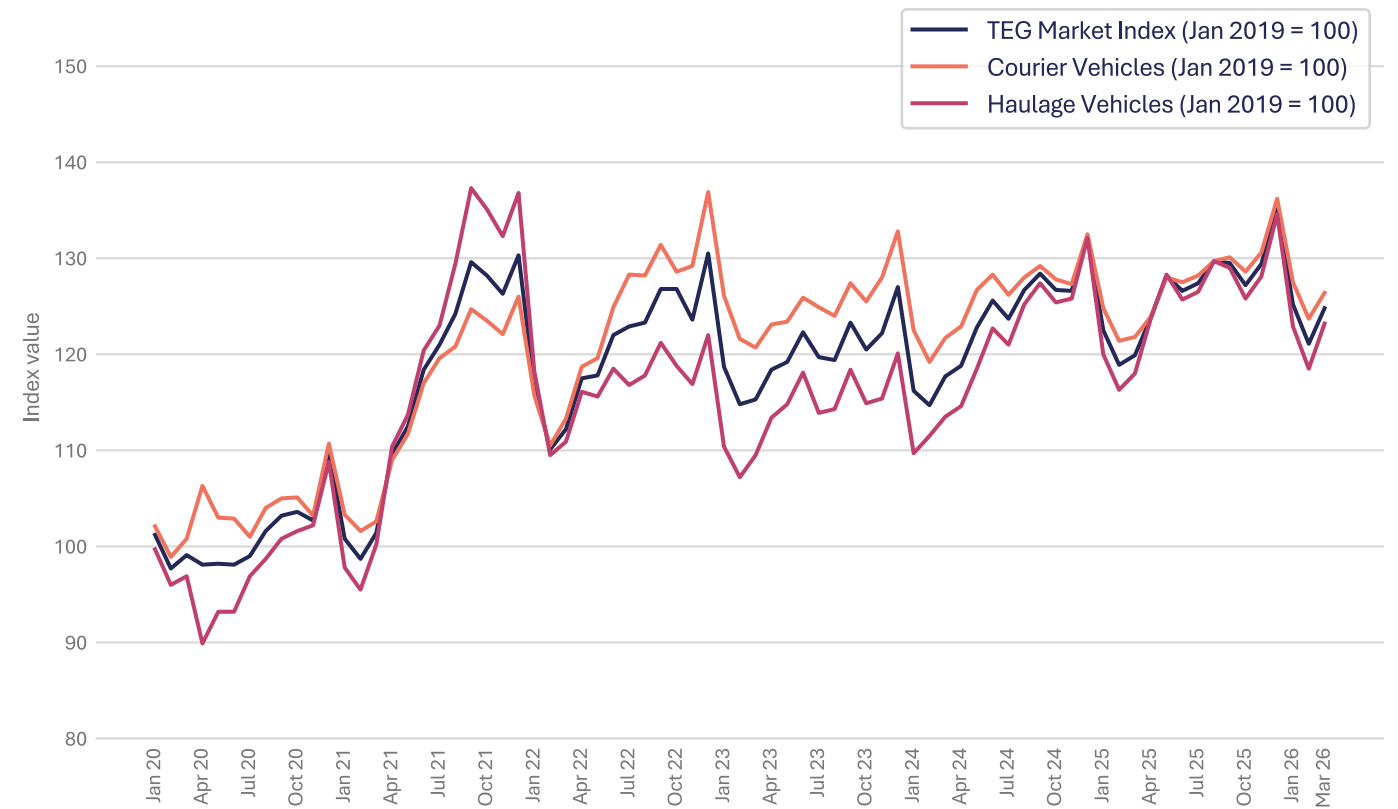
Source: Office for National Statistics

Freightos Baltic Index (FBX): Global Container Freight Index



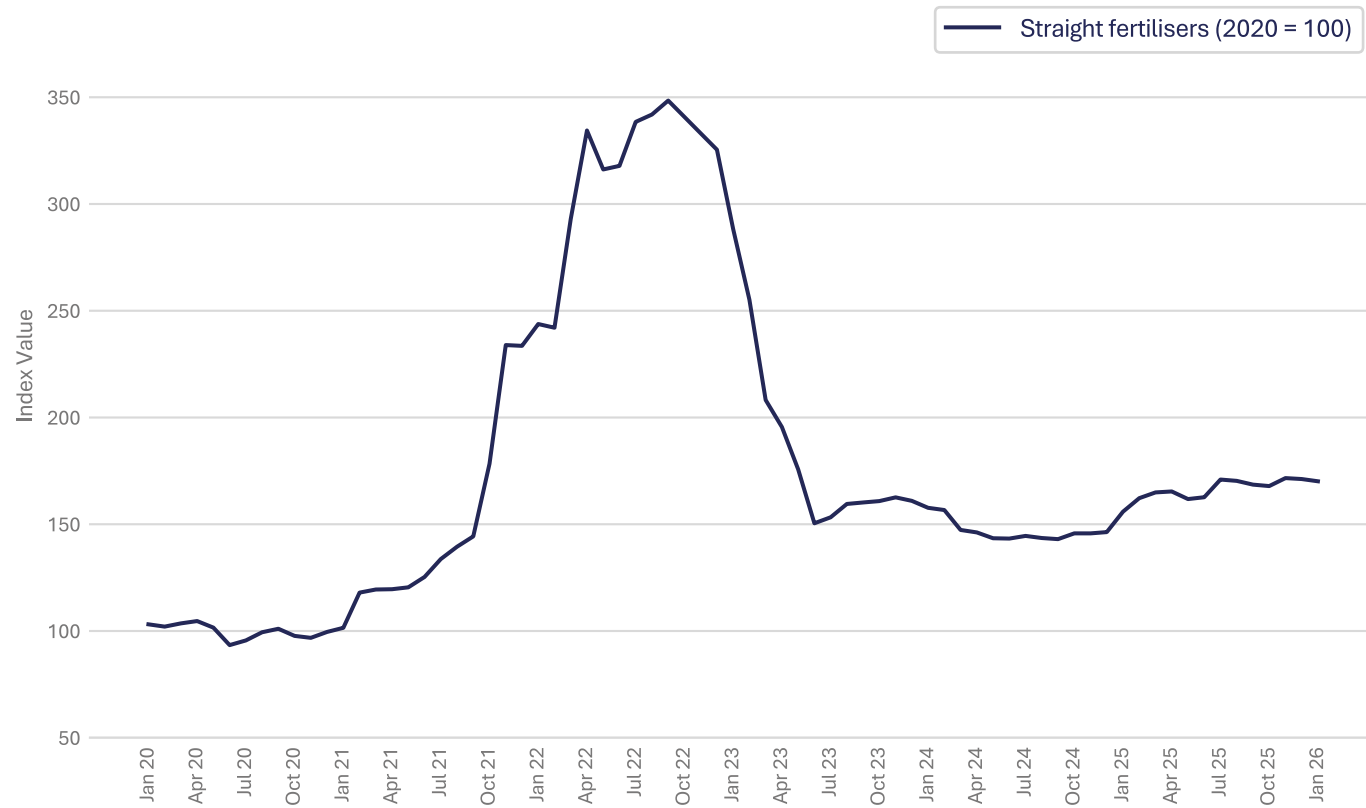
Source: Freightos, Global Container Index – note: each monthly index value is an average of the weekly index values

UK Haulage



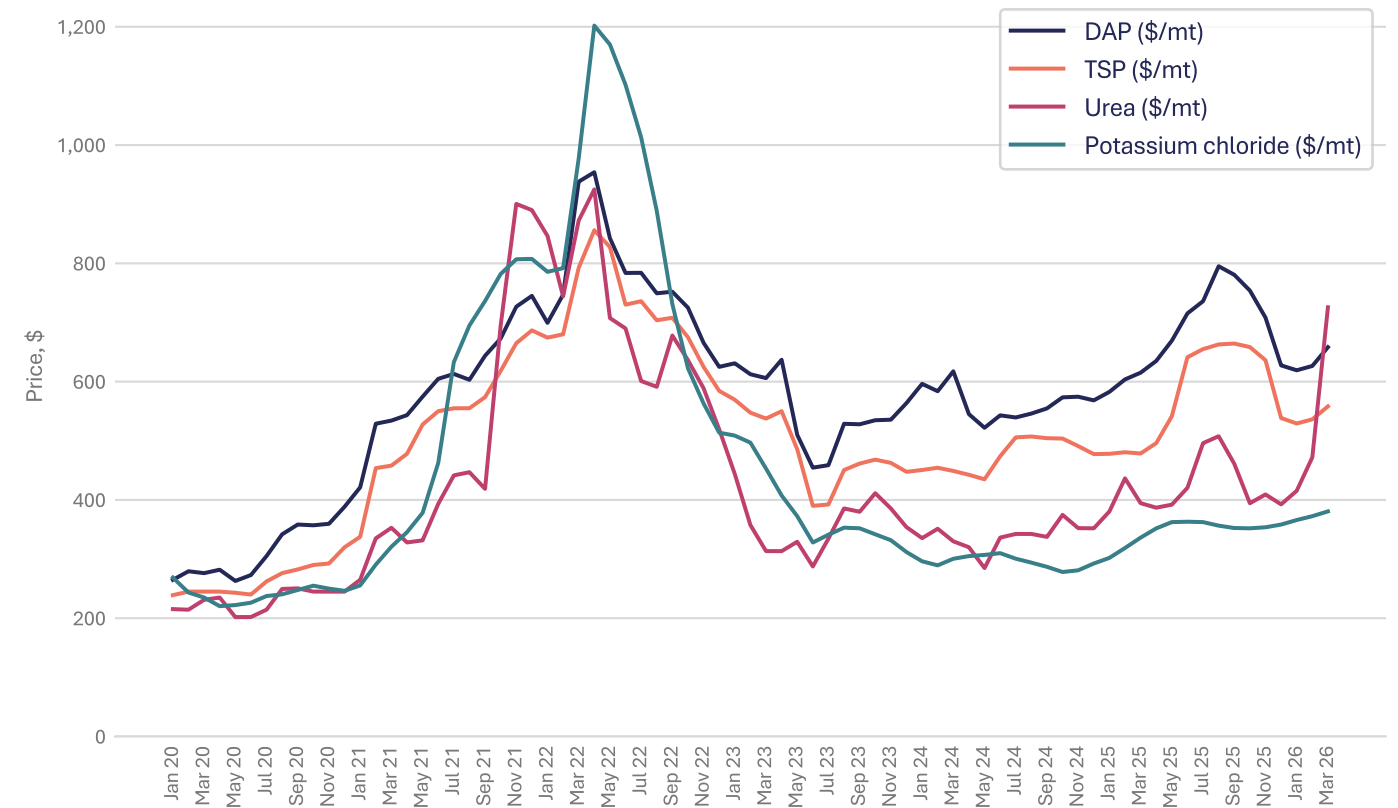
Source: Transport Exchange Group

Straight fertilisers



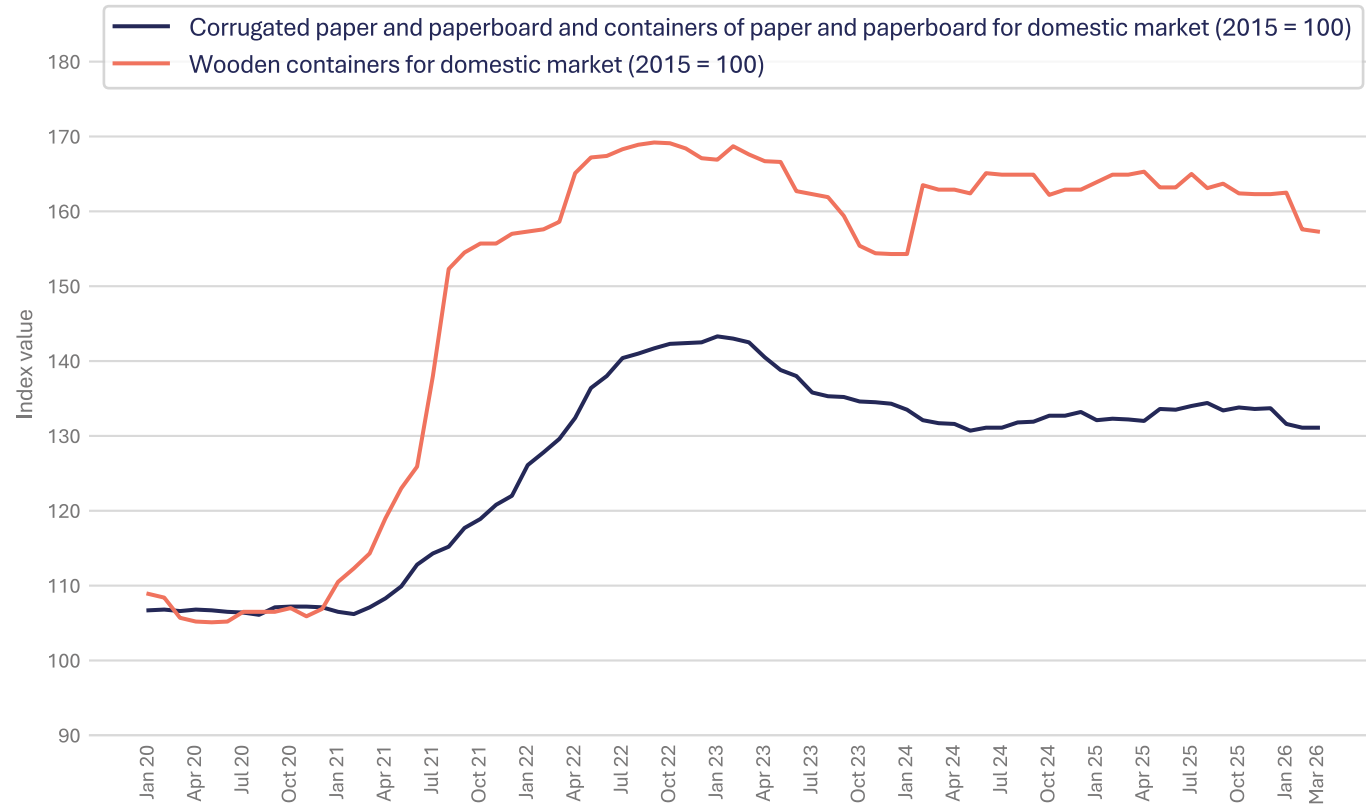
Source: Department for Environment, Food & Rural Affairs – note: this data is only available to January 2026

DAP, TSP, Urea and Potassium Chloride



Source: World Bank Commodity Price Data

Packaging



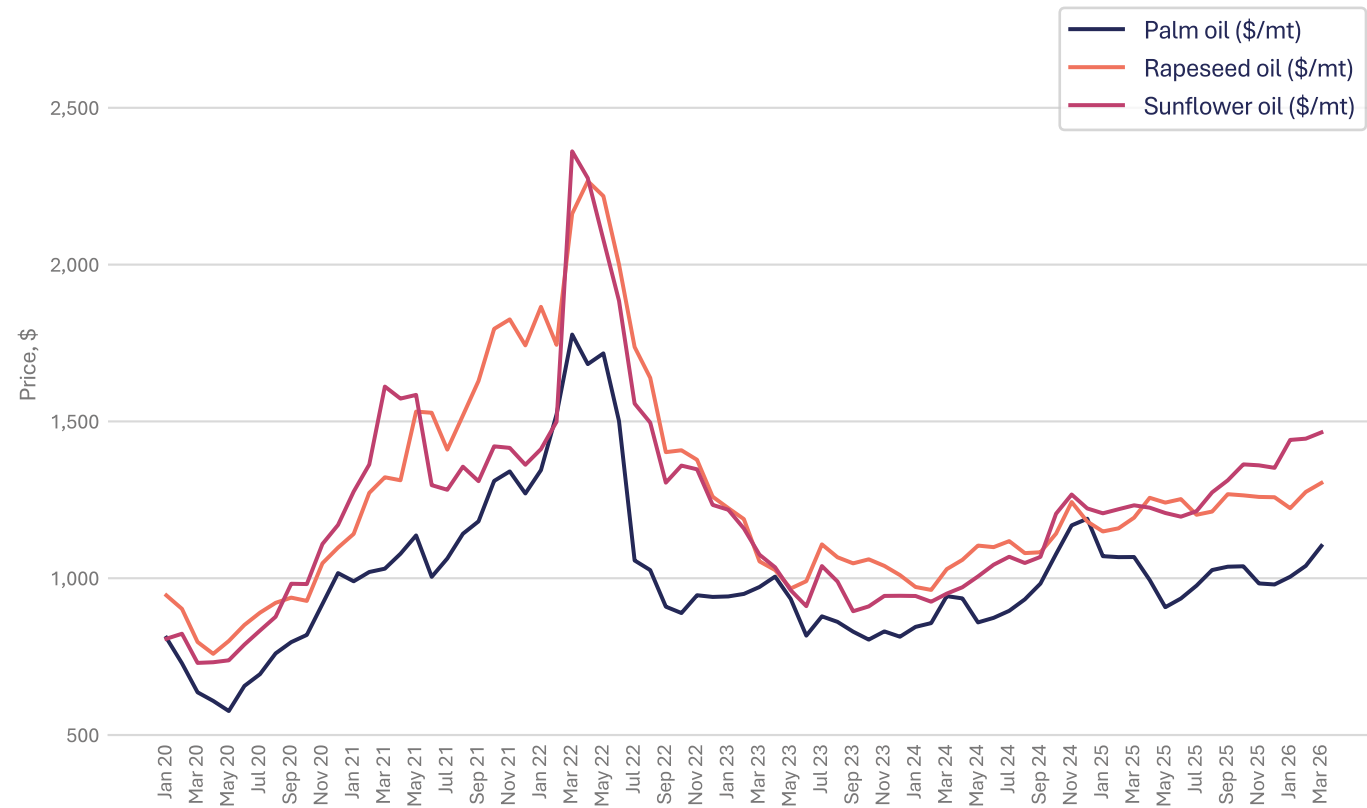
Source: Office for National Statistics

Aluminium



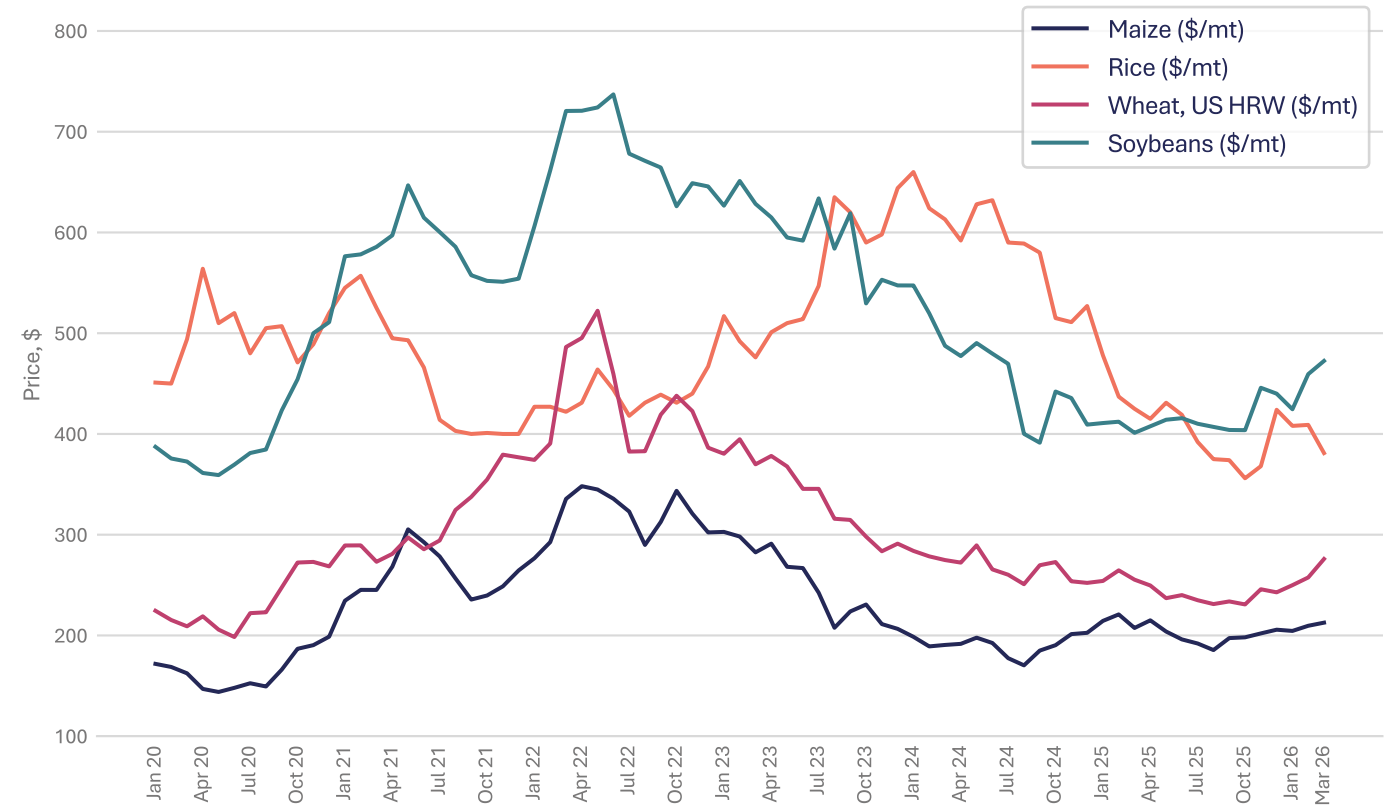
Source: World Bank Commodity Price Data

Palm oil, rapeseed oil and sunflower oil



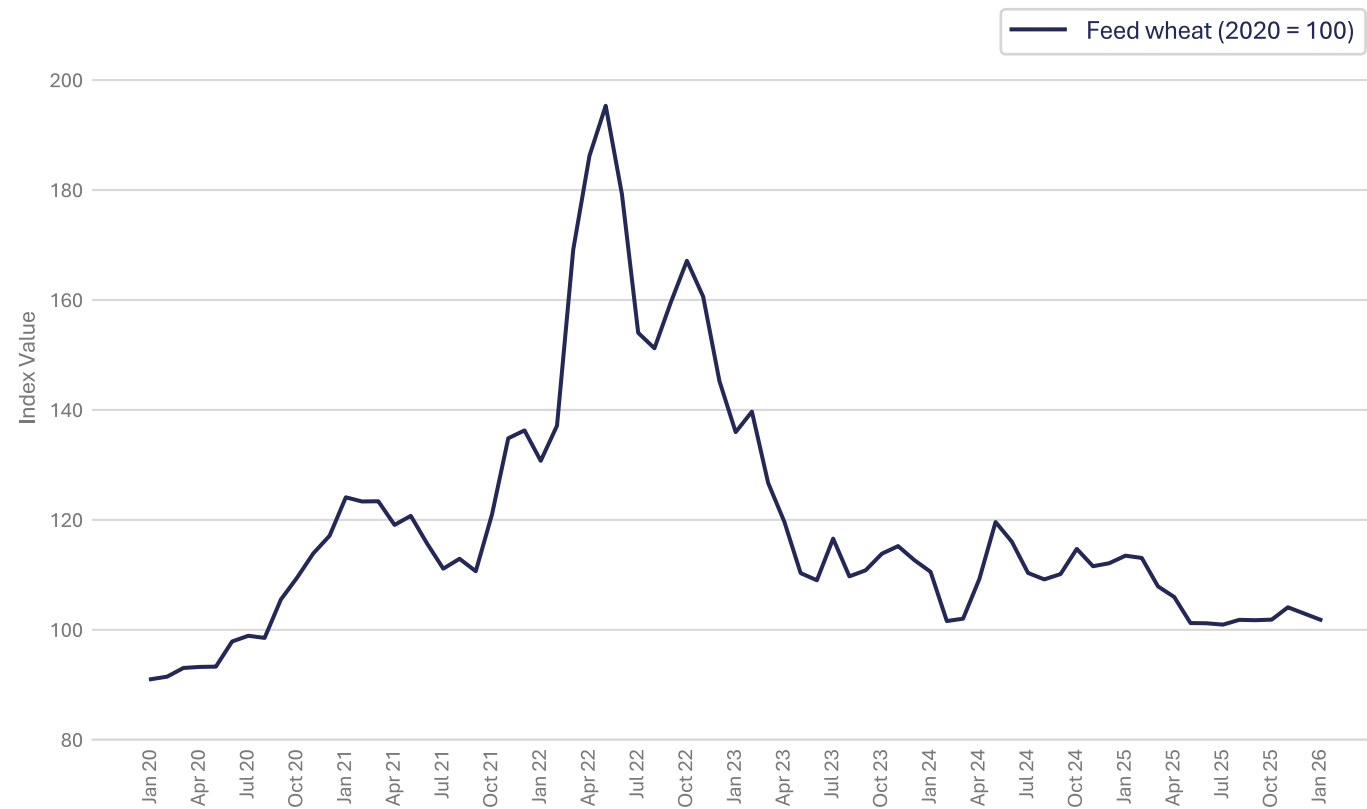
Source: World Bank Commodity Price Data

Maize, rice, wheat and soybeans



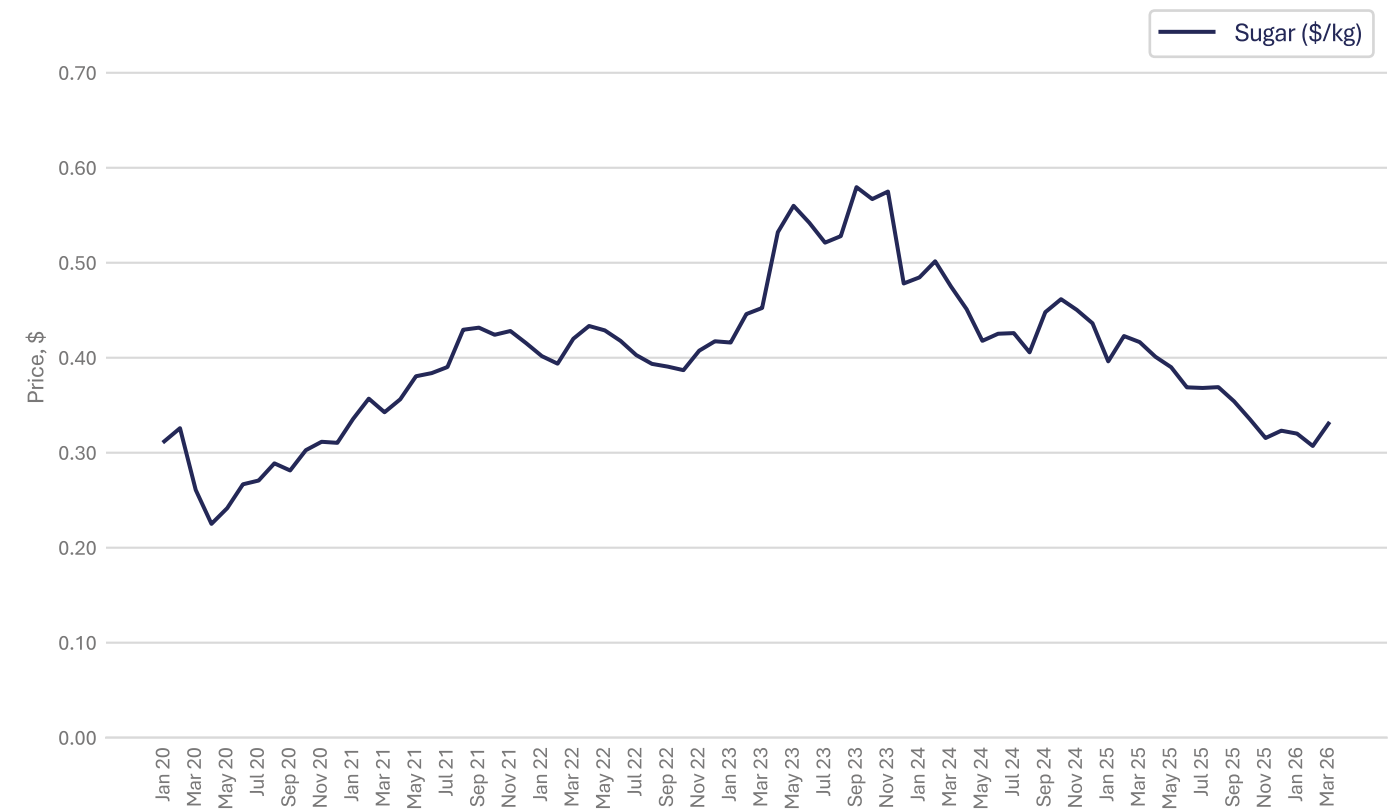
Source: World Bank Commodity Price Data

Feed wheat



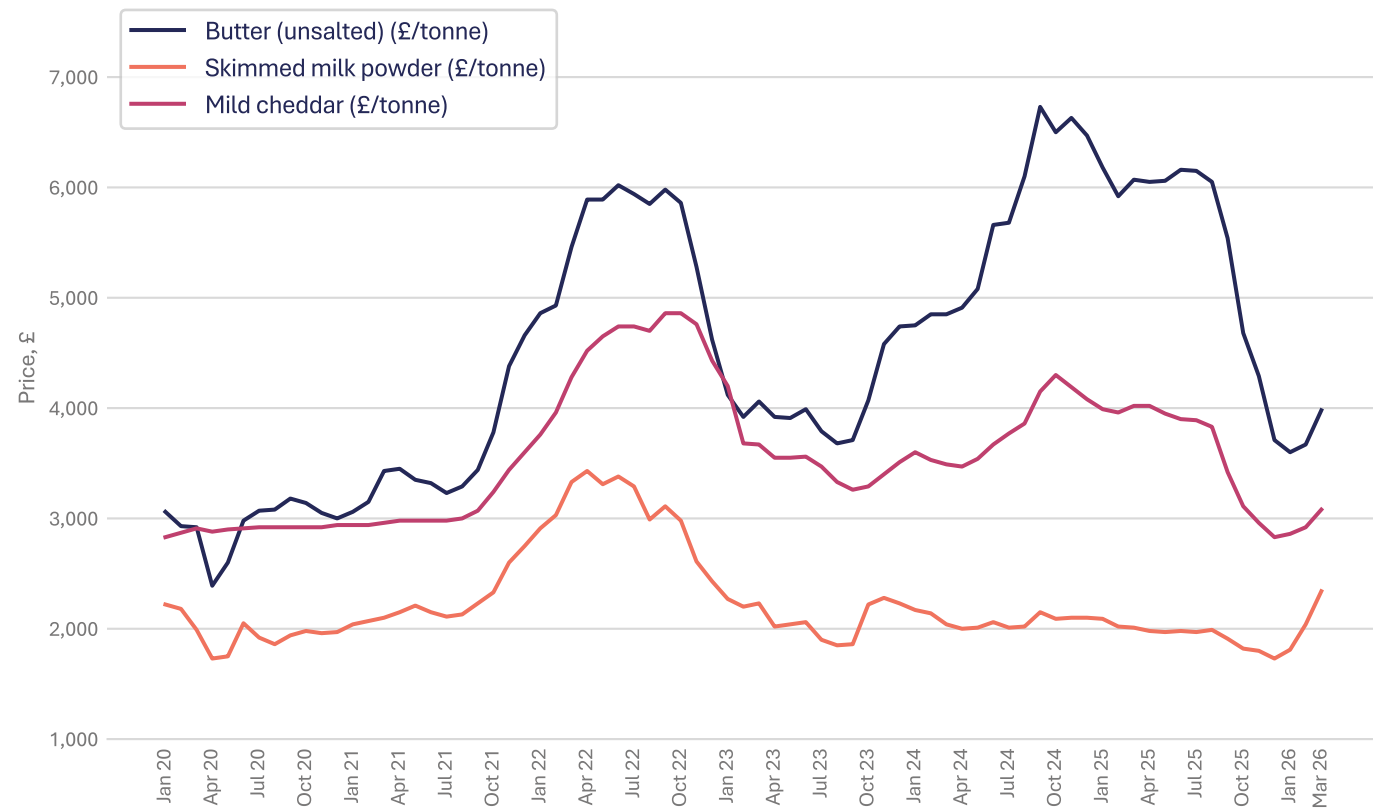
Source: Department for Environment, Food & Rural Affairs – note: this data is only available to January 2026

Sugar



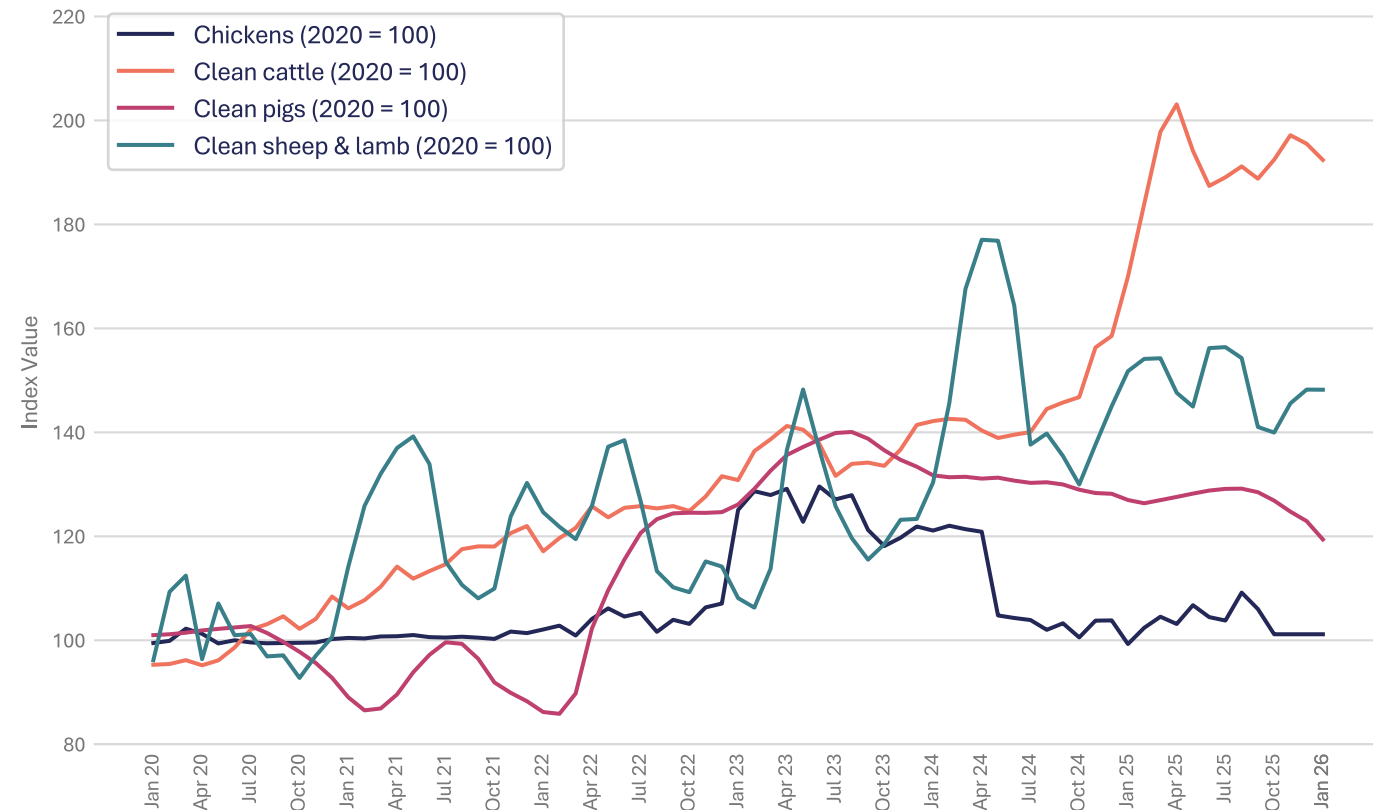
Source: World Bank Commodity Price Data

Butter, mild cheddar and skimmed milk powder



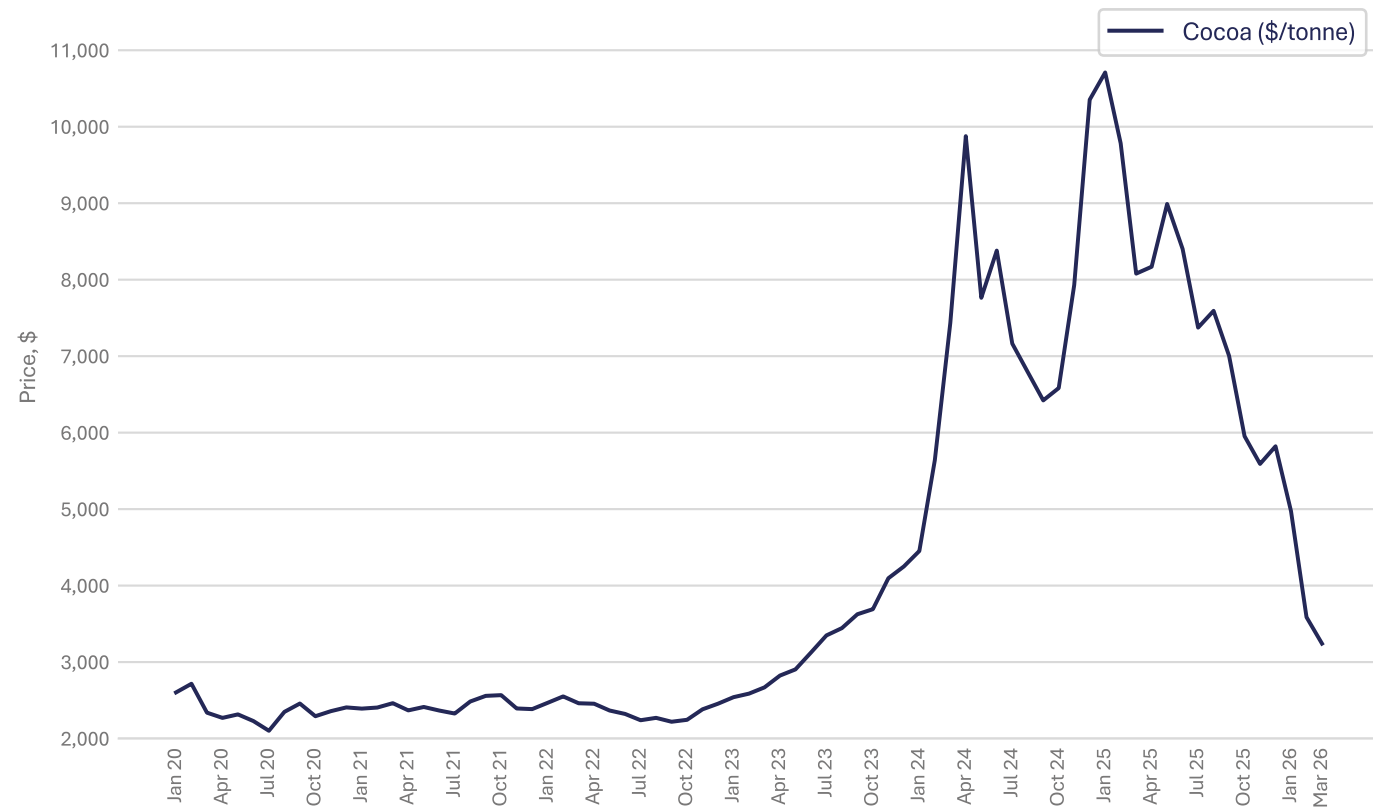
Source: Agricultural and Horticulture Development Board (AHDB)

Chicken, beef, pork and lamb



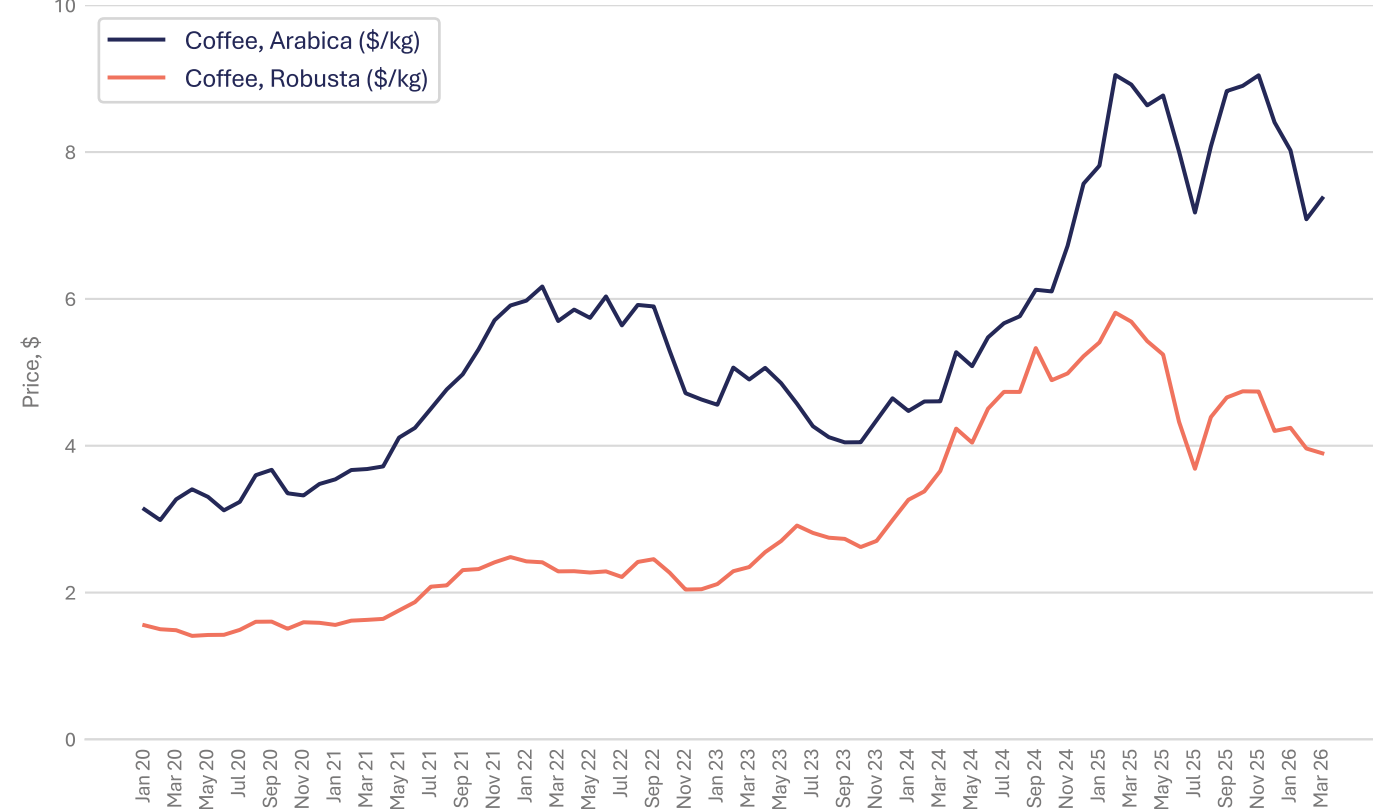
Source: Department for Environment, Food & Rural Affairs – note: this data is only available to January 2026

Cocoa



Source: International Cocoa Organization

Coffee



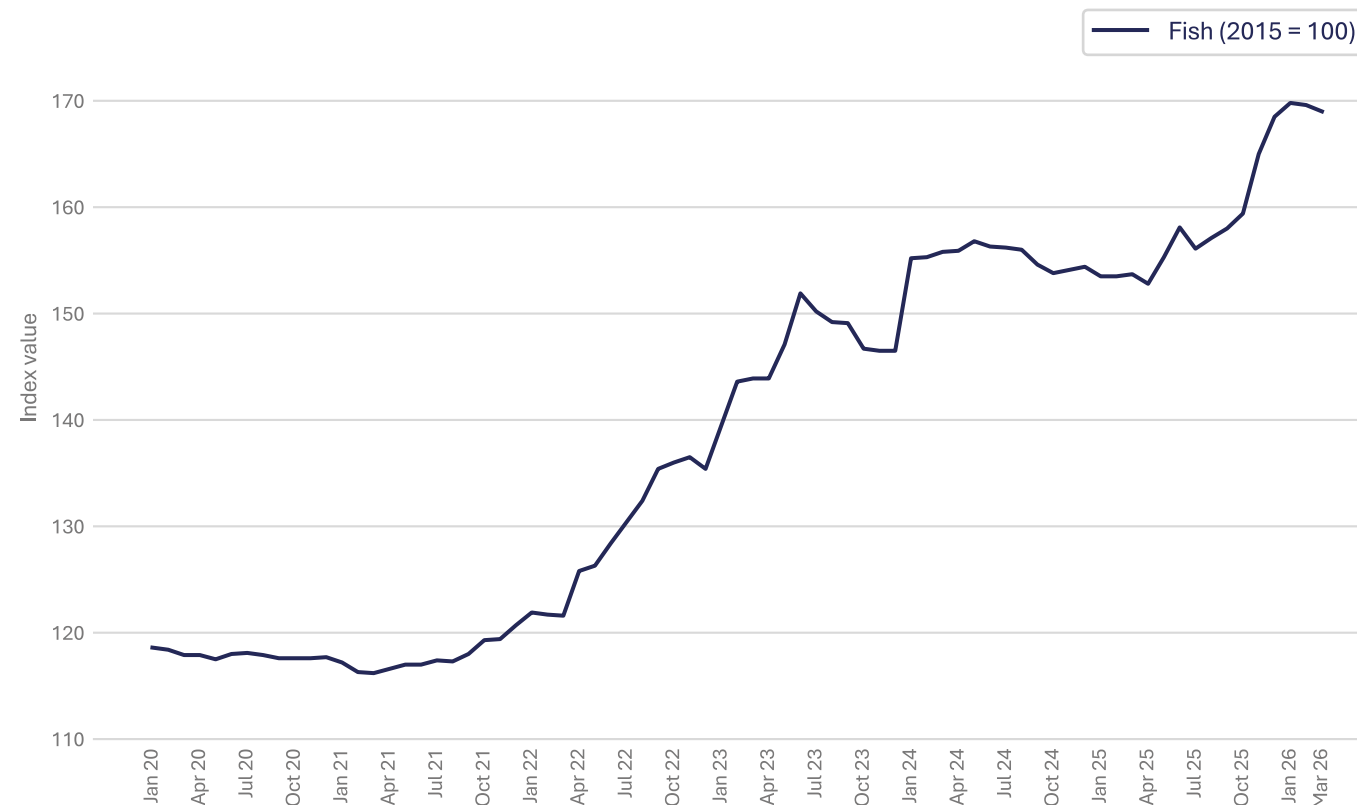
Source: World Bank Commodity Price Data

Potatoes



Source: Department for Environment, Food & Rural Affairs – note: this data is only available to January 2026

Preserved and processed fish, crustaceans and molluscs for domestic market



Source: Office for National Statistics

Data sources

Agriculture and Horticulture Development Board (AHDB), UK Wholesale Prices

International Cocoa Organization

Department for Environment, Food & Rural Affairs, Agricultural Price Indices

Office for National Statistics, Consumer Price Inflation & Producer Price Inflation

Eurostat, HICP - monthly data (annual rate of change)

The World Bank, Commodity Markets, Monthly Prices

Freightos, Global Container Freight Index (FBX)

Transport Exchange Group, Road Transport Price Index



The Food & Drink Federation (FDF) is the voice of the food and drink manufacturing industry – the UK's largest manufacturing sector.

We contribute over £38 billion to the country's economy, supporting half a million jobs in every region and nation, and producing products that are loved in the UK and beyond.

Find out more about our latest news and the work we do at:

FDF.org.uk

X @FoodanddrinkFed

LinkedIn